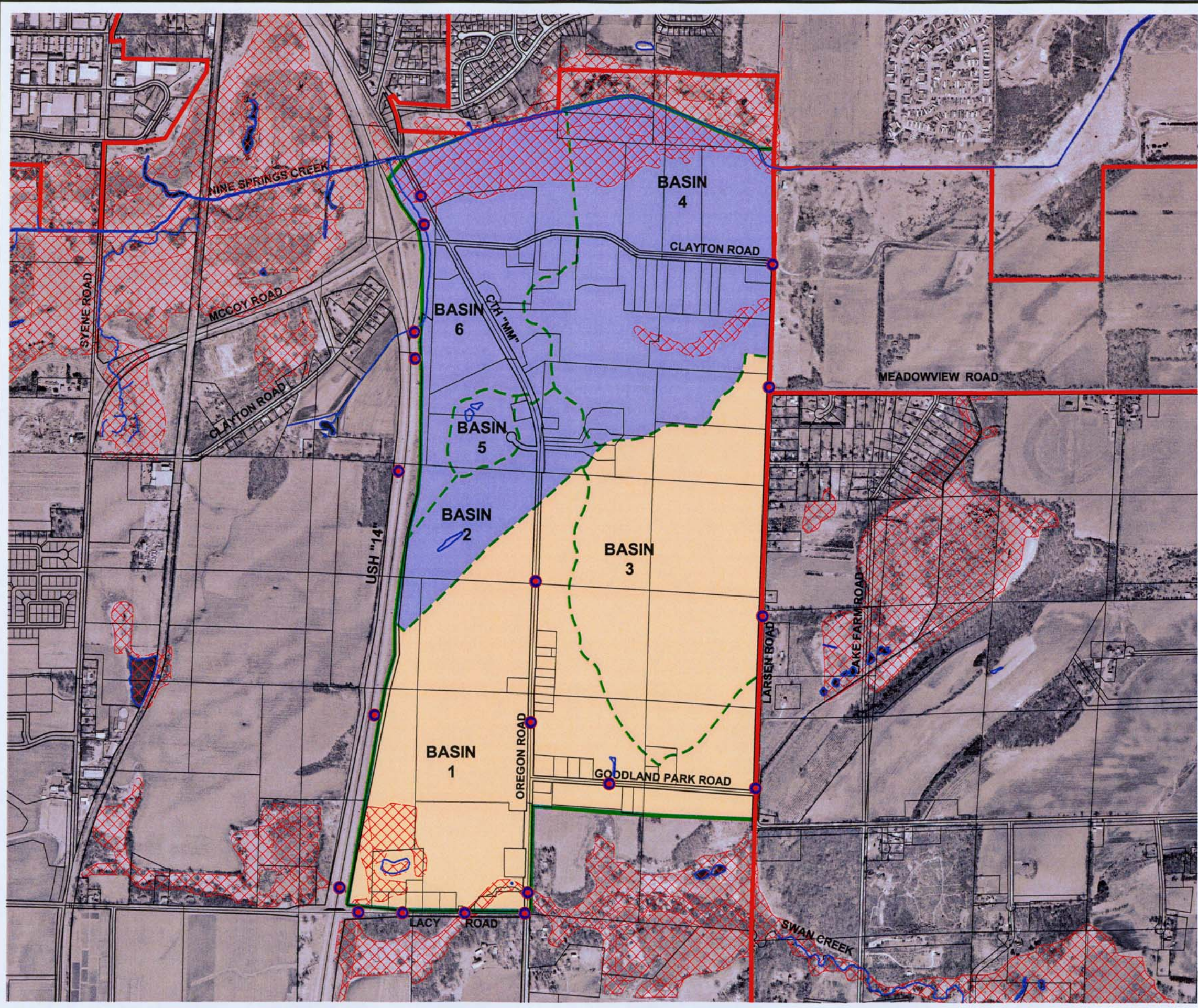
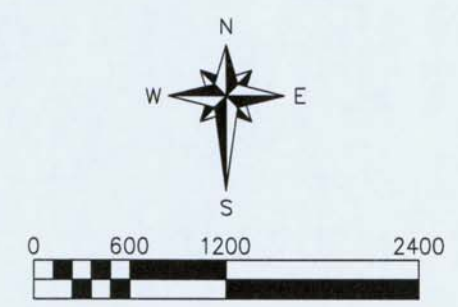


May 29, 2007 12:13pm PLOTTED BY: Proth. SAVED BY: Proth  
 G:\Land\8106002\dwg\Z-003-cesDrainageBasins-01.dwg Layout1  
 IMAGES: G:\Land\8106002\dwg\external\Done\_Co\_Vin\20060601\City\_Shape\outside\_115\north.tif  
 XREFS: G:\Land\8106002\dwg\external\Done\_Co\_Vin\20060601\City\_Shape\roster\Fitchburg.sld; G:\Land\8106002\dwg\external\Done\_Co\_Vin\20060601\City\_Shape\outside\_115\north.tif; RM11171LB



**EXHIBIT 3**  
**EXISTING DRAINAGE BASINS**  
**NORTHEAST NEIGHBORHOOD**  
**CONCEPTUAL STORM WATER PLAN**  
**CITY OF FITCHBURG**  
**DANE COUNTY, WISCONSIN**

- LEGEND**
- MUNICIPAL BOUNDARY
  - WATERWAY
  - PLAN BOUNDARY
  - BASIN DRAINAGE AREA
  - WETLANDS (WISCONSIN WETLAND INVENTORY)
  - TRIBUTARY TO SWAN CREEK SUB-WATERSHED
  - TRIBUTARY TO NINE SPRINGS CREEK SUB-WATERSHED
  - STORM SEWER OUTFALL LOCATION



DATE: APRIL 13TH, 2007  
 © 2007 Copyright Ruekert & Mielke, Inc.

SOURCE:  
 BASEMAP SOURCE: DANE COUNTY