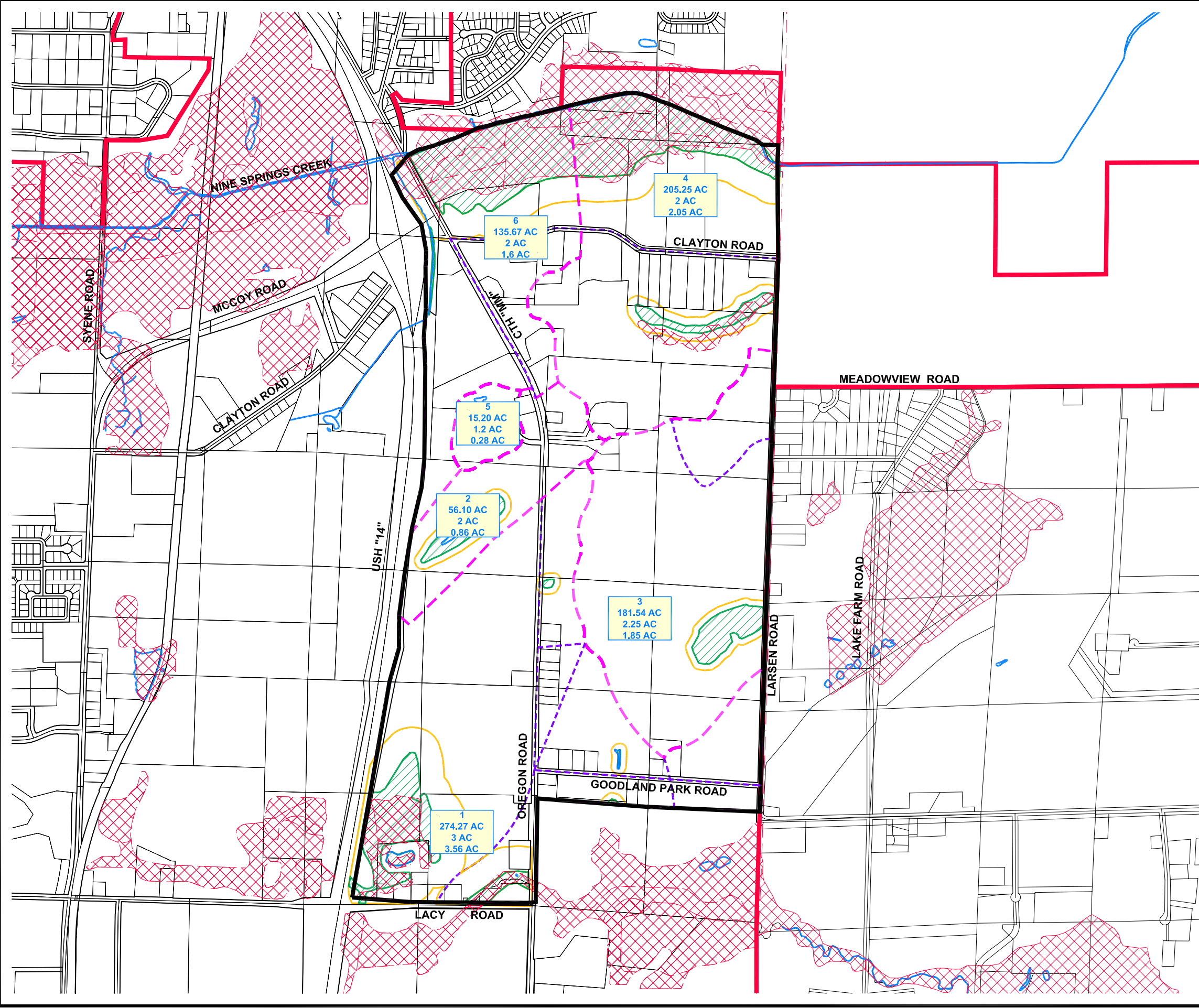


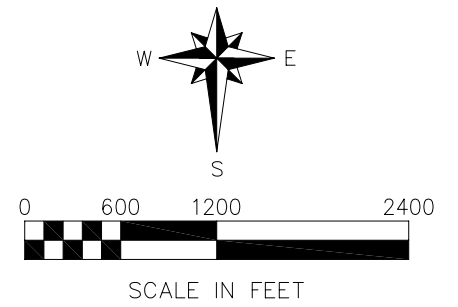
RM1117LB

Oct 31, 2007 10:24am PLOTTED BY: dklemm SAVED BY: dklemm  
G:\Land\8106002\dwg\subbasin.dwg; G:\Land\8106002\dwg\subbasin.dwg; G:\Land\8106002\dwg\subbasin.dwg; G:\Land\8106002\dwg\subbasin.dwg  
XREFS: G:\Land\8106002\dwg\subbasin.dwg; G:\Land\8106002\dwg\subbasin.dwg; G:\Land\8106002\dwg\subbasin.dwg; G:\Land\8106002\dwg\subbasin.dwg



**EXHIBIT 9**  
**CONCEPTUAL STORM WATER MANAGEMENT PLAN**  
**NORTHEAST NEIGHBORHOOD**  
**CONCEPTUAL STORM WATER PLAN**  
 CITY OF FITCHBURG  
 DANE COUNTY, WISCONSIN

- LEGEND**
- MUNICIPAL BOUNDARY
  - PLAN BOUNDARY
  - - - BASIN DRAINAGE AREA
  - - - SUBBASIN DRAINAGE AREA
  - WATERWAY
  - ▨ REFINED WETLAND BOUNDARY
  - ▨ WETLANDS (WISCONSIN WETLAND INVENTORY)
  - RECOMMENDED WETLAND BUFFERS
- BASIN ID
- |   |          |      |         |
|---|----------|------|---------|
| 2 | 56.10 AC | 2 AC | 0.86 AC |
|---|----------|------|---------|
- BASIN ACREAGE  
 WATER QUALITY & WATER QUANTITY PERMANENT POOL ACREAGE  
 INFILTRATION ACREAGE



DATE: MAY, 2007  
 REV DATE: OCT, 2007  
 © 2007 Copyright Ruckert & Mielke, Inc.

SOURCE:  
 BASEMAP SOURCE: DANE COUNTY