

Project Schedule Capital Region Sustainable Communities Initiative

2011												2012												2013												2014	
Mar	Apr	May	Jun	Jul	Aug	Sep	Oct	Nov	Dec	Jan	Feb	Mar	Apr	May	Jun	Jul	Aug	Sep	Oct	Nov	Dec	Jan	Feb	Mar	Apr	May	Jun	Jul	Aug	Sep	Oct	Nov	Dec	Jan	Feb		
Quarter 1			Quarter 2			Quarter 3			Quarter 4			Quarter 5			Quarter 6			Quarter 7			Quarter 8			Quarter 9			Quarter 10			Quarter 11			Quarter 12				
Phase 1: Learning and capacity building to gain knowledge for informed decision-making and increase abilities to carry out collaborative planning (Months 1-18)																																					
												Phase 2: Establish shared sustainability goals and measurable outcomes, and identify potential implementation measures (Months 12-30)																									
																								Phase 3: Implementation of goals and outcomes through recommended amendments or updates to public and private plans, policies, and investments (Months 18-36 and ongoing)													

2011												2012												2013												2014	
Mar	Apr	May	Jun	Jul	Aug	Sep	Oct	Nov	Dec	Jan	Feb	Mar	Apr	May	Jun	Jul	Aug	Sep	Oct	Nov	Dec	Jan	Feb	Mar	Apr	May	Jun	Jul	Aug	Sep	Oct	Nov	Dec	Jan	Feb		
Quarter 1			Quarter 2			Quarter 3			Quarter 4			Quarter 5			Quarter 6			Quarter 7			Quarter 8			Quarter 9			Quarter 10			Quarter 11			Quarter 12				

2011												2012												2013												2014	
Mar	Apr	May	Jun	Jul	Aug	Sep	Oct	Nov	Dec	Jan	Feb	Mar	Apr	May	Jun	Jul	Aug	Sep	Oct	Nov	Dec	Jan	Feb	Mar	Apr	May	Jun	Jul	Aug	Sep	Oct	Nov	Dec	Jan	Feb		
Quarter 1			Quarter 2			Quarter 3			Quarter 4			Quarter 5			Quarter 6			Quarter 7			Quarter 8			Quarter 9			Quarter 10			Quarter 11			Quarter 12				
A. Develop Partnerships																																					
Partnership Meetings																																					
Execute MOU																																					
Conferences																																					
Education & Outreach	Website / Email List / Presentations / Media Relations																																				

B. Transit / TOD Planning																		
Market Studies	Scope / RFQ / RFP / Contract / Initial Results / Feedback / Final Results																	
Infill Inventory	Inventory / Promotion																	
Transit Studies	Scope / RFQ / RFP / Contract / Consultants / Initial Findings / Feedback / Final Report																	
TOD Planning													I.D. Areas / Neighborhood Outreach / RFP / Neighborhood Feedback / Final					

C. FUDA Planning																		
Market Studies	Scope / RFQ / RFP / Contract / Initial Results / Feedback / Final Results																	
Infill Inventory	Inventory / Promotion																	
Areas 1-3	Public Participation Plan / Existing Conditions Assessment / Scenario Planning / FUDA Plans / Adoption																	
Areas 2-6	Recruitment / Area Selection / Public Participation Plan / Existing Conditions Assessment / Scenario Planning / FUDA Plans / Adoption																	
Areas 3-9													Recruitment / Area Selection / Public Participation Plan / Existing Conditions Assessment / Scenario Planning / FUDA Plans / Adoption					

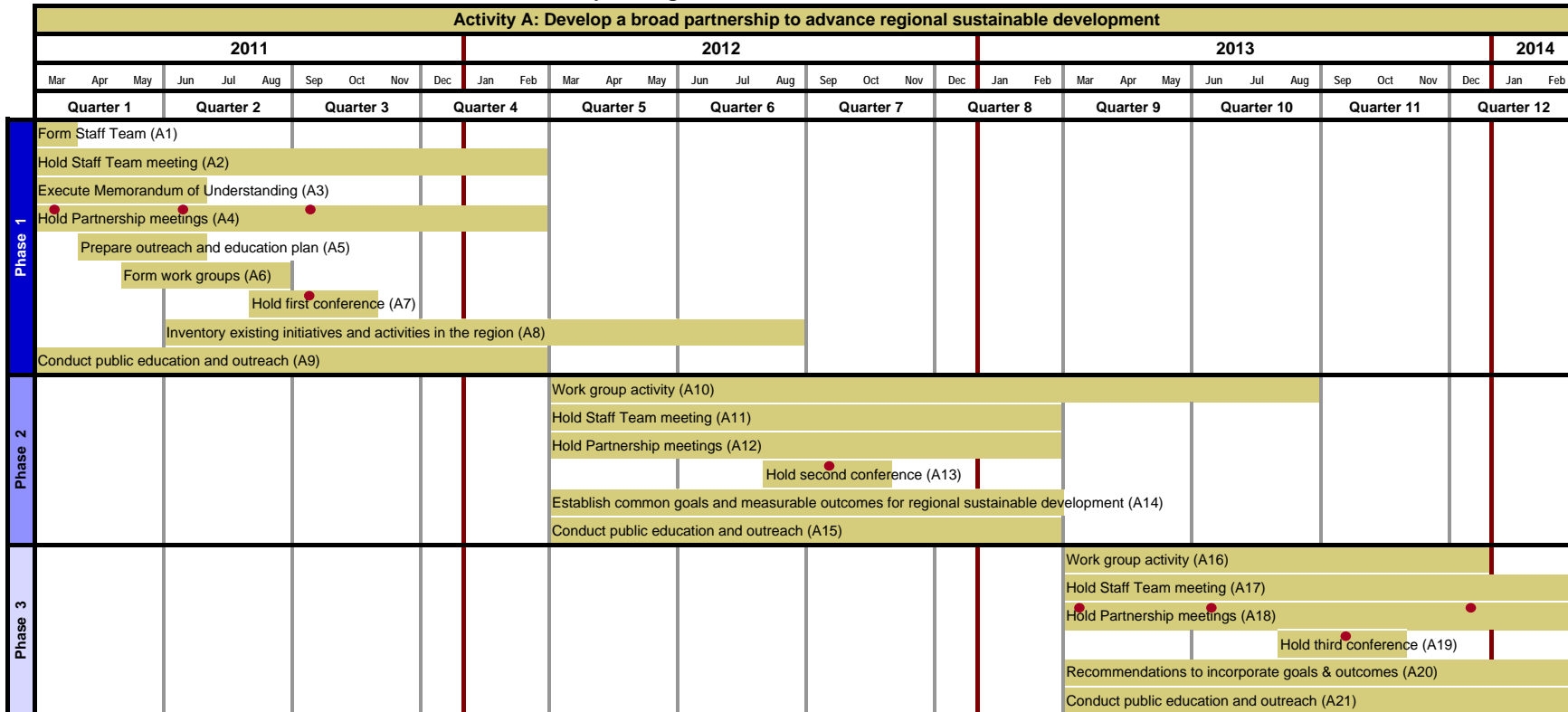
D. Close Sustainability Gaps with Local & Regional Plans																		
Form Workgroups																		
Workgroup Activities	Inventory Existing Activities / Recommendations for Goals & Outcomes / Recommendations for Implementation of Goals & Outcomes																	

E. Catalytic Projects																		
Vegetable Packing House	Advisory Committee / Growers & Buyers Survey / Site Identification / Packing House Model / Feasibility & Business Plan																	
100% Stormwater Capture	Analysis / Workshop / Strategies / Adoption																	
Madison Sustainability Center	Description / Public Benefits / Business Plan / Architect - Engineering plan / Developer Recruitment / Predevelopment																	
Fresh Food Market	Advisory Committee / Survey Results / Site Design / Business Plan																	

F. Sustainability Indicators																															
Indicator Development	Draft Indicators / Data Collection & Reporting Methods / Final Report																														
Indicator Training																															

● Event Date

**Project Schedule
Capital Region Sustainable Communities Initiative**



Phase 1: Learning and capacity building to gain knowledge for informed decision-making, increase abilities to evaluate information, and conduct planning

Phase 2: Establish shared sustainability goals and measurable outcomes, and identify possible implementation measures

Phase 3: Implementation of goals and outcomes through recommended amendments or updates to plans, policies, and investments

● Meeting Date

**Project Schedule
Capital Region Sustainable Communities Initiative**

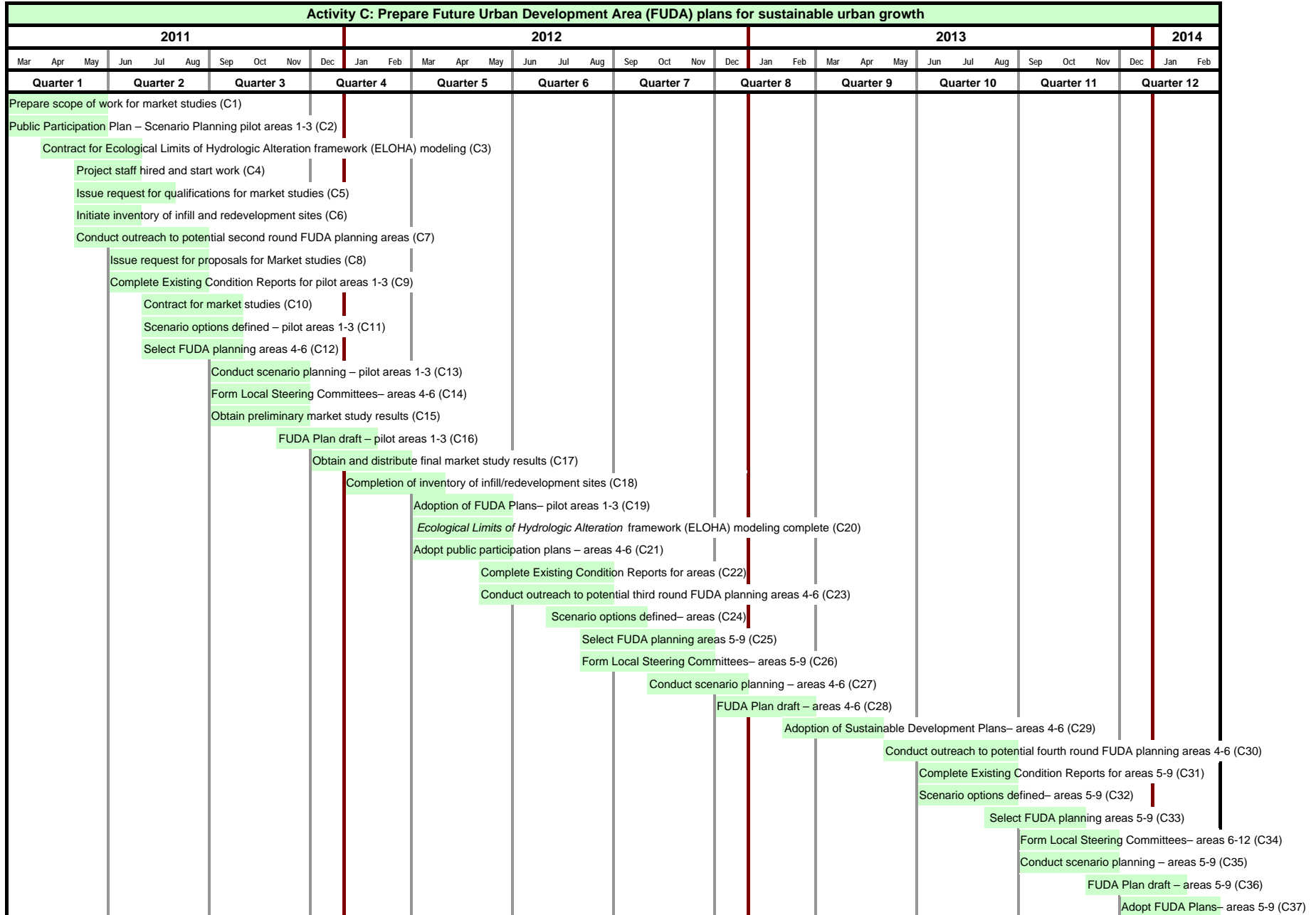
Activity B: Prepare plans for enhanced transit and transit-oriented development																																			
2011												2012												2013				2014							
Mar	Apr	May	Jun	Jul	Aug	Sep	Oct	Nov	Dec	Jan	Feb	Mar	Apr	May	Jun	Jul	Aug	Sep	Oct	Nov	Dec	Jan	Feb	Mar	Apr	May	Jun	Jul	Aug	Sep	Oct	Nov	Dec	Jan	Feb
Quarter 1			Quarter 2			Quarter 3			Quarter 4			Quarter 5			Quarter 6			Quarter 7			Quarter 8			Quarter 9			Quarter 10			Quarter 11			Quarter 12		
Phase 1	Prepare scope of work for market studies (B1)																																		
	Initiate inventory of infill and redevelopment sites (B2)																																		
	Issue request for qualifications for market studies (B3)																																		
	Issue request for proposals for Market studies (B4)																																		
	Prepare scope of work for transit/TOD studies (B5)																																		
	Contract for market studies (B6)																																		
	Issue request for qualifications for Transit/TOD studies (B7)																																		
	Obtain preliminary market study results (B8)																																		
	Issue request for proposals for Transit/TOD studies (B9)																																		
	Obtain and distribute final market study results (B10)																																		
	Select transit/TOD consultant(s) (B11)																																		
	Completion of inventory of infill/redevelopment sites along regional transit corridors (B12)																																		
	Contract for Transit/TOD studies (B13)																																		
Phase 2													Complete initial findings of transit/TOD studies (B14)																						
													Solicit comment on draft transit/TOD plans (B15)																						
													Identify TOD-neighborhood revitalization planning areas (B16)																						
													Outreach to neighborhoods near TOD-neighborhood revitalization planning areas (B17)																						
													Completion of Transit/TOD final draft plan (B18)																						
Phase 3													Issue RFP for TOD-neighborhood revitalization planning (B19)																						
													Solicit comment on final draft transit/TOD plans (B20)																						
													Select TOD-neighborhood revitalization planning areas (B21)																						
													Release final transit/TOD plans (B22)																						
													Contract for TOD-neighborhood revitalization planning (B23)																						
													Conduct TOD-neighborhood revitalization planning workshops (B24)																						
												Prepare TOD-neighborhood revitalization draft concept plans (B25)																							
												Input on draft TOD-neighborhood revitalization concept plans (B26)																							
												Final Draft TOD revitalization final concept plans (B27)																							
												Final TOD revitalization concept plans (B28)																							

Phase 1: Learning and capacity building to gain knowledge for informed decision-making and increase abilities to carry out collaborative planning (Months 1-18)

Phase 2: Establish shared sustainability goals and measurable outcomes, and identify potential implementation measures (Months 12-30)

Phase 3: Implementation of goals and outcomes through recommended amendments or updates to public and private plans, policies, and investments (Months 18-36 and ongoing).

Project Schedule
Capital Region Sustainable Communities Initiative



**Project Schedule
Capital Region Sustainable Communities Initiative**

Activity F: Establish sustainability indicators and track progress towards long-term desired outcomes

		2011												2012												2013												2014													
		Mar	Apr	May	Jun	Jul	Aug	Sep	Oct	Nov	Dec	Jan	Feb	Mar	Apr	May	Jun	Jul	Aug	Sep	Oct	Nov	Dec	Jan	Feb	Mar	Apr	May	Jun	Jul	Aug	Sep	Oct	Nov	Dec	Jan	Feb														
		Quarter 1			Quarter 2			Quarter 3			Quarter 4			Quarter 5			Quarter 6			Quarter 7			Quarter 8			Quarter 9			Quarter 10			Quarter 11			Quarter 12																
Phase 1		Contract for Performance Indicator technical support (F1)																																																	
														Draft sustainability indicators (F2)																																					
														Conduct Sustainability Indicator training #1 (F3)																																					
Phase 2														Proposed method for collecting data and reporting performance (F4)																																					
																										Conduct Sustainability Indicator training #2 (F5)																									
P-3																										Prepare Performance Report (F6)																									
																																						Conduct Sustainability Indicator training #3 (F7)													

Phase 1: Learning and capacity building to gain knowledge for informed decision-making and increase abilities to carry out collaborative planning (Months 1-18)

Phase 2: Establish shared sustainability goals and measurable outcomes, and identify potential implementation measures (Months 12-30)

Phase 3: Implementation of goals and outcomes through recommended amendments or updates to public and private plans, policies, and investments (Months 18-36 and ongoing).