

City of Fitchburg Parks & Open Space Proposal

**Parks, Recreation &
Forestry Department**

Edward Bartell

Dana Dentice

January 23, 2008

Goals for Tonight's Presentation

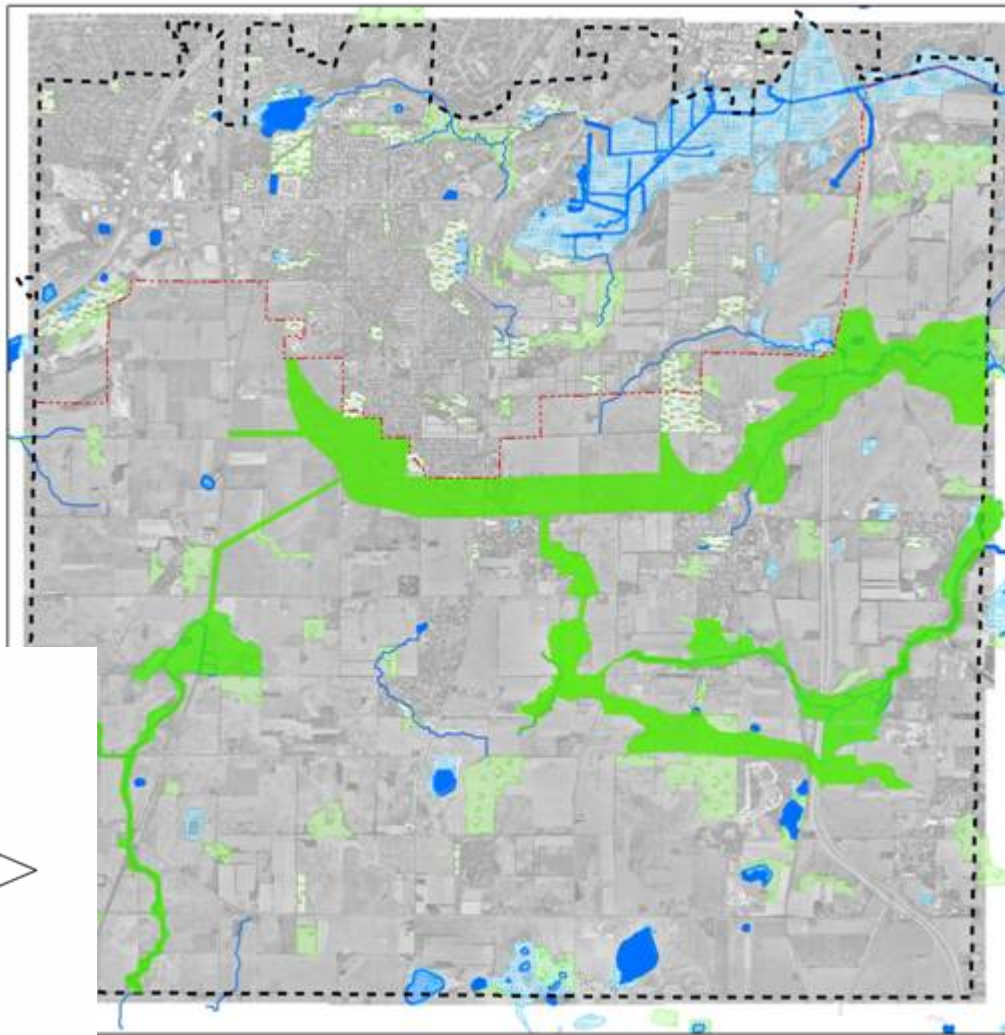
- Get you familiar with the proposal
- Discuss it's progress
- Answer your questions
- Solicit your suggestions and opinions

Things to Keep in Mind

- This is a resource based planning proposal
- What is our intent?
 - Identify sensitive environmental and cultural resources
 - Offer insight for future parks and open space
 - Highlight key areas for possible preservation
 - “Inform their discretion” – Thomas Jefferson

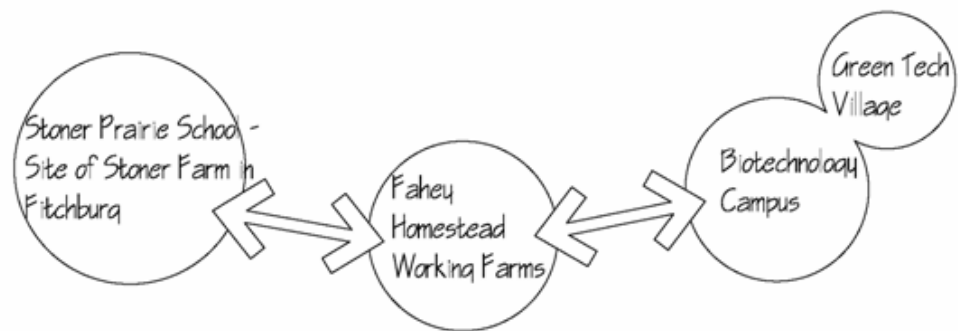
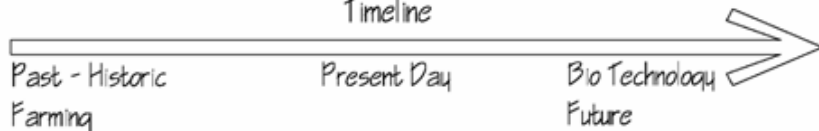
Initial Concept:

Moraine Edge Park & Preserve



Park Concept

The Progression of Farming in Fitchburg
Timeline



Project Goals

- **Use a Resource Based Planning Model to:**
 - Identify all natural and cultural resources within Fitchburg to better determine the most critical areas for protection
 - Inform the public of the value of these resources and their need for protection
 - Guide responsible urban growth and planning decisions

Analysis Criteria

- Environmental Corridors
 - Vegetation
 - Steep topography, moraines
 - Wetlands
 - Hydric soils
 - Water features
 - Public land
 - Dane County env. corridors
- Phil Lewis interpretation
- Cultural resources
 - Archeological trails/sites
 - Historic buildings/sites
 - Historic mines/quarries
 - Territorial roads
 - Lead trails
 - Railroad corridors
- Other Considerations
 - Groundwater recharge
 - Soil productivity
 - Natural Heritage Inventory (threatened/rare species)
 - Future Urban Development

Vegetation

- Economic value
 - Energy conservation
 - Air quality
 - Water pollutant reduction
 - Increased property value
 - Timber products

+200 Year Old Oaks (Cty MM)



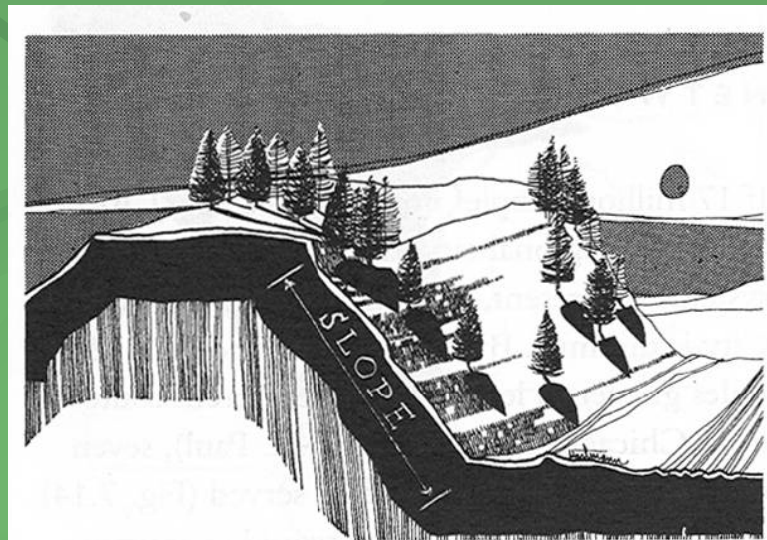
Nobel Woods



- Other Benefits
 - Stabilized slopes
 - Wildlife habitat
 - Aesthetic value
 - Recreational opportunities

Steep Topography

- Building or farming on steep slopes creates erosion problems
- Provides contrasting scenery



Source: Lewis, 2007

Milton Moraine (South of Byrne Rd.)

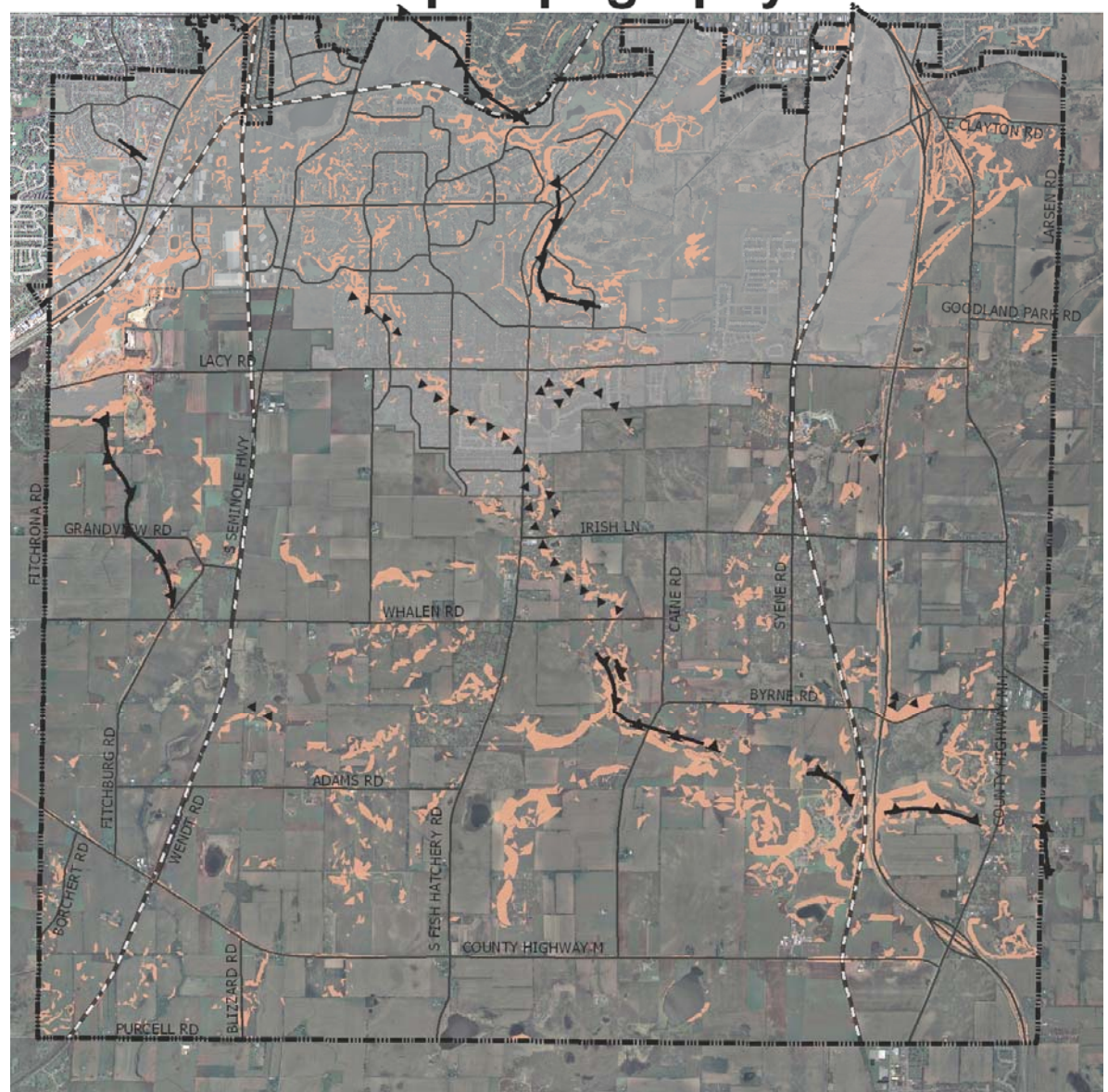


- Slopes of Significance
 - 12% or greater (DCRPC)

Steep Topography

Legend

- ▲ ▲ ▲ Small Moraine
- ▲ — ▲ Medium Moraines
- Slopes 12% and Greater
- Urban Service Area
- Roads
- · — · City Limits
- · — · Railroad Corridor



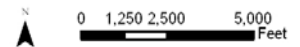
Data Sources:

City of Fitchburg Parks Dept., 2007;

Dane County LIO, 2005.

Wisconsin Geological & Natural History Survey,
1997.

Map prepared by Fitchburg Parks Department,
Jan. 2008



Wetlands

- "Habitat for more species of plants and animals than any other type of landscape."
- WDNR
- Store water to prevent flooding and protect water quality
- Wisconsin only has about half of the 10 million acres present in 1848









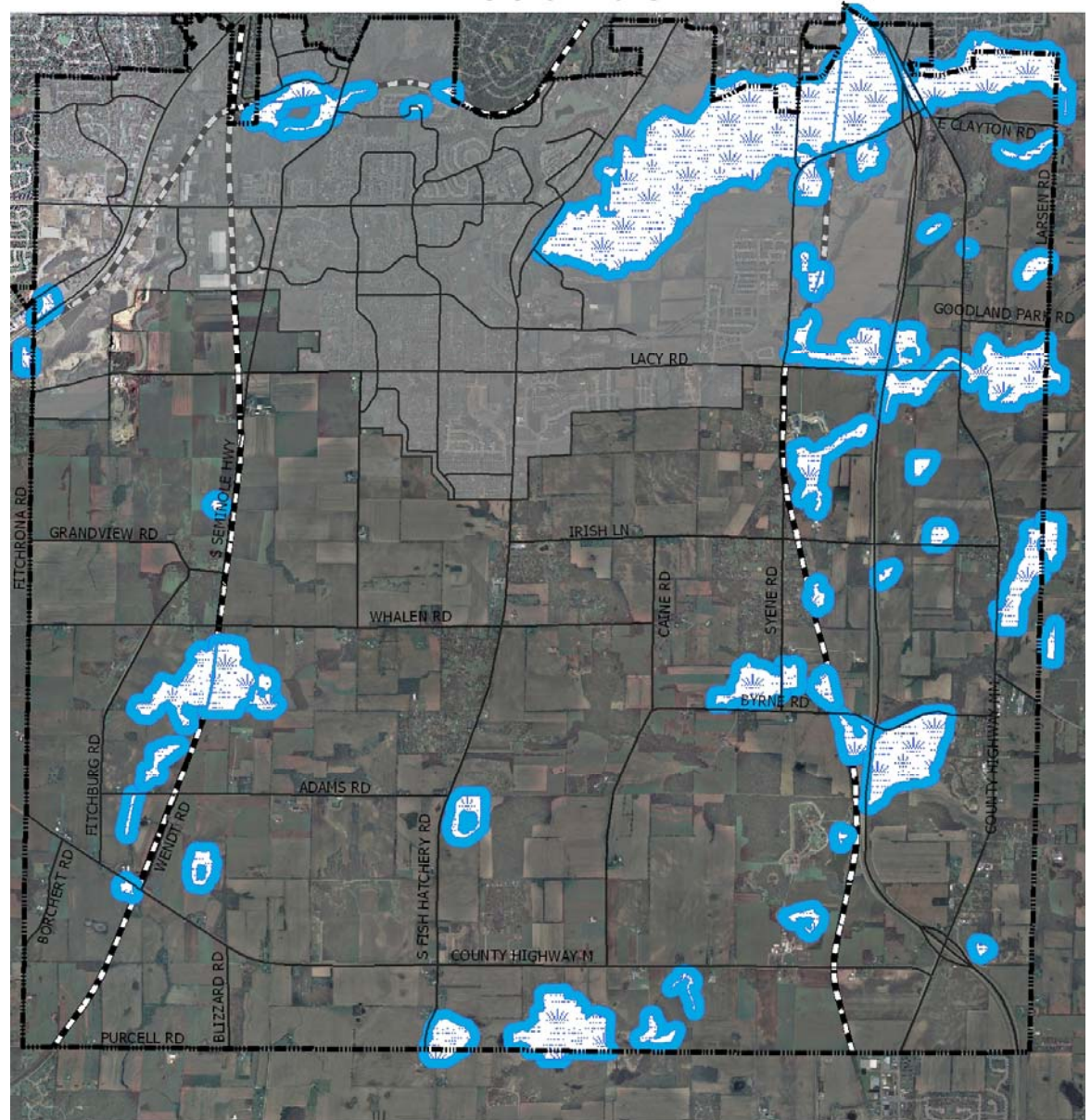
Nine Springs E-Way



Wetlands

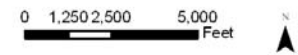
Legend

-  Wetlands
-  300-Ft Wetland Buffer
-  Urban Service Area
-  Roads
-  City Limits
-  Railroad Corridor



Data Sources:
Wisconsin Department of Natural Resources,
1986.

Map prepared by Fitchburg Parks Department,
Jan. 2008



Hydric Soils

Definition:

- “Soil that formed under conditions of saturation, flooding or ponding long enough during the growing season to develop anaerobic conditions in the upper part.” (NRCS)

Why Important?






- Support the growth and regeneration of hydrophytic vegetation
- Role in identification of wetlands
 - Environmental conditions that create hydric soils also favor the formation of many types of wetlands.

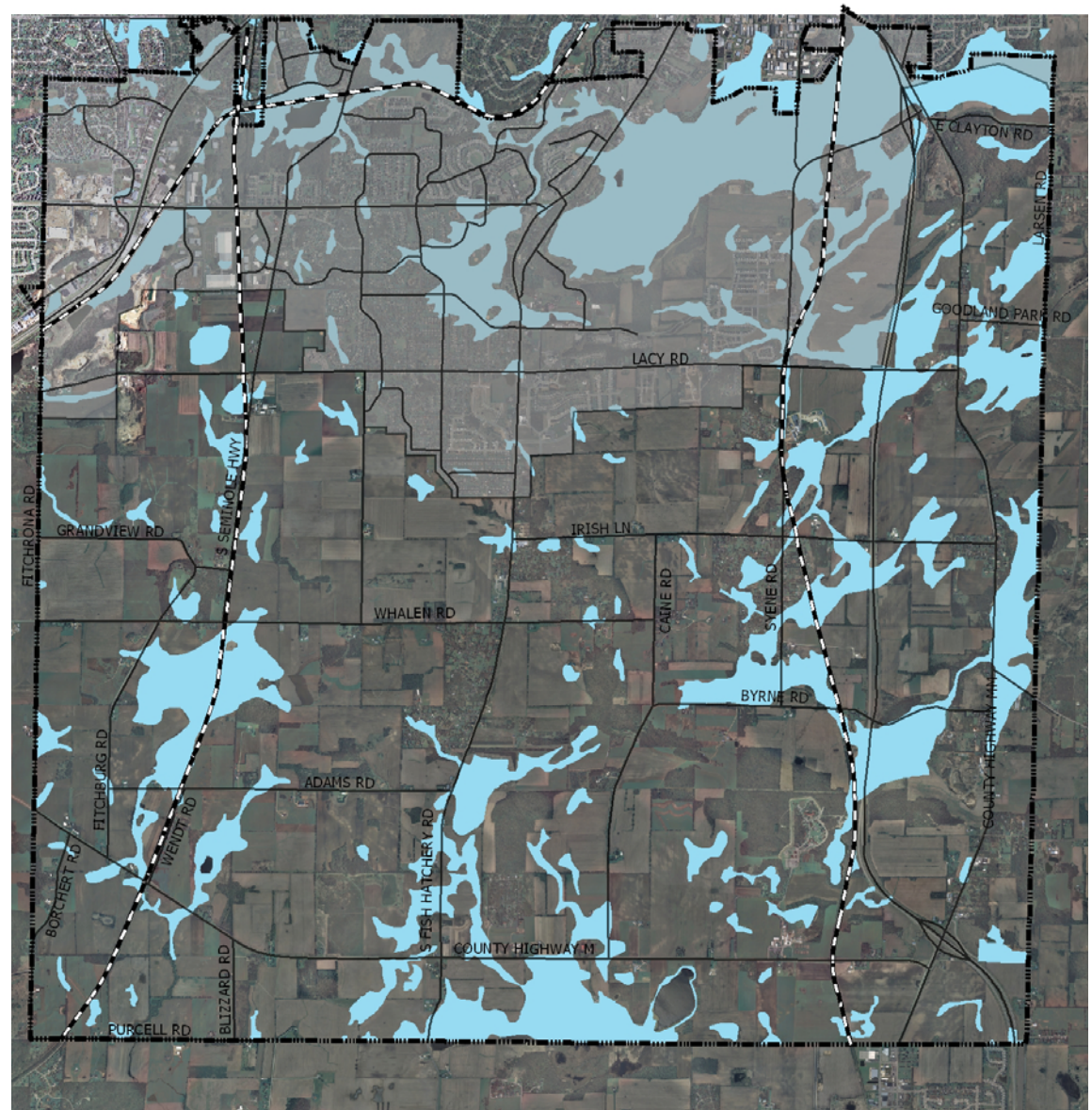


Source: Long Island Soil and Water Conservation District

Hydric Soils

Legend

-  Hydric Soils
-  Urban Service Area
-  Roads
-  Railroad
-  City Limits



Data Sources:
Dane County, NRCS, 1996.

Map prepared by Fitchburg Parks Department,
Jan. 2008

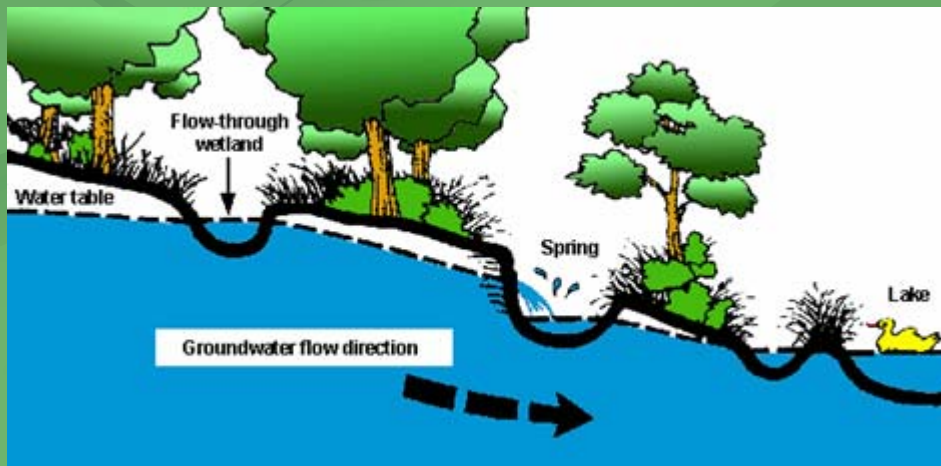
0 1,250 2,500 5,000
Feet



Water Resources

- 70% of terrestrial animals use riparian corridors (NRCS)
- “Kept clean, water offers vast acreages of resource quality and open space within the corridor pattern.” ~ Phil Lewis

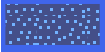




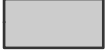



Nine Springs Creek

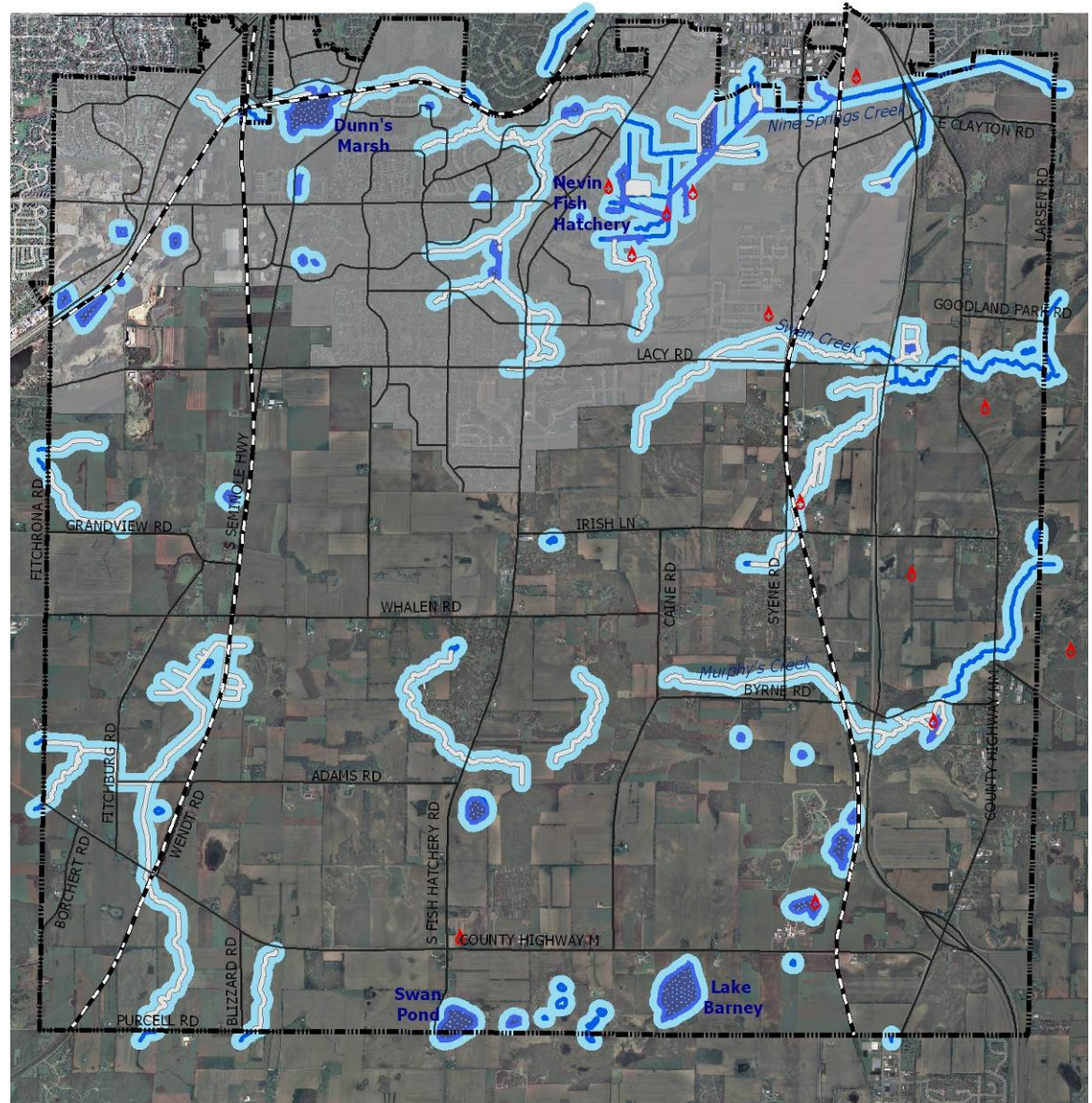


Source: Cornell Cooperative Extension, July 1988;
OSU, 2006.

Water Resources

Legend

-  Open Water
-  300-Foot Buffer
-  Intermittent Water
-  Stream
-  Spring
-  Urban Service Area
-  Railroad Corridor
-  Roads
-  City Limits



Data Sources:

Dane County Land Information Office, 2000;
 WI Department of Natural Resources, 2004;
 Macholl (WI Wildlife Federation), 2007.

Map prepared by Fitchburg Parks Department,
 Jan. 2008

0 1,250 2,500 5,000 Feet










Public Lands

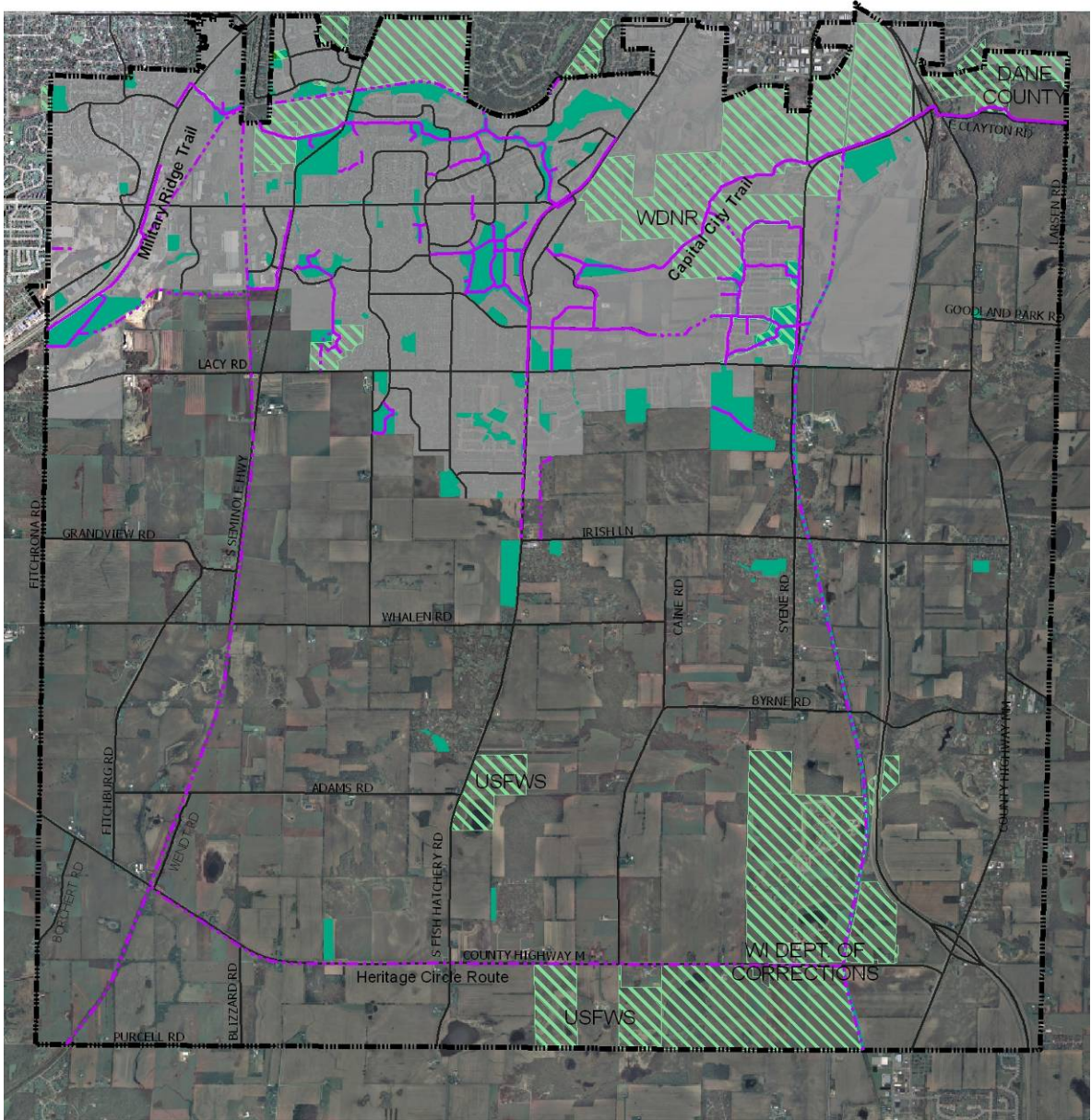
- City parks and open space
- County, State, and Federal land
- Recreational trails



Public Lands

Legend

-  Existing Rec. Trail
-  Proposed Rec. Trail
-  Other Public Land
-  City of Fitchburg Property
-  Urban Service Area
-  Road
-  City Limits



Data Sources:
 Dane County Land Information Office, 2004;
 Madison Metropolitan Planning Organization,
 Jan. 2006; City of Fitchburg, 2007.

Map prepared by Fitchburg Parks Department,
 Jan. 2008



Cultural Resources

“Linking natural and cultural resources into meaningful patterns provides the foundation for fostering a more holistic and comprehensive understanding of a region.

McKenna Barn (late 1800s)



McCoy Farmhouse (1852)

Such comprehension is the precursor for sustainability, high quality of life, sense of place, integration of art and life, diversity and options from which to choose, and provides the basis for education and tourism.”

~Phil Lewis

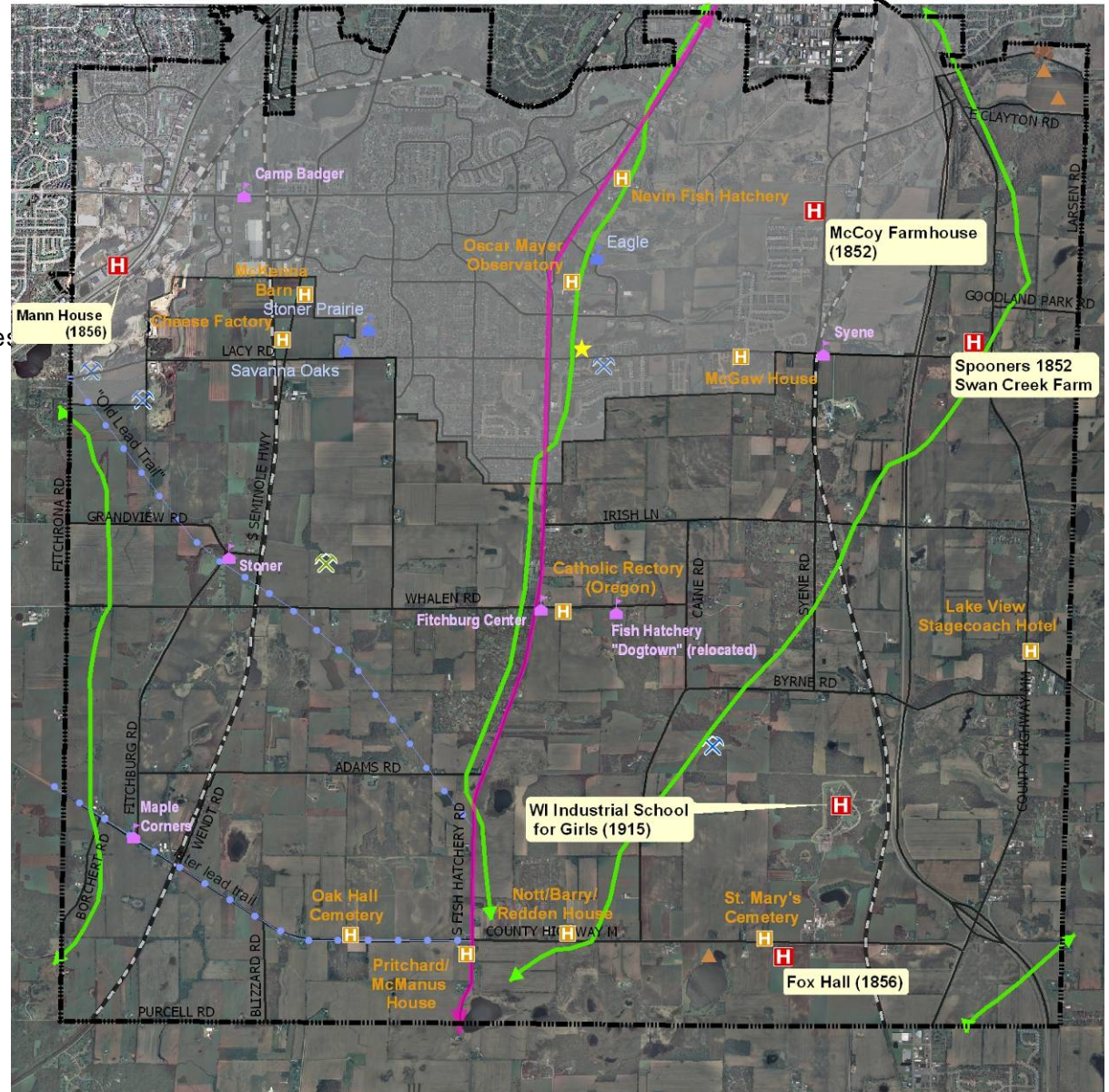
Cultural and Historical Resources

Legend

- ★ City Hall
- ⚡ Historic Lead Mine
- ⚡ Historic Stone Quarry
- 🏫 Existing School
- 🏫 Historic School Building
- 🏠 Historic Building/Site
- 🏠 National Register of Historic Places
- Lead Trail
- ↔ Territorial Road
- ↔ Historic Trail
- ▲ Historic Camp
- ⊙ Mound Group
- ☐ Urban Service Area
- City Limits
- Roads
- Railroad Corridor

Data Sources:
 Fitchburg Landmarks Preservation Commission, 1999; Kinney, 1993; Warner, 1873; Fitchburg Planning Dept, Feb. 2004; Brown and W.W. Hixon & Co., 1924.

Map prepared by Fitchburg Parks Department, Jan. 2008



Environmental Corridors

- “Continuous systems of open space...that include environmentally sensitive lands and natural resources requiring protection from disturbance and development, and lands needed for open space and recreational use.”

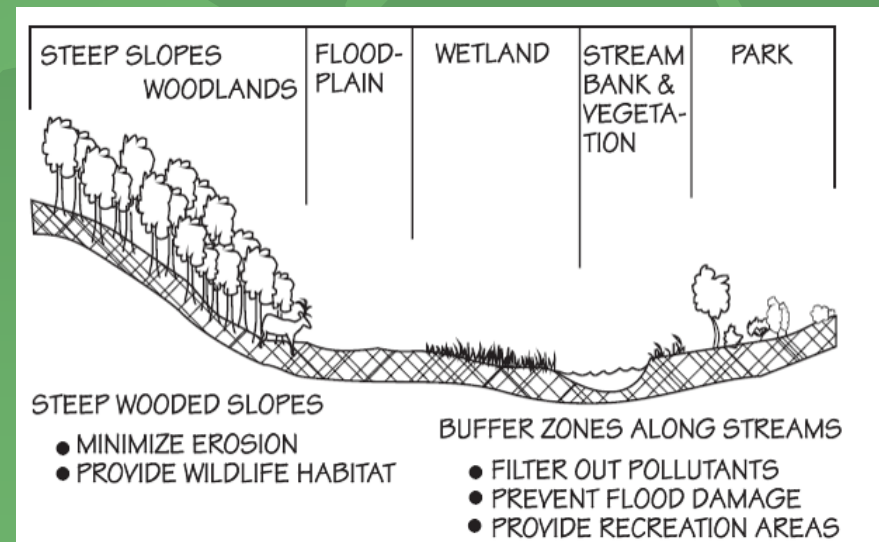
(Dane County Dept. of Planning and Development)

- “Areas in the landscape containing especially high value natural, scenic, historic, scientific, and recreational features.”

(SE WI Regional Planning Commission)

- “Provide an avenue for wildlife movement, protection of natural resources, and green space buffers for humans.”





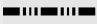
(Church, 2001)

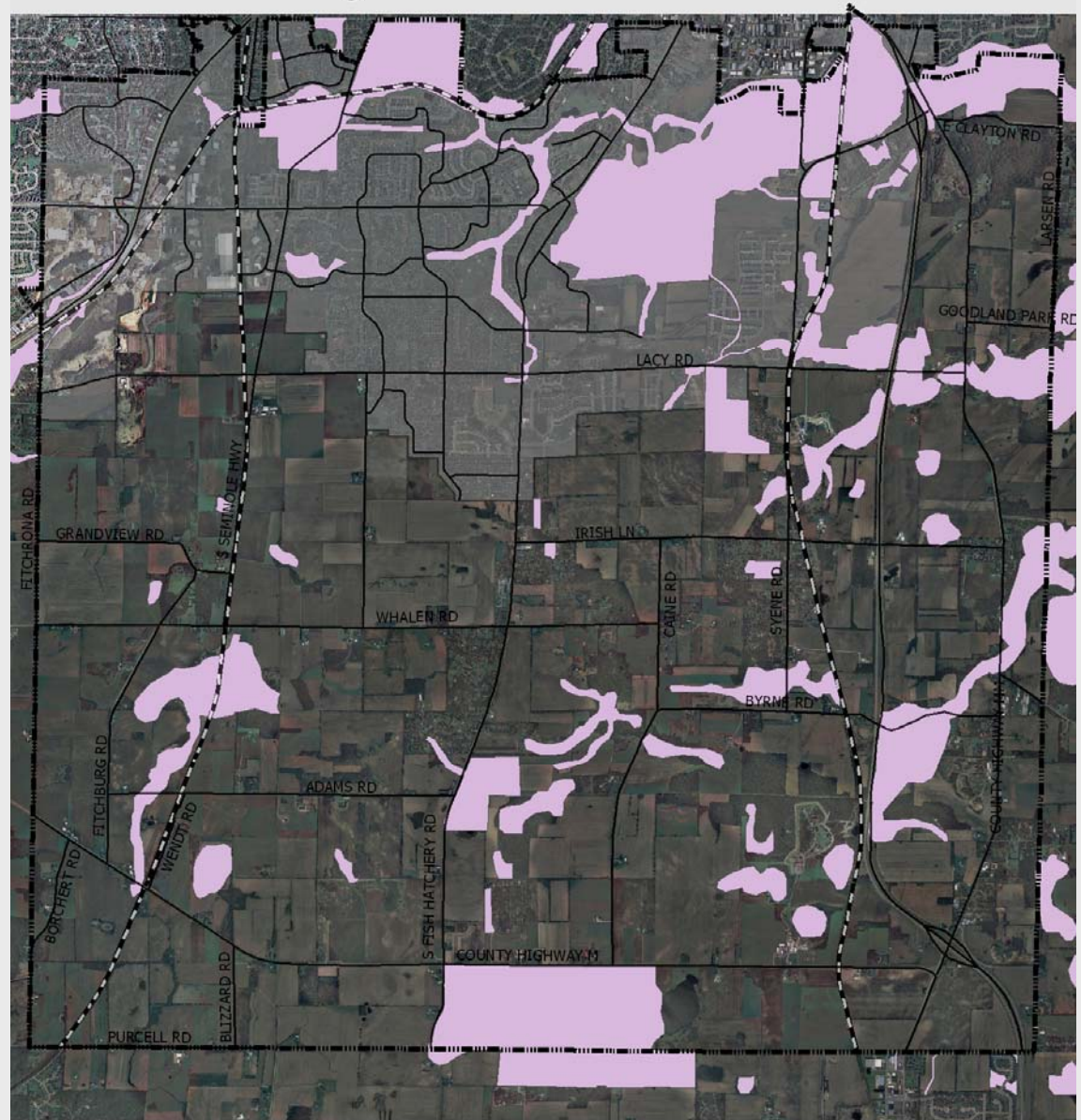


Source: Dane County Dept. of Planning and Development, 1997.

Dane County Environmental Corridors

Legend

-  Environmental Corridor
-  Urban Service Area
-  Roads
-  Railroad Corridor
-  City Limits










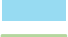




Data Sources:
Dane County Regional Planning Commission,
July 2006.

Map prepared by Fitchburg Parks Department,
Jan. 2008
















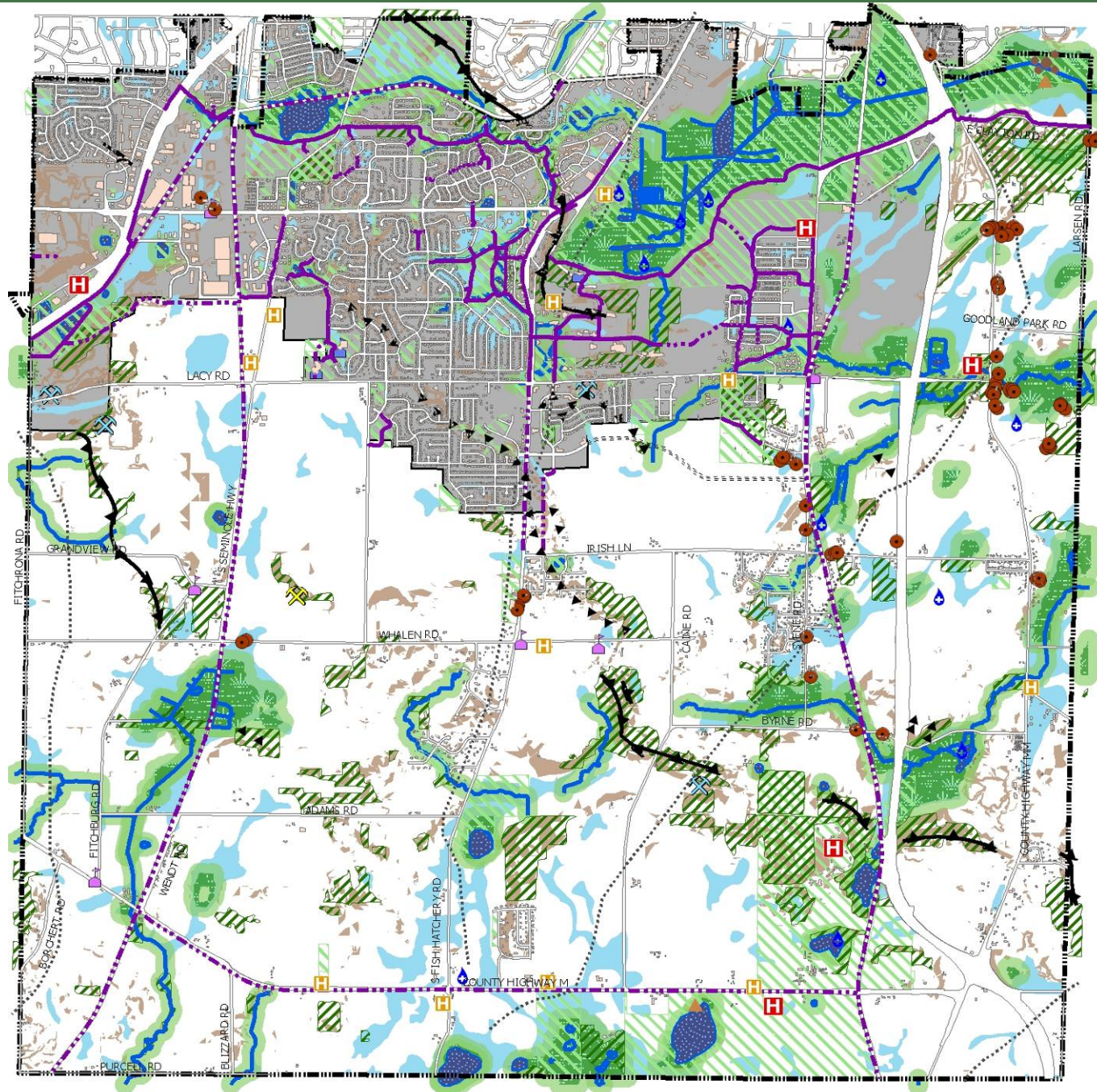
0 1,250 2,500 5,000
Feet

Environmental Corridor

-  Woodlot
-  Wetlands
-  Open Water
-  Streams/Water
-  Small Moraine
-  Medium Moraines
-  Public Land
-  Hydric Soils
-  300-ft Buffer
-  Slopes 12% and Greater
-  Spring
-  Heritage Oak Tree

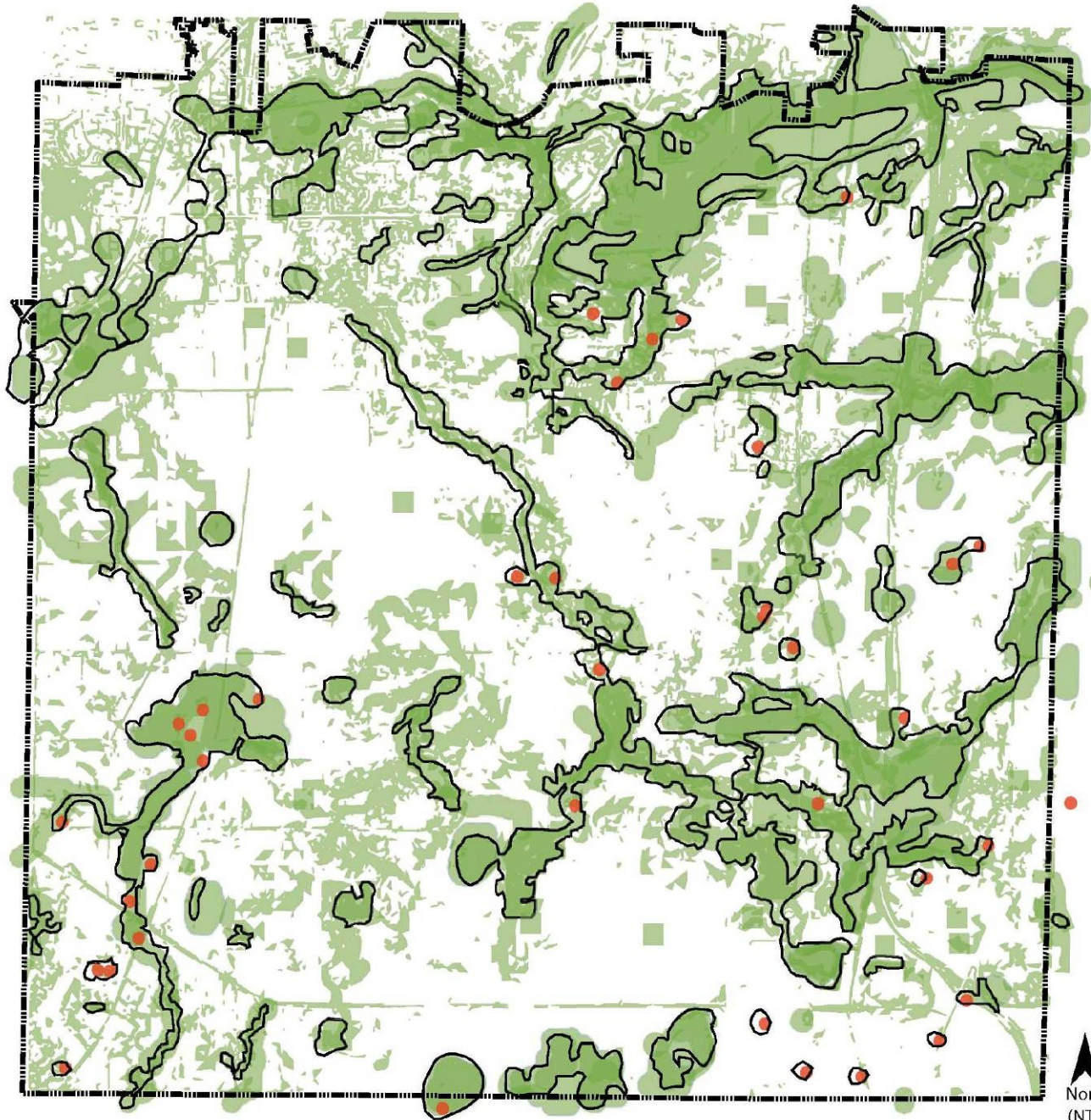
Cultural Resources

-  Historic Trail
-  Mound Group
-  Historic Camp
-  Building Footprint
-  Historic Building/Site
-  National Register of Historic Places
-  Historic Schoolhouse
-  Current School
-  Historic Lead Mine
-  Historic Stone Quarry
-  City Limits
-  Existing Rec. Trail
-  Proposed Rec. Trail

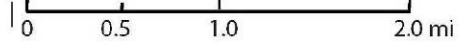


Prime Environmental Corridors

City of Fitchburg
Dane County, WI



- Natural Spring/ Recharge
- Cultural Resource
(Historic Structures, Schools-Existing and Historic, cemeteries, mines and quarries, archaeological sites, & mounds)
- Prime Environmental Corridor
(Highest resource diversity)
- Natural Resource
(Waterways, wetlands, steep topography, heritage oaks, rare plant habitat, & moraines) woodlands)



Other Considerations

- Natural Heritage Inventory
- Scenic Resource Inventory
- Groundwater Recharge
- Soil Productivity

Natural Heritage Inventory

- Rare or declining species
- High quality or rare natural communities
- Unique and significant natural features and special geologic features

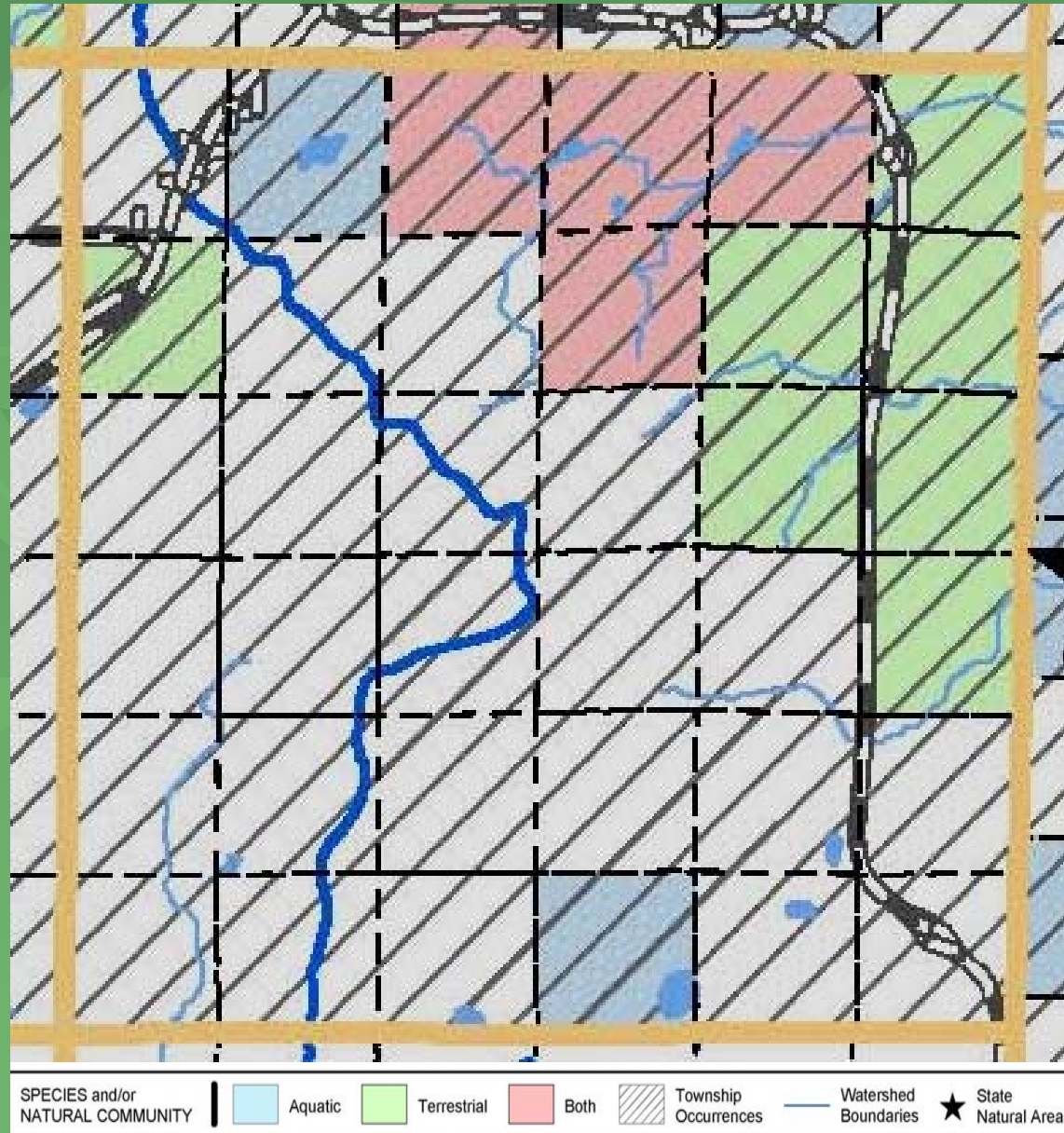


Source: WDNR, 2007.



Fitchburg NHI Occurrences

- Data generalized to section or township level for protection of resource
- Plant occurrences in NE Neighborhood



Scenic Resource Inventory

- Benefits of Scenic Resources:
 - Higher property values
 - Increased tourism revenue
 - Sense of place
 - Improved personal well-being
- Protect scenic vistas and viewsheds from the effects of haphazard development
- Outcome of Fall Inventory
 - 4 participants
 - 2 choose locations outside USA



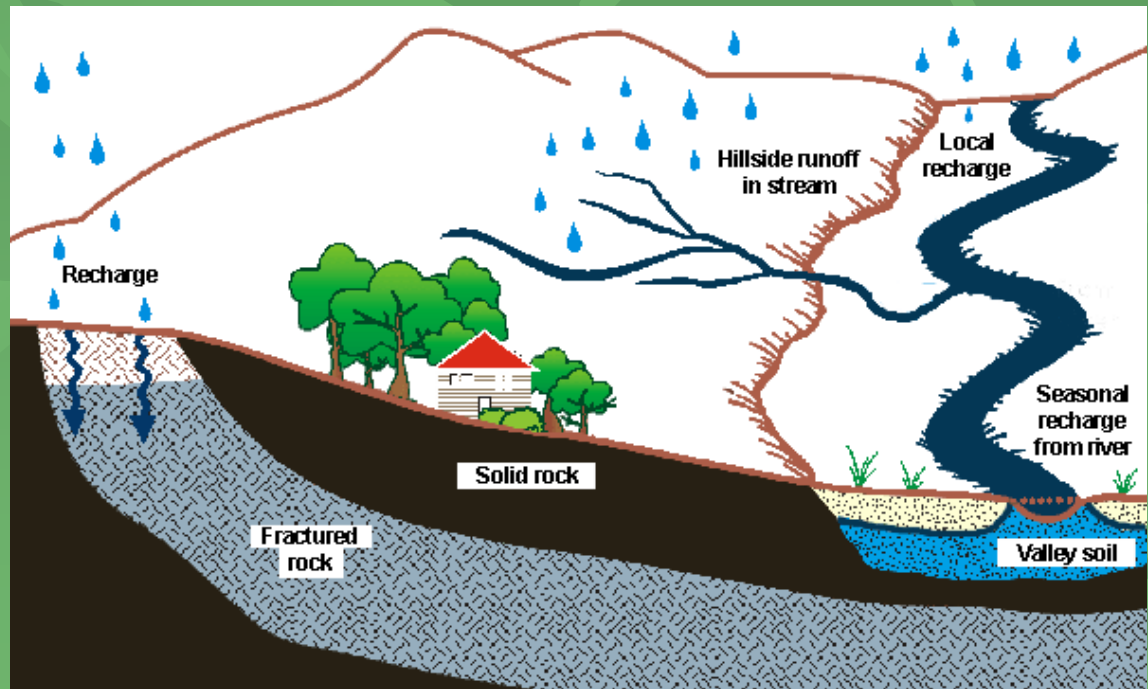
Source: <http://www.douglas.stebila.ca/pictures/2007/anz/>

Groundwater Recharge

- The quality and supply of drinking water is dependent on our groundwater and its recharge
 - 100% of Dane County's drinking water comes from groundwater

- Dane County is withdrawing more groundwater than being recharged


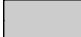


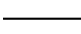
- Diminishing recharge causes area lakes to become the suppliers of groundwater



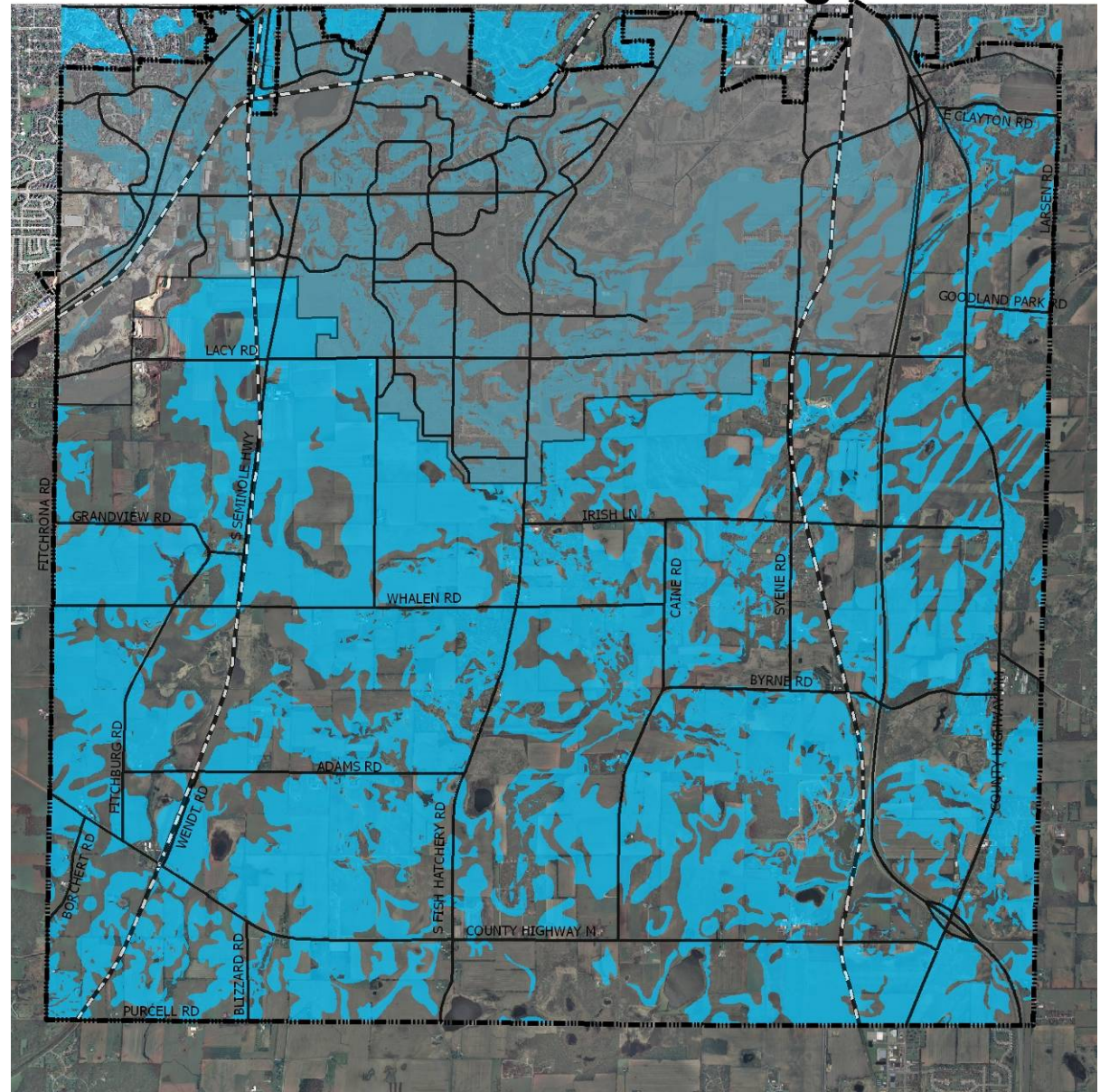
Source: Cornell Cooperative Extension, July 1988; OSU, 2006.

Groundwater Recharge

Legend

-  Top 25% of Infiltration Opportunities
-  Urban Service Area
-  Railroad Corridor
-  City Limits
-  Road

- Mapped top 25% of highest natural infiltration areas (Ratings 7.5-10)
- Infiltration rating determined by soil type and percent slope



Data Source:
Capital Area Regional Planning Commission,
Nov. 2, 2006.

Map prepared by Fitchburg Parks Department,
Jan. 2008

0 1,250 2,500 5,000
Feet



Prime Farmland






Organic Farming on Goodland Park Rd.

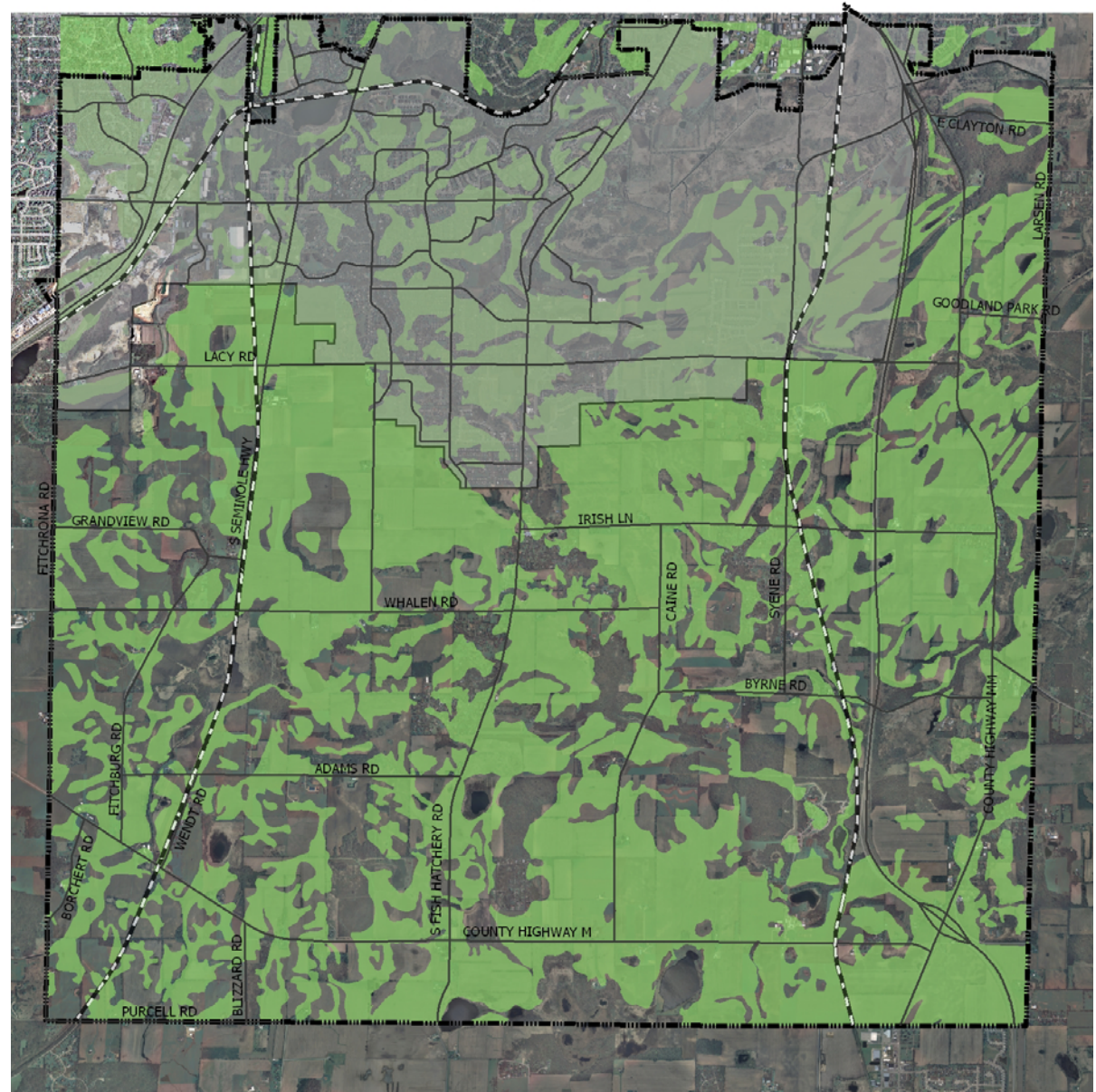


- Protecting our food source and agricultural opportunities...

Productive Soils

Legend

-  Railroad Corridor
-  Roads
-  City Limits
-  Soil Classes 1 & 2
-  Urban Service Area



Data Sources:
Dane County, NRCS, 1996.

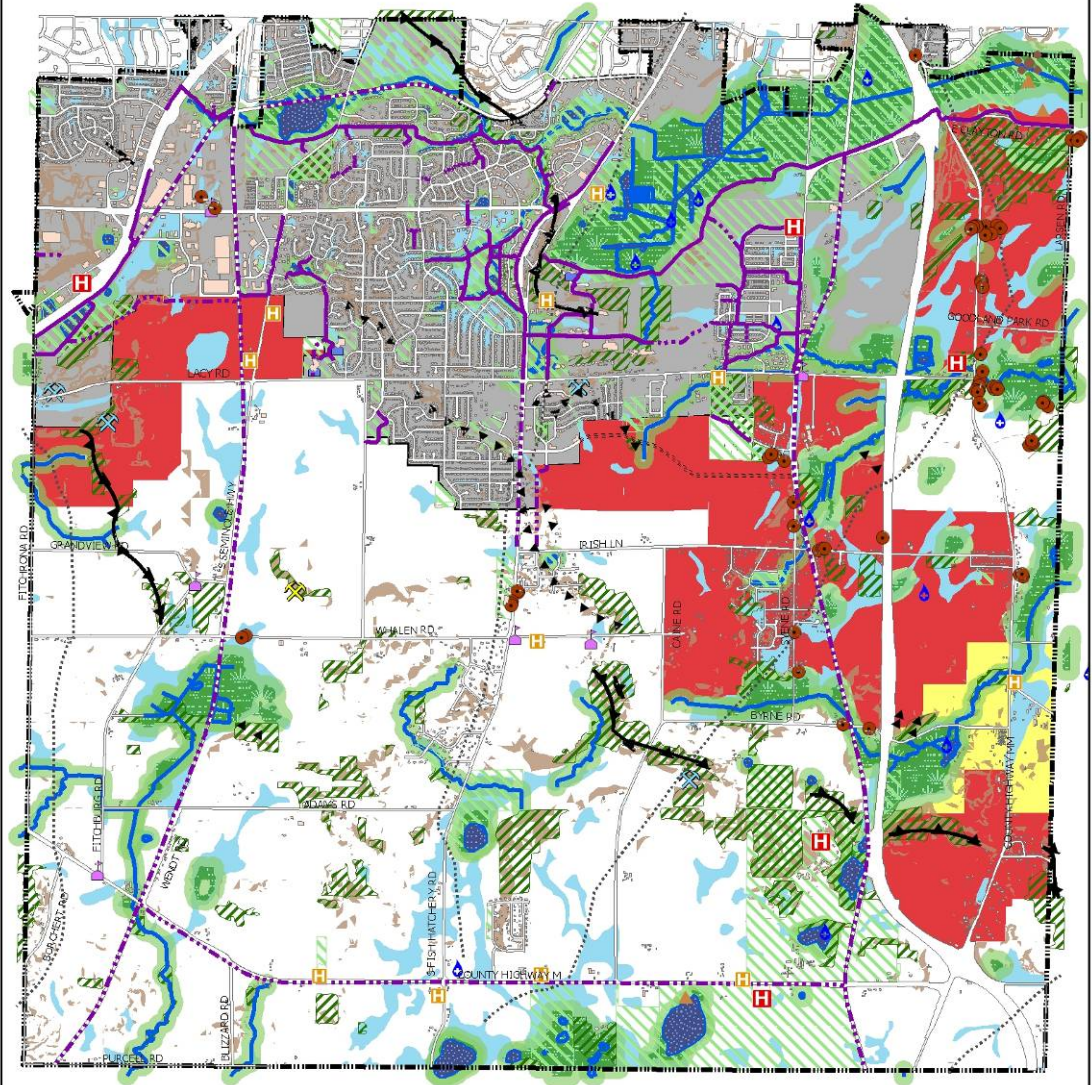
Map prepared by Fitchburg Parks Department,
Jan. 2008

0 1,250 2,500 5,000
Feet

Future Urban Development

- Approved at Oct. 9th Council Meeting

Resource Based Open Space Planning



Environmental Corridor		Cultural Resources	
Woodlot	Public Land	Historic Trail	Historic Schoolhouse
Wetlands	Hydric Soils	Mound Group	Current School
Open Water	300-ft Buffer	Historic Camp	Historic Lead Mine
Streams/Water	Slopes 12% and Greater	Building Footprint	Historic Stone Quarry
Small Moraine	Spring	Historic Building/Site	National Register of Historic Places
Medium Moraines	Heritage Oak Tree		
		Proposed Park & Open Space	Urban Service Area
		Urban Growth Boundary	Study Area
		City Limits	Existing Rec. Trail
		Proposed Rec. Trail	

0 1,250 2,500 5,000 Feet

Data Sources:
 Scott, 1976; Alison, 2001; Fitchburg Parks Dept., 2007, 2008; Dane County LJO, 2000, 2004, 2006; WICNR, 1998, 2004; Dane County NRCS, 1996; Macholl (Wildlife Federation), 2007; Warner, 1973; Brown and W.W. Hixon & Co., 1924; Fitchburg Landmarks Preservation Commission, 1989; Madison MPO, Jan. 2006; Dane County RPC, July 2006; Kinney, 1993; Fitchburg Planning Dept., Feb. 2004; Capital Area RPC, Nov. 2005.

Fitchburg Parks Dept.
January 2008

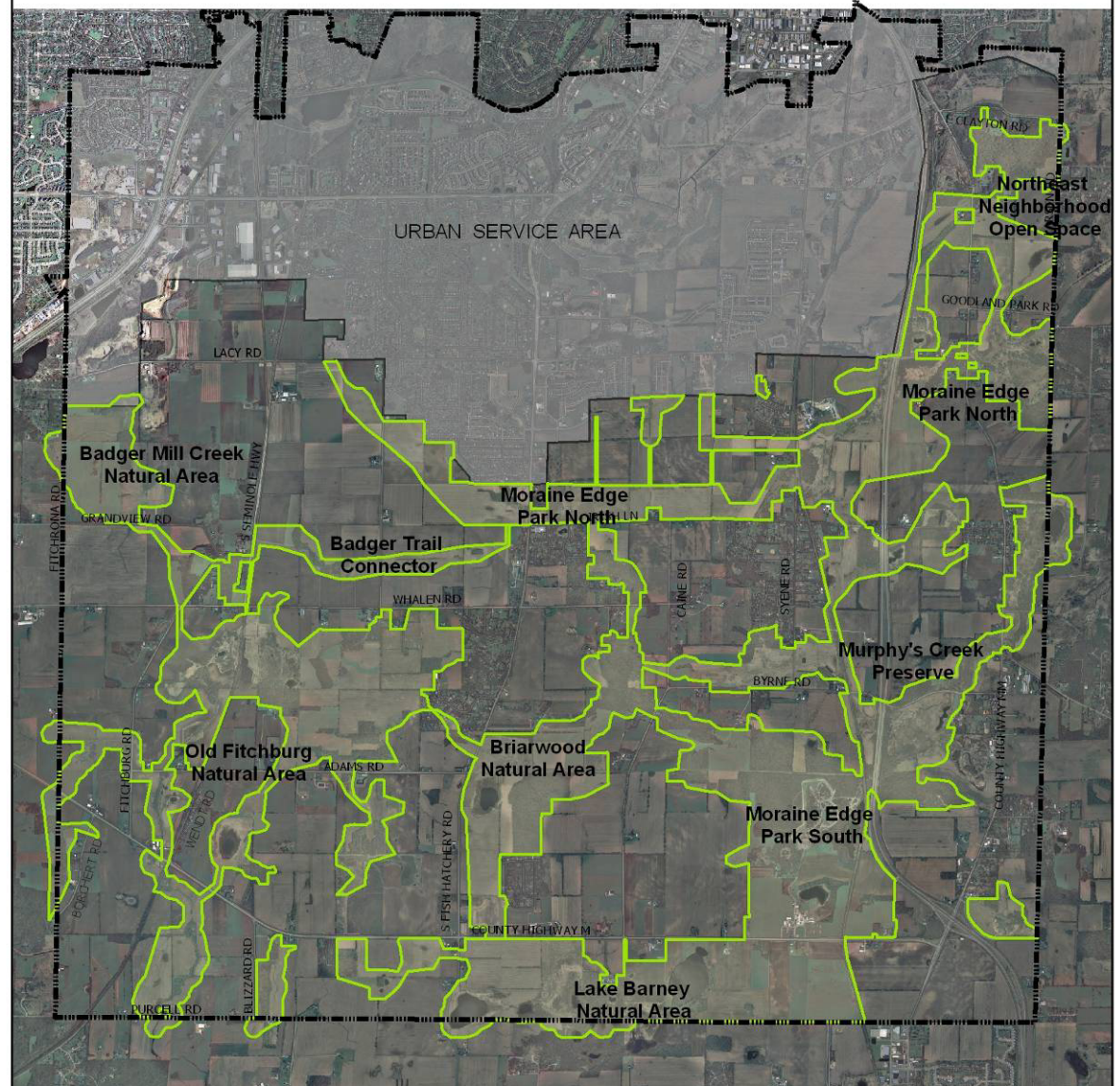
Open Space Boundary Criteria

- Moraine Edge Park (greenbelt)
- Water features, wetlands, and buffers
- Woodlands
- Public lands
- Dane County environmental corridors
- Areas with multiple resources
- Linkages to provide wildlife corridors
- Significant features adjacent to areas listed above
- Exclusion of private structures

Park & Open Space Proposal

~ 6,000 Acres
38% of area
outside USA

~2,100 acres are public
lands and/or water
features (with 75' buffers)



Legend

-  City Limits
-  Proposed Park and Open Space

0 1,250 2,500 5,000 Feet



What's Next

- Staff makes revisions
- Parks Commission approves proposal – February 7, 2008
- Plan Commission considers as part of land use element – February 19, 2008
- Parks Commission Public Hearing – March 6, 2008
- Parks Commission grants final approval – April 3, 2008
- Plan Commission considers as part of land use element – April 15, 2008
- Citizens Advisory Committee reviews land use element with open space proposal

Question and Comments

- Please use forms for questions or comments

“How can we use democratic tools, including education, to help protect our remaining resources as the population grows?”

- Phil Lewis

“Inform their discretion” - Thomas Jefferson

References

- Bradbury, K. & Krohelski, J. (2005). Groundwater use and its consequences in Wisconsin. WDNR-Groundwater Advisory Committee. [Presentation].
- Church, John. (2001). Environmental corridors: "lifelines for living." Local Government Information and Education Network of the University of Illinois Extension.
- Dane County Department of Planning and Development. (1997). Fact Sheet: Environmental Corridors. Retrieved Jan. 14, 2008 from <http://www.co.dane.wi.us/vis2020/pdf/2020factsheet.pdf>
- Dane County Land Conservation Committee. (2006). 2005 Annual report.
- Lewis, Phil. (2007). Regional design: creating frameworks for quality of life, peace, and survival.
- Long Island Regional Envirothon (2006) – Soils. Retrieved Dec. 9, 2007 from <http://www.co.suffolk.ny.us/webtemp3.cfm?.dept=18&id=822>
- Murrell, Matthew D. (Jan. 2003). The definition and mapping of environmental corridors by three regional planning commissions. *Research Management Findings*. Bureau of Integrated Science Services- WDNR.
- NRCS. (2004). Hydric Soils - Introduction. Retrieved Dec. 9, 2007 from <http://soils.usda.gov/use/hydric/intro.html>.
- Scenic America (2007). Strategies for protecting scenic views and vistas. Retrieved Oct. 11, 2007 from <http://www.scenic.org/easements/strategies?print=y>.
- WDNR. (2007). Wisconsin wetlands. Retrieved Aug. 25, 2007 from <http://www.dnr.state.wi.us/org/water/fhp/wetlands/introduction.shtml>.