



Public Works
5520 Lacy Road
Fitchburg, WI 53711-5318
Phone: (608)270-4260
Fax: (608)270-4275
www.city.fitchburg.wi.us

News Release

March 27, 2020

For more Information Contact:
Bill Balke, City of Fitchburg Senior Transportation Engineer
608-270-4264, bill.balke@fitchburgwi.gov

Badger State Trail / McKee Road Crossing to Close Monday, April 27, 2020

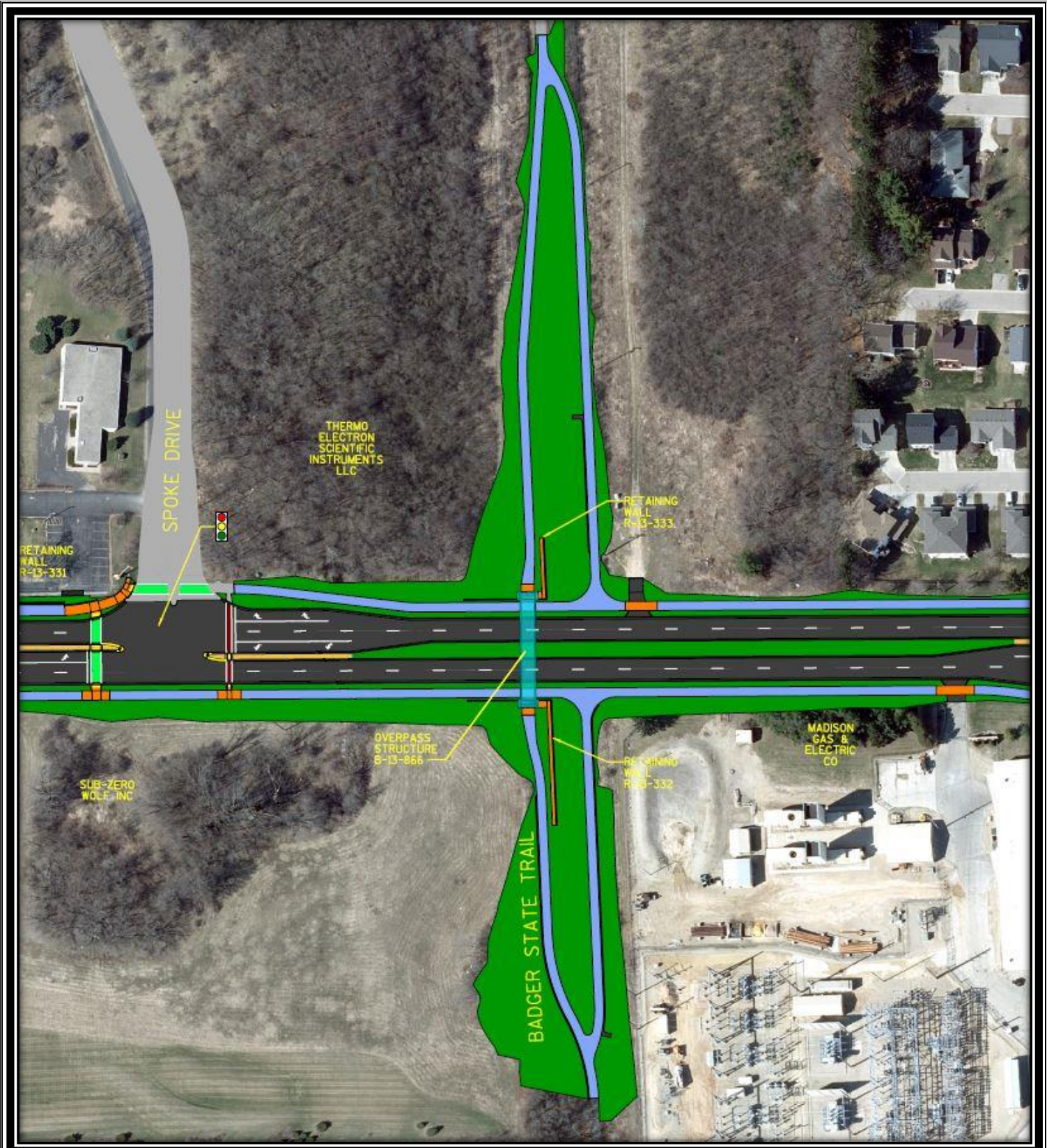
FITCHBURG, WI – The reconstruction McKee Road includes the construction of a new Badger State Trail Bridge over McKee Road. During the construction of the bridge, a detour of the path will be in place until the end of August 2020, provided favorable weather and material delivery outcomes.

For northbound travel, the detour will divert path traffic onto Sub Zero Parkway to Commerce Park Drive to Cottonwood Street, then use the Military Ridge Trail to the Bike Roundabout to regain access to the Badger State Trail. Directional signage will be posted along the detour to alert cyclists of route changes.

For southbound travel, the detour will divert Badger State Trail traffic onto the Military Ridge Trail, then exiting onto Cottonwood Street to Commerce Park Drive to Sub Zero Parkway to regain access onto the Badger State Trail. Directional signage will be posted along the detour to alert cyclists of route changes.

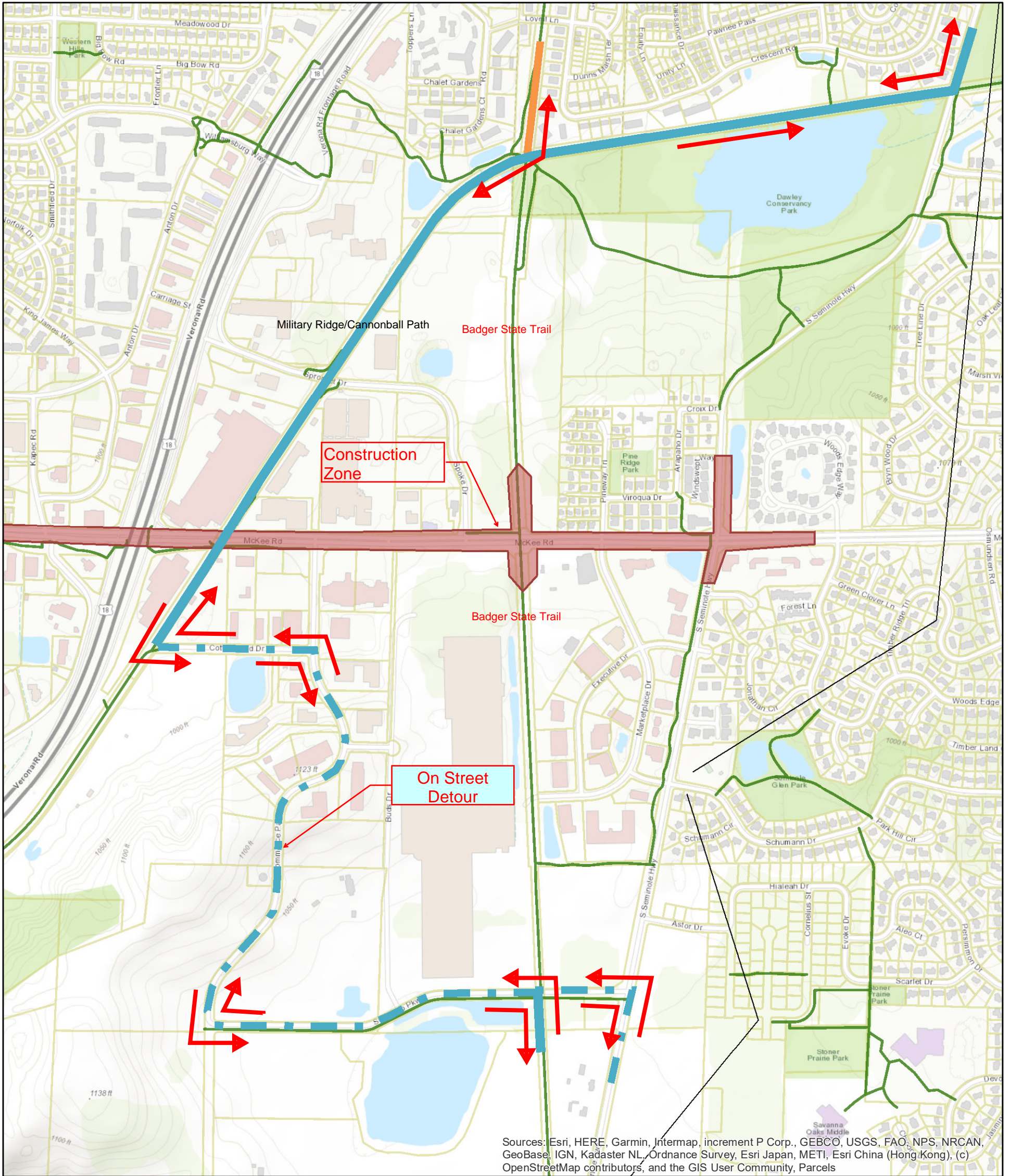
Cyclists that use Seminole Highway are encouraged to use the detour route because the construction on Seminole Highway around McKee Road will cause the lanes to narrow to 11-feet, with one lane of travel in each direction.

Be aware of message board alerts and Stay Connected to the City website (<http://www.fitchburgwi.gov/>) for additional information.



Badger State Trail /
McKee Road Overpass

Badger State Trail Bike Detour



April 23, 2020

Bike Paths

- Existing
- Under Construction
- ⋯ Parcels

