

# Curry Court and Old Indian Trail Watershed Study

## PUBLIC INFORMATION MEETING #1

January 6, 2021

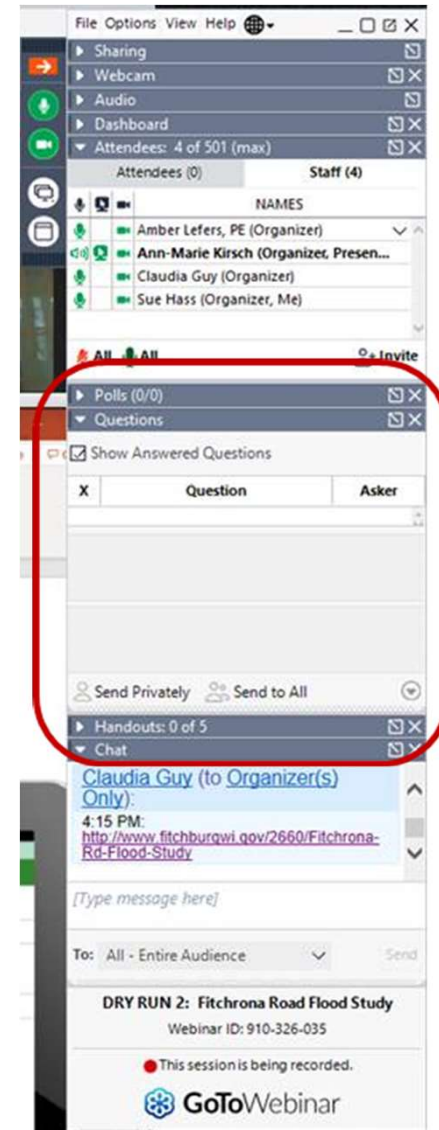


# TEAM INTRODUCTIONS

- **Ann-Marie Kirsch, PE** | AE2S Project Manager
- **Claudia Guy, PE** | City of Fitchburg Environmental Engineer
- **Amber Lefers, PE** | AE2S Water Resources Practice Leader

# MEETING FORMAT AND Q&A

- GoToWebinar for access
- Questions can be asked
  - Electronically during or after the presentation using the **Question function**



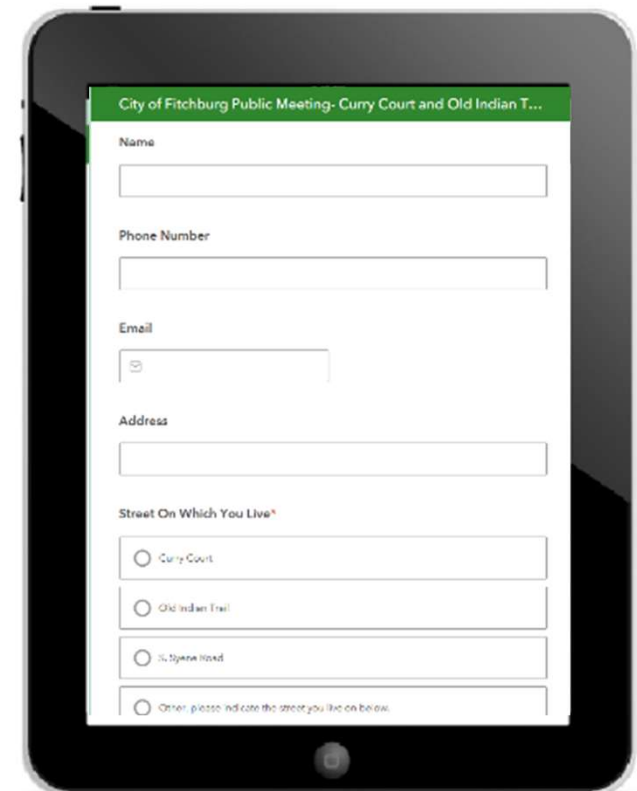
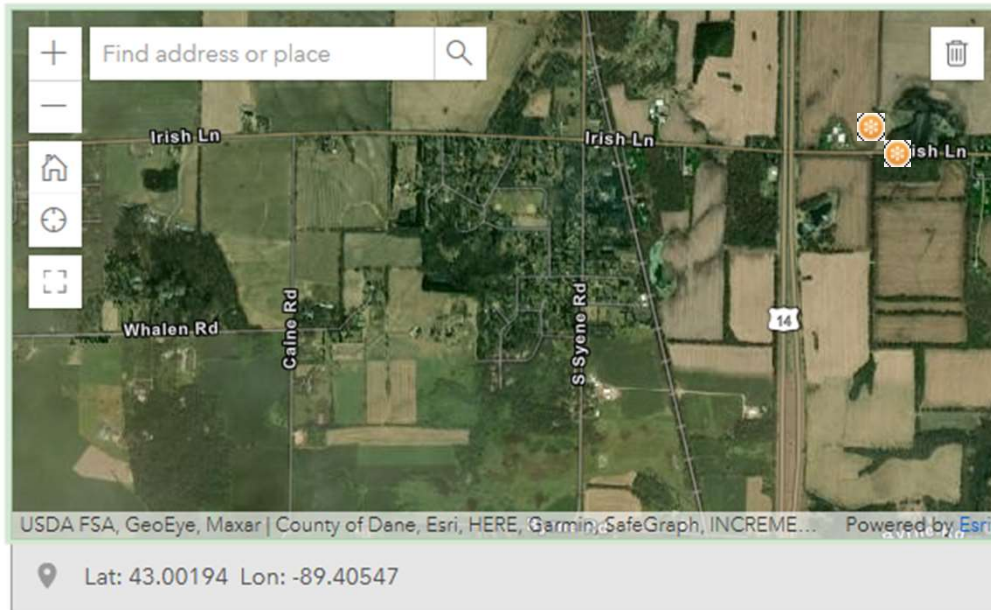
# MEETING FORMAT AND Q&A

- GoToWebinar for access
- Questions can be asked
  - Electronically during or after the presentation using the **Question function**
- After the public meeting through **email** to Claudia Guy: [Claudia.Guy@Fitchburgwi.gov](mailto:Claudia.Guy@Fitchburgwi.gov)

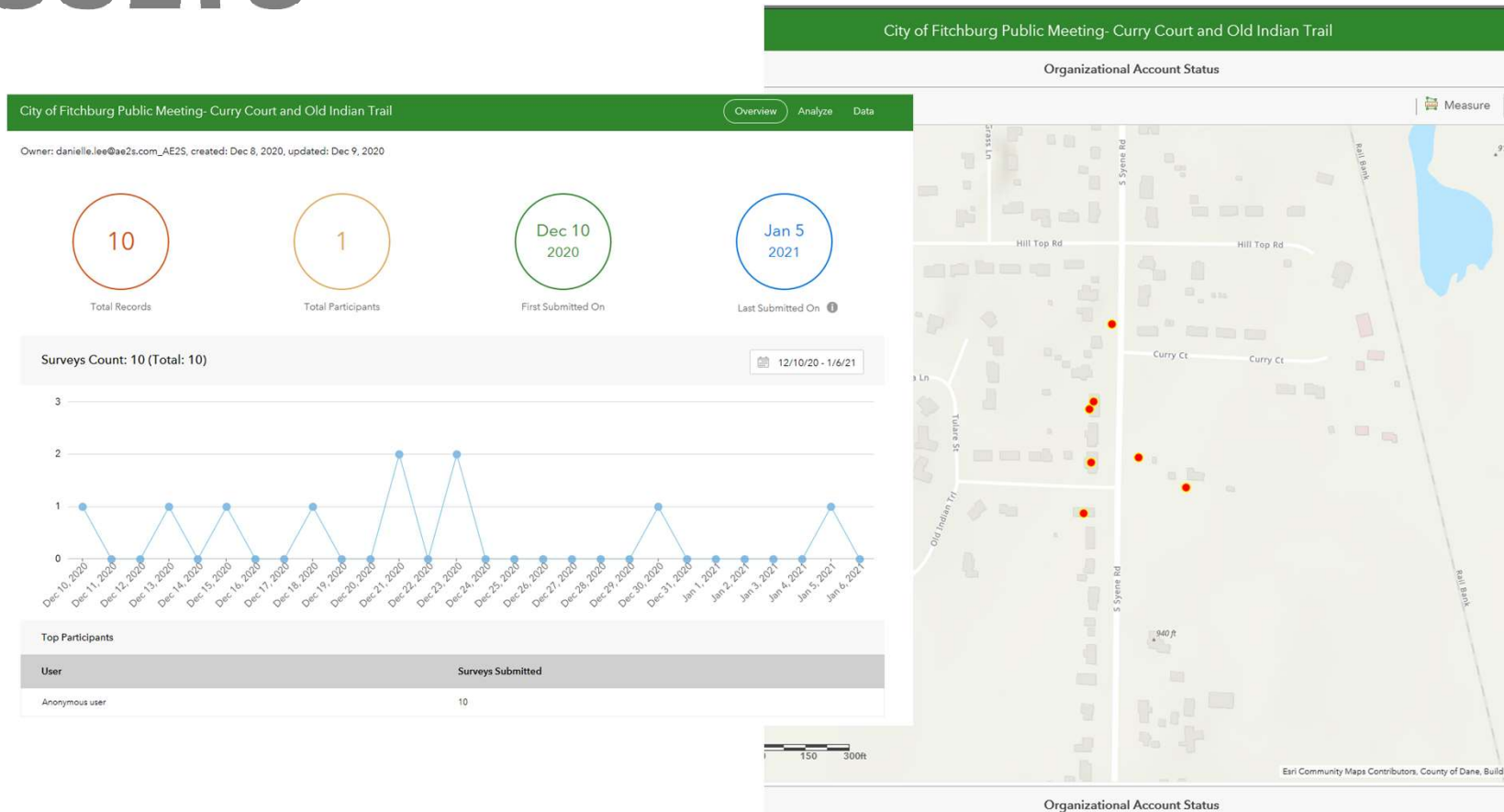


# SURVEY 123 AVAILABLE

Don't forget to fill out Survey 123 regarding local flooding at <https://arcg.is/T4fDK>



# SURVEY 123 PRELIMINARY RESULTS



# Outline

- Project Purpose and Scope
- Known Stormwater Issues
- Existing Drainage Challenges
- Potential Alternatives to Investigate
- Next Steps

# **Project Purpose and Scope**



# Scope

- The project scope includes preparation of a **feasibility analysis** to identify, evaluate, and prepare cost estimates for proposed stormwater improvements to the area of interest.

# **Stormwater Issues Facing the Neighborhood**

Stormwater issues facing the neighborhood include:

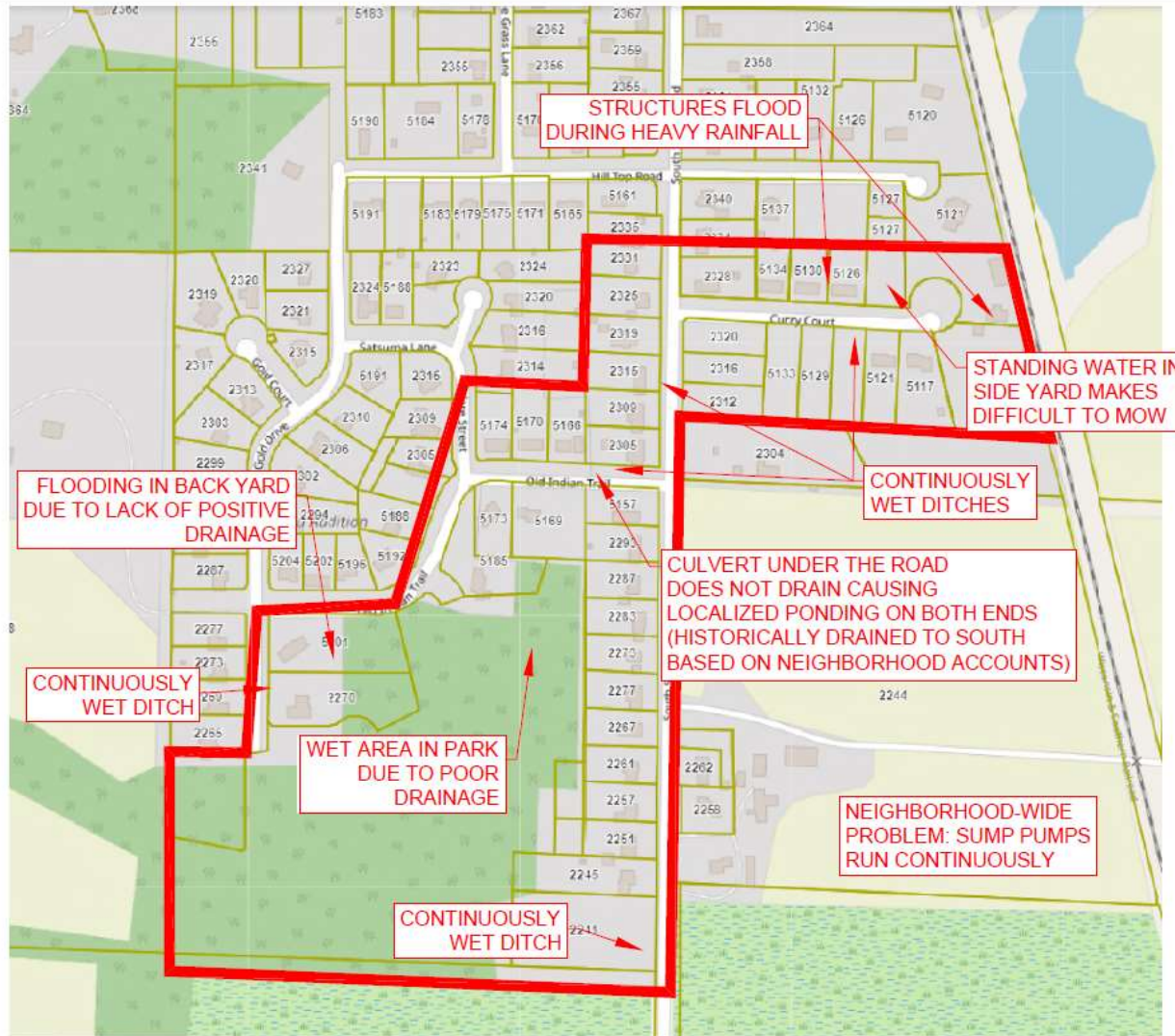
- Slow-moving water stagnating in ditches
- Standing water in yards make it difficult to mow
- Frequent sump pump usage
- Risk of basement seepage



Stormwater issues facing the neighborhood include:

- Risk of first floor flooding
- Risk of basement flooding
- Street flooding



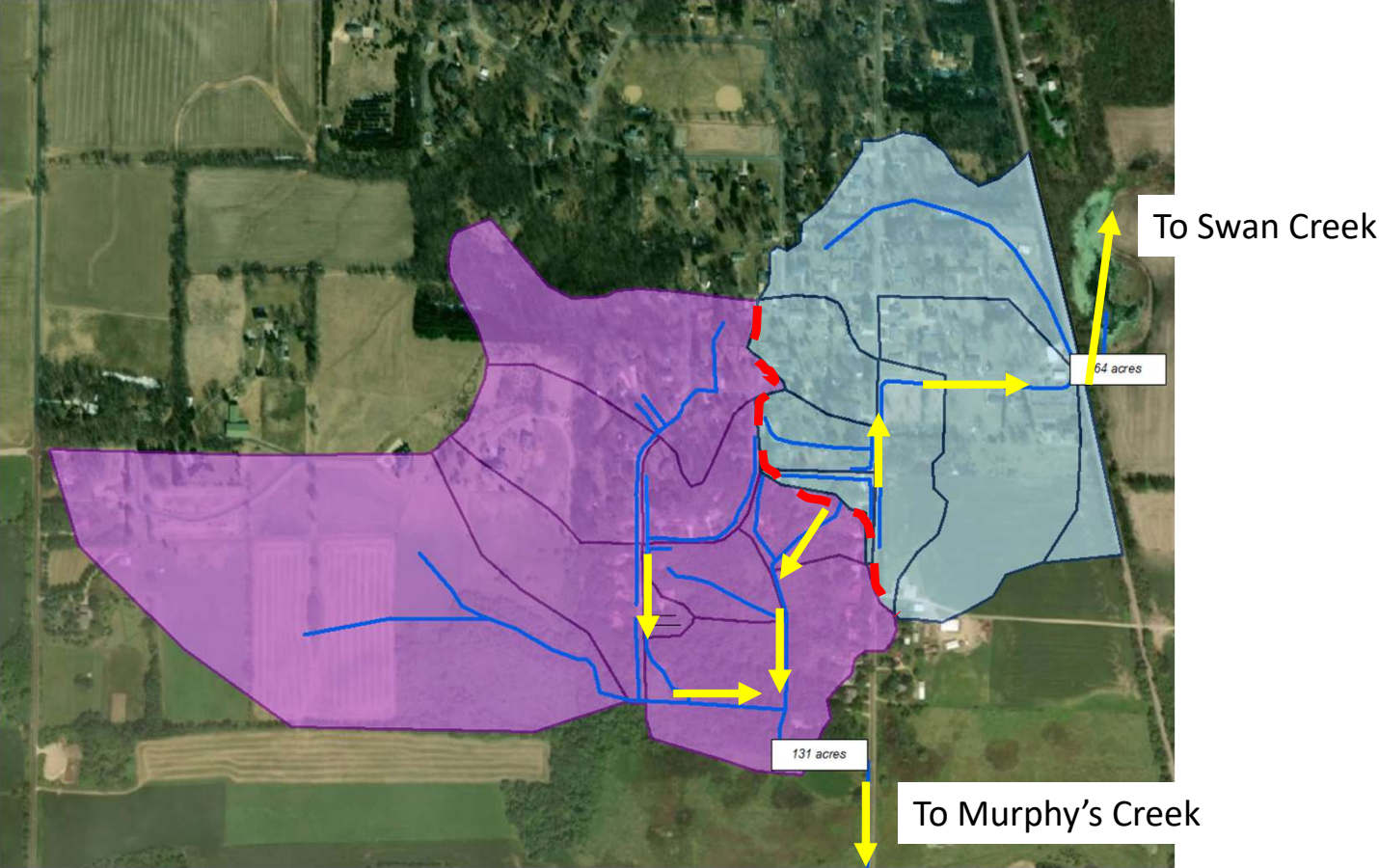


# Did We Miss Anything?

- Please write additional stormwater issues in the comments.
- After the meeting:
  - Fill out Survey 1-2-3  
<https://arcg.is/T4fDK>
  - Email Claudia at  
[Claudia.Guy@fitchburgwi.gov](mailto:Claudia.Guy@fitchburgwi.gov)

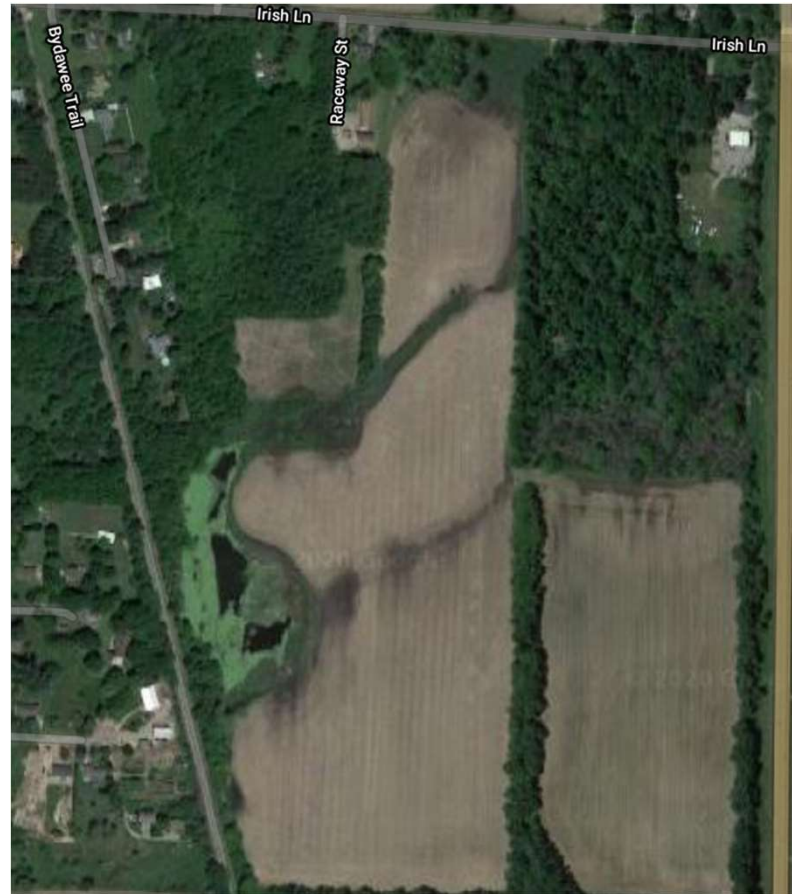
# **Existing Drainage Challenges**

# WHERE'S THE WATER GOING?

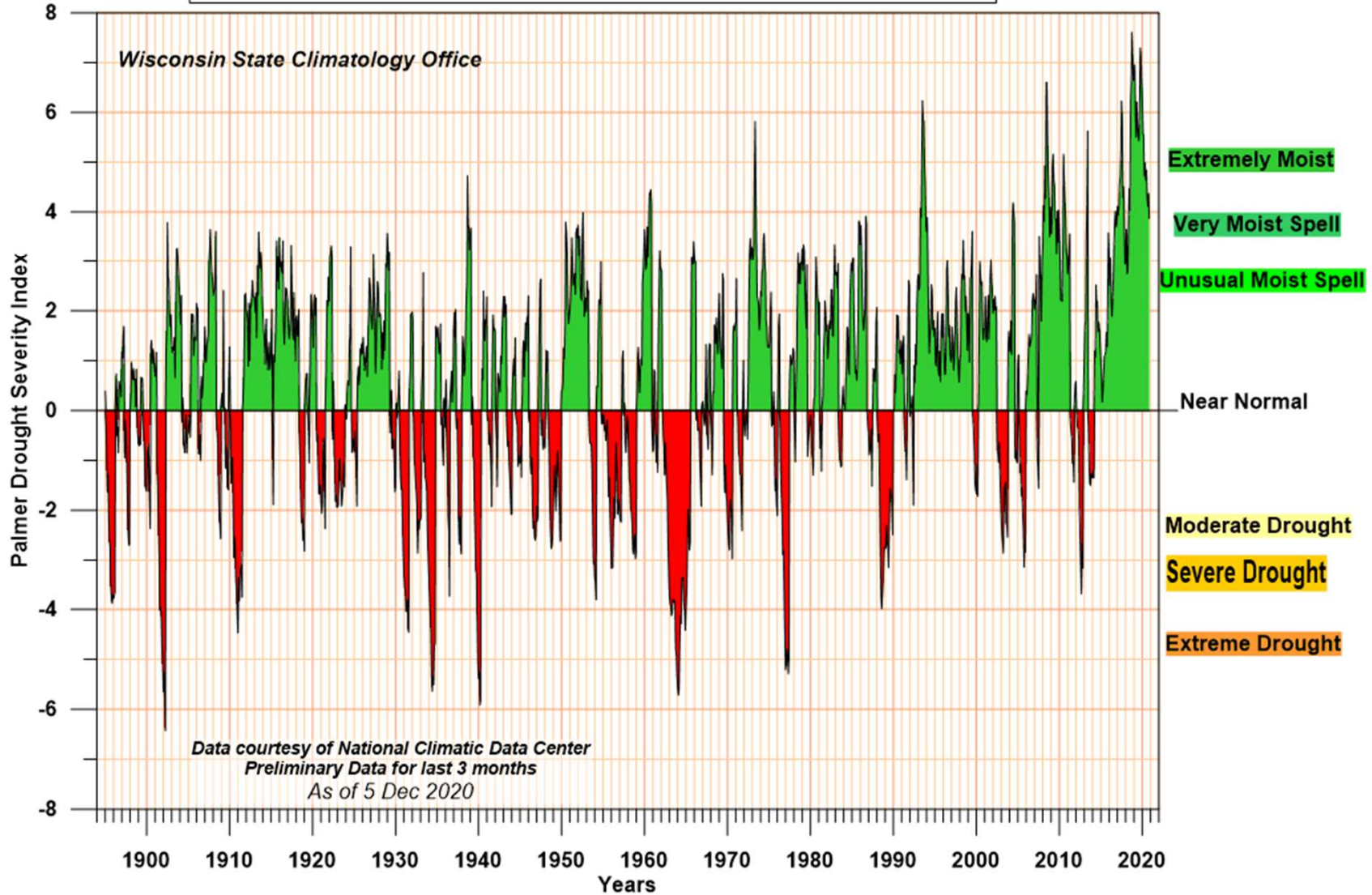


# EXISTING DRAINAGE CHALLENGES

- It has been very wet



**South Central Wisconsin (Div 4708) Palmer Drought Severity Index  
Jan 1895-Nov 2020**

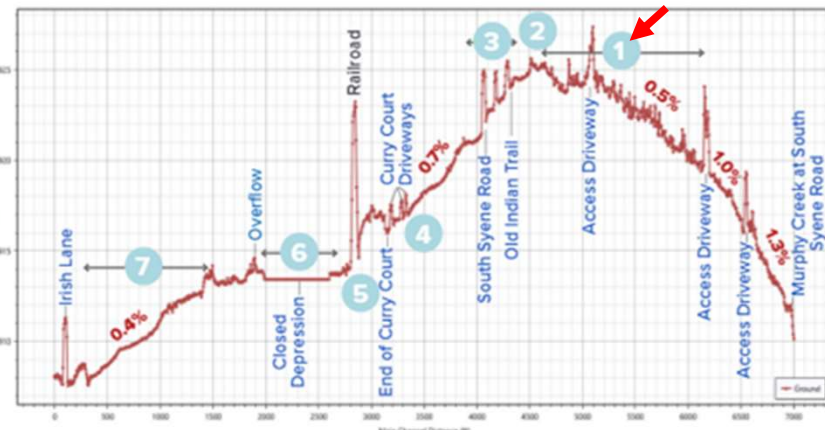


# EXISTING DRAINAGE CHALLENGES

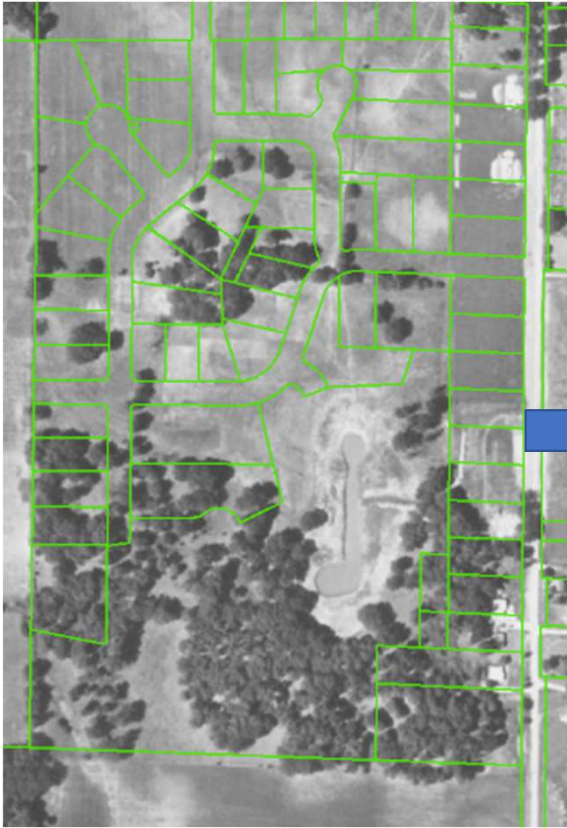


## EXISTING DRAINAGE CHALLENGES

- 1 Flat, wet ditches through Gold's Addition Park make clearing / maintenance difficult



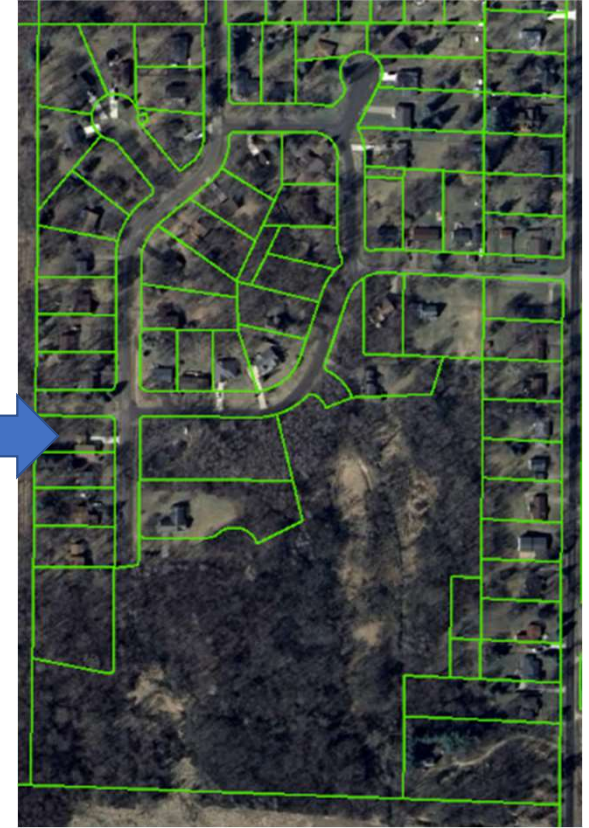
# GOLD'S ADDITON PARK



1955

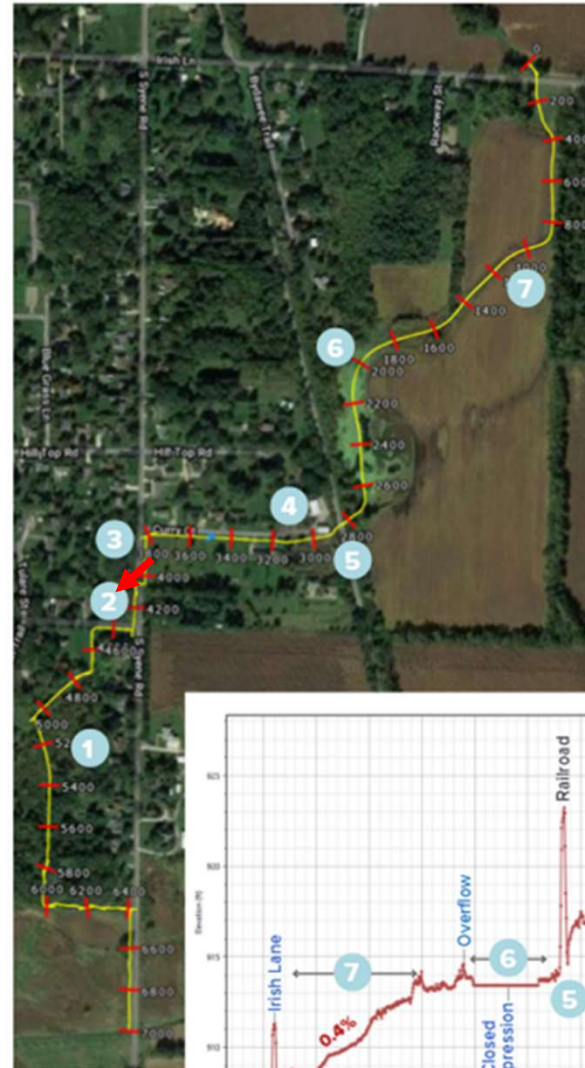


1974



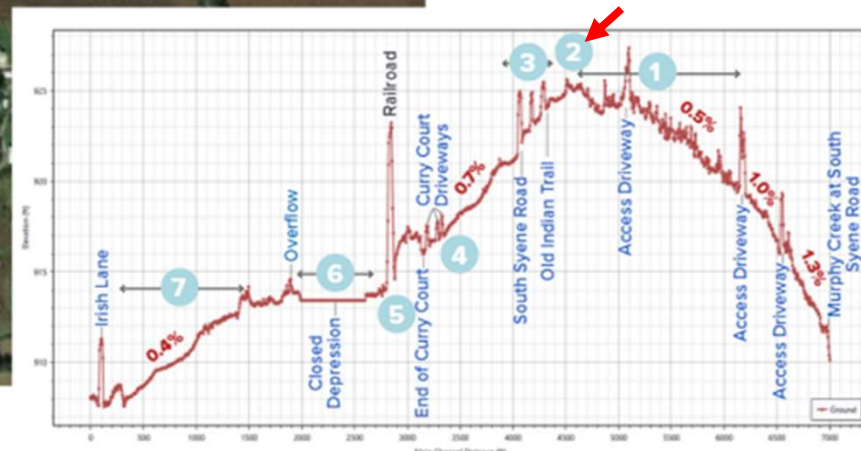
2010

# EXISTING DRAINAGE CHALLENGES

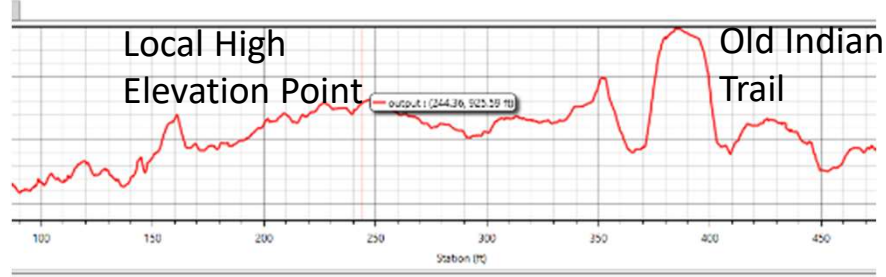
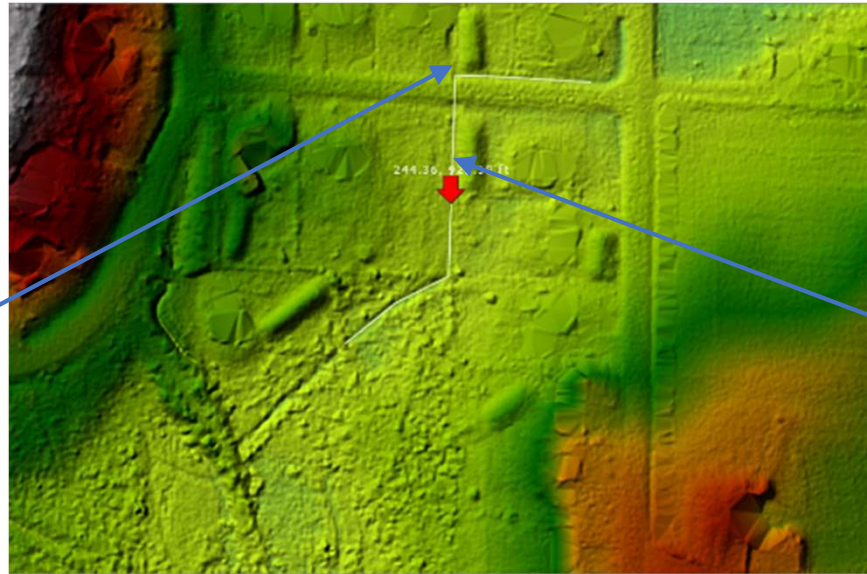


## EXISTING DRAINAGE CHALLENGES

- 1 Flat, wet ditches through Gold's Addition Park make clearing / maintenance difficult
- 2 Flat topography and mound septic systems constructed along drainages limit ability to drain water away



# OLD INDIAN TRAIL AREA

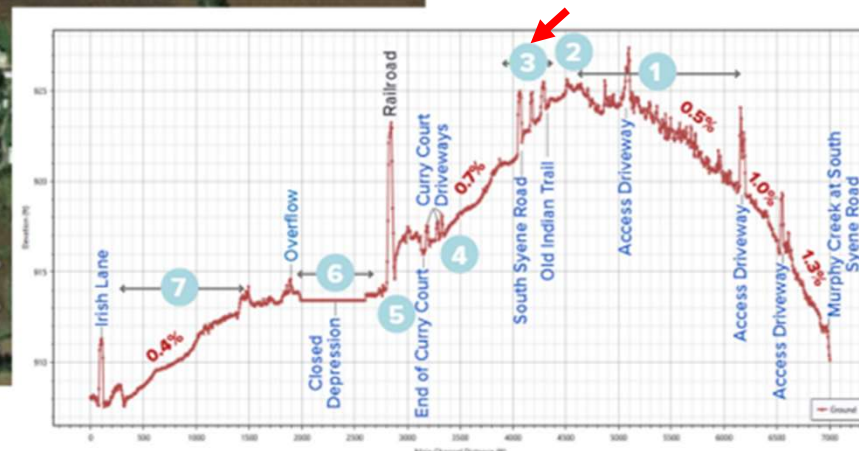


# EXISTING DRAINAGE CHALLENGES



## EXISTING DRAINAGE CHALLENGES

- 1 Flat, wet ditches through Gold's Addition Park make clearing / maintenance difficult
- 2 Flat topography and mound septic systems constructed along drainages limit ability to drain water away
- 3 **Sump pumps along South Syene Road are tied directly to the ditch system**



# S. SYENE RD. SUMP PUMPS



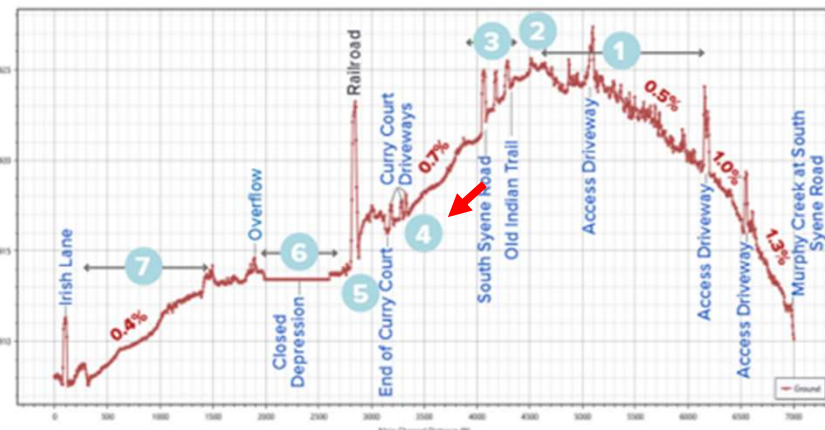
- Collects discharge from sump pumps
- Drains to the north toward Curry Court

# EXISTING DRAINAGE CHALLENGES

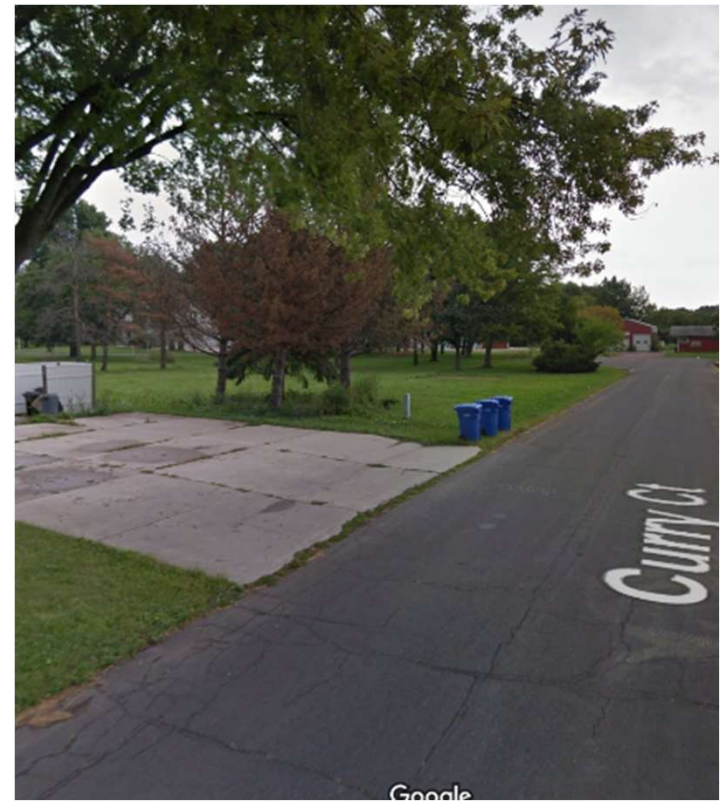


## EXISTING DRAINAGE CHALLENGES

- 1 Flat, wet ditches through Gold's Addition Park make clearing / maintenance difficult
- 2 Flat topography and mound septic systems constructed along drainages limit ability to drain water away
- 3 Sump pumps along South Syene Road are tied directly to the ditch system
- 4 **Very little grade along Curry Court prevents good drainage to the east.**



# CURRY COURT DRAINAGE



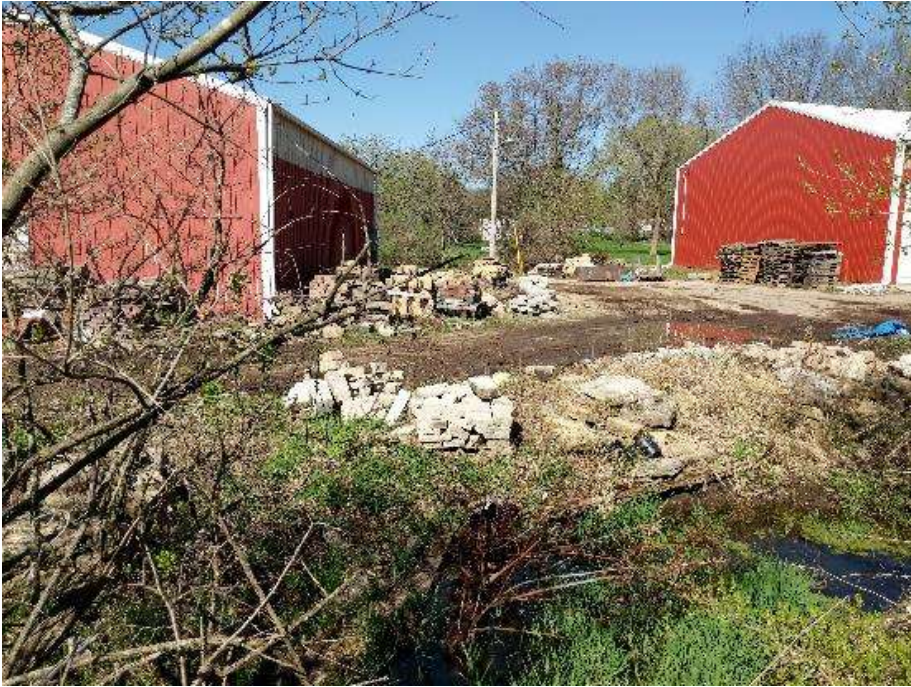
# EXISTING DRAINAGE CHALLENGES



## EXISTING DRAINAGE CHALLENGES

- 1 Flat, wet ditches through Gold's Addition Park make clearing / maintenance difficult
- 2 Flat topography and mound septic systems constructed along drainages limit ability to drain water away
- 3 Sump pumps along South Syene Road are tied directly to the ditch system
- 4 Very little grade along Curry Court prevents good drainage to the east.
- 5 Existing culvert under the railroad will be difficult to replace or add another barrel.

# PRIVATE DRAINAGE TO EXISTING RAILROAD CULVERT

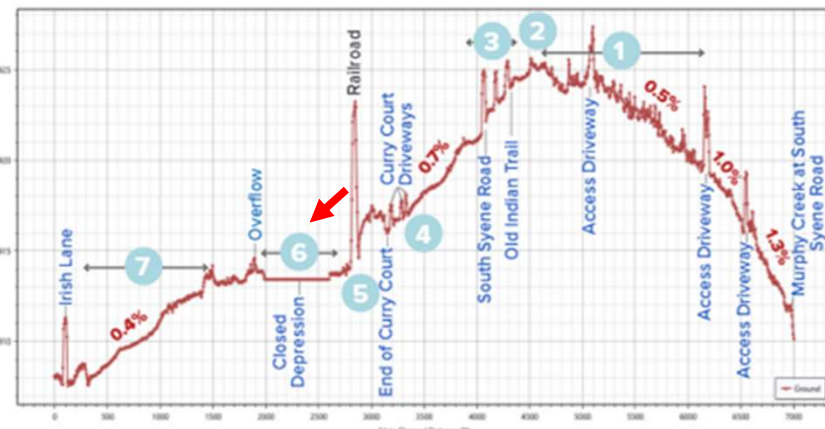


# EXISTING DRAINAGE CHALLENGES



## EXISTING DRAINAGE CHALLENGES

- 1 Flat, wet ditches through Gold's Addition Park make clearing / maintenance difficult
- 2 Flat topography and mound septic systems constructed along drainages limit ability to drain water away
- 3 Sump pumps along South Syene Road are tied directly to the ditch system
- 4 Very little grade along Curry Court prevents good drainage to the east.
- 5 Existing culvert under the railroad will be difficult to replace or add another barrel.
- 6 **If internally drained area fills up, backwater would flood across railroad**



# INTERNALLY DRAINED AREA



1968



1976



2018

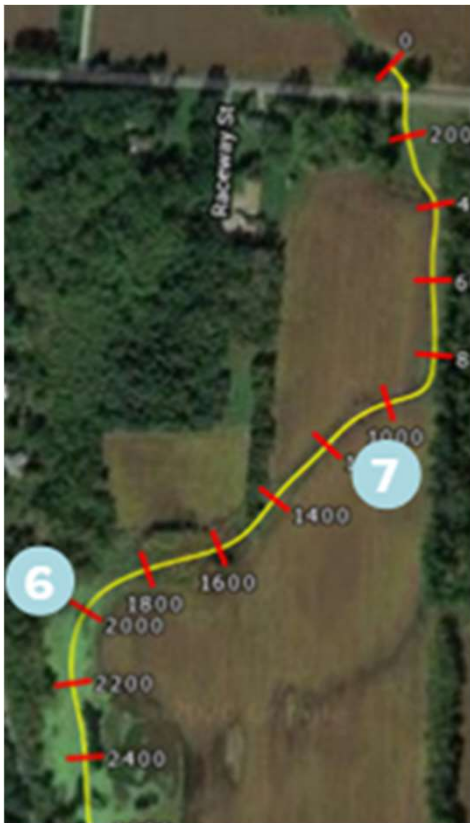
# EXISTING DRAINAGE CHALLENGES



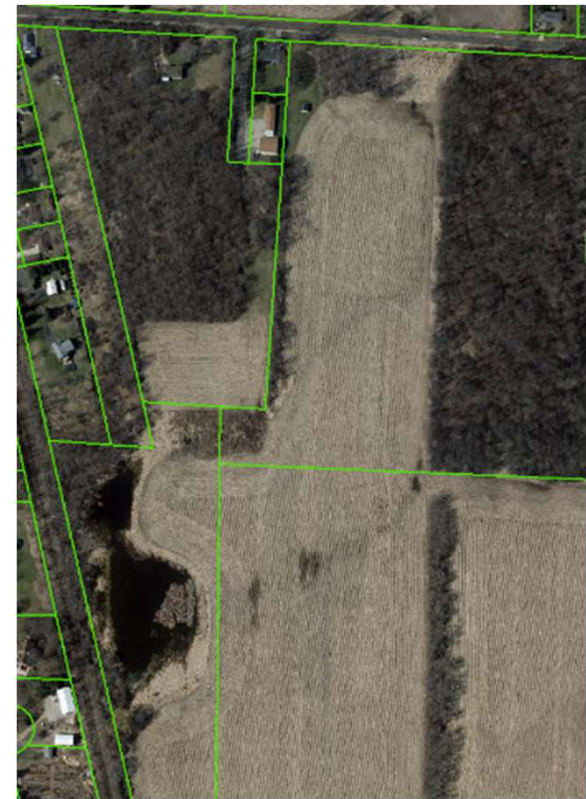
## EXISTING DRAINAGE CHALLENGES

- 1 Flat, wet ditches through Gold's Addition Park make clearing / maintenance difficult
- 2 Flat topography and mound septic systems constructed along drainages limit ability to drain water away
- 3 Sump pumps along South Syene Road are tied directly to the ditch system
- 4 Very little grade along Curry Court prevents good drainage to the east.
- 5 Existing culvert under the railroad will be difficult to replace or add another barrel.
- 6 If internally drained area fills up, backwater would flood across railroad.
- 7 **Very flat slope field has limited conveyance.**

# FLAT DRAINAGE THROUGH FIELD



1955



2010

# **Potential Stormwater Improvements**

# POTENTIAL ALTERNATIVES

We are actively seeking input from residents regarding your thoughts on problems and best solutions.

# POTENTIAL ALTERNATIVES

Alternative	Description of Alternative
1	Improve existing downstream conveyance

# ALTERNATIVE 1

Follows Existing  
Drainage Patterns

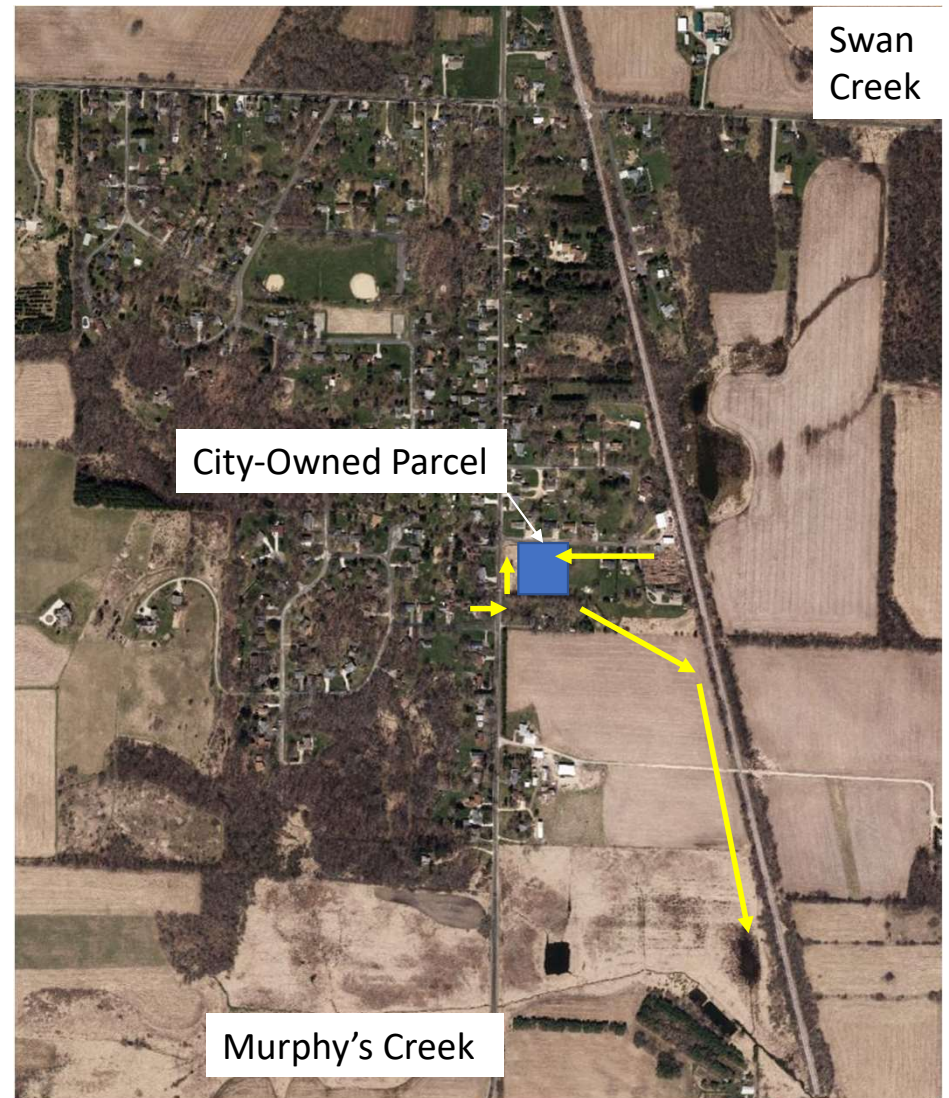


# POTENTIAL ALTERNATIVES

Alternative	Description of Alternative
1	Improve existing downstream conveyance
2	Combined gravity drainage to Murphy's Creek

# ALTERNATIVE 2

## Gravity Drainage to Murphy's Creek

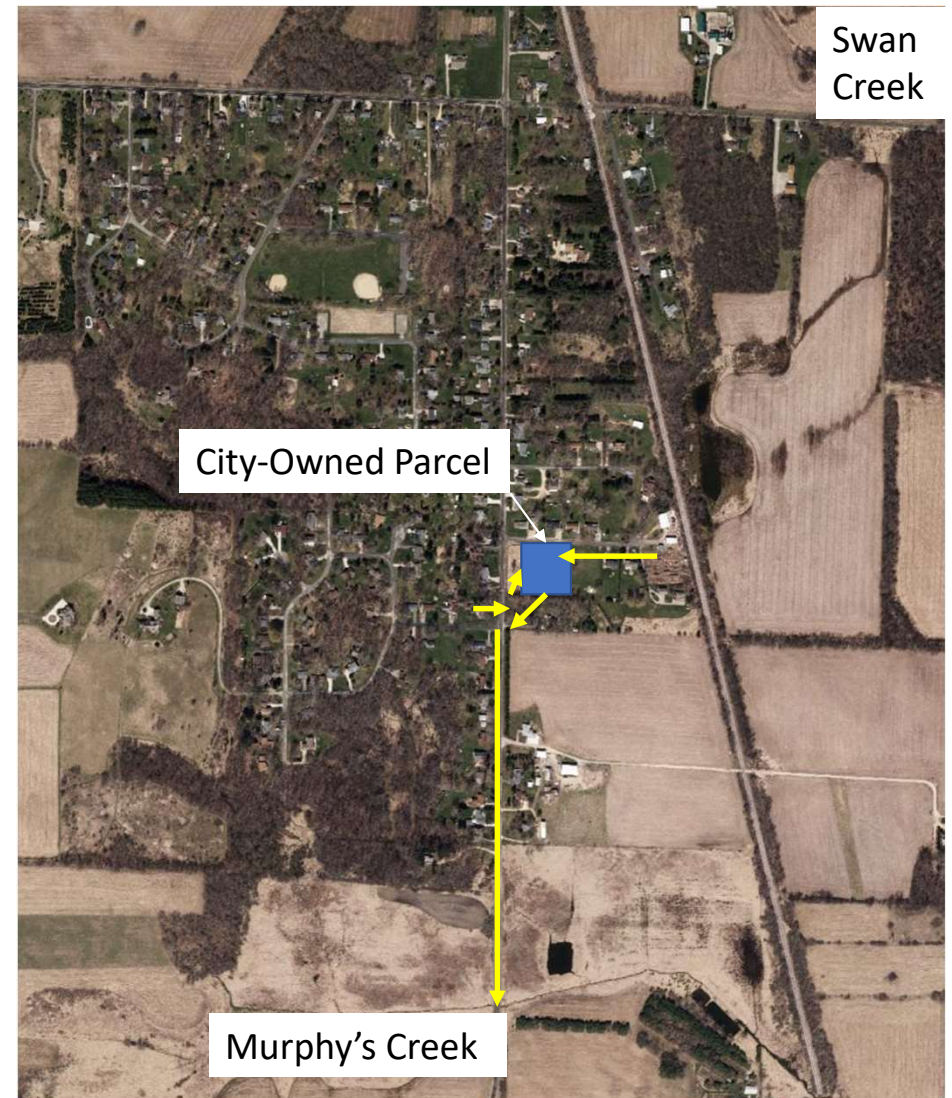


# POTENTIAL ALTERNATIVES

Alternative	Description of Alternative
1	Improve existing downstream conveyance
2	Combined gravity drainage to Murphy's Creek
3	Combined pump station drainage to Murphy's Creek

# ALTERNATIVE 3

## Pump Station to Murphy's Creek

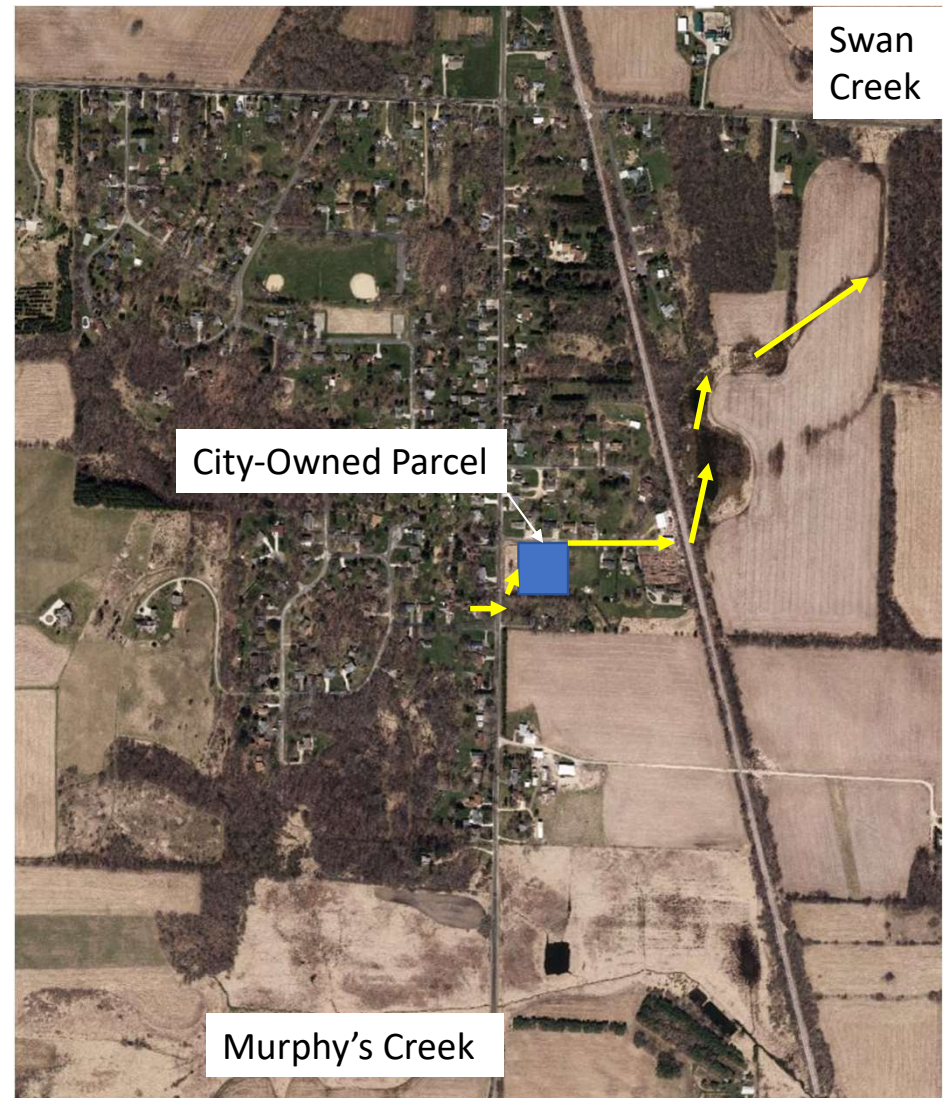


# POTENTIAL ALTERNATIVES

Alternative	Description of Alternative
1	Improve existing downstream conveyance
2	Combined gravity drainage to Murphy's Creek
3	Combined pump station drainage to Murphy's Creek
4	Combined gravity drainage to Swan Creek

# ALTERNATIVE 4

## Gravity Drainage to Swan Creek

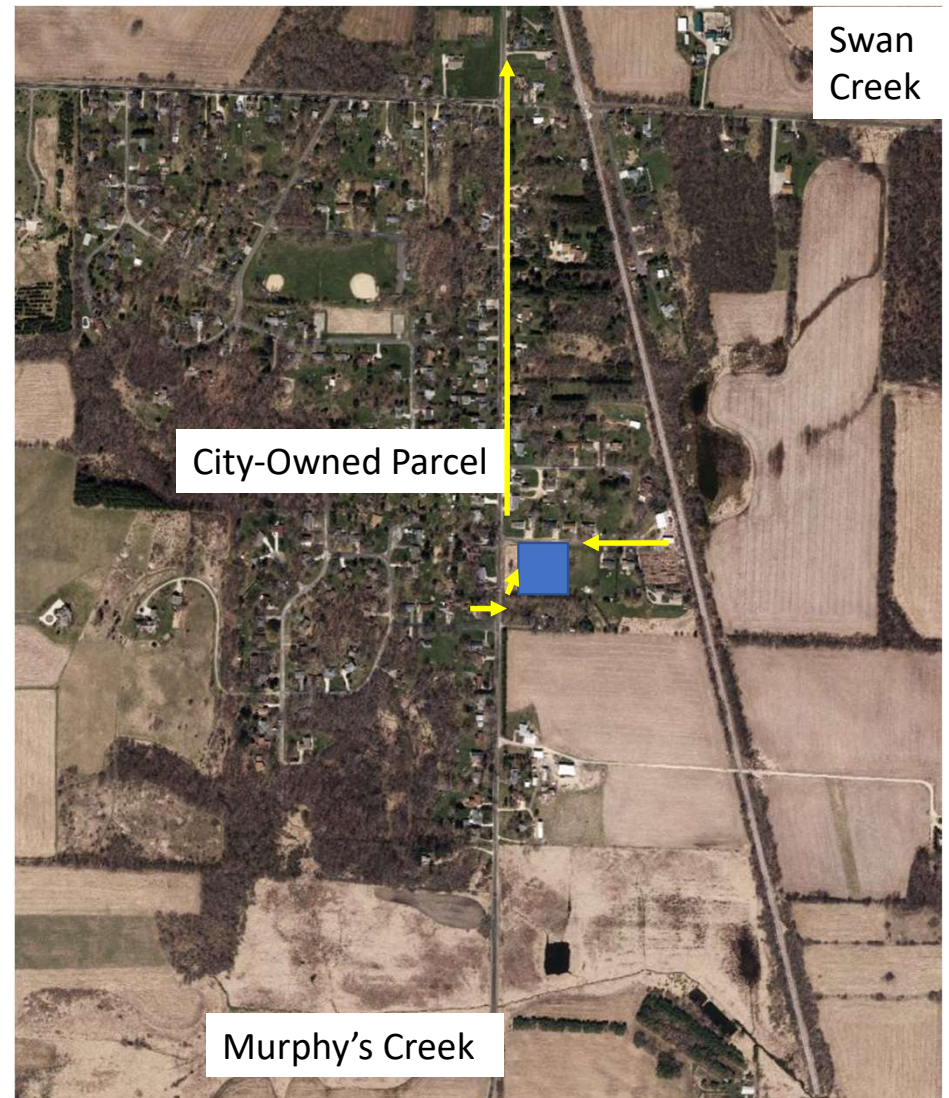


# POTENTIAL ALTERNATIVES

Alternative	Description of Alternative
1	Improve existing downstream conveyance
2	Combined gravity drainage to Murphy's Creek
3	Combined pump station drainage to Murphy's Creek
4	Combined gravity drainage to Swan Creek
5	Combined pump station drainage to Swan Creek

# ALTERNATIVE 5

## Pump Station to Swan Creek



# POTENTIAL ALTERNATIVES

Of these five, City will select three alternatives for further evaluation

Alternative	Description of Alternative
1	Improve existing downstream conveyance
2	Combined gravity drainage to Murphy's Creek
3	Combined pump station drainage to Murphy's Creek
4	Combined gravity drainage to Swan Creek
5	Combined pump station drainage to Swan Creek

# CONSTRAINTS ON ALTERNATIVE SELECTION

- No silver bullet
  - Each alternative has benefits and drawbacks
- Might be dealbreakers
  - Permission from private property
  - Permitting

# OTHER CONSIDERATIONS

- Sump pump collection system
- Drain tile under ditches
- Urban roadway section with storm sewer



# Next Steps

# NEXT STEPS

- Complete existing conditions analysis
- Compile Survey 1-2-3 results and resident comments
- Meet with Wisconsin DNR/Dane County to review potential permitting requirements
- Analysis of Three Alternative
- Public Information Meeting #2
- Alternative selection for recommendation to Council

# Questions?

<http://www.fitchburgwi.gov/2667/Curry-Court-and-Old-Indian-Trail-Study>



# Contact

**Claudia Guy, PE**  
**City of Fitchburg**  
**[Claudia.Guy@Fitchburgwi.gov](mailto:Claudia.Guy@Fitchburgwi.gov)**

