

**Option 4 – DRAFT 10-6-21**

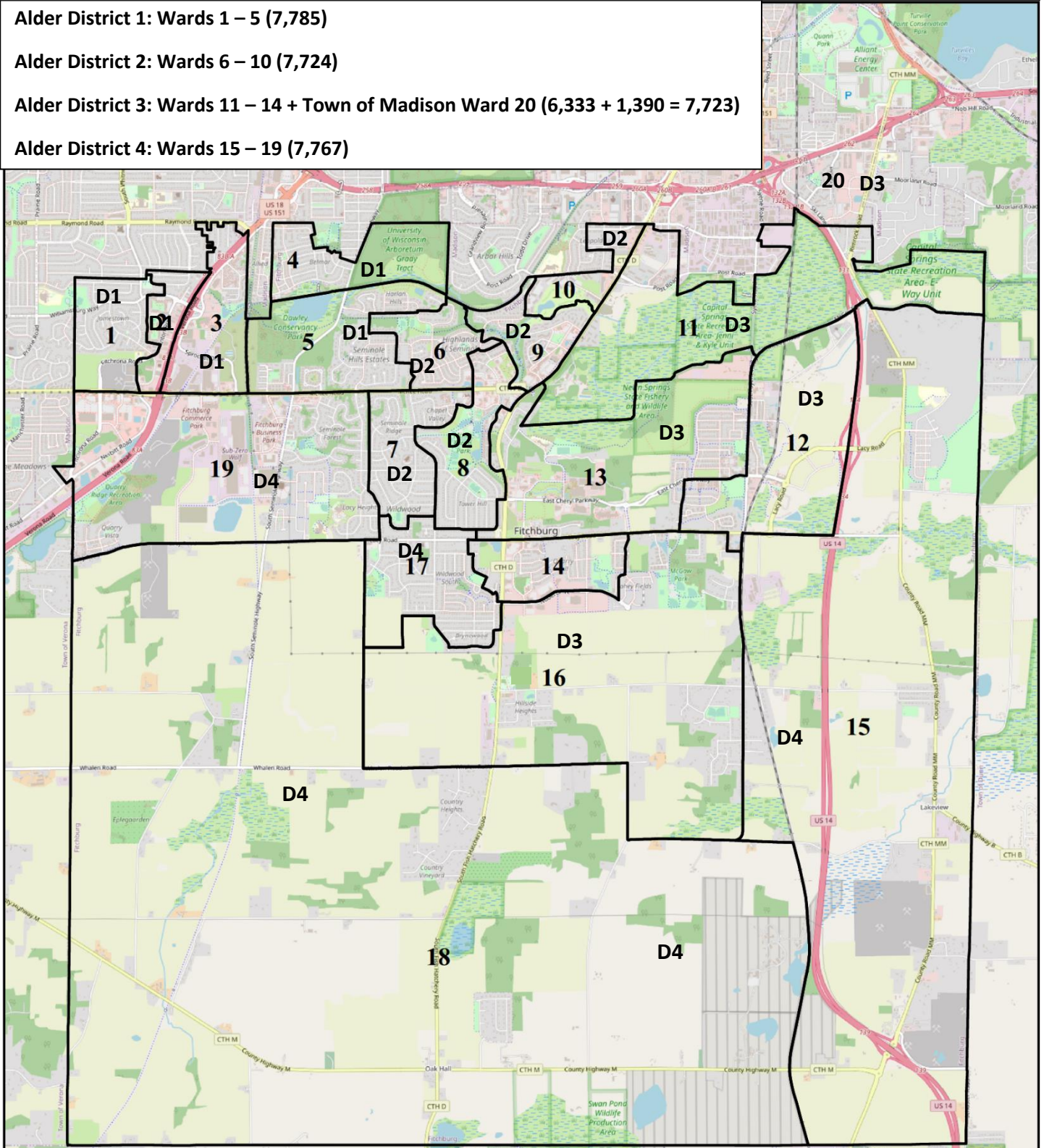
**City of Fitchburg Population: 29,609, Town of Madison Population to be annexed in 2022: 1,390  
Ideal Equal Population Distribution Per Alder District, to include Town of Madison Population = 7,750**

**Alder District 1: Wards 1 – 5 (7,785)**

**Alder District 2: Wards 6 – 10 (7,724)**

**Alder District 3: Wards 11 – 14 + Town of Madison Ward 20 (6,333 + 1,390 = 7,723)**

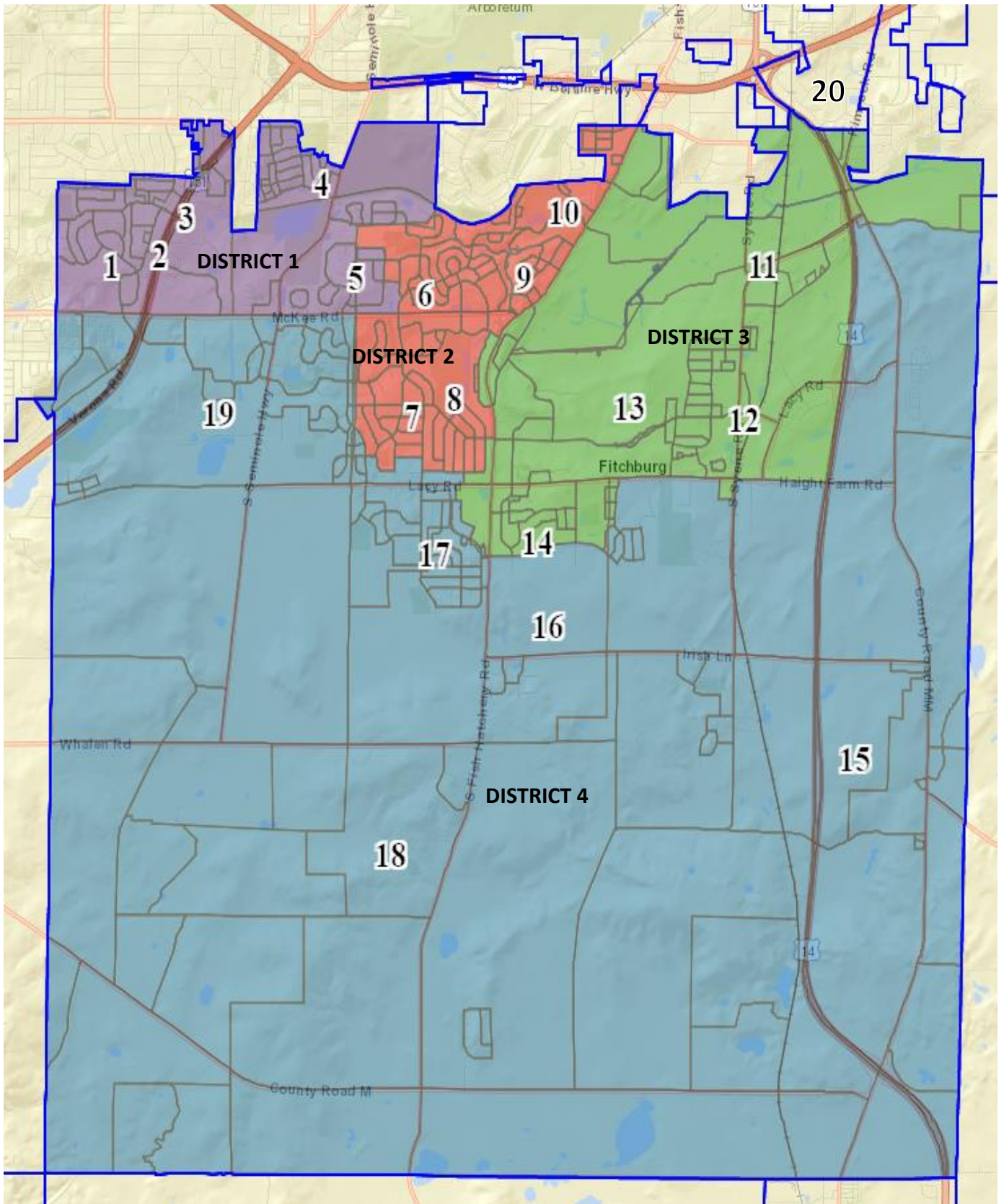
**Alder District 4: Wards 15 – 19 (7,767)**



**\*This option is consistent with County Supervisory Districts Option A, and with County Options C and G subject to a minor change to Ward 11 and 15 as identified herein.**

Map generated from WSL LTSB's WISE-LR software.  
U.S. Census Bureau 2020 TIGER Block data. OpenStreetMap  
Map Created: 10/6/2021 2:19 PM

Option 4 – DRAFT 10-6-2021



2020

Ward	Population	Pop 18+	White	Black	Hispanic	Asian	Am Indian	Pac Islr	Other	Multi-Other
1	1,945	1,322	946	437	350	137	23	3	27	22
2	1,346	1,066	520	267	430	100	11	4	12	2
3	1,182	836	293	139	680	52	9	1	3	5
4	2,014	1,402	605	313	883	161	14	0	22	16
5	1,298	969	984	67	79	124	8	0	31	5
<b>District 1</b>	<b>7,785</b>	<b>5,595</b>	<b>3,348</b>	<b>1,223</b>	<b>2,422</b>	<b>574</b>	<b>65</b>	<b>8</b>	<b>95</b>	<b>50</b>
6	959	702	682	32	82	129	15	0	17	2
7	1,376	1,197	1,137	76	54	84	7	0	11	7
8	1,374	1,149	1,080	73	111	85	1	0	20	4
9	1,983	1,527	936	421	505	76	22	0	11	12
10	2,032	1,443	460	835	653	50	8	0	13	13
<b>District 2</b>	<b>7,724</b>	<b>6,018</b>	<b>4,295</b>	<b>1,437</b>	<b>1,405</b>	<b>424</b>	<b>53</b>	<b>0</b>	<b>72</b>	<b>38</b>
11	1,704	1,450	932	225	403	107	8	1	13	15
12	1,870	1,708	1,562	70	93	121	11	0	8	5
13	1,576	1,311	1,314	61	76	97	16	0	9	3
14	1,183	973	978	31	80	62	10	5	10	7
20	1,390	1,068	456	368	494	39	4	2	4	23
<b>District 3</b>	<b>7,723</b>	<b>6,510</b>	<b>5,242</b>	<b>755</b>	<b>1,146</b>	<b>426</b>	<b>49</b>	<b>8</b>	<b>44</b>	<b>53</b>
15	769	603	616	29	82	26	7	1	4	4
16	1,410	1,228	1,204	45	78	63	1	0	15	4
17	1,918	1,482	1,575	68	131	99	16	2	21	6
18	1,642	1,508	1,108	340	99	42	37	1	14	1
19	2,028	1,524	1,695	52	66	164	11	0	37	3
<b>District 4</b>	<b>7,767</b>	<b>6,345</b>	<b>6,198</b>	<b>534</b>	<b>456</b>	<b>394</b>	<b>72</b>	<b>4</b>	<b>91</b>	<b>18</b>

2010

Ward	Population	Pop 18+	White	Black	Hispanic	Asian	Am Indian	Pac Islr	Other	Multi-Other
District 1	6,485		3,058	996	1,923	427	25	6	14	36
District 2	6,318		5,212	317	313	439	14	1	5	17
District 3	6,307		3,094	1,028	1,846	270	25	4	4	36
District 4	6,150		5,091	511	259	217	46	3	5	18