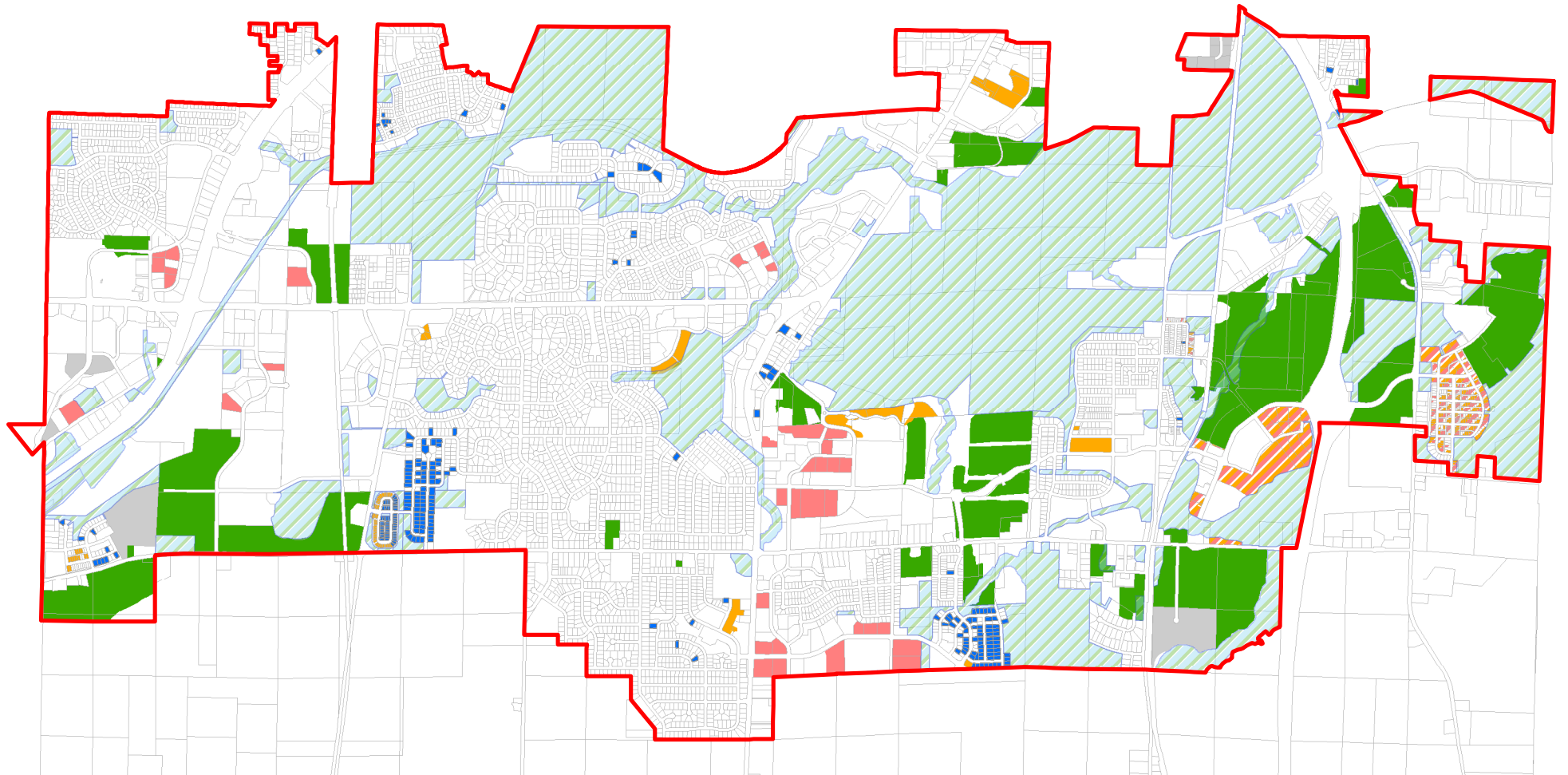
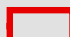



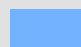

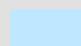



Developable Land within the Urban Service Area



Legend

-  Urban Service Area
-  Environmental Corridors (undevelopable)

Developable Land Categories

- | | |
|--|---|
|  SF Developer/Builder |  Commercial / Industrial |
|  SF Own Adjacent Lot |  Smart Code |
|  SF Privately Owned |  Unplatted / Agricultural Zone |
|  Multi / Condo Residential |  Redevelopment / Infill |

June 1, 2020	
Land Use	Acres
Single-Family Lots - 261 lots	54.6
Developer/builder - 236 lots	46.1
Privately-owned - 8 lots	2.8
Own adjacent lot - 17 lots	5.7
Multi / Condo Residential	43.1
9 Single-family pads	8.1
68 Duplex pads	7.5
2 Four unit pads	0.7
4 Sixteen unit pads	3.4
1 Eighteen unit pad	1.1
13 Multi-family lots	22.3
Commercial / Industrial - 38 lots	86.7
Redevelopment / Infill	74.4
Vacant / Unplatted	743.5
Smart Code - 256 lots	90.5
Total	1,092.8



Sources:
City of Fitchburg Planning/Zoning
Dane County LIO

June 1, 2020

