



City of Fitchburg
Parks & Public Works Departments
City Hall, 5520 Lacy Road, Fitchburg, Wisconsin 53711
Ph: 608.270.4260 | Fx: 608.270.4275 | fitchburgwi.gov

November 25, 2014

Subject: Tower Hill Greenway Restoration Plan

Dear Tower Hill Greenway Neighbor,

This letter is being sent to give an update on the status of the Tower Hill Greenway Restoration. As many of you are aware, during the spring and summer of 2014, dead and dying trees as well as invasive understory brush were removed from the greenway. Recently, the Common Council approved the 2015 Budget, which includes allocating approximately \$15k towards continued restoration of the greenway. Staff has begun drafting a proposed planting and restoration plan (see back side) and would love to get your input.

We've reserved the "Stoner Prairie Dining Room" in the lower level of the Fitchburg Community Center (5510 Lacy Road) for **Thursday, December 11, 2014** for an Open House with the following tentative timeline:

- 6:30 – 7:00pm** - Map(s) and Staff available for questions, comments, feedback
- 7:00 – 7:15pm** - Brief Presentation by Staff on Proposed Planting and Restoration Plan
- 7:15 – 8:00pm** - Map(s) and Staff available for questions, comments, feedback

Key elements of the plan include continued vegetation management throughout the Tower Hill Greenway Unit, planting of native trees and shrubs within the wooded area, and removal of any encroachments from adjacent neighbors (landscaping, gardens, and piles of brush, yard waste, and pet waste).

Staff will update the Restoration Plan based on neighborhood feedback before and during the Open House and post the revised plan along with implementation timeline on Fitchburg's web site at: www.fitchburgwi.gov/2155/Tower-Hill-Greenway. Wooden stakes will be placed in Spring 2015 to show the proposed tree and shrub locations and a walk-through will be coordinated afterwards. If you are interested in attending the walk-through please let us know.

If you have any questions or comments that you'd like to provide, please feel free to contact either of us at your convenience. Thank You!

Sincerely,

City of Fitchburg

Ed Bartell
City Forester & Naturalist
ed.bartell@fitchburgwi.gov
608-270-4289

Rick Eilertson, PE
Environmental Engineer
rick.eilertson@fitchburgwi.gov
608-270-4264

ec: Scott Endl, Parks Director
Cory Horton, Director of Public Works/City Engineer
Tony Roach, City Administrator
District 2 Alders

NATIVE TREES



White spruce
Picea glauca



Northern white cedar
Thuja occidentalis

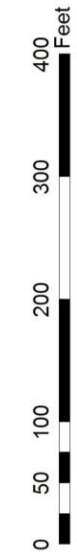


Eastern red cedar
Juniperus virginiana

THE CITY OF
Fitchburg
PARKS

TOWER HILL GREENWAY RESTORATION PROJECT

THE CITY OF
Fitchburg
PUBLIC WORKS



CREATED BY: PARKS AND FORESTRY DEPARTMENT 11/20/2014

NATIVE SHRUBS



Highbush cranberry
Viburnum trilobum



Pagoda dogwood
Cornus alternifolia



Eastern wahoo
Euonymus atropurpurea



Common witchhazel
Hamamelis virginiana



Gray dogwood
Cornus racemosa