

Syene Road Reconstruction Project



February 25, 2021



Project Team

- Andrew McFadden
 - Fitchburg Senior Transportation Engineer
- Samantha Herheim
 - KL Engineering, Inc, Consultant Project Manager
- Kevin Wehner
 - KL Engineering, Inc, Consultant Traffic Engineer

Presentation Agenda

- Public Engagement Goals and Process
- Project Location
- Project Background
- Need for Project
- Improvement Concepts
- Project Schedule
- How to Get Involved
- Contact Information



Public Engagement Goals and Process

- Process
 - First of 2 public meetings
 - This meeting is data gathering - design is at concept level
 - Second meeting late spring 2021 – preliminary design
- Goals
 - Discuss cross section concepts
 - Discuss intersection concepts
 - Feedback on extent of lighting on corridor
 - Feedback on anything else!

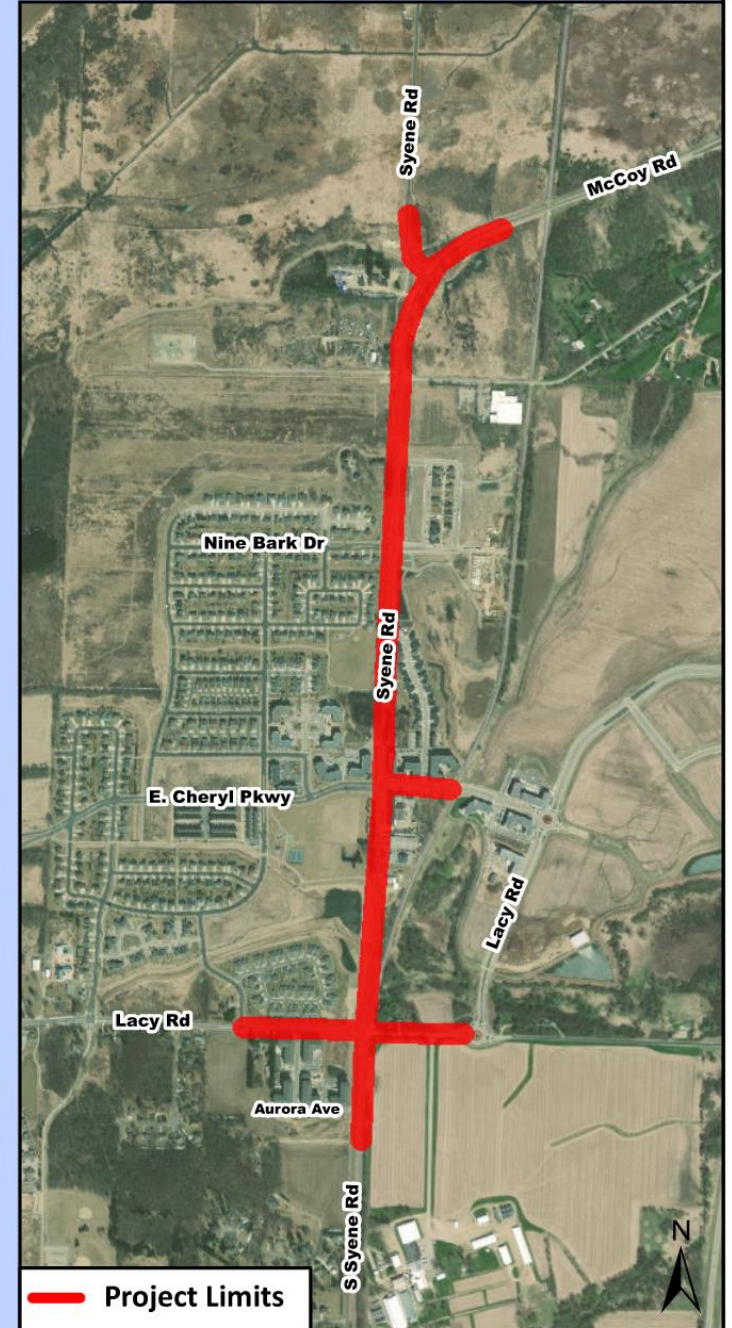
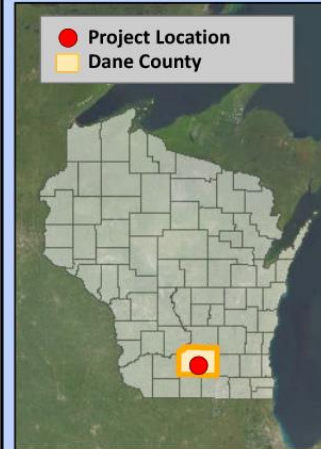


Project Location

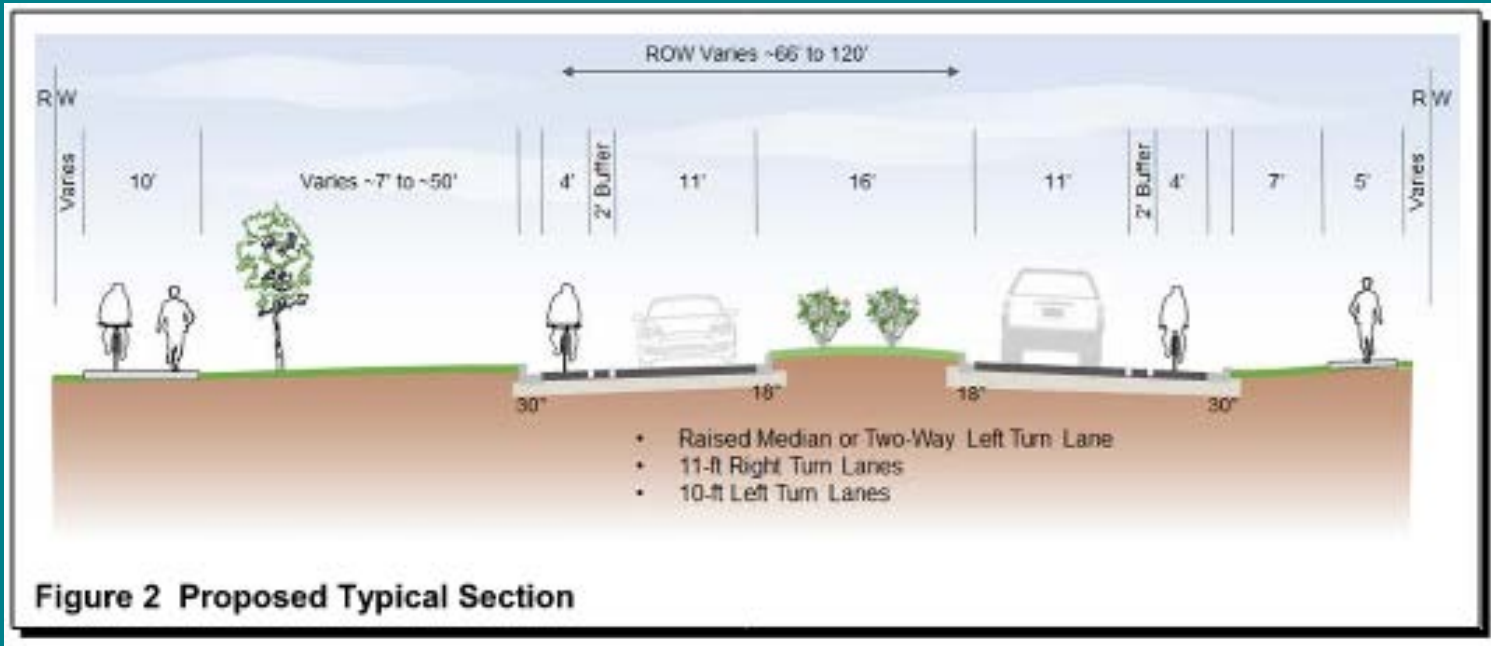
Syene Road McCoy Road to Aurora Avenue

Syene Road Reconstruction - Project Location Map

Syene Road Reconstruction
Aurora Avenue to McCoy Road
City of Fitchburg



Project Background



- Recent development has changed the character of the corridor
- Roadway not updated with neighborhood developments
- City hired a consultant for a study project to determine how to reconstruct Syene Road to better accommodate the mixed-use development in the area
- Study was completed in 2019

Need for Project

- Rural corridor transitioning to mixed-use
- Pavement condition
- Intersection functionality



Improvement Concepts

- Work complete
 - Wetland delineation
 - Topo survey
 - Some underground utility locates
 - Traffic study
 - Development of concepts for design

Improvement Concepts

- Roadway cross sections
- Intersection improvements of various levels
- Lighting
- Stormwater improvements
- Sanitary and water main in select locations



Improvement Concepts

- Roadway Cross Sections

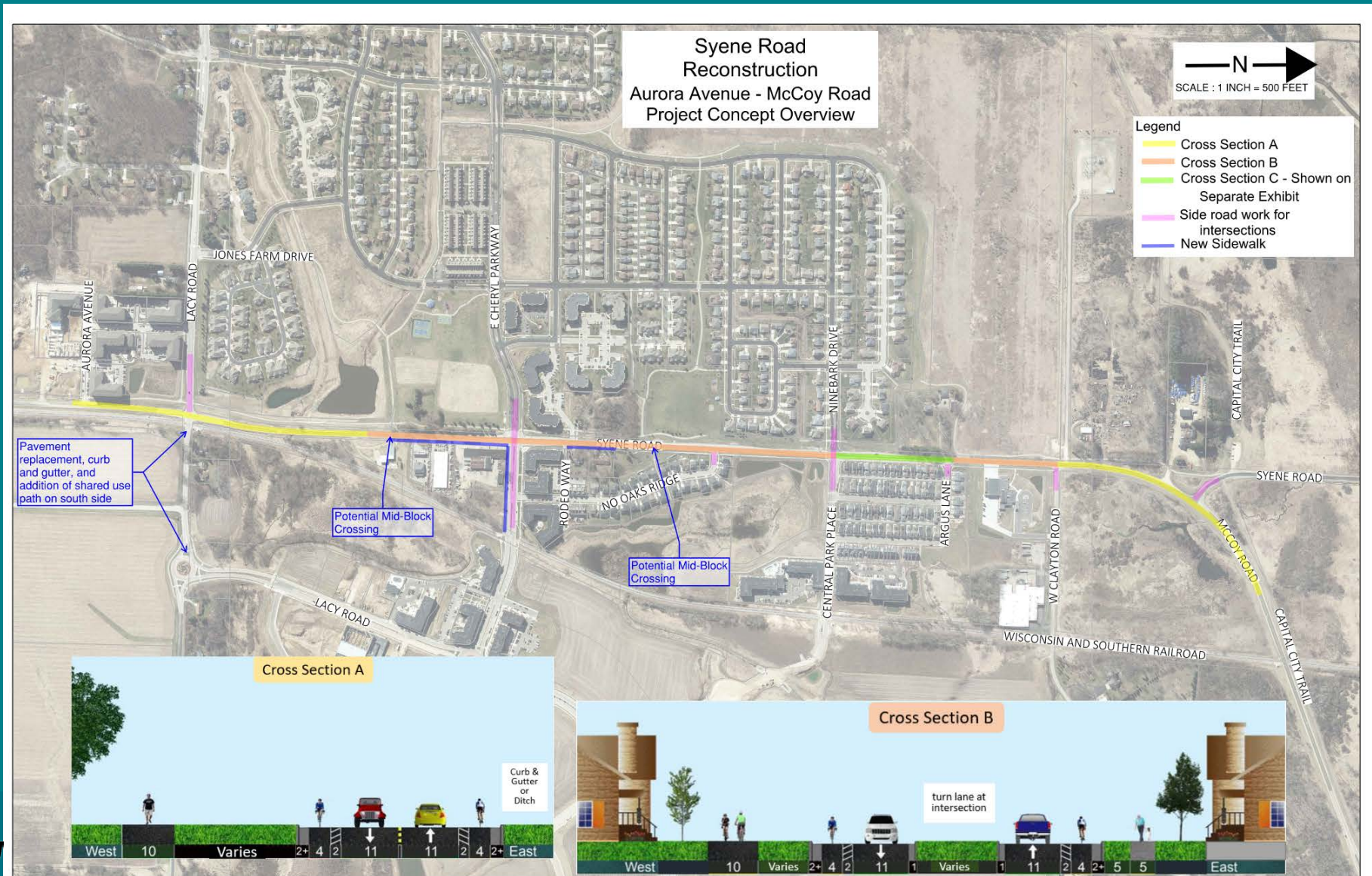
- All locations:

- 11' travel lanes (1 in each direction)
 - 6' on-street bike lanes (4' lane with 2' painted buffer – 1 in each direction)
 - Shared use path west side

- Some locations:

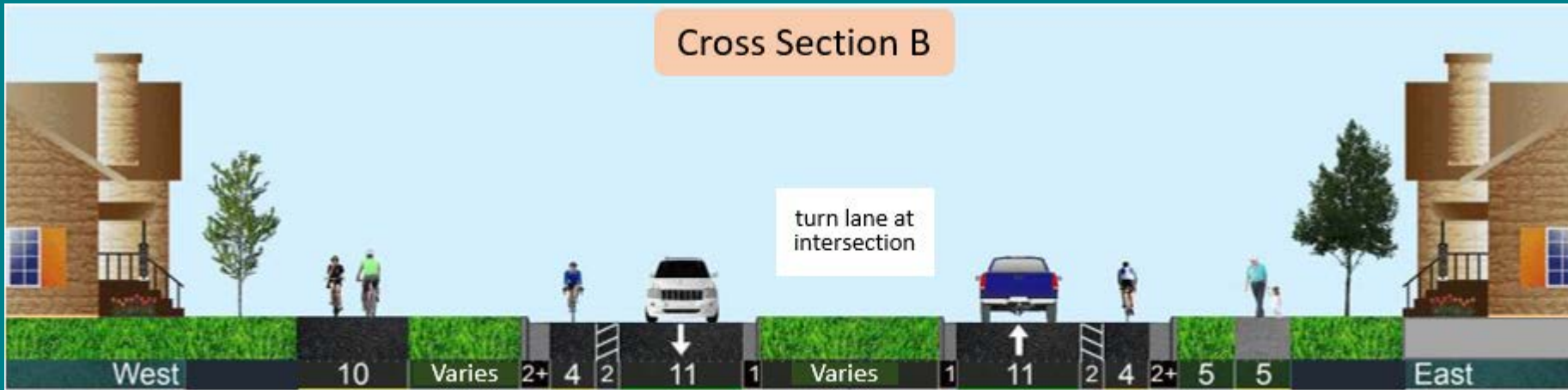
- Median
 - Sidewalk east side
 - Parking

Improvement Concepts



Improvement Concepts

- Roadway Cross Section B

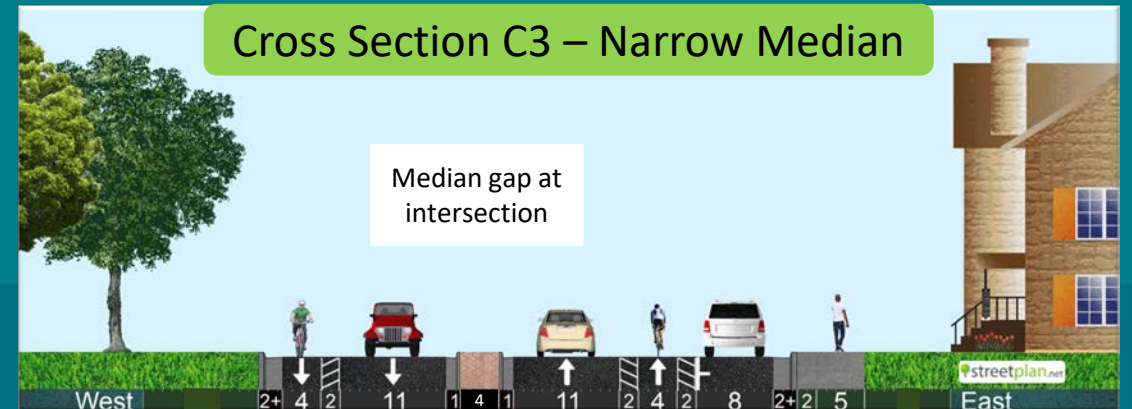
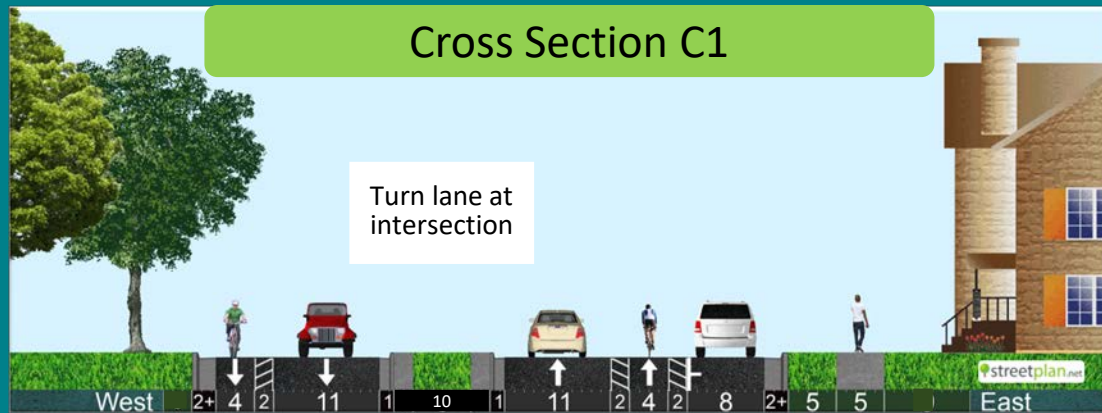


- South of East Cheryl Pkwy to Ninebark Drive/Central Park Place
- Argus Lane to West Clayton Road



Improvement Concepts

- Roadway Cross Section C
 - Ninebark to Argus: Currently Evaluating Alternatives based on Impacts



Improvement Concepts

- Lacy Road: Railroad Crossing to Haight Farm Road roundabout
 - Pavement replacement
 - Curb and gutter
 - Shared use path on south side
- All intersecting roads
 - Reconstruction to the limits needed for intersection improvements and/or sanitary sewer and watermain connections
 - Addition of sidewalk on south side E Cheryl Pkwy

Intersection Concepts

- Lacy Road
 - Currently all way stop
 - Intersection improvements will be guided by railroad crossing

Level of Service by Movement - Syene Rd & Lacy Rd - Base Year Volumes

Alternative	Peak	Movement												Intersection
		Eastbound			Westbound			Northbound			Southbound			
		L	T	R	L	T	R	L	T	R	L	T	R	
Existing Conditions	AM	B	B	B	A	A	A	A	A	A	A	A	A	A
	PM	A	A	A	B	B	B	A	A	A	B	B	A	B
Traffic Signal	AM	A	A	A	A	A	A	A	A	A	A	A	A	A
	PM	A	A	A	A	A	A	A	A	A	A	A	A	A

Level of Service by Movement - Syene Rd & Lacy Rd - Design Year Volumes

Alternative	Peak	Movement												Intersection
		Eastbound			Westbound			Northbound			Southbound			
		L	T	R	L	T	R	L	T	R	L	T	R	
Existing Conditions	AM	B	B	B	B	B	B	B	B	B	B	B	A	B
	PM	C	C	C	B	B	B	B	B	B	B	B	B	B
Traffic Signal	AM	A	A	A	A	A	A	A	A	A	A	A	A	A
	PM	A	A	A	A	A	A	A	A	A	A	A	A	A

Intersection Concepts

- East Cheryl Parkway
 - Currently all way stop

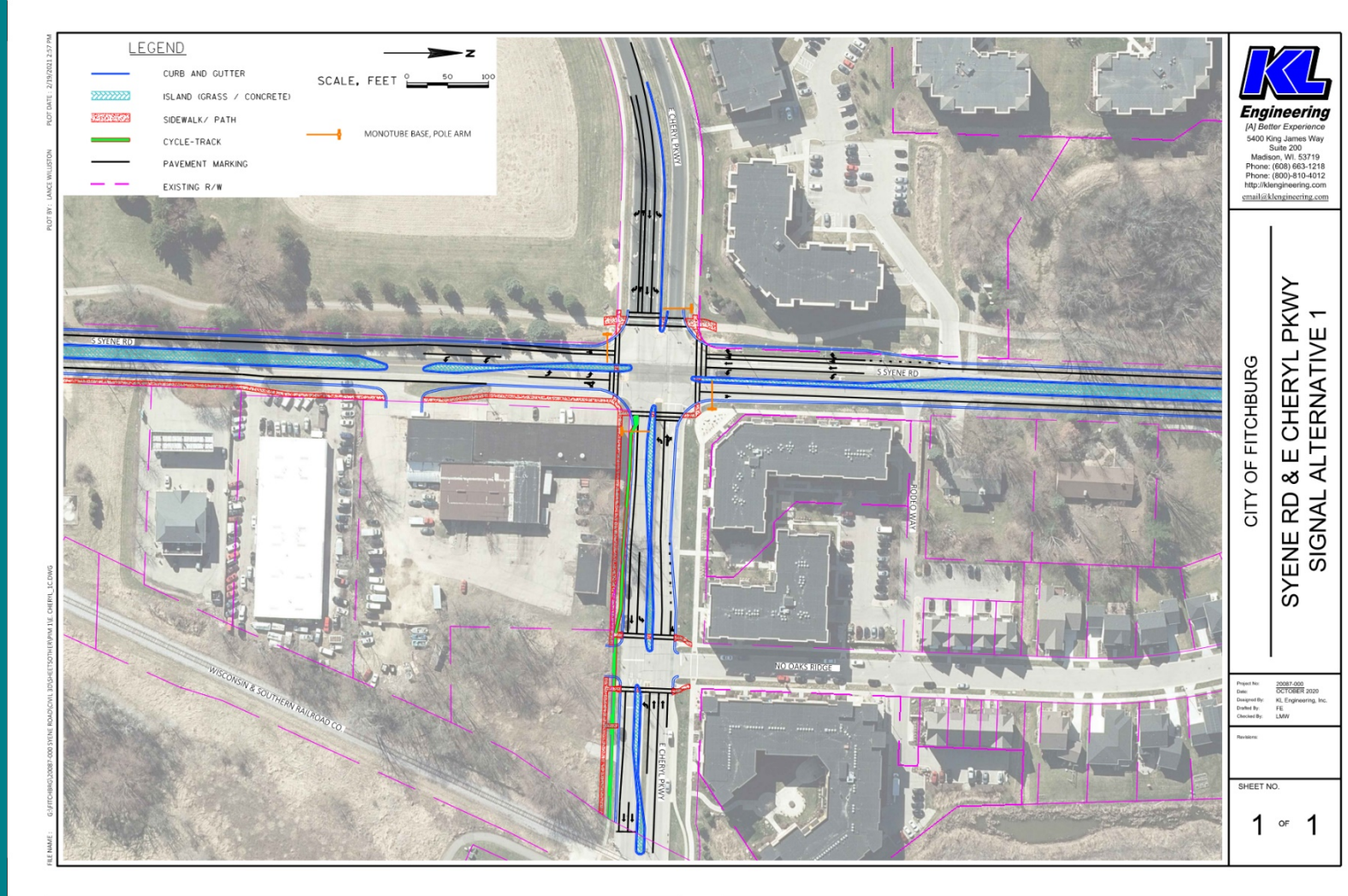
Level of Service by Movement - Syene Rd & E Cheryl Pkwy - Base Year Volumes

Alternative	Peak	Movement												Intersection
		Eastbound			Westbound			Northbound			Southbound			
		L	T	R	L	T	R	L	T	R	L	T	R	
Existing Conditions	AM	B	B	B	C	C	B	C	C	C	C	C	B	C
	PM	B	C	B	B	B	B	B	B	B	E	E	B	C
Traffic Signal	AM	B	A	A	A	A	A	A	A	A	A	A	A	A
	PM	A	B	A	B	A	A	B	A	A	A	A	A	A
Roundabout	AM	A	A	A	A	A	A	A	A	A	A	A	A	A
	PM	B	B	B	A	A	A	A	A	A	B	B	B	A

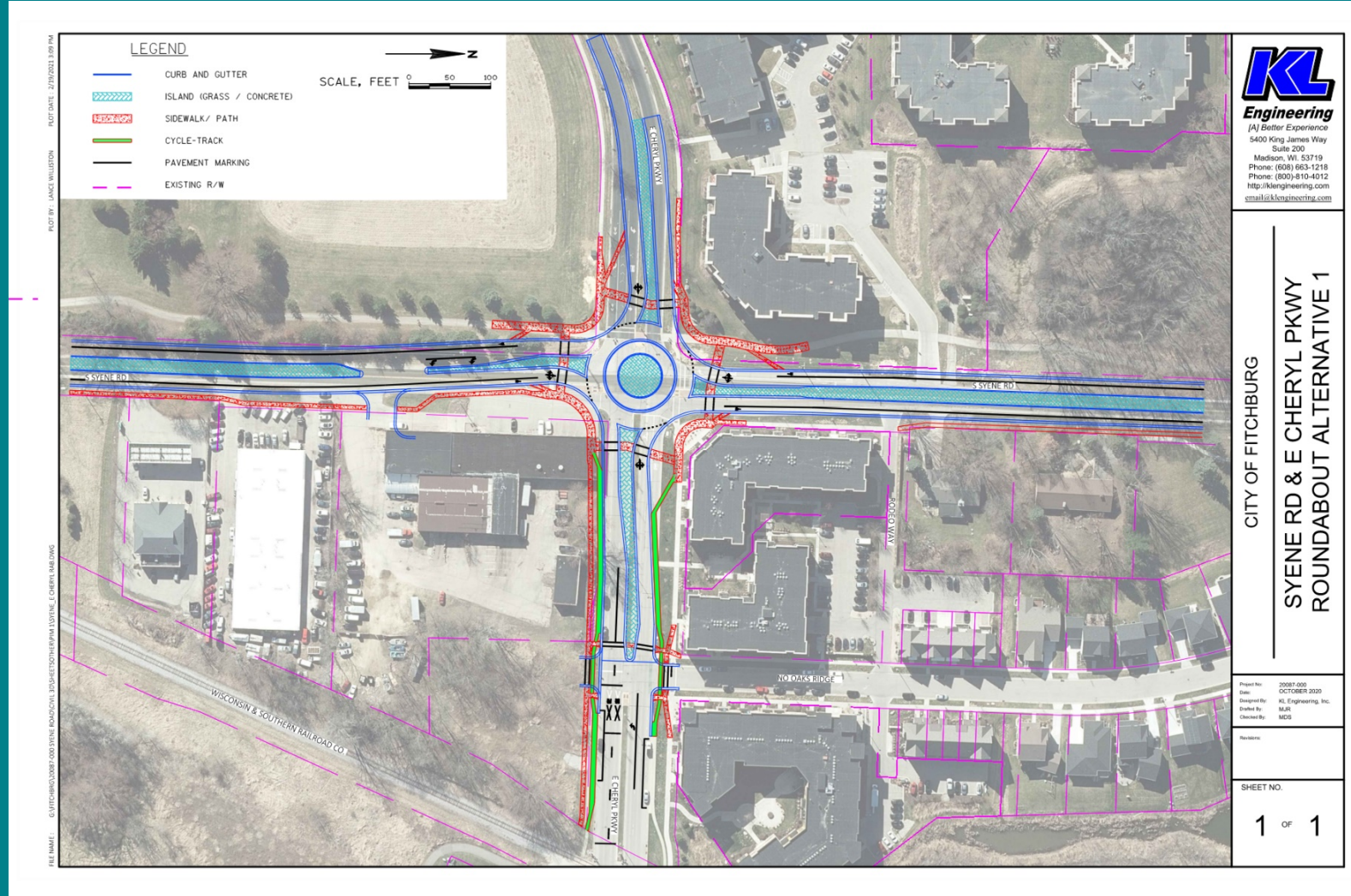
Level of Service by Movement - Syene Rd & E Cheryl Pkwy - Design Year Volumes

Alternative	Peak	Movement												Intersection
		Eastbound			Westbound			Northbound			Southbound			
		L	T	R	L	T	R	L	T	R	L	T	R	
Existing Conditions	AM	C	C	B	E	E	C	F	F	F	D	D	D	E
	PM	C	E	B	C	C	B	C	C	C	F	F	C	F
Traffic Signal	AM	B	A	A	A	A	A	B	B	A	B	A	B	B
	PM	B	B	B	B	B	A	B	A	A	A	B	A	B
Roundabout	AM	A	A	A	B	B	B	A	A	A	B	B	B	B
	PM	C	C	C	A	A	A	A	A	A	C	C	C	C

Intersection Concepts East Cheryl Pkwy

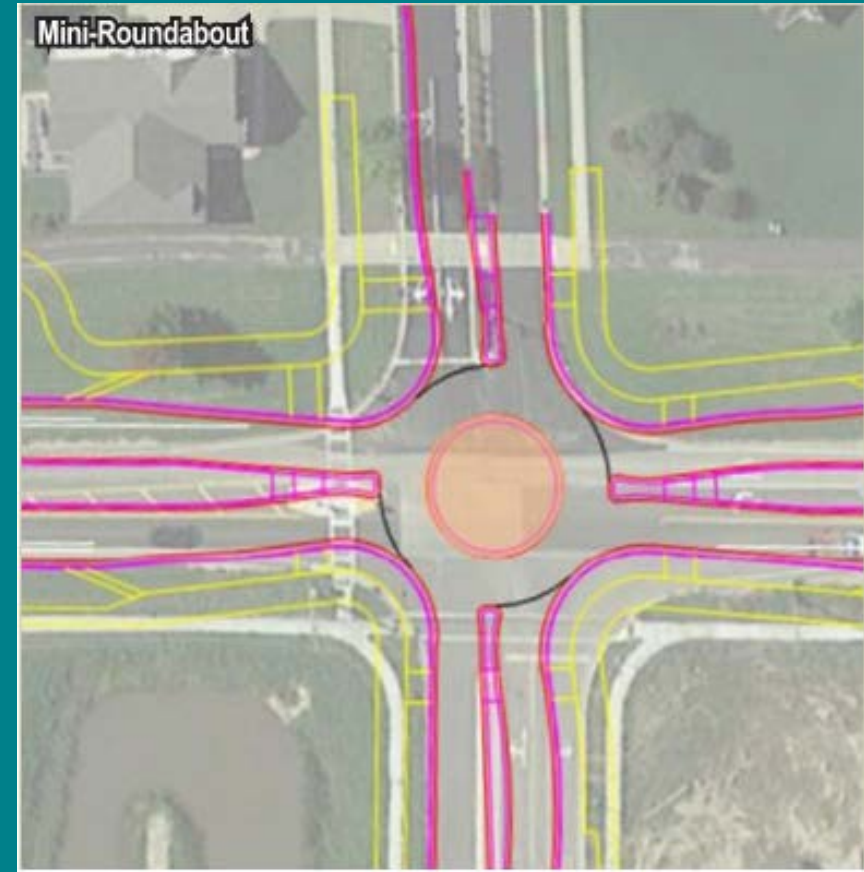


Intersection Concepts East Cheryl Pkwy



Intersection Concepts

- Ninebark Drive/Central Park Place
 - Currently stop signs on Ninebark Drive and Central Park Place



Level of Service by Movement - Syene Rd & Central Park PL - Base Year Volumes

Level of Service by Movement - Syene Rd & Central Park PL - Design Year Volumes

Alternative	Peak	Movement												Intersection
		Eastbound			Westbound			Northbound			Southbound			
		L	T	R	L	T	R	L	T	R	L	T	R	
Existing Conditions	AM	D	D	B	C	C	B	A	A	A	A	-	-	-
	PM	C	C	B	C	C	A	A	A	A	A	-	-	-
Roundabout	AM	A	A	A	A	A	A	A	A	A	A	A	A	A
	PM	A	A	A	A	A	A	A	A	A	A	A	A	A

Alternative	Peak	Movement												Intersection
		Eastbound			Westbound			Northbound			Southbound			
		L	T	R	L	T	R	L	T	R	L	T	R	
Existing Conditions	AM	F	F	B	D	D	B	A	A	A	A	-	-	-
	PM	D	D	B	D	D	B	A	A	A	A	-	-	-
Roundabout	AM	A	A	A	A	A	A	B	B	B	A	A	A	A
	PM	A	A	A	A	A	A	A	A	A	B	B	B	B

Intersection Concepts

- McCoy Road
 - Currently stop sign on Syene Road southbound
 - Capital City Trail crossing to the north

Level of Service by Movement - Syene Rd & McCoy Rd - Base Year Volumes

Alternative	Peak	Movement												Intersection
		Eastbound			Westbound			Northbound			Southbound			
		L	T	R	L	T	R	L	T	R	L	T	R	
Existing Conditions	AM	D		D				A	-			-	-	-
	PM	F		F				A	-			-	-	-
Roundabout	AM	A		A				A	A			C	C	B
	PM	B		B				A	A			A	A	A
Traffic Signal	AM	B		B				A	-			B	A	B
	PM	B		B				A	-			B	A	B

Level of Service by Movement - Syene Rd & McCoy Rd - Design Year Volumes

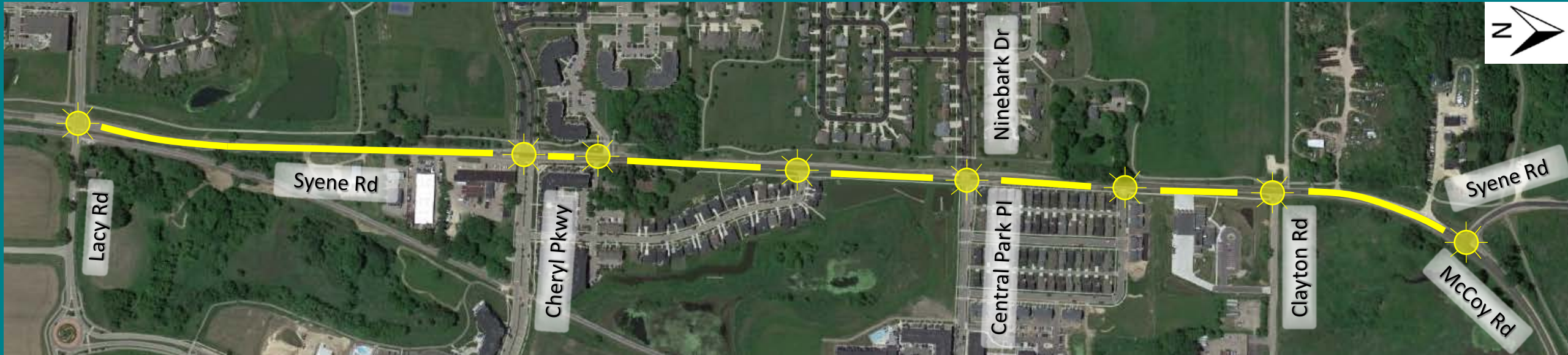
Alternative	Peak	Movement												Intersection
		Eastbound			Westbound			Northbound			Southbound			
		L	T	R	L	T	R	L	T	R	L	T	R	
Existing Conditions	AM	F		F				A	-			-	-	-
	PM	F		F				A	-			-	-	-
Roundabout	AM	A		A				B	B			E	E	D
	PM	C		C				A	A			B	B	B
Traffic Signal	AM	C		B				A	-			B	B	B
	PM	C		B				B	-			B	A	B

Intersection Concepts

- Aurora Lane and Argus Lane
 - Public request to remove restriction
- Rodeo Way, No Oaks Ridge, West Clayton Road
 - No change in control
 - Improvements to promote bicycle and pedestrian connectivity and neighborhood connectivity
- Possible mid-block crossings
 - Between Lacy Road and East Cheryl Pkwy
 - Between Rodeo Way and No Oaks Ridge

Roadway Lighting Options

Option 1: Intersections plus continuous lighting along full corridor

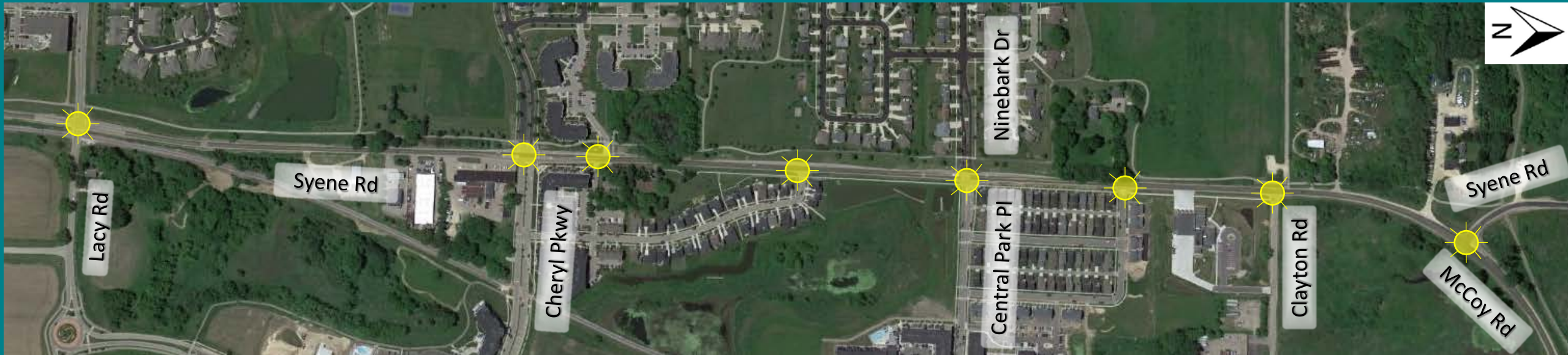


Legend

-  = Intersection Lighting
-  = Continuous Lighting

Roadway Lighting Options

Option 2: Roadway Intersections Only

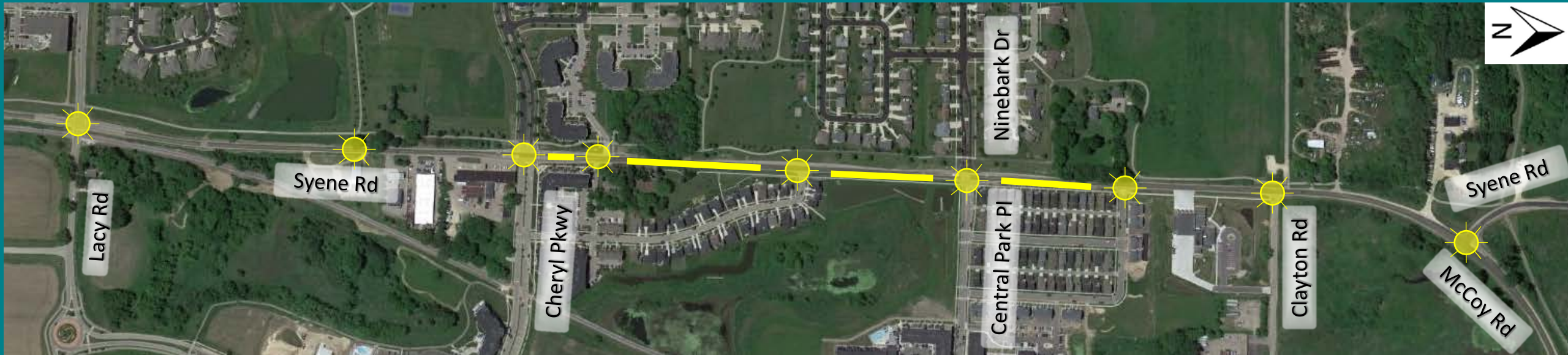


Legend

 = Intersection Lighting

Roadway Lighting Options

Option 3: Intersections plus High Traffic Segments



Legend

-  = Intersection Lighting
-  = Continuous Lighting

Improvement Concepts

- Stormwater Improvements
 - Addition of curb and gutter with storm sewer
 - Required to meet City ordinance
- Sanitary Sewer
 - Select locations
- Watermain
 - Select locations

Next Steps

- Review and approval of concepts by City
 - Common Council 3/9
 - Transportation and Transit Commission 3/11
 - Board of Public Works 3/15
 - Finance Committee and Common Council 3/23
- Preliminary plans
- Stormwater management evaluation and design
- Public meeting #2

Project Schedule

- Public Involvement Meeting February 2021
- City Approval of Concepts March 2021
- Preliminary Plans April 2021
- Public Meeting 2 Late Spring 2021
- Real Estate Early Summer 2021
- Construction 2022

How You Can Get Involved

- Complete the survey
- Reach out to the design team
 - Please provide comments by 3/11/2021
- Sign up for NotifyMe



Thank You For Your Time

Please contact either of the following for more information

Andrew McFadden

City of Fitchburg

Andrew.McFadden@fitchburgwi.gov

(608) 270-4261

Samantha Herheim

KL Engineering, Inc.

sherheim@klengineering.com

(608) 663-1218

Any
Questions