

In This Issue

1. [March is Women's History Month](#)
2. [Earth Month Event: Waterway Cleanups](#)
3. [Create a Native Garden or Rain Garden This Spring with Plant Dane](#)
4. [Three New Solar Opportunities for Fitchburg Residents](#)
5. [Apply to Join the Resource Conservation Commission](#)
6. [Governor Evers Prioritizing Stewardship in State Budget](#)
7. [Fitchburg Senior Center Partnering with Hy-Vee on Reusable Bags](#)
8. [Additional March Observances](#)
9. [Upcoming Events](#)

March is Women's History Month

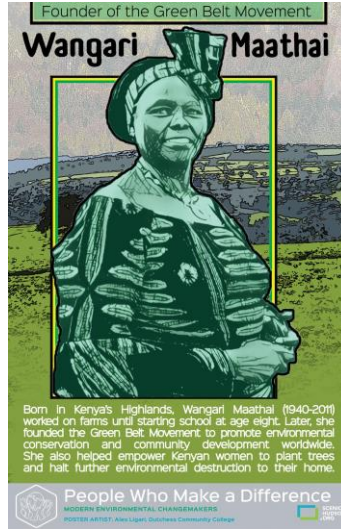
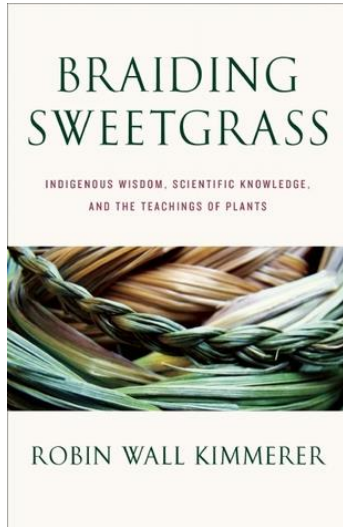
<https://sfenvironment.org/zh/celebrating-women-environmentalists-during-womens-history-month>

In February we celebrated Black History Month, and now in March we celebrate Women's History Month. Both observances serve as a special reminder of those notable figures whose accomplishments came in the face of greater obstacles and reduced opportunities due to their gender, their race, or both. In environmental and sustainability fields as well, the list of women who have provided important contributions is long and noteworthy, and the link above from the San Francisco Department of the Environment provides many examples of environmental champions to celebrate.

Here are a few more not found in the provided link:

- **Robin Wall Kimmerer** is an author, distinguished professor, and the director of SUNY's Center for Native Peoples and the Environment. Her book *Braiding Sweetgrass* is a look at natural history and ecology through the context of generations of passed-down indigenous wisdom.
- **Wangari Maathai** was an author, public speaker, nonprofit leader, and internationally renowned environmental advocate. Maathai formed the Green Belt Movement in Kenya, an NGO that blended environmental conservation and women's empowerment and led to her becoming the first African woman to win the Nobel Prize.
- **Kate Sessions**, the first woman to earn a science degree from the University of California, is perhaps the most important figure in San Diego's urban environmental history. Sessions began the process of planting trees in what is now the city's Balboa

Park in the late 1800s, planting thousands of trees and other plants around San Diego in her lifetime and visibly transforming an entire city through her efforts.



Earth Month Event: Waterway Cleanups

<http://www.fitchburgwi.gov/2634/Waterway-Cleanups>

From Claudia Guy, City of Fitchburg Environmental Engineer

Mark your calendars! The 2021 Waterway Cleanups will take place on Saturday, April 10 from 9:00AM-11:00AM (rain date: Saturday, April 17). Cleanup locations will be posted at this website as details are firmed up: <http://www.fitchburgwi.gov/2634/Waterway-Cleanups>. We will be practicing social distancing, following Dane County Health's guidelines, and encourage participants to wear a mask during the event.

If you'd like to volunteer, feel free to sign up for the "Waterway Cleanup" notification list at <http://www.fitchburgwi.gov/list.aspx>. If you are interested in leading a cleanup, please reach out to the City's Environmental Engineer at claudia.guy@fitchburgwi.gov for more information.

Thank you for your interest in volunteering to help keep our waterways clean!

Create a Native Garden or Rain Garden This Spring with Plant Dane

<https://ripple-effects.com/plantDane>

Plant Dane is a program of the "Ripple Effects" partnership between the Dane County Land & Water Resources Department and the Madison Area Municipal Stormwater Partnership (MAMSWaP), of which Fitchburg is a member.

Starting a native garden, no matter how small, can be a beautiful focal point to your landscape that is not only fun to plant, but fun to observe through the seasons. Native plants have a lot of hidden benefits too; they provide food and habitat for local wildlife and help rainwater soak into the ground through their deep root systems protecting our lakes, rivers, and streams from polluted stormwater runoff. The Plant Dane Native Plant Program provides native plants to schools, non-profit organizations, municipalities, and residents in Dane County for a fraction of the normal retail cost. Consider converting some of your turf grass or pavement into a native garden this spring and have a Ripple Effect on our waters!

Choose from more than 40 native plant species including: butterfly, prairie, and rain garden kits. Plants are \$2.25 each and all species must be ordered in multiples of four. Donations to purchase native plants for specific community and school projects will also be accepted through Plant Dane. Program details are available at www.ripple-effects.com/plantdane. All orders must be received by March 21st, 2021.

The graphic features the 'Plant Dane' logo in a green script font on the left. To its right is an illustration of a blue water drop falling into a pond, creating ripples, with a stylized plant having red and blue flowers growing from the center. On the right side, the text reads 'NATIVE PLANTINGS AND RAIN GARDENS CAN HAVE A RIPPLE EFFECT ON OUR WATERS' in green and blue. Below this is a blue arrow pointing right with the text 'Learn more at www.ripple-effects.com/plantdane'. At the bottom, there are four green rectangular boxes, each with a water drop icon and a title: 'ORDER' (a variety of native plants for only \$2.25/plant, deadline MARCH 21ST), 'DONATE' (funds to purchase native plants for local community projects, deadline MARCH 21ST), 'GROW' (native plants for school and community projects, seed and instructions provided), and 'LEARN' (how to build a rain garden, register for the virtual rain garden workshop series, FEB 16TH, MAR 2ND & MAR 16TH ONLY \$10).

Questions? Christal Campbell (608) 224-3746 / campbell.christal@countyofdane.com



Three New Solar Opportunities for Fitchburg Residents

<https://www.mge.com/our-environment/green-power/solar-power/shared-solar-program>

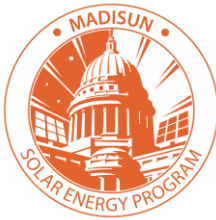
<https://daneclimateaction.org/initiatives/Sustainability-Leaders-Collaborative/Solar-Group-Buy-2021>

Summer and sunnier days are coming, and as if you needed one more reason to be excited about the increased sunshine headed our way, Fitchburg residents have three great opportunities to participate in local solar projects, through Legacy Solar Cooperative, RENEW Wisconsin, and Madison Gas & Electric:

1. **Legacy Solar Co-op group buy:** Legacy Solar Cooperative is a member-based non-profit that provides assistance and resources for energy efficiency and solar energy projects. In 2020, Legacy Solar led a group-buy opportunity in western Wisconsin, wherein multiple customers pooled their purchasing power to buy solar panels for their homes, businesses, and non-profits at a discount by buying at a larger scale together. Legacy Solar is running another group buy program in 2021, this time for interested Dane County residents. If you'd like to learn more about this program and sign up to receive more information, you can do so on Legacy's website here: <https://legacysolarcoop.org/solar-group-buys/>



2. **RENEW Wisconsin MadiSUN:** RENEW Wisconsin is a non-profit committed to expanding the use of renewable energy throughout the state, advocating for green policies and practices, and connecting interested individuals and groups with the resources they need to further their renewable energy journeys. The MadiSUN program is another group-buy program, sponsored by the City of Madison, that helps residents lower the cost of solar installations at their homes through aggregated demand, and in 2021 the group-buy opportunity is being extended to all residents in Dane County. Check out the website at <https://www.madisunsolar.com/> to learn more about this opportunity.



3. **MG&E Shared Solar:** Powering your home or business with clean energy is now easier than ever with Shared Solar—Madison Gas and Electric's (MGE) community solar program that serves more than 1,700 residential and business customers with local solar from arrays in Middleton. With the program more than 80% subscribed and more participants joining every week, now is the time to sign up. Shared Solar is designed for homeowners, renters and business customers who want to add more renewables to their energy mix. You can join at a level that works for you—from a single share to up to half of your annual electricity use. Contact the Shared Solar team at sharedSolar@mge.com or visit <https://mge.com/sharedsolar> for details and to learn how your participation helps to advance shared energy goals, including MGE's goal of net-zero carbon electricity by 2050.



Apply to Join the Resource Conservation Commission

<https://www.fitchburgwi.gov/618/Resource-Conservation-Commission>

The Resource Conservation Commission is tasked with advising City of Fitchburg staff on policies, programs, and communications related to stormwater management, solid waste and recycling, erosion control, energy efficiency, and natural resource and environmental preservation. Beginning this May, the RCC has an opening for a citizen member; if you are

interested in being considered for a mayoral appointment to this commission, see the list of criteria and submit your application at <https://www.fitchburgwi.gov/799/Boards-Commissions>.

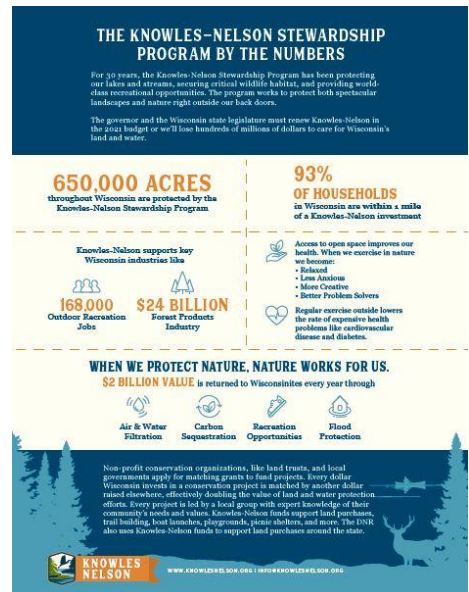
Governor Evers Prioritizing Stewardship in State Budget

<https://knowlesnelson.org/evers-budget-proposes-significant-investment-to-address-climate-change-protect-public-lands/>

Governor Evers released his proposed budget for 2021-2023 in February, and among the items is a requested increase in funding for Wisconsin's Knowles-Nelson Stewardship Fund, a key piece in the state's proud tradition of public lands preservation. Created in 1989, the Knowles-Nelson Stewardship Fund has long been a bipartisan, widely popular state program charged with acquiring land for public recreation, natural resource preservation, fishing and hunting, and other uses that respect Wisconsin's commitment to public lands and conservation. The program name also reflects the state's broad commitment to such efforts (reflected in over 90% statewide support for continuing the program in [December polling](#)), named for one Republican (Warren Knowles) and one Democratic (Gaylord Nelson) Governor of Wisconsin.

In addition to renewing the program for another 10-year period, Gov. Evers' budget proposes increasing the Stewardship Fund budget to \$70 million annually, an increase over current spending but below the peak budget of \$86 million over a decade ago. While over \$500 million has been spent on conservation and stewardship over the program's lifetime, research suggests that \$2 billion in recreation opportunities and ecosystem services are provided to the state by the protected areas every year, making this program a winner not just for environmental and public health reasons, but for economic ones as well.

Click the infographic on the right to learn more about the Knowles-Nelson Stewardship Fund, and use the links on this [League of WI Municipalities page](#) to contact your state Senator or Representative and let them know what you'd like them to prioritize in upcoming budget decisions.



Fitchburg Senior Center Partnering with Hy-Vee on Reusable Bags

From the City of Fitchburg Senior Center

Americans use 100 billion plastic bags a year, which require 12 million barrels of oil to manufacture. According to Waste Management, only 1% of plastic bags are returned for recycling, leaving the vast majority to sit in landfills for hundreds of years or pollute ecosystems and waterways. Many animals suffer the consequences of our laziness. One in three leatherback sea turtles have been found with plastic in their stomachs, most likely from consuming plastic bags that they could not differentiate from jellyfish.

Luckily, there are many ways that YOU can make sure your plastic bags are recycled correctly! Simply put your clean plastic bags in a clear bag no larger than a basketball and place them in your BLUE recycling bin. Also, stores like Target, Kohl's, Metcalfe's Market, Pick 'n Save, Walmart, and Woodman's have recycling stations where bags can be brought. They partner with businesses that recycle and reuse the material, preventing it from being released to a landfill. If bringing your bags to the store isn't convenient for you, the Fitchburg Senior Center will be holding a plastic bag drop off for the entire month of April! The lower level vestibule will be open 24/7, and a barrel will be placed there for bags to be left.

Thanks to the Fitchburg Senior Center Friends, as a special incentive, community members who drop off plastic bags to be recycled can enter their name to win one of ten reusable bags from HyVee, which is a great way to reduce plastic bag use altogether! Help us keep our community clean and protect the environment.

Additionally, through the month of April, when you buy a red "my heart" Hy-Vee reusable bag for \$2.50 (see photo at right), one dollar of your purchase goes to the Fitchburg Senior Center as a donation.

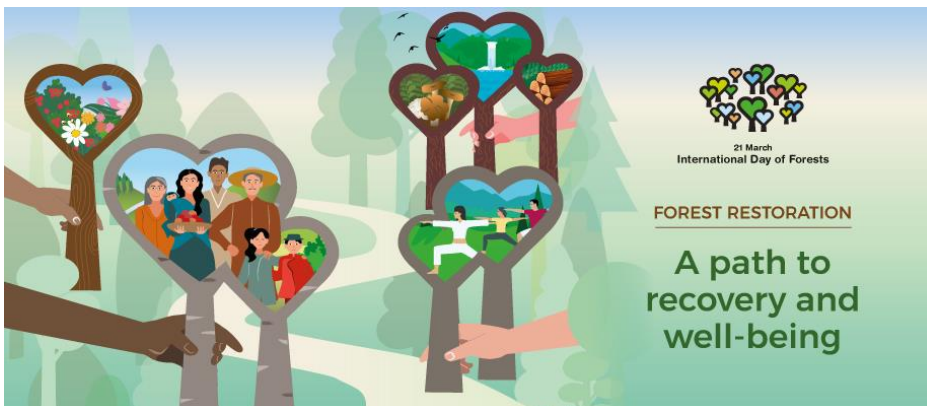


Additional March Observances

INTERNATIONAL DAY OF ACTION FOR RIVERS
MARCH 14, 2021



Forests and Livelihoods: Sustaining People and Planet



Upcoming Events

Public Transportation Services – Public Meeting

In response to ridership changes due to the pandemic, transit routes in the City of Fitchburg were discontinued or reduced in 2020. A second public meeting will take place next week to discuss recent transit service changes, the mobility needs of City residents, and opportunities for future service.

Wed. March 17, 10:00 am

<http://www.fitchburgwi.gov/223/Public-Transportation-Services>

Fitchburg Mobile Food Pantry

If you or someone you know are in need of food assistance, please stop by the Lacy Rd Fire Station and Safety Building on March 24 for a no-contact food distribution provided by Second Harvest Foodbank. No reservations or questions, pickup will be behind the station.

Wednesday, March 24, 3:30-4:30pm

5791 Lacy Rd, Fitchburg, WI 53711

Sustain Dane Master Recycling Courses

Take part in Sustain Dane's new Master Recycler course, by attending two 90-minute online sessions and then conducting an educational/outreach project that applies what you learned. Two more sessions are planned for July, and registration is free for Sustain Dane members or \$15 for members of the public (full and partial scholarships are available).

Wednesdays Apr 7 and 14, 12pm-1:30pm

<https://sustaindane.org/eventbrite-event/master-recycler/>

Fitchburg Waterway Cleanups



Join a local group and help to keep Fitchburg's waterways clean! Volunteers will be practicing social distancing and are advised to wear masks. See the link below for signup information.

April 10

<http://www.fitchburgwi.gov/2634/Waterway-Cleanups>

Share the News

Tell your friends to subscribe to Green Fitchburg on the city website
<http://www.fitchburgwi.gov/list.aspx> > Green Fitchburg

- a. Visit Fitchburg's "Notify Me®" web page:
<http://www.fitchburgwi.gov/list.aspx>
- b. Type your email address in the box and select "Sign In"
- c. To receive text messages enter your phone number and select "Save"
- d. Click  (to subscribe/unsubscribe to emails) and/or  (to subscribe/unsubscribe) next to the lists to which you wish to subscribe / unsubscribe (e.g. "Green Fitchburg" is the mailing list for environmentally friendly suggestions or events)

Please contact Phil Grupe, Sustainability Specialist, at phil.grupe@fitchburgwi.gov or 270-4259, if you have any questions, comments, and/or suggestions for future Green E-News topics.

