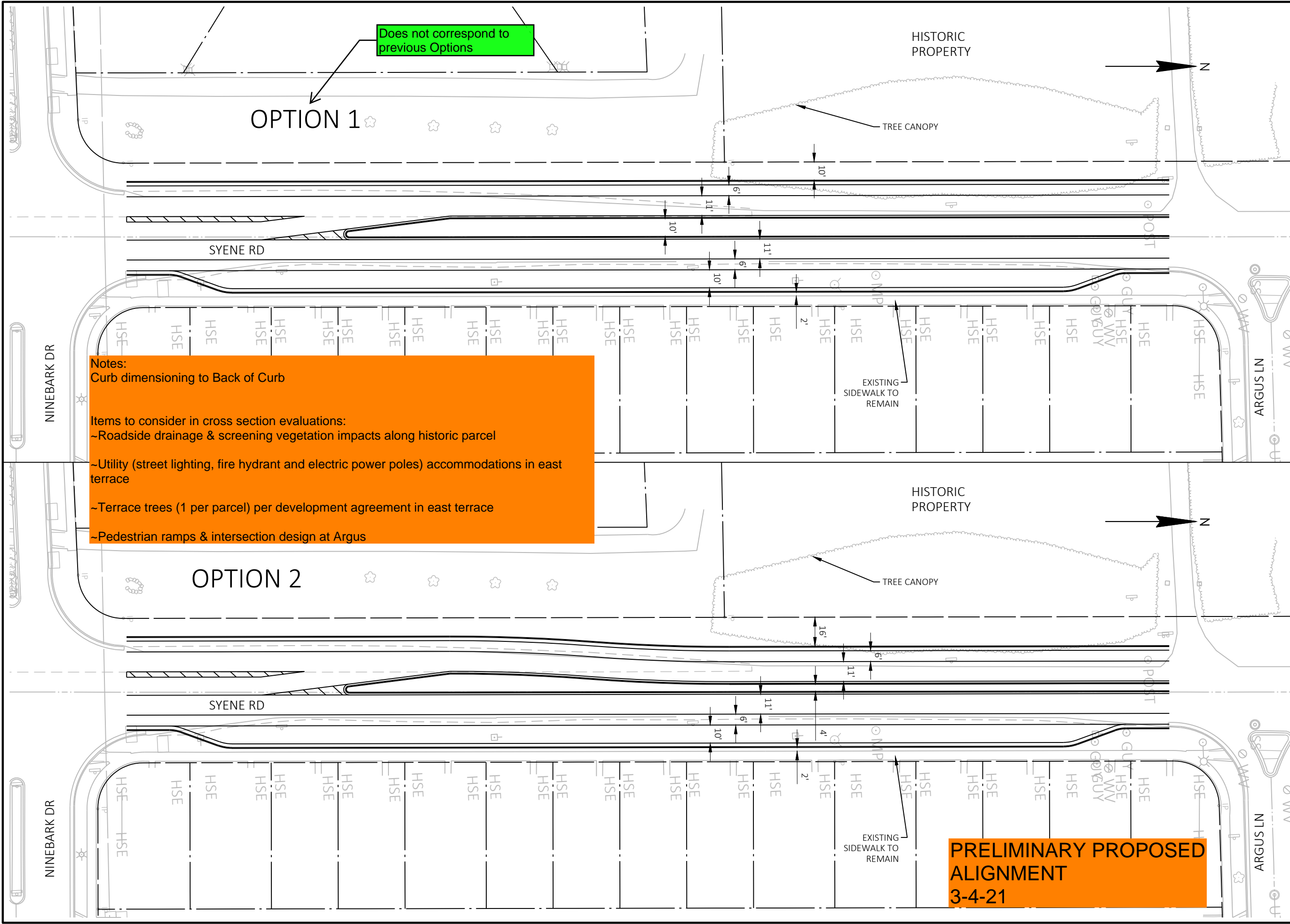


FILE NAME : G:\PITCHBRG\20087-000 SYENE ROAD\CIVIL 3D\SHEETS\OTHER\NINEBARK TO ARGUS SECTIONS\KL_NINEBARK TO ARGUS ALTERNATIVES.DWG PLOT BY : BRIAN ST. VINCENT PLOT DATE : 3/3/2021 10:25 AM



Does not correspond to previous Options

OPTION 1

OPTION 2

Notes:
 Curb dimensioning to Back of Curb

Items to consider in cross section evaluations:
 ~Roadside drainage & screening vegetation impacts along historic parcel
 ~Utility (street lighting, fire hydrant and electric power poles) accommodations in east terrace
 ~Terrace trees (1 per parcel) per development agreement in east terrace
 ~Pedestrian ramps & intersection design at Argus

PRELIMINARY PROPOSED ALIGNMENT
 3-4-21

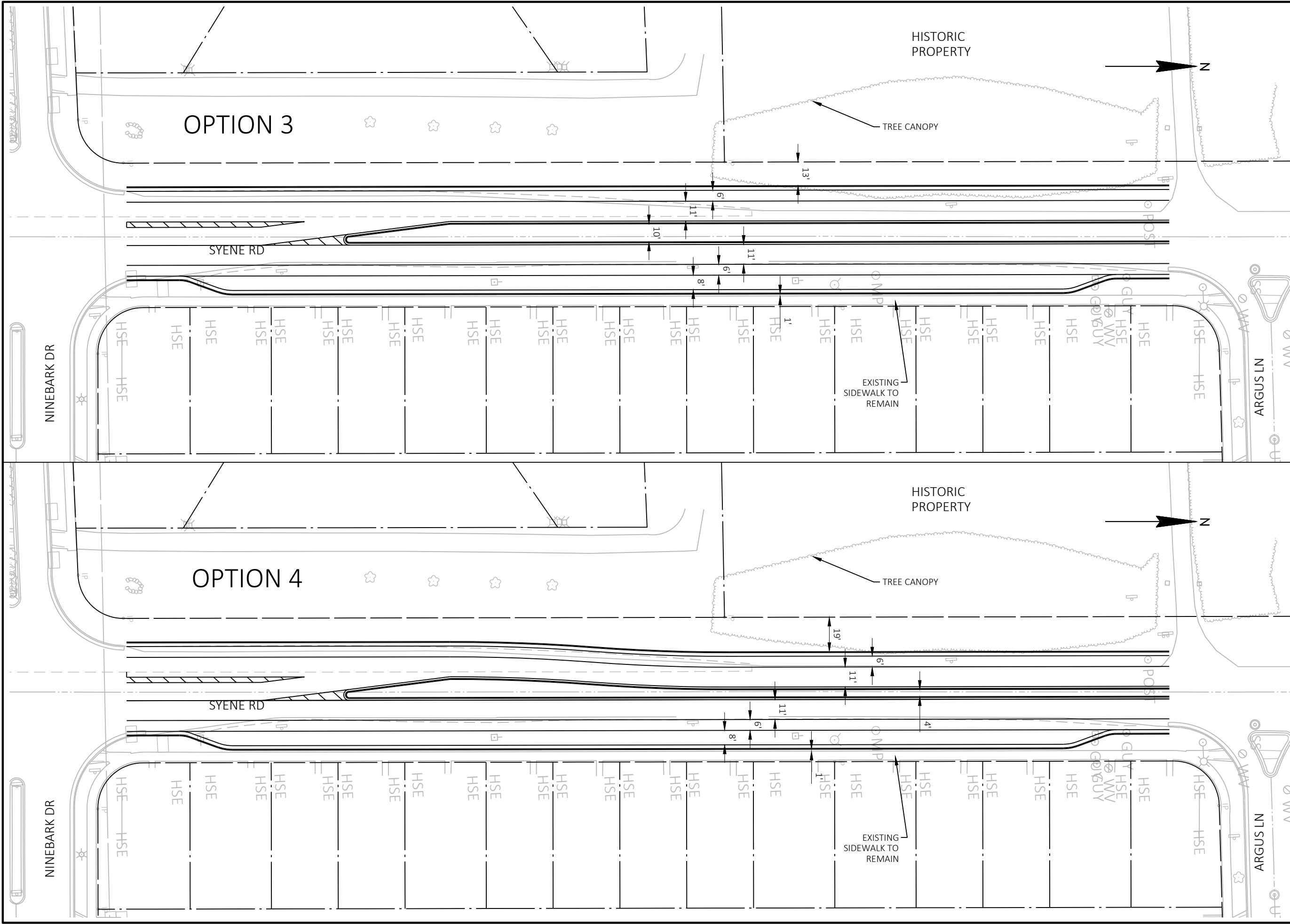
KL
Engineering
 [A] Better Experience
 5400 King James Way
 Suite 200
 Madison, WI. 53719
 Phone: (608) 663-1218
 Phone: (800)-810-4012
 http://klengineering.com
 email@klengineering.com

SYENE RD RECONSTRUCTION
NINEBARK TO ARGUS
OPTION DISPLAYS

Project No: XXXXXX-XX
 Date: XX-XX-XXXX
 Designed By: XXX
 Drafted By: XXX
 Checked By: XXXX

Revisions: XX-XX-XXXX

SHEET NO.
X OF **X**



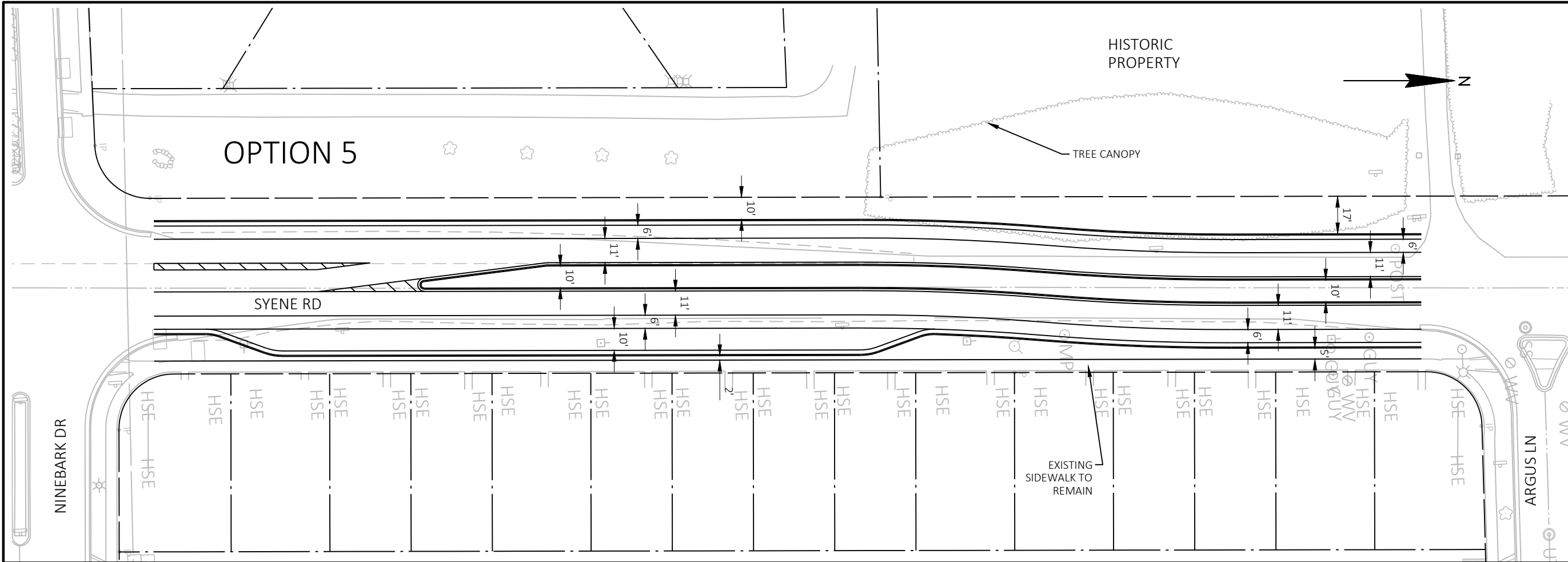
KL
Engineering
 [A] Better Experience
 5400 King James Way
 Suite 200
 Madison, WI. 53719
 Phone: (608) 663-1218
 Phone: (800)-810-4012
<http://klengineering.com>
email@klengineering.com

SYENE RD RECONSTRUCTION
NINEBARK TO ARGUS
OPTION DISPLAYS

Project No:	XXXXXX-XX
Date:	XX-XX-XXXX
Designed By:	XXX
Drafted By:	XXX
Checked By:	XXXX

Revisions:	XX-XX-XXXX
------------	------------

FILE NAME : G:\PITCHBRG\20087-000 SYENE ROAD\CIVIL 3D\SHEETS\OTHER\NINEBARK TO ARGUS SECTIONS\KL_NINEBARK TO ARGUS ALTERNATIVES.DWG PLOT BY : BRIAN ST. VINCENT PLOT DATE : 3/3/2021 10:25 AM



KL
Engineering
 [A] Better Experience
 5400 King James Way
 Suite 200
 Madison, WI. 53719
 Phone: (608) 663-1218
 Phone: (800)-810-4012
 http://klengineering.com
 email@klengineering.com

SYENE RD RECONSTRUCTION
NINEBARK TO ARGUS
OPTION DISPLAYS

Project No: XXXXXX-XX
 Date: XX-XX-XXXX
 Designed By: XXX
 Drafted By: XXX
 Checked By: XXXX

Revisions: XX-XX-XXXX

SHEET NO.
X OF **X**