

Stoner Prairie Park Background Context

Available Budget

The total budget available for the park development is approximately \$780,000. This amount is inclusive of any and all chosen amenities and costs such as park shelter(s), any dedicated parking, playground equipment, landscaping and landscape materials such as trees/shrubs/plantings/mulch.

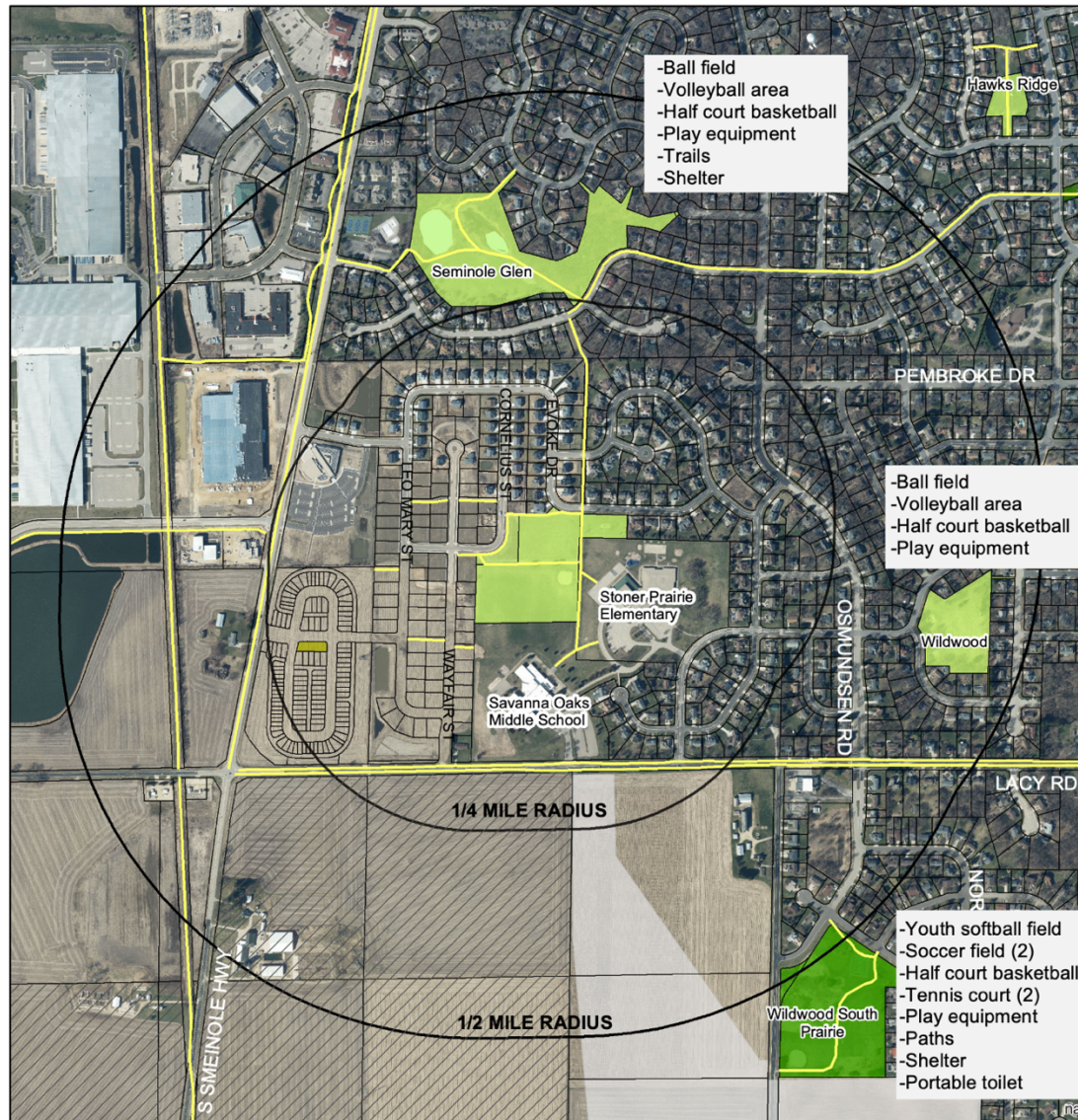
With this budget in mind, respondents are advised to keep in mind facilities available at other Fitchburg parks, available here:

<http://fitchburgwi.gov/DocumentCenter/View/14150/Park-Amenities-Chart>

And especially amenities available at parks in the immediate vicinity of Stoner Prairie Park:

[see next page]

Stoner Prairie Park - Neighborhood Scale



<ul style="list-style-type: none"> Community Park Area Park Neighborhood Park Private Park (playground) 	<ul style="list-style-type: none"> Solar Farm Bike trails/paths and routes Moraine Edge Open Space (Proposed)* <p>* Boundaries are not exact</p>	<p>Stoner Prairie Park Amenities</p> <ul style="list-style-type: none"> -Play equipment -Ball field -Ultimate frisbee (5.75 ac) -Path
---	---	--

Well Site Cost Savings Opportunity for Shelter

To accommodate new housing in the area, the City needs to install a new well/pumping station at the corner of Wayfair and Veldt drives. Since City Engineering will bring water and other utilities to the well site, this site has been designated as the location for any park shelter. City Engineering will effectively subsidize approximately half the cost of a medium size shelter with these improvements considering the City would need to erect a structure to surround the well in any case (and in this case the surrounding structure could be a park shelter). In other words, a shelter with bathrooms could be obtainable at half the otherwise cost. City Engineering needs to issue the RFP (request for proposal) for the well and utilities yet this summer; this survey and decisions about the shelter are timely given this need (within 60 days).

No formal bathrooms or drinking fountains currently exist in the park though a “port-a-potty” is brought out seasonally adjacent to the ball diamond. Two shelter options are provided for your consideration within the survey:

1. Basic shelter with bathrooms, includes open air reservable gathering/seating space only. Current estimated cost of completion, if included, would be \$275,000 out of the park budget (the other half of the cost would be paid for by City Engineering as explained above). An example shelter can be seen at Swan Creek park.
2. Intermediate shelter with bathrooms, includes both reservable outside and indoor enclosed space. Current estimated cost of completion, if included, \$375,000 out of the park budget (the other half of the cost would be paid for by City Engineering as explained above). An example shelter can be seen at Huegel-Jamestown park.

Verona Area School District (VASD) Equipment, Recreation Spaces and Parking

Park adjoining VASD facilities are open to the public during non-school hours, including playground equipment, walking paths, open recreation fields, and parking lots. We appreciate the generosity of VASD in this regard, and though there is no indication of any expected change in policy, ultimately VASD has control over its properties.

South Recreation Fields (VASD middle school adjacent)

These fields currently serve the community at large for open recreation, but also host regular league play for organizations such as Madison Ultimate Frisbee Association (MUFA) and others on a fee basis. The City is under no obligation to MUFA or others to "guaranty" access to these fields.

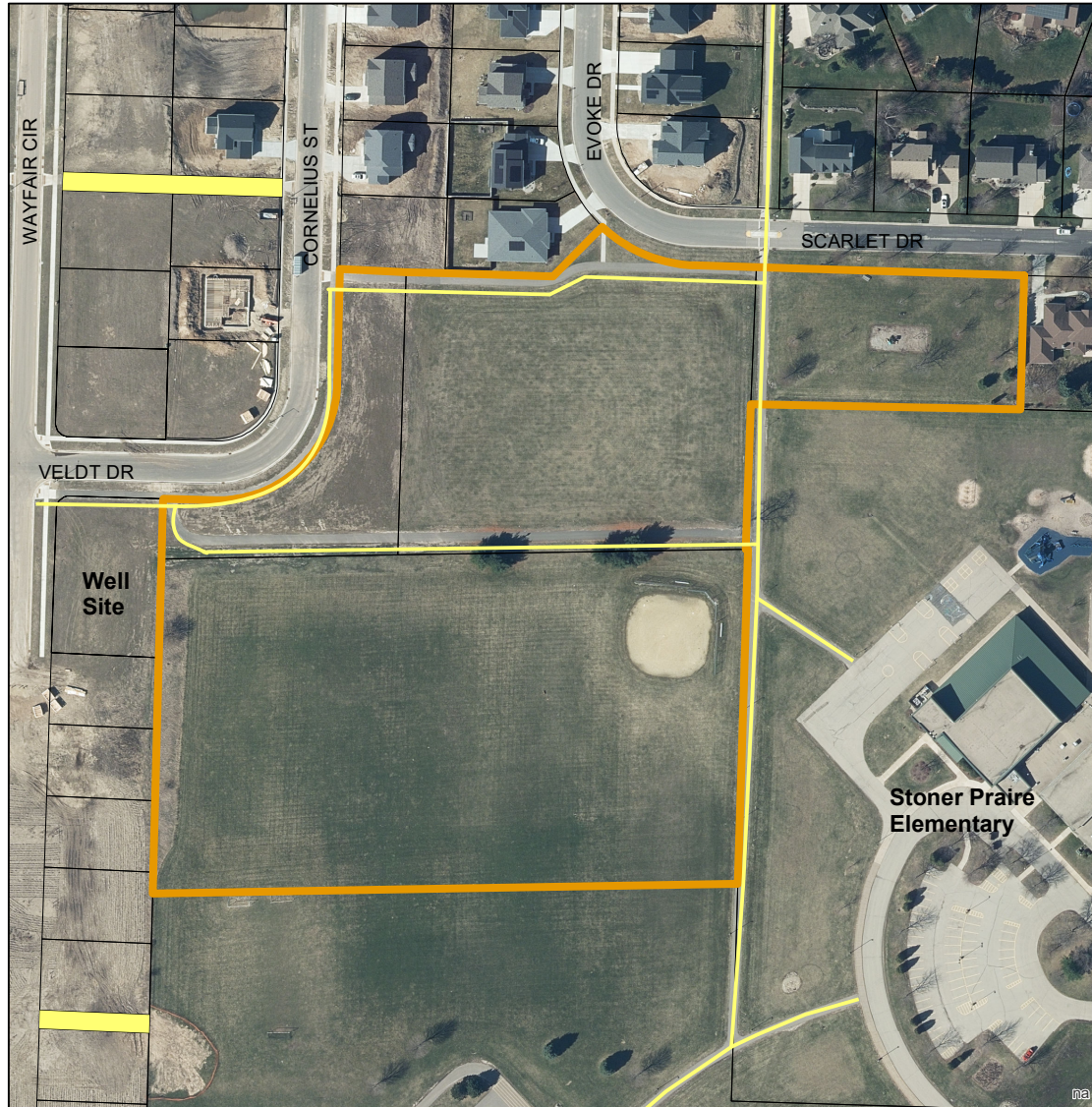
Overall Park Context




The completed project will stitch together formerly disparate parcels in mind of the Parks and Open Space (POSP) portion of the Comprehensive Plan, which includes the concept of Seams, Sociability and Solitude (connecting paths, gathering with others, and appreciation of nature are rough interpretations for these themes).

The combined park parcels total approximately 10.3 acres. The park is designated as an area park, primarily to serve a radius of a ½ mile which is congruent with the audience of this survey. Below are general City of Fitchburg standards for different park areas.

[see next page]

Stoner Prairie Park - Park Scale



 Bike trails/paths and routes	Amenities	
 Park Boundary	- Play equipment	School grounds
 Parcels	- Ball field	- Play equipment
	- Ultimate Frisbee (5.75 ac)	- Basketball courts
	- Path	- Play fields

2

N
0 0.025 0.05 Miles
Page 1 of 3

Figure 1: City of Fitchburg Community, Area, and Neighborhood Park Standards

	Neighborhood Park*	Area Park	Community Park
Acres/1,000 Population	3 acres	4 acres	5 acres
Service Area	1/4 mile radius	1/2 mile radius	2 ½ mile radius
Desirable Size	5-10 acres	10-20 acres	50-100 acres
Desirable Site Facilities	<ol style="list-style-type: none"> 1. Junior size play apparatus 2. Softball diamond 3. One 1/2 basketball court 4. Area for lawn and field games 5. Area for crafts 6. Open area for general play 7. Volleyball area 8. Soccer field 9. Tree and shrub planting 10. Picnic tables and benches 11. Drinking fountain (size permitting) 12. Shelter (size permitting) 13. Accessible path system (size permitting) 14. Natural areas 	<ol style="list-style-type: none"> 1. All age play apparatus 2. Softball diamonds 3. One basketball court 4. Area for lawn and field games 5. Area for crafts 6. Open area for general play 7. Volleyball area 8. Soccer field 9. Trees and shrub plantings 10. Picnic tables and benches 11. Drinking fountain 12. Shelter (w/ restrooms if not provided within a school structure) 13. Accessible path system 14. Natural areas 15. Parking area where necessary 16. Tennis court 17. Outdoor education area 18. Sledding slope (according to insurance carrier recommendations) 19. Horseshoe pits 	<ol style="list-style-type: none"> 1. All-age play apparatus 2. Softball diamonds (lighted) 3. Basketball courts 4. Area for lawn and field games 5. Area for crafts/passive recreation 6. Open area for general play 7. Volleyball courts (lighted) 8. Soccer fields 9. Tree and shrub plantings 10. Picnic areas, including grills 11. Drinking fountains 12. Year-round shelter with restrooms 13. Accessible path system 14. Natural areas 15. Parking area 16. Tennis courts (lighted) 17. Outdoor education areas 18. Sledding slope 19. Horseshoe pits 20. Outdoor amphitheater 21. Botanical sculpture garden 22. Swimming pool 23. Indoor recreation center 24. Concessions 25. Lacrosse field 26. Baseball diamond (lighted) 27. Bleachers for athletic fields 28. Lighted ice-skating rink 29. Frisbee golf course

As you complete the short survey, you will be presented an opportunity to provide input on both use *and* budget priorities. The below cost approximations should be somewhat helpful as reference points. Note that inflation has been accounted for shelter construction in the other parts of this document and within the survey; some shelter costs may seem off because total cost is shown (including the full cost of a well).

Swan Creek shelter with bathrooms – 2008 construction = \$172,251



2012 Oak Meadow playground – poured in place = \$22,000



2016 Wilwood South Tennis courts = \$109,695



2016 H/J park shelter with bathrooms = \$533,763



2020 Park ID sign - \$1,750 each



½ basketball court Country Vineyard 2020 = \$15,000



S. Johnson 2020 playground and swing set \$40,000


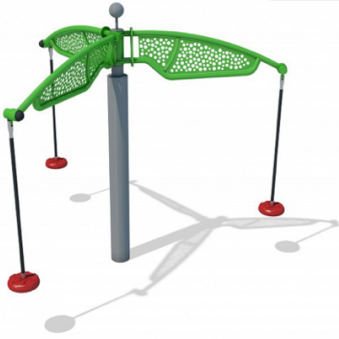


Terravessa playground and swing 2020 = \$40,000



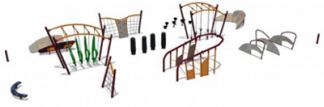
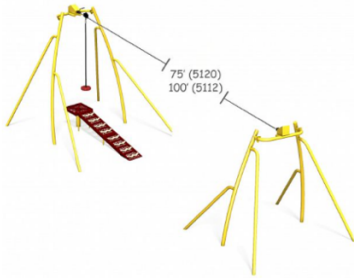
Park path - \$25.00 per linear foot
1,250 linear feet around exterior of new parkland = \$30,000



 <p>Specs</p>	 <p>Specs</p> <p>New</p>
<p>Arch Swing \$6,481</p>	<p>TriRunner® \$12,912</p>

Prairie \$4,000 per acre



 <p>Specs</p>	 <p>Specs</p> <p>75' (5120) 100' (5112)</p>
<p>Youth 5000 \$90,824</p>	<p>SkyRun ZipLine - 100' \$16,050</p>

End.