

Syene Road Reconstruction Project



September 29, 2021



Project Team

- Andrew McFadden
 - Fitchburg Senior Transportation Engineer
- Samantha Herheim
 - KL Engineering, Inc, Consultant Project Manager
- Kevin Wehner
 - KL Engineering, Inc, Consultant Traffic Engineer
- Lance Williston
 - KL Engineering, Inc, Consultant Design Engineer

Presentation Agenda

- Public Engagement Goals and Process
- Project Location
- Project Background
- Need for Project
- Public Engagement Summary
- Cross Section Selection
- Improvement Concepts
- Concept Costs
- Project Schedule
- How to Get Involved
- Contact Information

Public Engagement Goals and Process

- Process
 - Second of 2 public meetings
 - First meeting was data gathering at concept level
 - Initially second meeting planned late spring 2021
 - Based on feedback, additional small group meetings held (9)
- Goals
 - Report back on cross section concepts
 - Discuss intersection concepts
 - Discuss preliminary plans
 - Next steps



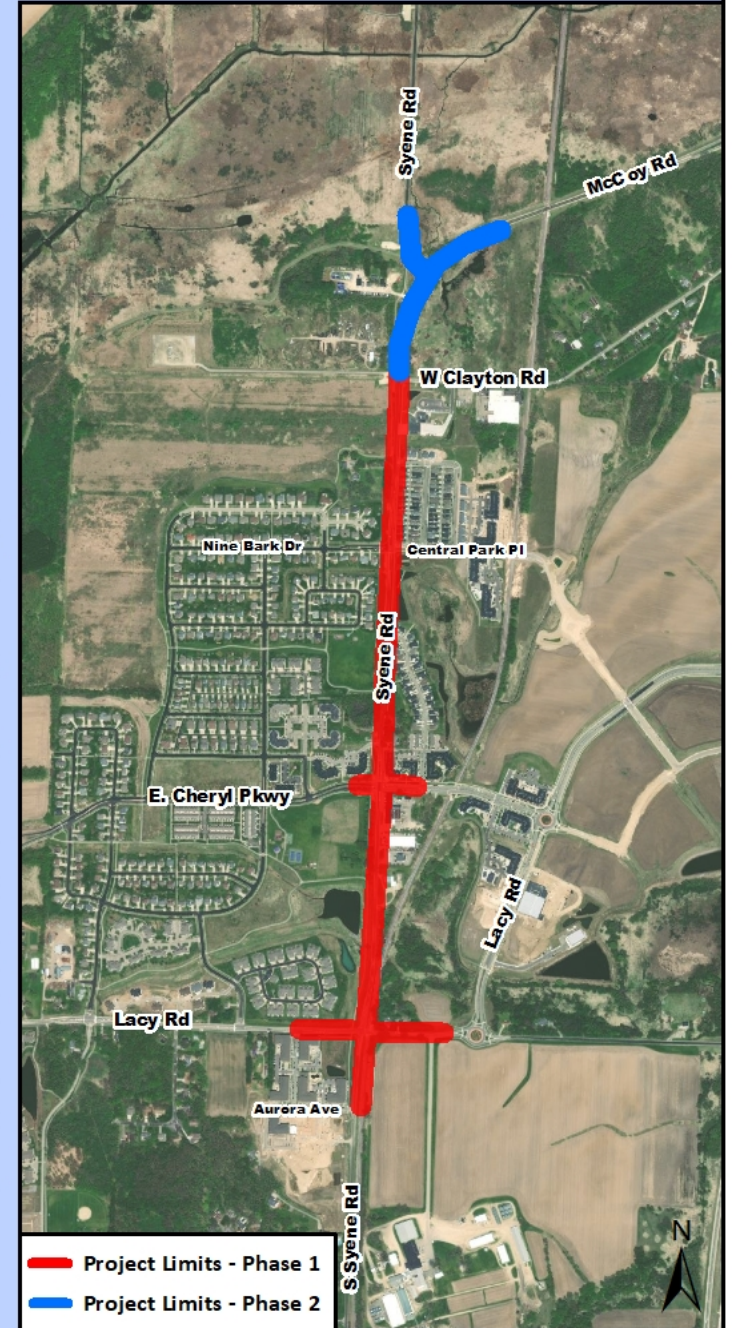
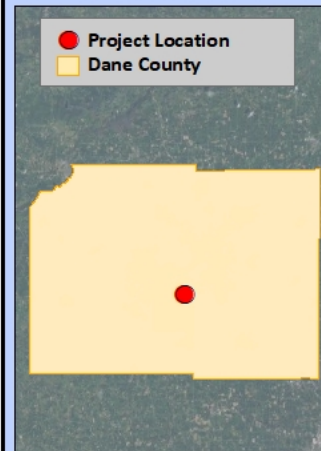
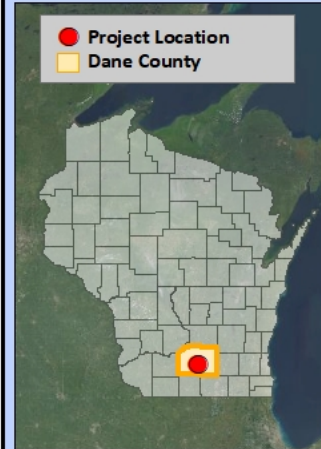
Project Location

Syene Road Aurora Avenue to West Clayton Road

Work north of West Clayton Road has been postponed in order to apply for Highway Safety Improvement Funding from WisDOT

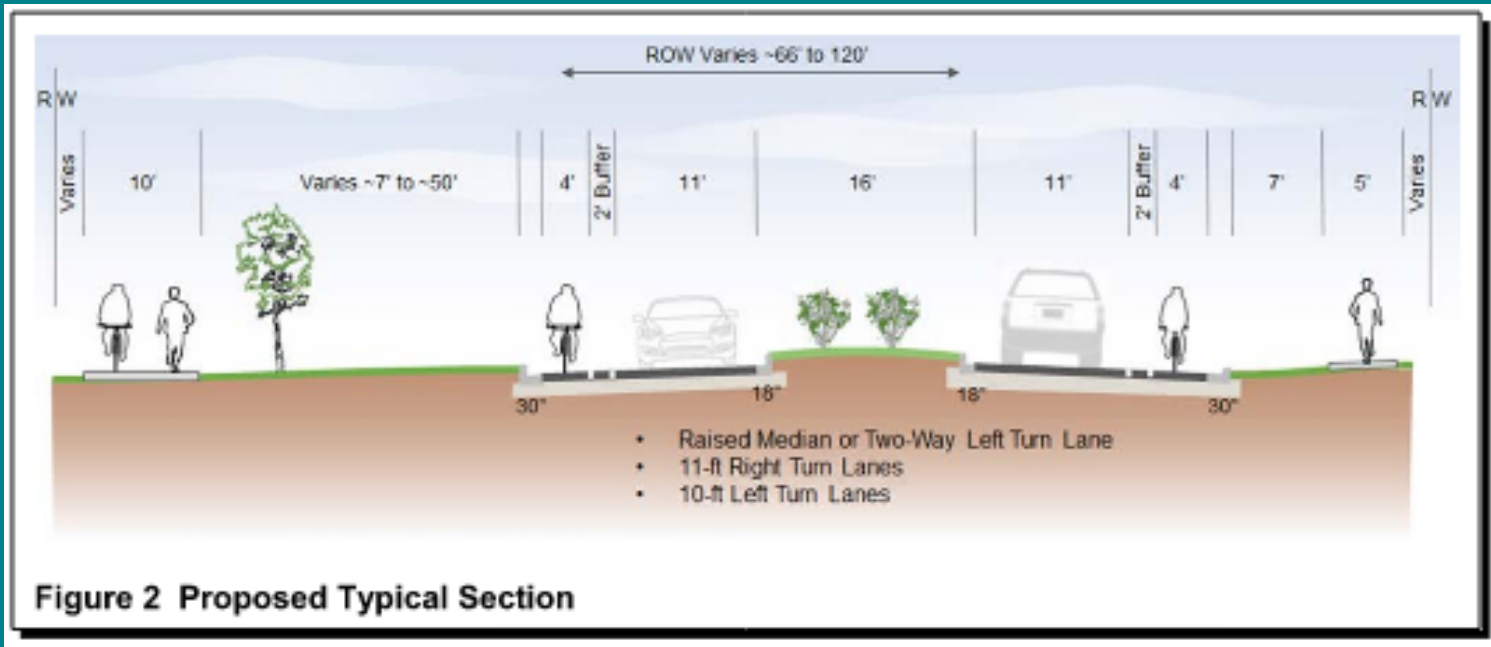
Syene Road Reconstruction - Project Location

Syene Road Reconstruction
McCoy Road to Aurora Avenue
City of Fitchburg



Project Background

- Recent development has changed the character of the corridor
- Roadway not updated with neighborhood developments
- City hired a consultant for a study project to determine how to reconstruct Syene Road to better accommodate the mixed-use development in the area
- Study was completed in 2019

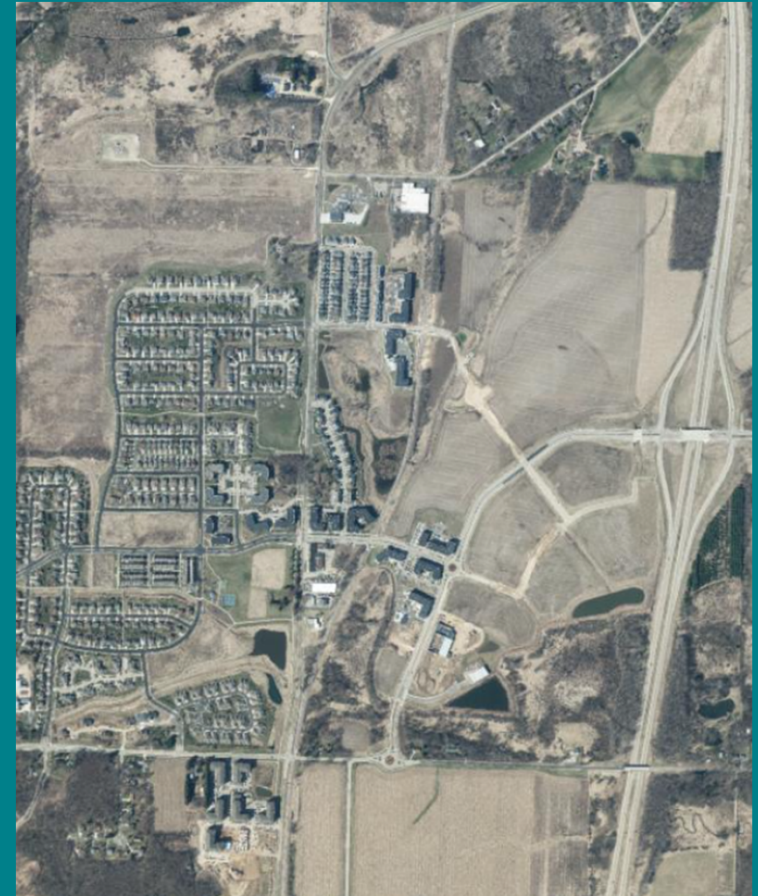


Need for Project

- Rural corridor transitioning to mixed-use
- Pavement condition
- Intersection functionality



2000 Dane Co Aerial Imagery



2020 Dane Co Aerial Imagery

Public Engagement Summary

- Public Meeting 1 feedback:
 - Comments and questions during the meeting
 - Online survey
 - Emails and calls to project team
- Feedback was varied, but common themes included:
 - Concern with traffic speed and safety
 - Concern with addition of parking between Ninebark/Central Park and Argus
 - Desire for lighting at intersections and select locations only
- Project website includes meeting video and survey results:

Public Engagement Summary

- 9 small group meetings
 - Created small group of residents and stakeholders
 - Worked thru additional cross section concepts
 - Discussed intersection concepts
- Project website includes meeting notes:
<https://www.fitchburgwi.gov/2669/Syene-Road-McCoy-to-Aurora>



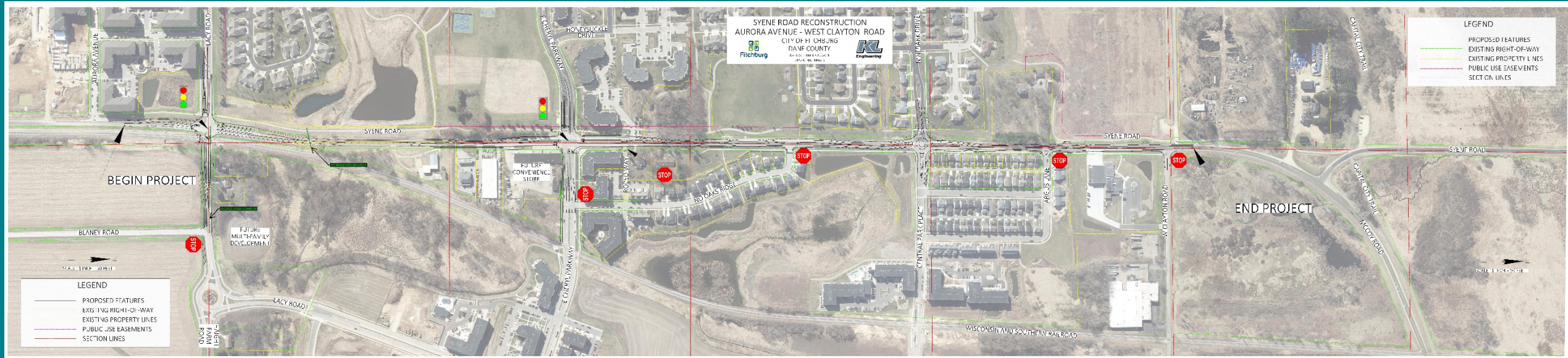
Cross Section Selection

- Concepts presented at first public meeting
 - Varied based on the segment of Syene Road
 - 11' travel lanes with 6' buffered bicycle lanes
 - Some segments included curb and gutter and/or median
- Small group meetings
 - Refined cross sections, still varied based on the segment of Syene Rd
 - 10' travel lanes with 6' buffered bicycle lanes
 - Some segments included curb and gutter
 - Median at some intersections only

Cross Section Selection

- City reviews and approvals
 - 7/27 Common council referral
 - 8/3 Bicycle Committee
 - 8/12 Transportation and Transit Committee
 - 8/16 Board of Public Works
 - 8/24 Common Council
 - R-149-21 approved 2' curb and gutter, 2-10' travel lanes, 2-6' buffered bicycle lanes, variable width terraces on either side, 10' shared use path west side, 5' sidewalk east side

Improvement Concepts Corridor



- Spot sanitary improvements
- Stormwater management
- Lighting at intersections and select locations
- Mid block crossings
- Speed reduction measures
- Sidewalk additions in select locations
- Some path pavement replacement (primarily far north end)

Improvement Concepts

Midblock Crossings

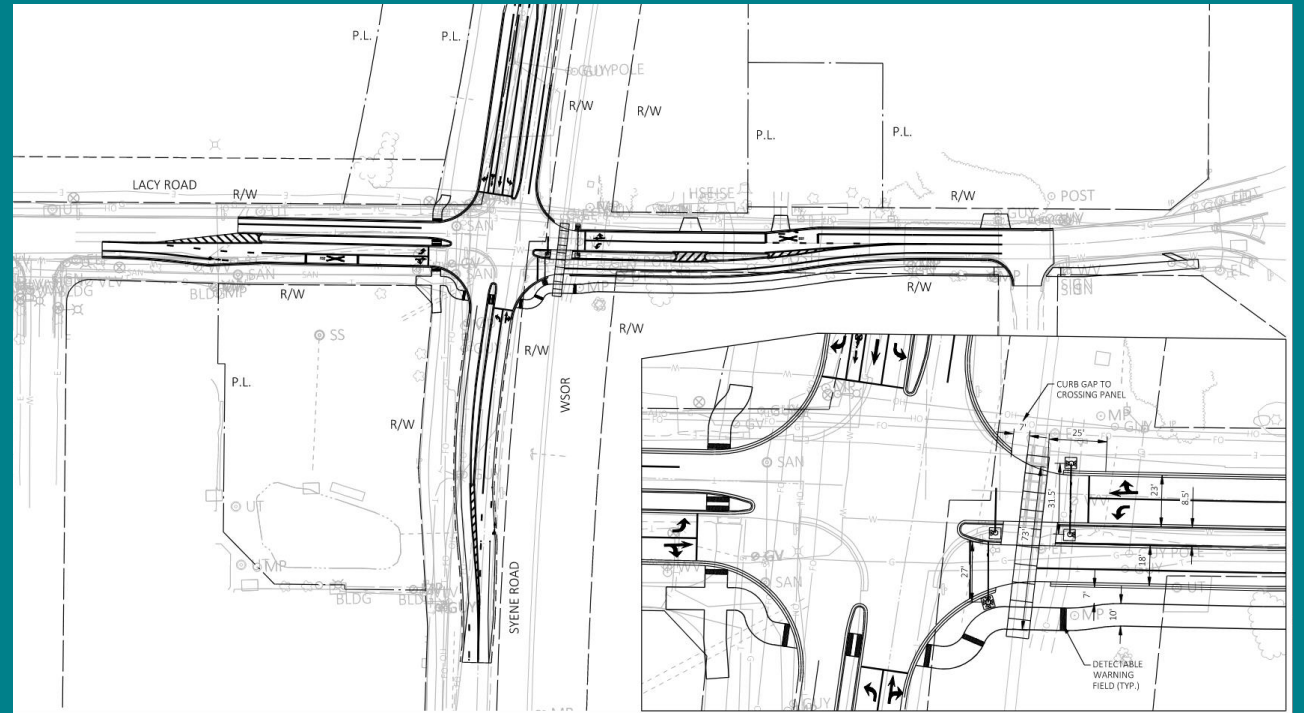
- Existing paths and sidewalks along much of roadway segment
- Existing Marked Crosswalks
 - ~0.4 miles between crosswalks at the Lacy Rd and E Cheryl Pkwy intersections
 - ~0.4 miles between crosswalks at the E Cheryl Pkwy & Ninebark/Central Park intersections
 - No marked crosswalks north of Ninebark/Central Park
- Proposed midblock crossings to address these long distances between intersection crosswalks



Improvement Concepts

Intersections

- Lacy Road
 - Currently all way stop
 - Project will include:
 - Signal with pre-emption for railroad crossing
 - Path on south side
 - Median and gates at crossing
 - Railroad hearing required



Improvement Concepts

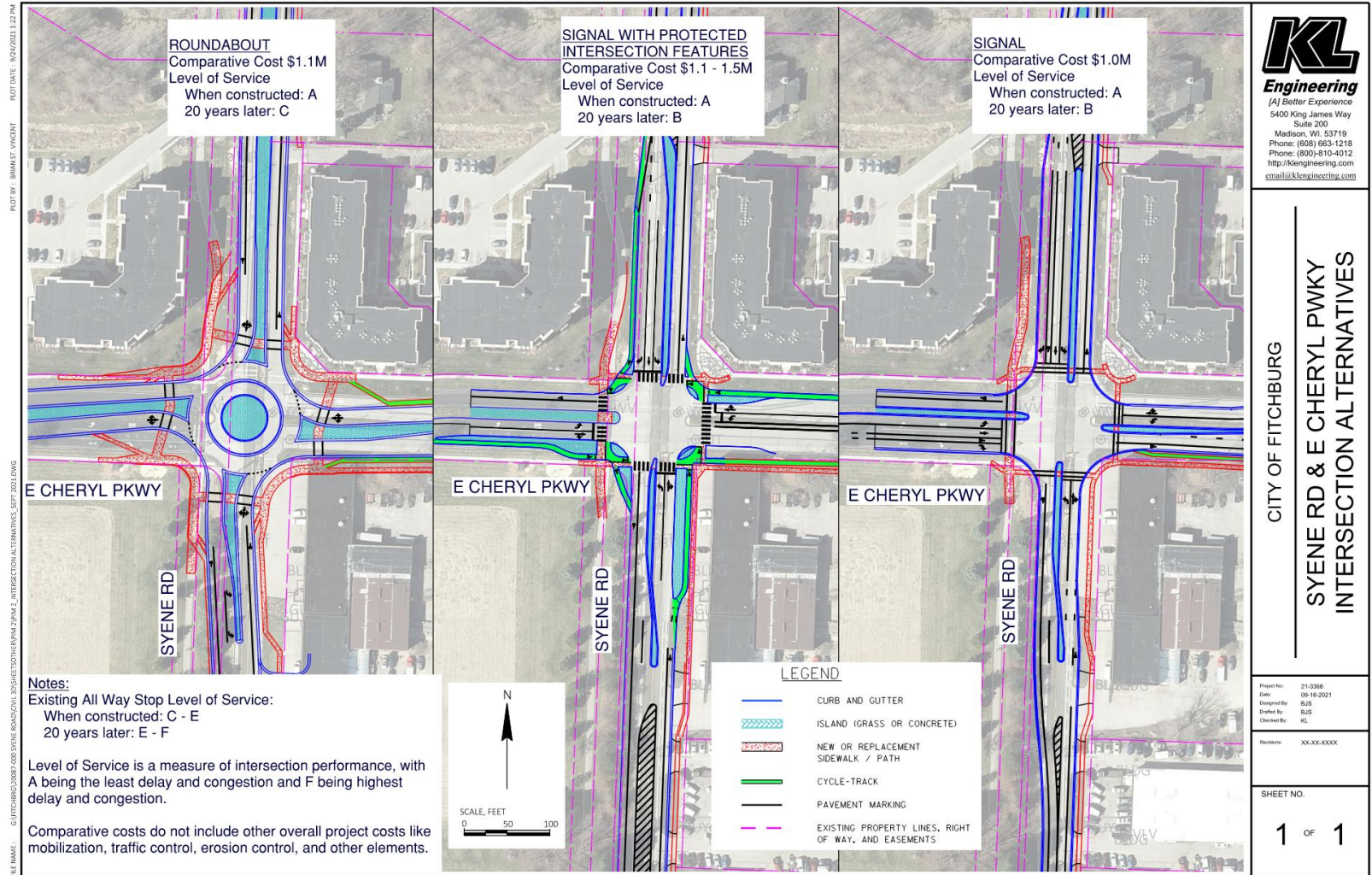
Intersections

- East Cheryl Parkway
 - Currently all way stop



Improvement Concepts Intersections

East Cheryl Pkwy



Improvement Concepts

Intersections

- Signal with Protected Intersection Features
 - Separate bikeway thru intersection
 - Additional separation for pedestrians from roadway with same crossing distance



Video explaining the design and how intersection is used is available here: <https://youtu.be/FIApbxLz6pA>
(credit Bicycle Dutch)

Improvement Concepts

East Cheryl Parkway

Level of Service (LOS): Measure of intersection performance, with A being the least delay & congestion and F being highest delay & congestion. Future LOS is in 20 years.

Comparative costs do not include other overall project costs like mobilization, traffic control, erosion control, and other elements.

<u>Concept</u>	<u>Roundabout</u>	<u>Protected Signal</u>	<u>Signal</u>
Initial LOS	A	A	A
Future LOS	C	B	B
Comparative \$	\$1.1 M	\$1.1 - 1.5 M	\$1.0 M
Real Estate	Small permanent interest	Temporary easements	Temporary easements
Bicycle	On road or slip lanes	Designated off road lanes thru intersection	Shares vehicle lanes
Pedestrian	Difficult for visually impaired and less dependable gaps for crossing than signal	Additional separation from roadway	Most traditional
Other	Less off-peak delay and less right-angle crashes compared to signal	None	None

Improvement Concepts

Intersections

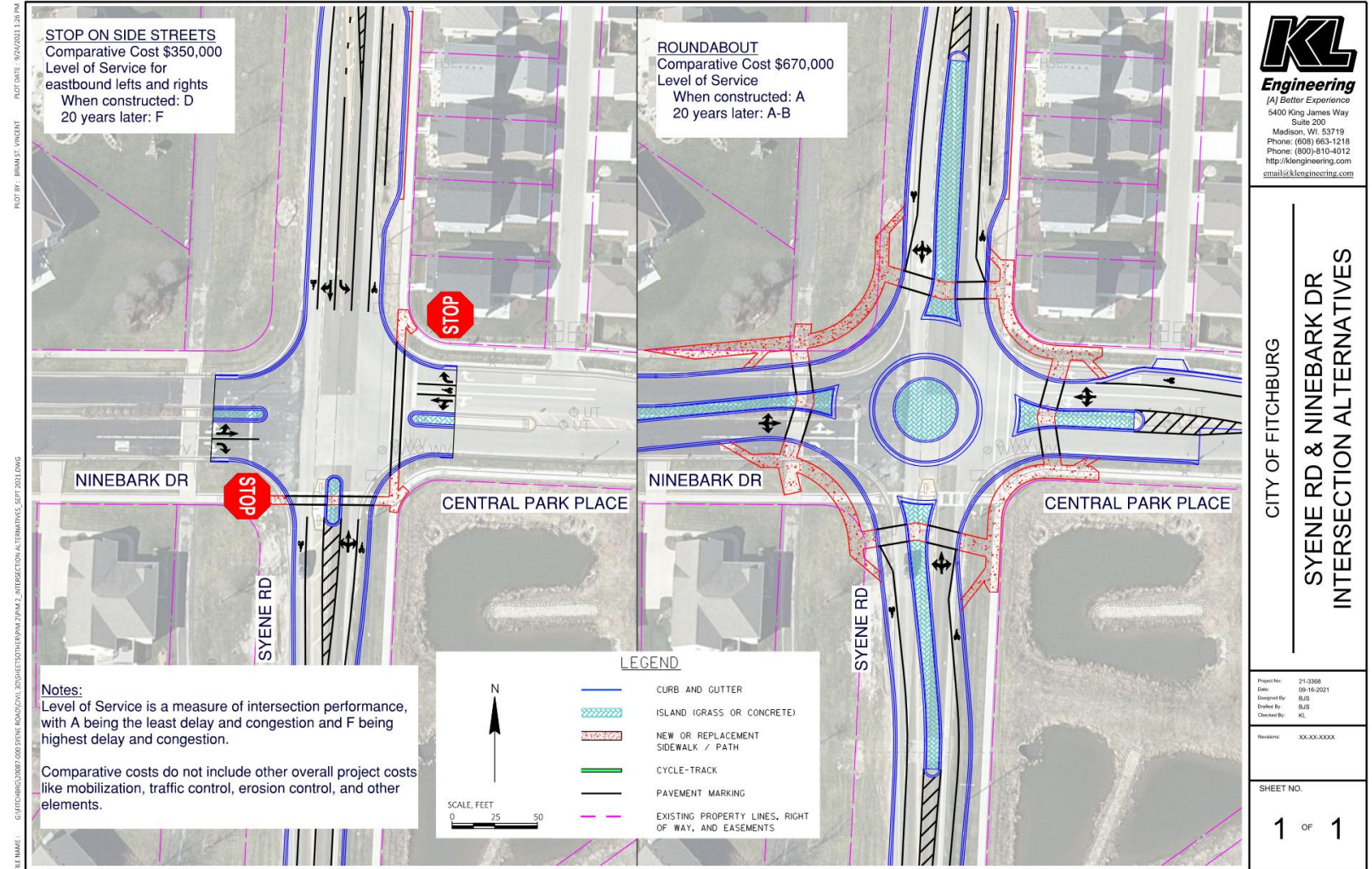
- Ninebark Drive/Central Park Place
 - Currently stop signs on Ninebark Drive and Central Park Place



Improvement Concepts

Intersections

Ninebark Dr / Central Park Pl



Improvement Concepts

Ninebark Dr / Central Park Place

Level of Service (LOS): Measure of intersection performance, with A being the least delay & congestion and F being highest delay & congestion. Future LOS is in 20 years.

Comparative costs do not include other overall project costs like mobilization, traffic control, erosion control, and other elements.

Concept

Initial LOS

Future LOS

Comparative \$

Real Estate

Bicycle

Pedestrian

Other

Stop on Side Streets

D (side streets)

F (side streets)

\$350,000

None

Bike lanes or vehicle lanes

Hard to find gaps to cross

Syene during peak times

Same as existing

Roundabout

A

A - B

\$670,000

Temporary easements

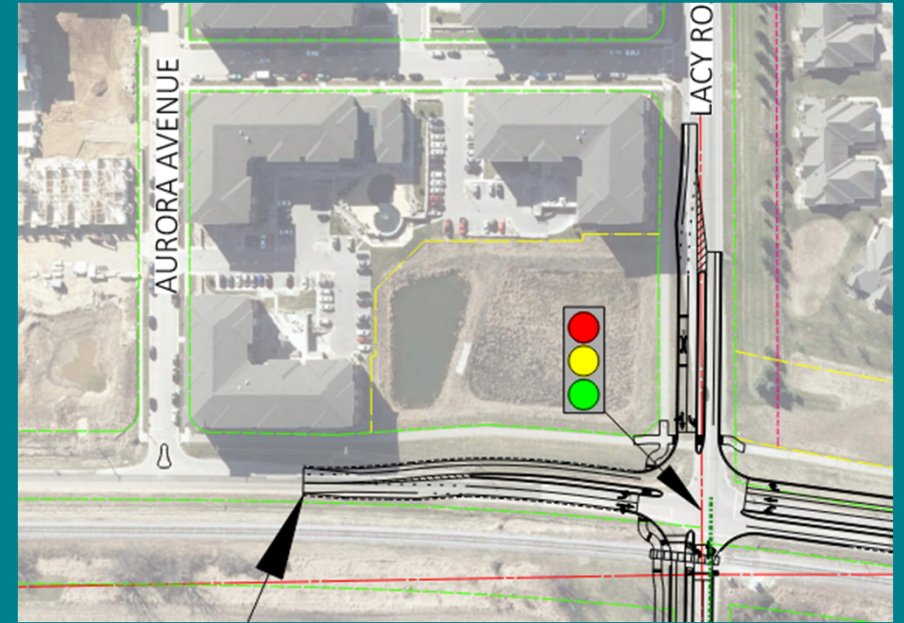
On road or slip lanes

Difficult for visually impaired

Provides traffic calming

Improvement Concepts

- Aurora Lane and Argus Lane Access
 - Public and police requests to remove restrictions in these locations
 - Argus planned to remain as right in right out
 - Aurora planned to be modified for full access
- On Street Parking
 - Central Park Place to Argus
 - Parking on south end



Concept Costs

- Costs dependent on the intersections selected
 - Aurora Ave to W Clayton Rd estimated at \$8.5 M assuming:
 - Signal at E Cheryl Parkway
 - Roundabout at Ninebark Dr/Central Park Pl
 - W Clayton Rd to McCoy Rd not included in this cost

Project Schedule

- Aurora Ave to Rodeo Way - 2022 construction
 - Plan Refinement thru end of 2021
 - Real Estate January 2022 – summer 2022
 - Permits spring 2022
 - Utility relocations spring 2022 – summer 2022
 - Construction fall 2022 – summer 2023
- Rodeo Way to McCoy Road – 2023 or 2024 construction

How You Can Get Involved



- Complete the online survey: <https://arcg.is/0Dr0LD>
- Reach out to the design team
 - Comments and survey responses requested by 10/13/2021
- Participate in Small Group Meetings – Contact Andrew McFadden
Andrew.McFadden@fitchburgwi.gov
- Sign up for NotifyMe
- Project updates will be added to the website:
<https://www.fitchburgwi.gov/2669/Syene-Road-McCoy-to-Aurora>

Thank You For Your Time

Please contact either of the following for more information

Andrew McFadden

City of Fitchburg

Andrew.McFadden@fitchburgwi.gov

(608) 270-4261

Samantha Herheim

KL Engineering, Inc.

sherheim@klengineering.com

(608) 663-1218

Any
Questions