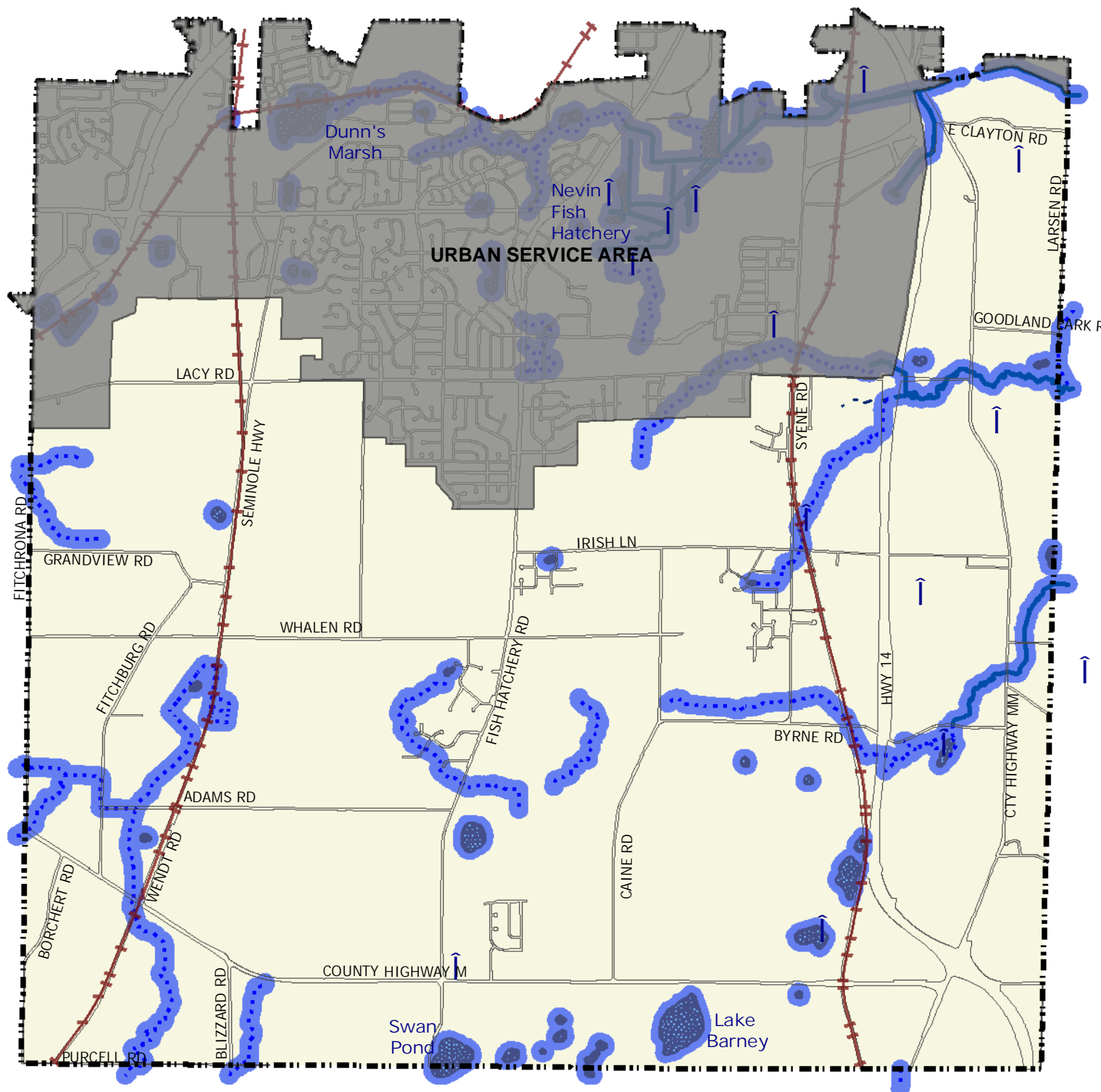

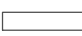









Water Resources



Legend

- | | |
|---|---|
|  Open Water |  Right of Way |
|  300-Ft Buffer |  City Limits |
|  Perennial Stream |  Railroad Corridor |
|  Intermittent Stream | |
|  Non-Navigable Drainage | |
|  Spring | |

0 1,250 2,500 5,000 Feet

Data Sources:
 Capital Area Regional Planning Commission,
 February 2008 (Dataset based on 1990 aerial
 photography interpreted by Dane County RPC).
 Macholl (WI Wildlife Federation), 2007. Natural
 Resources Consulting, 2008.

Map prepared by Fitchburg Parks Department,
 June 2009