

# Syene Road Reconstruction Project



March 8, 2023



# Project Team

- Tim Voelker
  - Fitchburg Director of Public Works/City Engineer
- Samantha Herheim
  - KL Engineering, Inc, Consultant Project Manager
- Kevin Wehner
  - KL Engineering, Inc, Consultant Traffic Engineer
- Lorraine Betzel
  - WisDOT Local Program Project Manager
  - West Clayton to McCoy Road segment

# Presentation Agenda

- Public Engagement Process and Goals
- Project Location
- Project Purpose & Need
- Project Background
- Phase 1 Construction
- Improvements
- Real Estate
- Construction Detour
- Construction Cost Estimates
- Project Schedule
- How to Get Involved

# Meeting Logistics

- Respect your neighbors' time and perspectives
- Focus input on the Syene Road Reconstruction project
- Ask clarifying questions throughout the presentation
- Save other questions for the Question and Answer time at the end – we may answer your question during the presentation

# Public Engagement Process and Goals

- Process

- This is the third public meeting
- First public meeting February 25, 2021
  - Data gathering at concept level for Syene Rd from Aurora Ave to McCoy Rd
- Small group meetings with residents, stakeholders, and city staff May 2021 – August 2021
- City review and approval of cross section elements August 2021
- Second public meeting September 29, 2021
  - Northern portion postponed
  - Meeting focused on Aurora Ave to W Clayton Rd



# Public Engagement Process and Goals

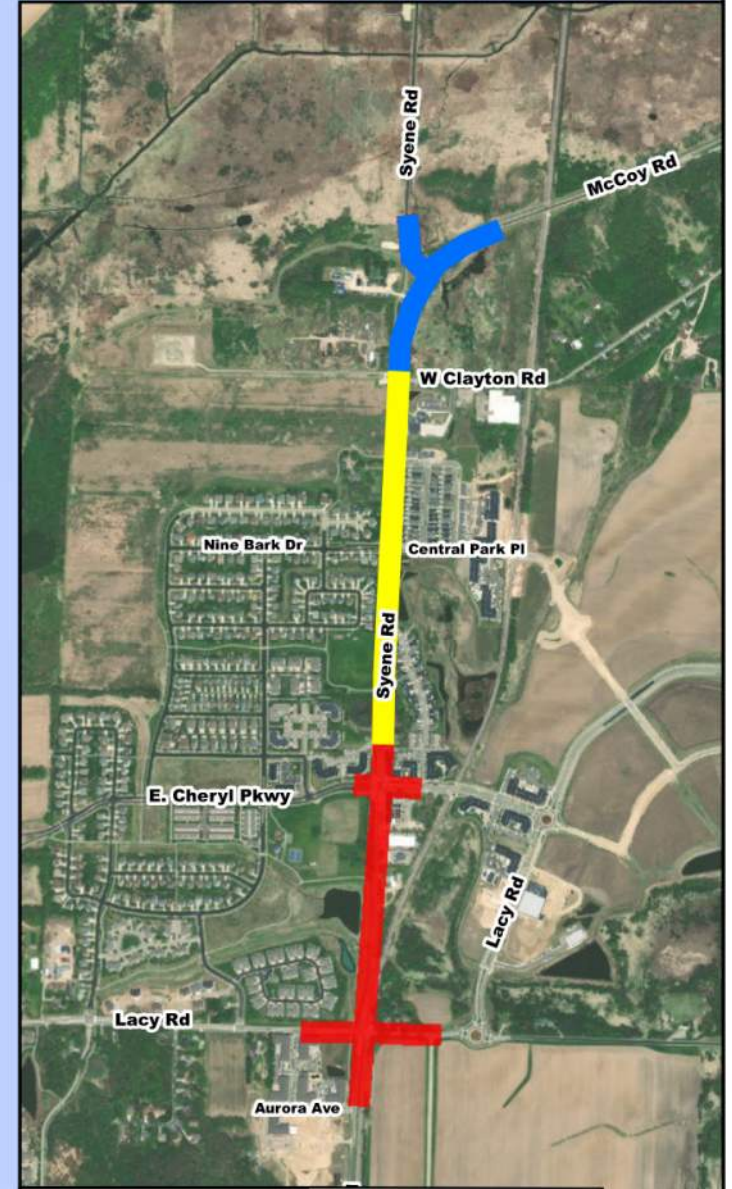
- Goals
  - Update on Phase 1 construction (Aurora Ave to East Cheryl Pkwy)
  - Update on Phase 2 design (East Cheryl Pkwy to McCoy Rd)
  - Report back on intersection design for the Syene Road & Ninebark / Central Park intersection
  - Report back on intersection design for the Syene Road & McCoy Road intersection
    - Discuss intersection related impacts to Dane County owned parcels and the Capital City Trail; Section 4(f) resources
  - Discuss schedule and next steps

# Project Location

- Aurora Ave to East Cheryl Pkwy:
  - Under construction
- East Cheryl Pkwy to West Clayton Rd:
  - Local project
  - 2024 construction
- West Clayton Rd to McCoy Rd:
  - WisDOT HSIP project
  - 2024 construction

## Syene Road Reconstruction - Project Location

Syene Road Reconstruction  
McCoy Road to Aurora Avenue  
City of Fitchburg



- Project Limits - Phase 1 (2022 & 2023 construction)
- Project Limits - Phase 2 local (2024 construction)
- Project Limits - Phase 2 WisDOT (2024 construction)

# Project Purpose & Need

- Rural corridor transitioning to mixed-use
- Pavement condition
- Intersection functionality



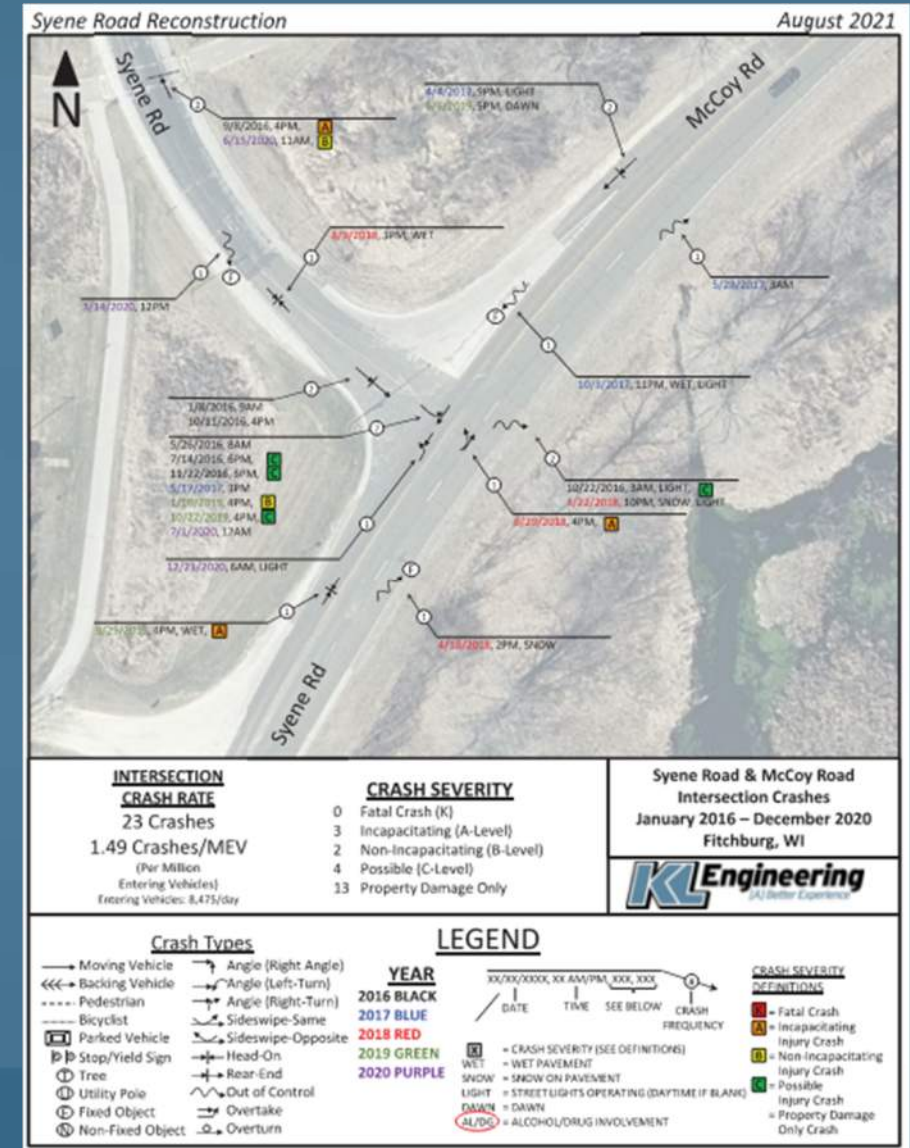
2000 Dane Co Aerial Imagery



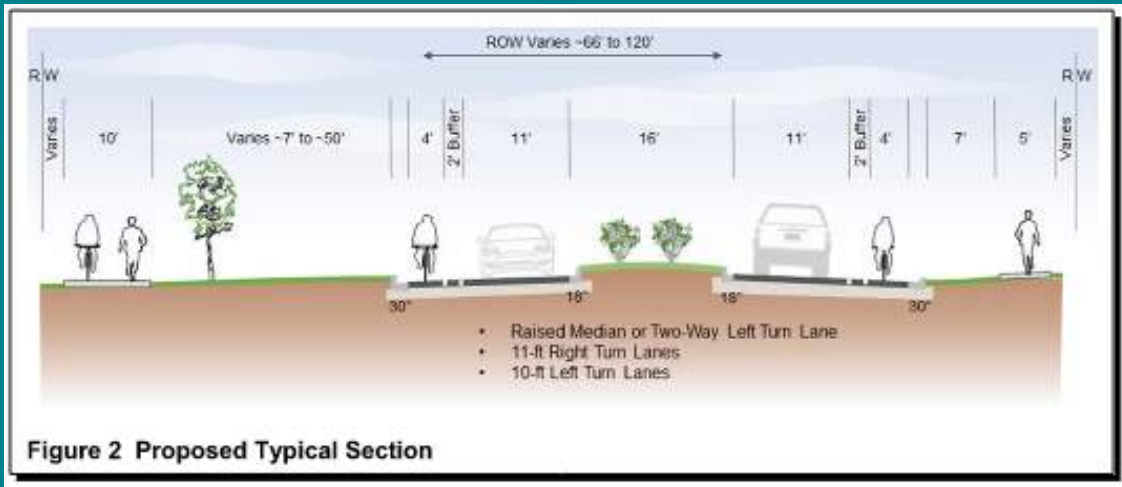
2020 Dane Co Aerial Imagery

# Project Purpose & Need

- Syene Road and McCoy Road intersection
  - Delay for southbound to eastbound traffic
  - Crash frequency
  - Capital City Trail crossing safety



# Project Background



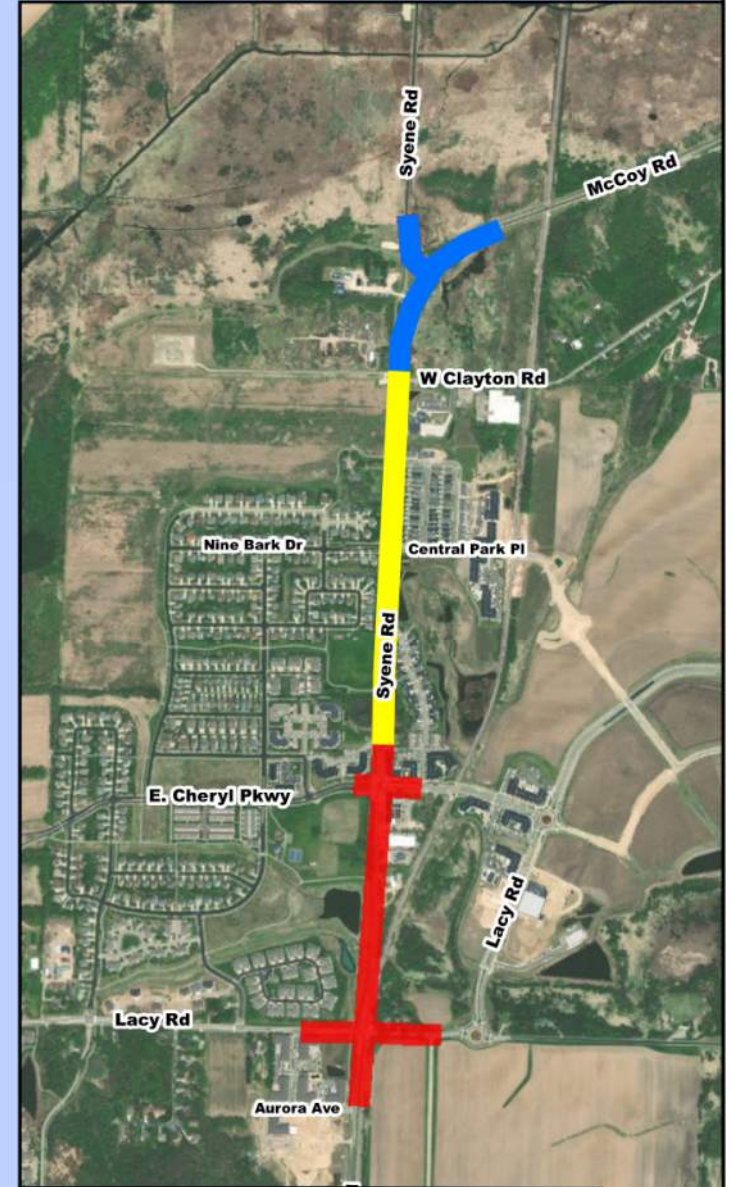
- Development has changed the character of the corridor
- Roadway not updated with neighborhood developments
- 2019 Study to determine how to reconstruct Syene Road to better accommodate the mixed-use development in the area
- Study available on project website

# Project Background

- Design started in late 2020
  - Additional concepts and alternatives explored
  - Geotechnical findings increased cost estimates
- Project split into phases in 2021
  - Allowed additional time for public engagement with city staff
  - Northern portion received federal funding
  - Middle portion applied for federal funding but was not successful
- Phase 1 construction began in fall 2022

## Syene Road Reconstruction - Project Location

Syene Road Reconstruction  
McCoy Road to Aurora Avenue  
City of Fitchburg



- Project Limits - Phase 1 (2022 & 2023 construction)
- Project Limits - Phase 2 local (2024 construction)
- Project Limits - Phase 2 WisDOT (2024 construction)

# Phase 1 Construction (Aurora Ave to East Cheryl Pkwy)

- Began fall 2022
- Currently shut down for winter (mostly)
  - Some stormwater work continues
  - Some private utility work continues
- Construction start up in the spring
  - Tentatively April 1
  - Road closed with detour
    - Either Lacy Rd or East Cheryl Pkwy will remain open (not closed at same time)
  - Completion mid-summer

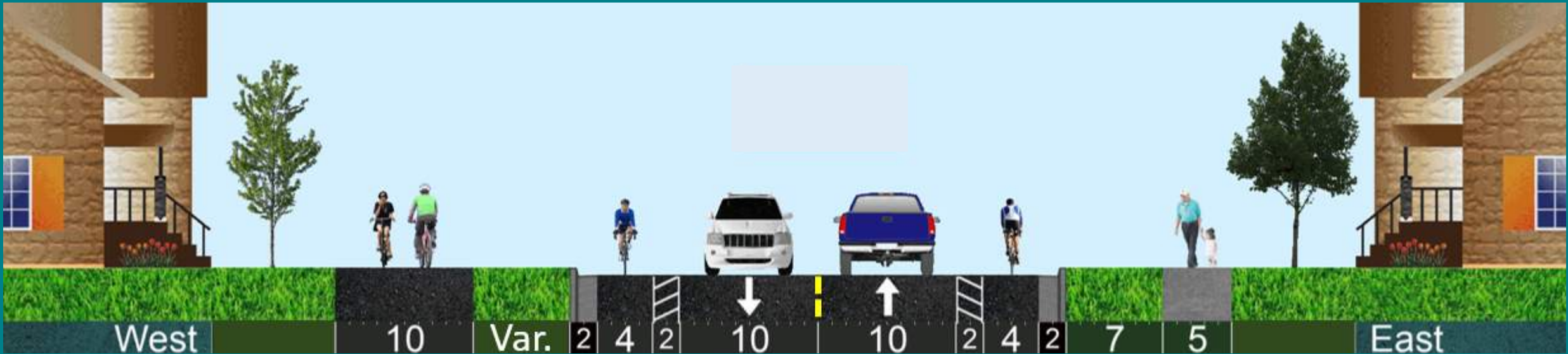
# Improvements Corridor



- Sanitary and watermain adjustments
- Watermain extension near W Clayton
- Stormwater management

- Lighting at intersections and select locations
- Speed reduction measures
- Vertical alignment improvements

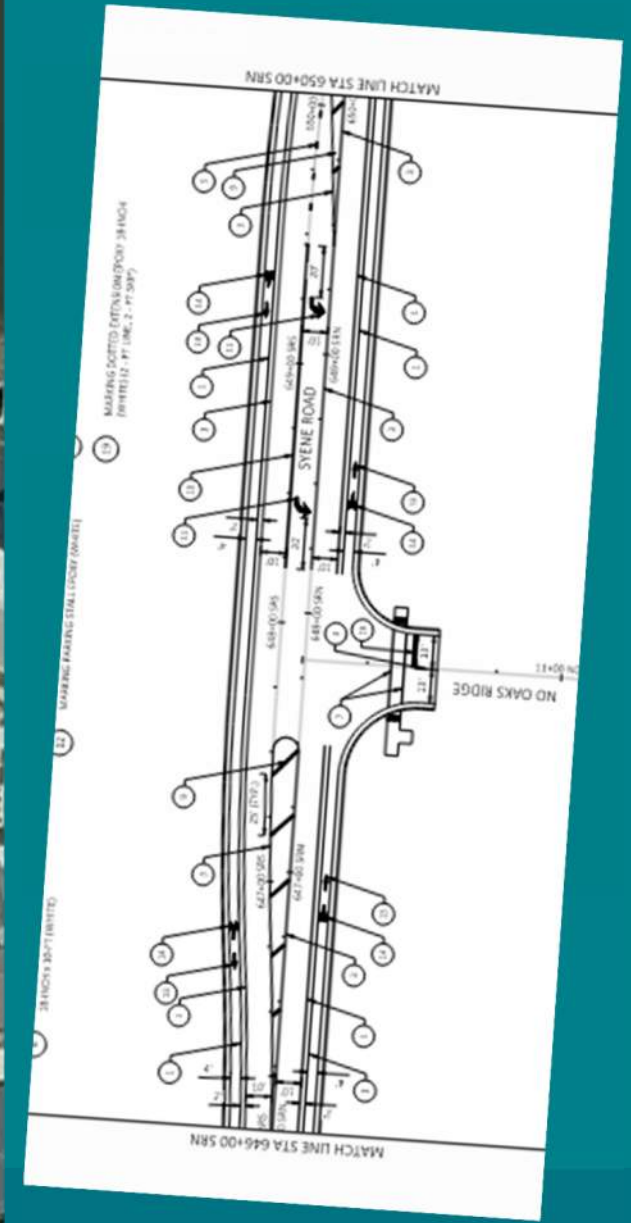
# Improvements Corridor



- 10' travel lanes
- 6' bicycle lanes (2' buffer)
- Painted and raised medians approaching intersections
- Curb and gutter
- Sidewalk on east
- Path on west
- Curb ramp improvements

# Improvements Intersections

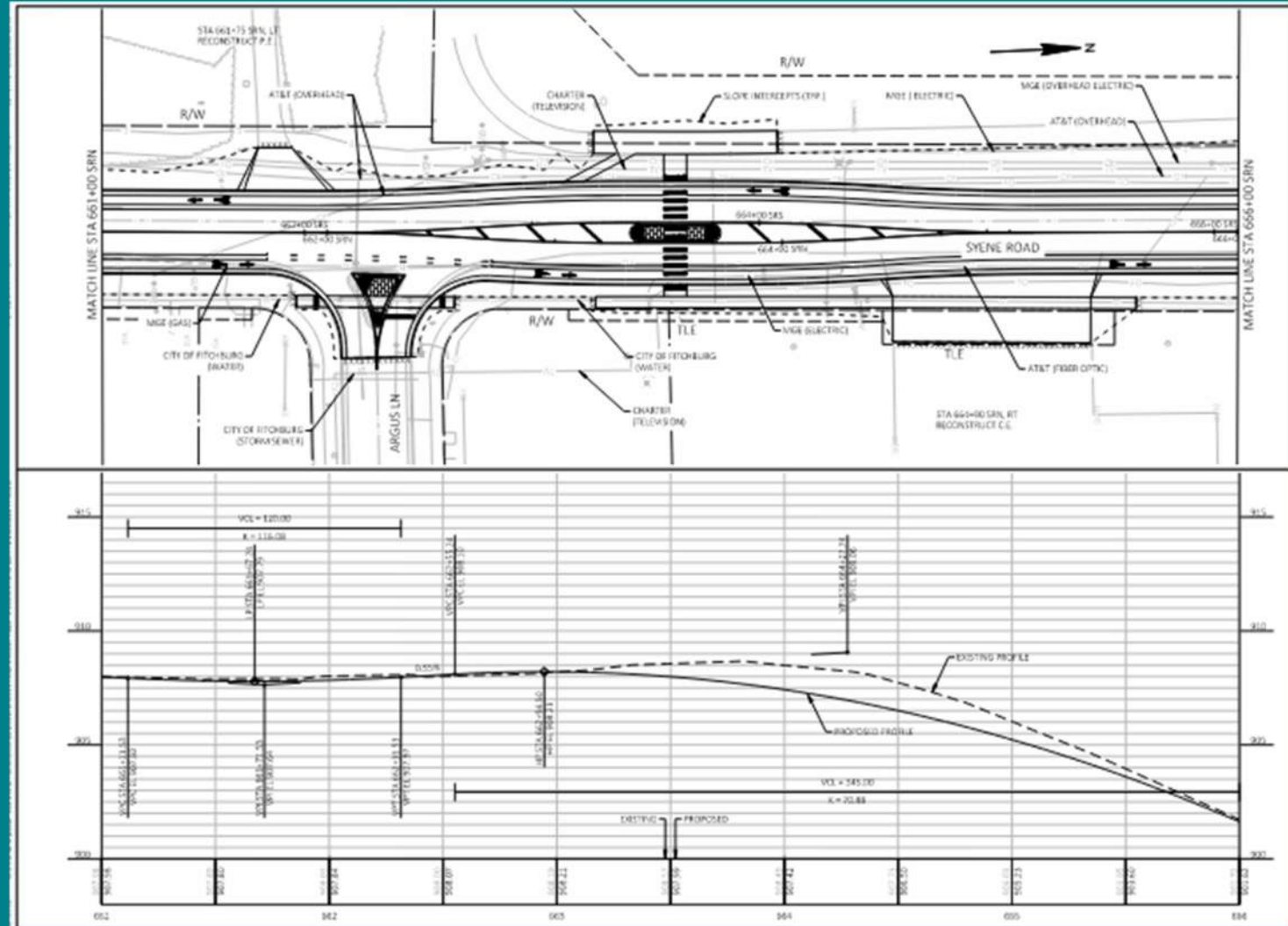
- No Oaks Ridge
  - Southbound left turn lane proposed





# Improvements Intersections

- Argus Lane
  - Remains as right in right out
  - Lowering high point on Syene Road about 1'
- West Clayton Road
  - No change



# Improvements Intersections

- McCoy Road
  - Currently stop sign on Syene Rd
  - Realigned and signalized intersection proposed
  - Capital City Trail crossing will be at signal
  - Intersection similar to CTH MM & McCoy



# Improvements Intersections

- McCoy Road (continued)
  - Unnamed north-south trail realignment
  - Boardwalk removal
  - Trailhead driveway realignment to signal



# Improvements Intersections

- McCoy Road (continued)
  - Section 4(f) and 6(f) impacts
    - Dane County Parcels – temporary and permanent real estate acquisition
    - Capital City Trail will be staged during construction to allow continued use
  - Wetland impacts



# Improvements

## Midblock Crossings

- Existing paths and sidewalks along much of roadway
- Existing Marked Crosswalks
  - ~0.4 miles between crosswalks at the E Cheryl Pkwy & Ninebark/Central Park intersections
  - No marked crosswalks north of Ninebark/Central Park
- Considering midblock crossings with Rectangular Rapid Flashing Beacons to address these long distances between intersection crosswalks



Mid-block crossing example on Sub-Zero Pkwy

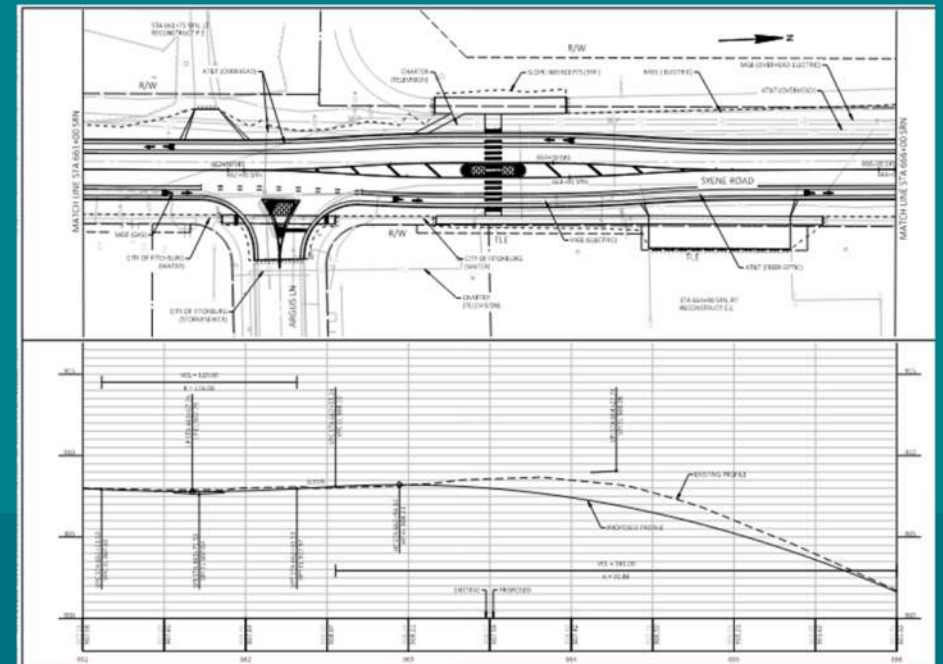
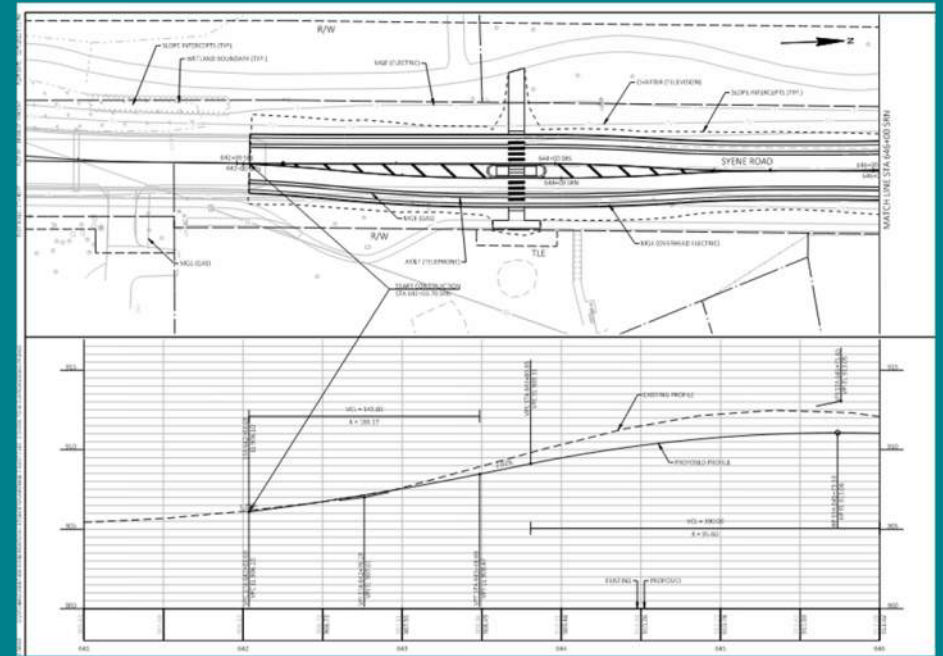


Rectangular Rapid Flashing Beacon

# Improvements

## Midblock Crossings

- At Nannyberry Park
    - Connect path on west with sidewalk on east
  - North of Argus Lane
    - Connect path on west with sidewalk on east
- ❖ Requesting feedback on inclusion of these midblock crossings





# Improvements

## Speed Reduction Measures

- Curb and gutter
- Pavement marking
- Roundabout
- Driver feedback / speed indicator signs
- Horizontal deflections
- Midblock Crossings (if included)

# Real Estate

- Temporary Limited Easements from some properties
  - Grading for sidewalk or path replacement

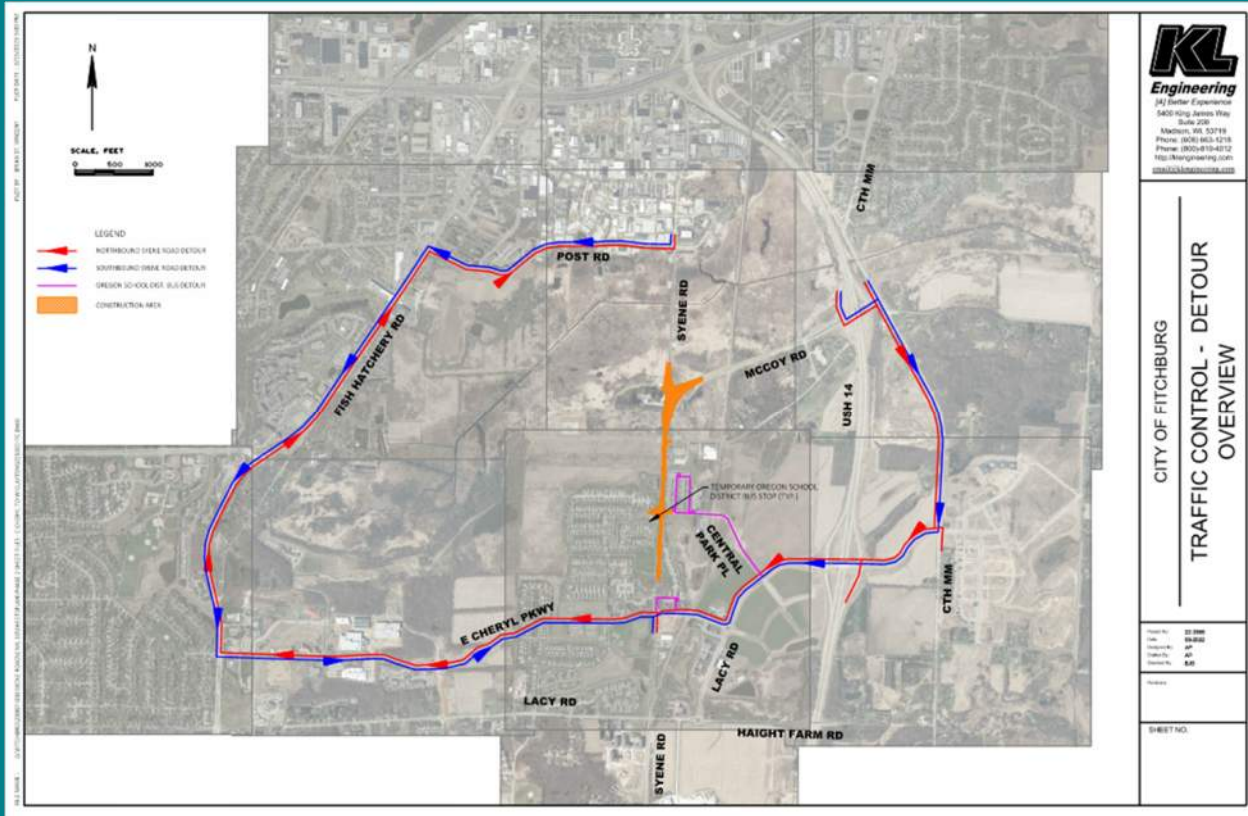


# Real Estate

- Temporary Limited Easements from some properties
  - Grading
- Permanent acquisition from Dane County
  - Small area for Syene Road and McCoy Road intersection realignment
  - Will include “swap” to give some existing right of way area to Dane County



# Construction Detour



- Road closed
- Signed detour
- Access maintained for fire station, business, and residences on Syene Rd
- School bus stops, garbage pickup & mail delivery will require coordination

# Construction Cost Estimate

- East Cheryl Parkway to West Clayton Road
  - \$3.2 million



# Construction Cost Estimate

- West Clayton Road to McCoy Road
  - \$2.9 million
    - Federal Funding of \$1.7 million



# Project Schedule

- Aurora Ave to East Cheryl Pkwy
  - Construction start-up anticipated April 1
  - Completion mid-summer



# Project Schedule



- East Cheryl Pkwy to West Clayton Rd
  - Real estate acquisition late spring 2023
  - Final plans end of 2023
  - Construction 2024

# Project Schedule

- West Clayton Rd to McCoy Rd
  - Environmental Document: April 2023
  - Design Study Report: May 2023
  - Real Estate Plat: May 2023
  - Real Estate Acquisition: June 2023 – October 2023
  - Draft PS&E: September 2023
  - Final PS&E: November 1, 2023
  - WisDOT LET: February 13, 2024
  - Construction 2024



# How You Can Get Involved



- **Sign up for NotifyMe:** <https://www.fitchburgwi.gov/list.aspx>
- Project updates will be added to the website:  
<https://www.fitchburgwi.gov/2669/Syene-Road-McCoy-to-Aurora>
- **Reach out to the design team**

Tim Voelker

City of Fitchburg, Director of Public Works/City Engineer

[Tim.Voelker@fitchburgwi.gov](mailto:Tim.Voelker@fitchburgwi.gov)

(608) 270-4261

Samantha Herheim

KL Engineering, Inc.

[sherheim@klengineering.com](mailto:sherheim@klengineering.com)

(608) 663-1218

➤ Comments requested by 4/5/2023

Any  
Questions