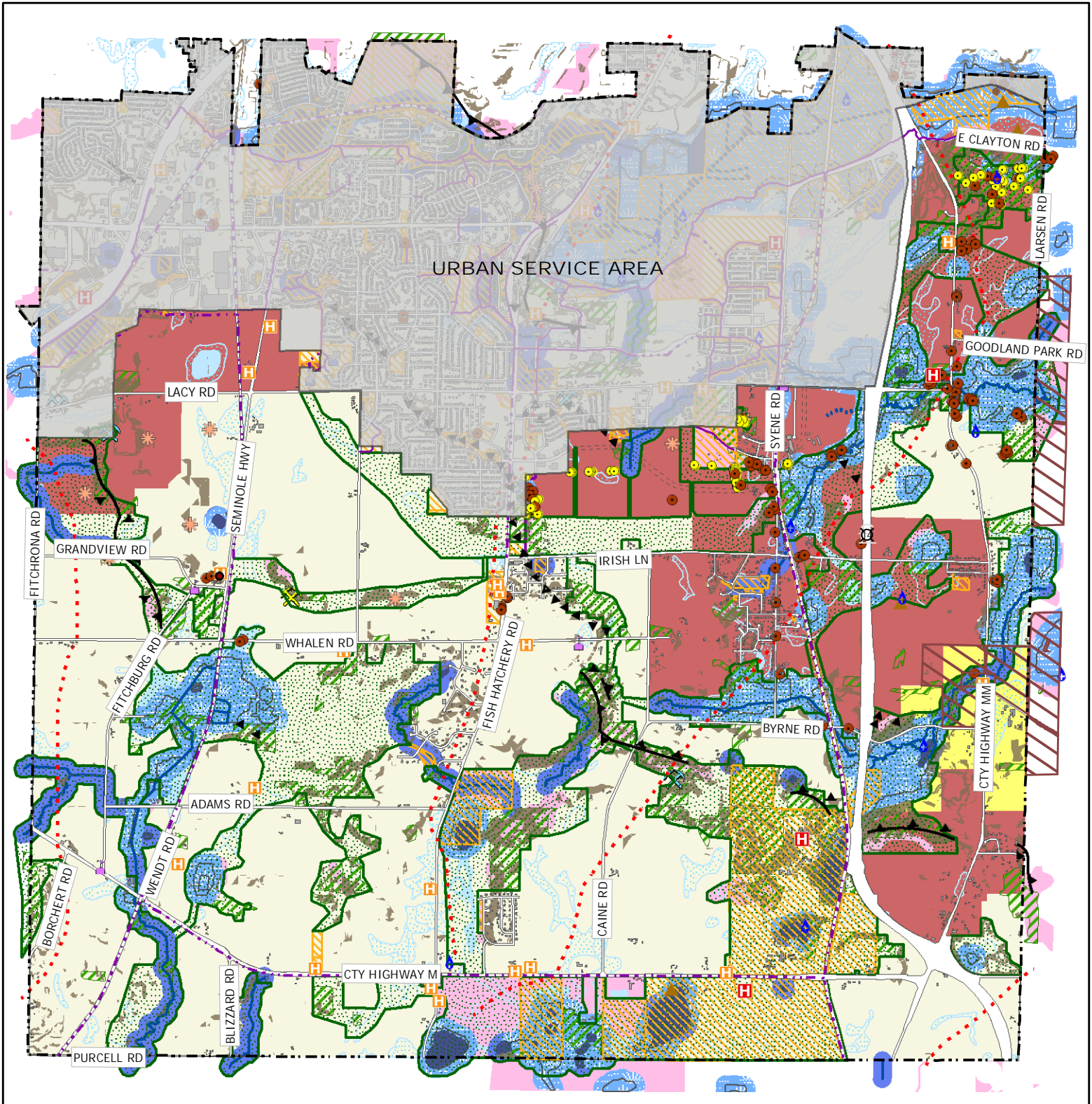


Conceptual Park & Open Space Proposal

Recommended Boundaries & Resource Overlay



Environmental Resources		Cultural/Historical Resources		Proposed Park & Open Space	<p>All information is believed to be accurate but is not guaranteed to be without error. This map is intended for general reference use and not intended for detailed site-specific analysis.</p> <p>Data Sources: Scott, 1976; Allison, 2001; Fitchburg Parks Dept., 2007, 2008; Dane County LIC, 2004, 2005; WDNR, 1986, 2004; Dane County & NRCS, 2005; Machol (WI Wildlife Federation), 2007; Warner, 1873; Brown & W.W. Hixon & Co., 1924 (WI Historical Society); Fitchburg Landmarks Preservation Commission, 1999; Fitchburg Bicentennial Committee, 1976; Madison MPO, 2006; DCRPC, 2006; Kinney, 1993; Fitchburg Planning Dept., 2004, 2007; CARPC, 2006, 2008; NRC, 2007, 2008; Wisconsin Geological & Natural History Survey, 1997; Dane County CAPD, 2006; Fitchburg Public Works, 2007; Fitchburg Citizens, 2008.</p> <p>Parks, Recreation & Forestry Department December 23, 2009</p>
Dane County Env. Corridor Wetland w/ 300-ft Buffer Possible Hydric Inclusion Hydric Soils Open Water 300-ft Water Buffer Navigable Stream/Waterway	Public Land Forest +12% Slopes Small Moraine Medium Moraine Spring Specimen Tree	Indian Trail Mound Group Indian Camp Building Footprint Scenic Resource Heritage Tree	Historic Schoolhouse Current School Historic Lead Mine Historic Stone Quarry Historic Building/Site National Register of Historic Places	Conservation Easement Urban Growth Boundary (50yr) Study Area Right of Way City Limits Existing Recreational Trail Proposed Recreational Trail Proposed Right of Way	