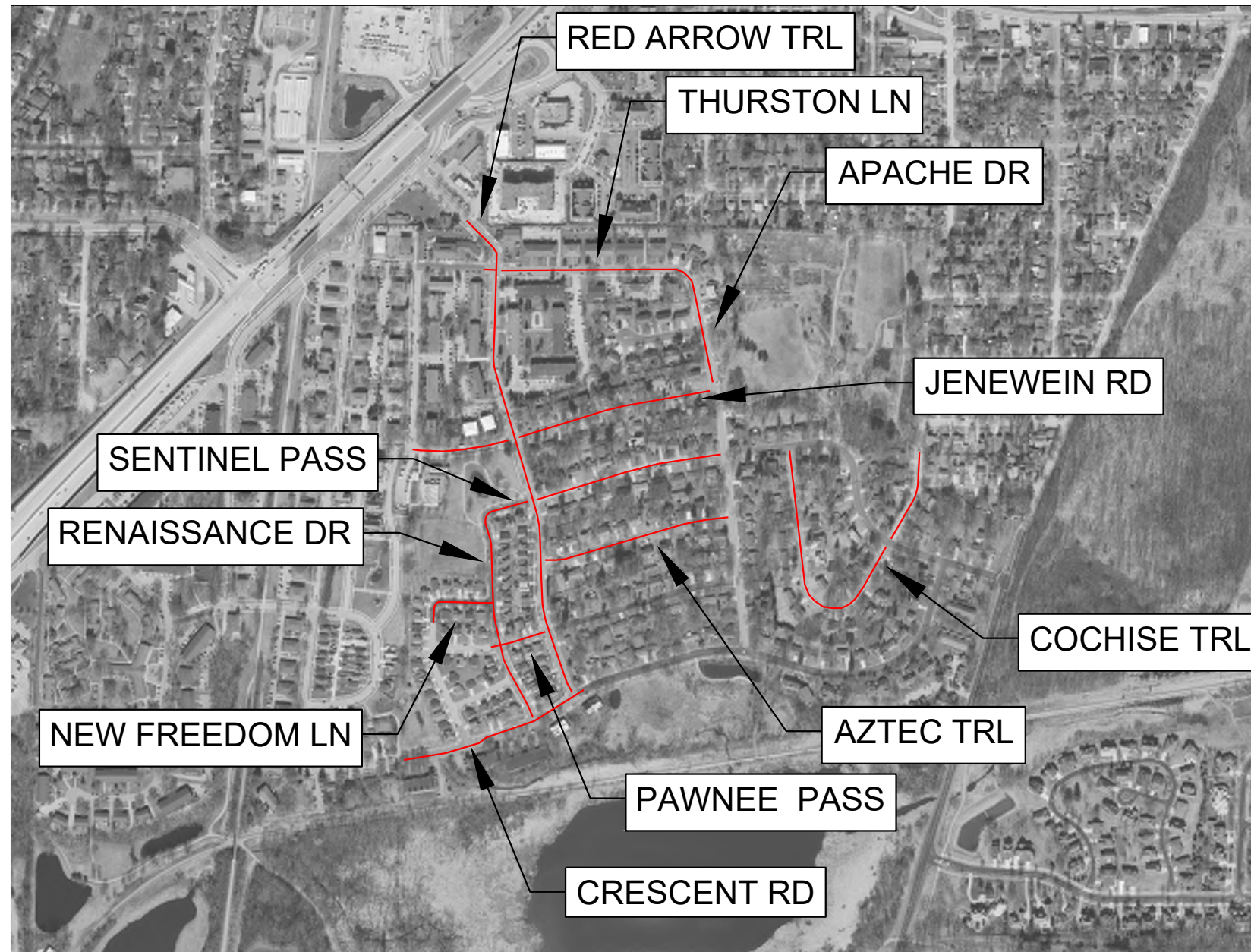


2025 ARPA STREET RESURFACING

CITY OF FITCHBURG, WISCONSIN



SHEET NO.	SHEET DESCRIPTION
0	TITLE SHEET
1	GENERAL NOTES
2	THURSTON LN
3	APACHE DR
4	JENEWEIN RD
5	EAST SENTINEL PASS
6	WEST SENTINEL PASS
7	AZTEC TRL
8	CRESCENT RD
9	COCHISE TRL
10	RED ARROW TRL
11	RENAISSANCE DR
12	NEW FREEDOM LN
13	PAWNEE PASS



REV A CHANGES ARE DENOTED BY RED CLOUD. CURB SURVEY ADDED AND DENOTED BY BLUE LINES.

2025 ARPA STREET RESURFACING
TITLE SHEET

DRAWN BY: SRH
DATE: 10/11/2024
REV A 01/21/2025

SHEET NO.:
0

PROJECT CONTACTS

ZAC LAUNDRIE
ROW ENGINEER
PHONE: 608-270-4263
EMAIL: ZAC.LAUNDRIE@FITCHBURGWI.GOV

SAM HAGEMAN
ENGINEERING TECHNICIAN
PHONE: 608-206-3109
EMAIL: SAMANTHA.HAGEMAN@FITCHBURGWI.GOV

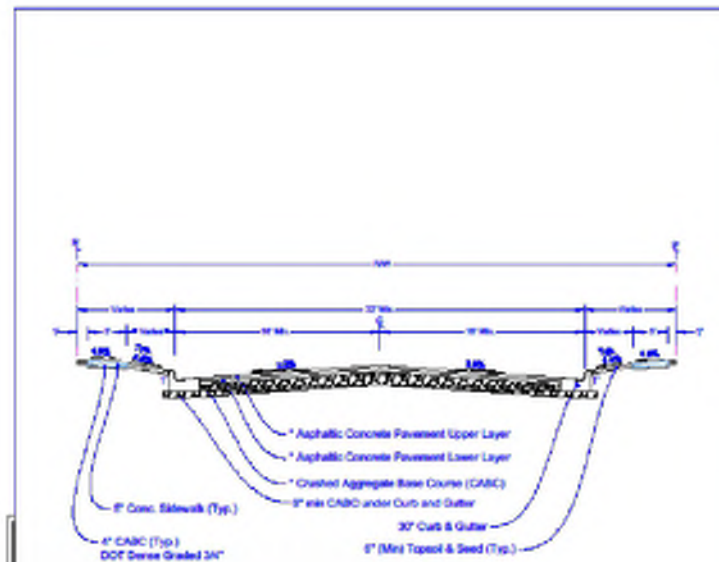
ROSS KAHLER
SENIOR TRANSPORTATION ENGINEER
PHONE: 608-270-4266
EMAIL: ROSS.KAHLER@FITCHBURGWI.GOV

GENERAL NOTES

1. ALL WORK SHALL BE COMPLETED IN ACCORDANCE WITH THE LATEST EDITIONS OF THE SPECIAL PROVISIONS FOR THIS PROJECT, THE LATEST EDITION OF THE "CITY OF FITCHBURG STANDARD SPECIFICATIONS FOR PUBLIC WORKS CONSTRUCTION", AND THE LATEST EDITION OF THE STATE OF WISCONSIN "STANDARD SPECIFICATIONS FOR HIGHWAY AND STRUCTURE CONSTRUCTION".
2. ALL STREET DIMENSIONS ARE MEASURED TO THE EDGE OF PAVEMENT UNLESS SPECIFIED ELSEWHERE.
3. MANHOLE CASTINGS WITHIN THE PAVEMENT ARE TO BE SET TO 1/4" BELOW ASPHALT SURFACE GRADE.
4. RECONSTRUCTED MANHOLES SHALL HAVE BETWEEN 3" AND 9" OF ADJUSTING RINGS.
5. PULVERIZED MATERIAL SHALL BE REMOVED ON ALL STREETS.
6. ALL PAVEMENT MARKING SHALL MATCH EXISTING PAVEMENT MARKING UNLESS OTHERWISE SPECIFIED BY ENGINEER.

EROSION CONTROL REQUIREMENTS

1. ALL EROSION AND SEDIMENT CONTROL PRACTICES SHALL BE IMPLEMENTED IN ACCORDANCE WITH THE CURRENT WISCONSIN DEPARTMENT OF NATURAL RESOURCES (WDNR) EROSION AND SEDIMENT CONTROL TECHNICAL STANDARDS (DNR.W.GOV).
2. EROSION AND SEDIMENT CONTROL MEASURES NOTED ON THE PLANS SHALL BE INSTALLED PRIOR TO SITE DISTURBANCE.
3. THE CITY OF FITCHBURG RESERVES THE RIGHT TO REQUIRE THE CONTRACTOR TO IMPLEMENT ADDITIONAL EROSION CONTROL MEASURES AS NECESSARY.
4. EROSION AND SEDIMENT CONTROL MEASURES SHALL BE INSPECTED ONCE PER WEEK AND FOLLOWING EACH RAINFALL EVENT OF 1/2" OR GREATER INSPECTION REPORTING EVENTS SHALL BE IN ACCORDANCE WITH THE CITY OF FITCHBURG REQUIREMENTS AND SHALL BE THE RESPONSIBILITY OF THE CONTRACTOR.
5. ALL SLOPES EXCEEDING 20% (5:1) SHALL BE STABILIZED WITH A CLASS 1, TYPE A URBAN EROSION MAT.
6. DUST CONTROL SHALL BE MITIGATED IN ACCORDANCE WITH WDNR TECHNICAL STANDARD 1068.
7. TRACKED SOIL FROM THE SITE TO STREET SHALL BE REMOVED AS NEEDED AT THE DISCRETION OF THE CITY ENGINEER AND AT A MINIMUM OF ONCE AT THE END OF EACH WORK DAY.
8. ALL DISTURBED AREAS SHALL BE SEEDED AND MULCHED WITHIN 7 DAYS OF FINAL GRADING.
9. INSTALL PERIMETER CONTROLS ON THE DOWN SLOPE OF STOCKPILES AND PROVIDE TEMPORARY SEEDING ON STOCKPILES AND DISTURBED AREAS THAT ARE TO REMAIN UNWORKED FOR MORE THAN 7 DAYS.
10. ANY AREAS WHERE CONSTRUCTION HAS TEMPORARILY CEASED AND WILL NOT RESUME FOR MORE THAN 14 DAYS SHALL BE TEMPORARILY STABILIZED.



NOTE:
ALL STREETS IN THIS PROJECT ARE RESIDENTIAL

* City of Fitchburg Minimum New Pavement Design

Type	Subgrade	Crushed Aggregate Base Course	Asphalt Concrete Pavement	Asphalt
Residential	4.0"	4.0"	2.0" (Upper Layer) / 2.0" (Lower Layer)	1.5"
Collector	4.0"	4.0"	2.0" (Upper Layer) / 2.0" (Lower Layer)	1.5"
Arterial	4.0"	4.0"	2.0" (Upper Layer) / 2.0" (Lower Layer)	1.5"

*Note: All outside-see bulbs shall increase width and surface by 10"

THE CITY OF Fitchburg

STREET TYPES

STANDARD DETAIL DRAWING 5.01

DATE: 2/10/21
SHEET NO.: 1



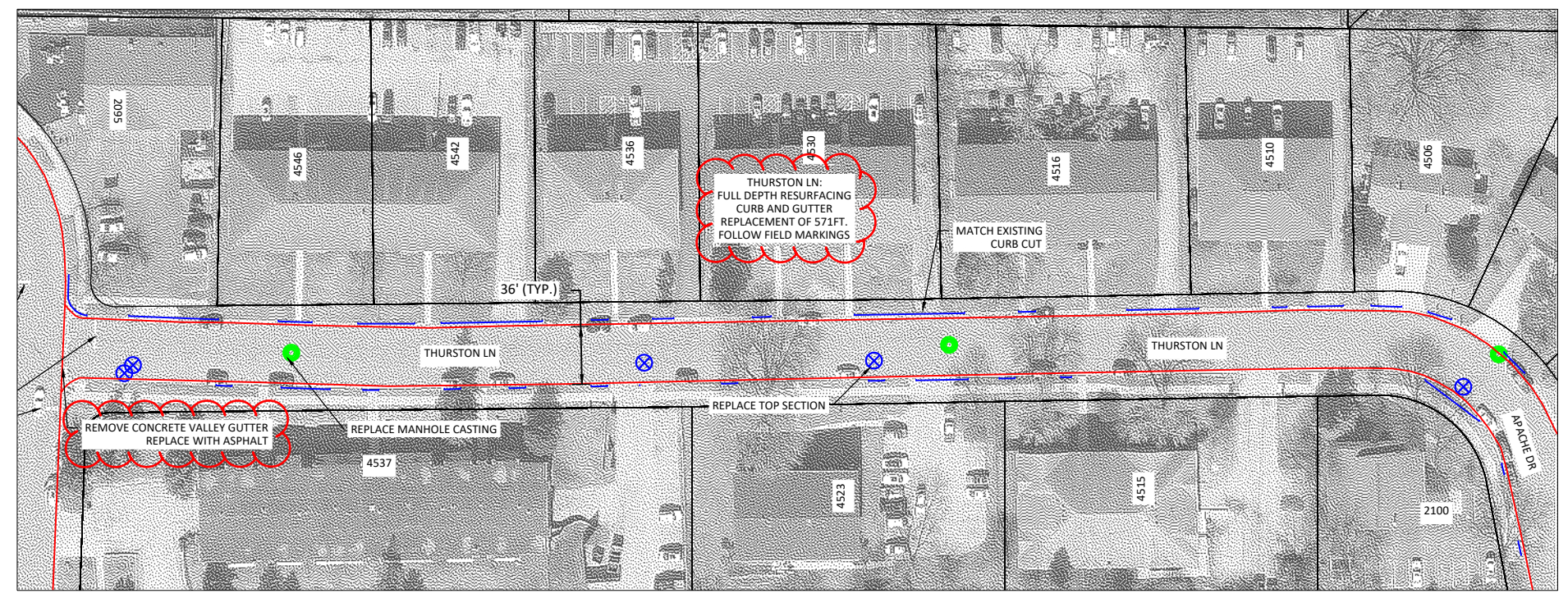
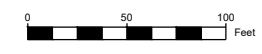
2025 ARPA STREET RESURFACING

GENERAL NOTES

DRAWN BY: SRH
DATE: 10/11/2024
REV A 01/21/2025

SHEET NO.: 1

I:\PUBLIC WORKS\ENGINEERING\TRANS\PROJ\2025 ARPA STREET RESURFACING\DWG\GENERAL NOTES.DWG



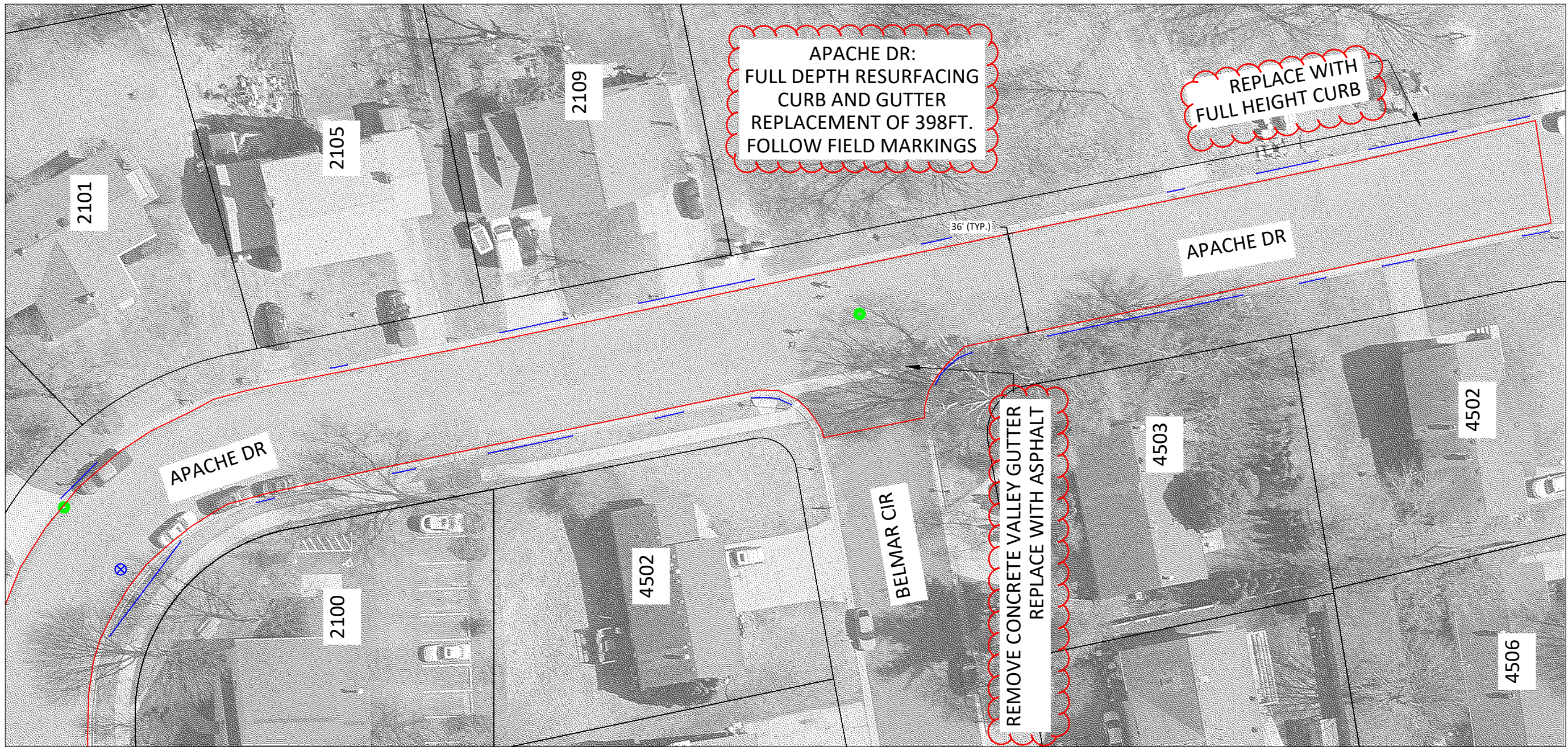
- LEGEND**
- ⊗ ADJUST WATER VALVE
 - ⊙ REPLACE ADJUSTING RINGS - SANITARY
 - ⊙ REPLACE ADJUSTING RINGS - STORM
 - ⊗ ADJUST WATER VALVE BOX
 - ⊗ INLET PROTECTION
 - ⊗ ADJUST STORM INLET
 - ⊗ REPLACE ADJUSTING RINGS - INLET
 - XX LF OF 30" C&G REMOVE AND REPLACE

NOTE: SAWCUT REQ'D WHEN MATCHING INTO EXISTING PAVEMENT (INCIDENTAL TO CONTRACT). ENGINEER MUST APPROVE SAWCUT LOCATION IN FIELD PRIOR TO ANY CUTTING.

2025 ARPA STREET RESURFACING
THURSTON LN

DRAWN BY: SRH
DATE: 10/11/2024
REV A 01/21/2025

SHEET NO.:
2



- LEGEND**
- ⊗ ADJUST WATER VALVE
 - REPLACE ADJUSTING RINGS - SANITARY
 - REPLACE ADJUSTING RINGS - STORM
 - ⊗ ADJUST WATER VALVE BOX
 - X INLET PROTECTION
 - ADJUST STORM INLET
 - REPLACE ADJUSTING RINGS - INLET
 - XX LF OF 30" C&G REMOVE AND REPLACE

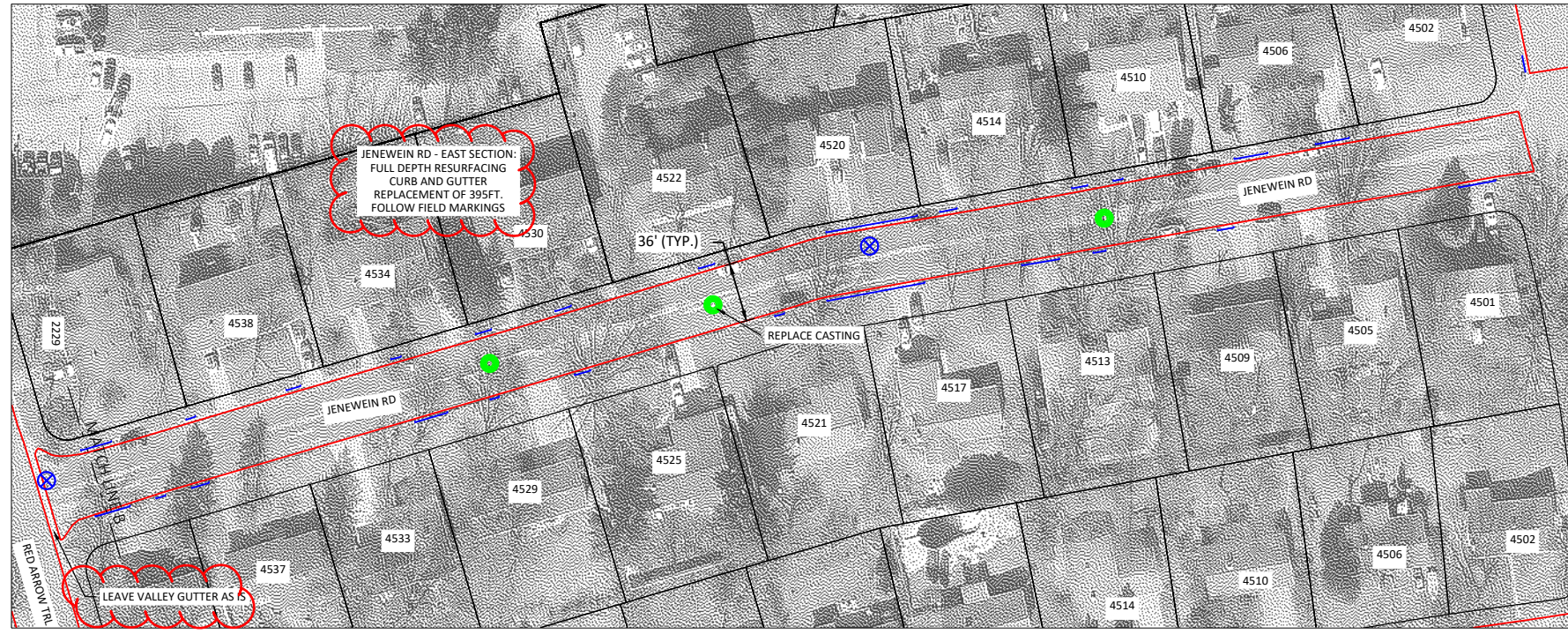
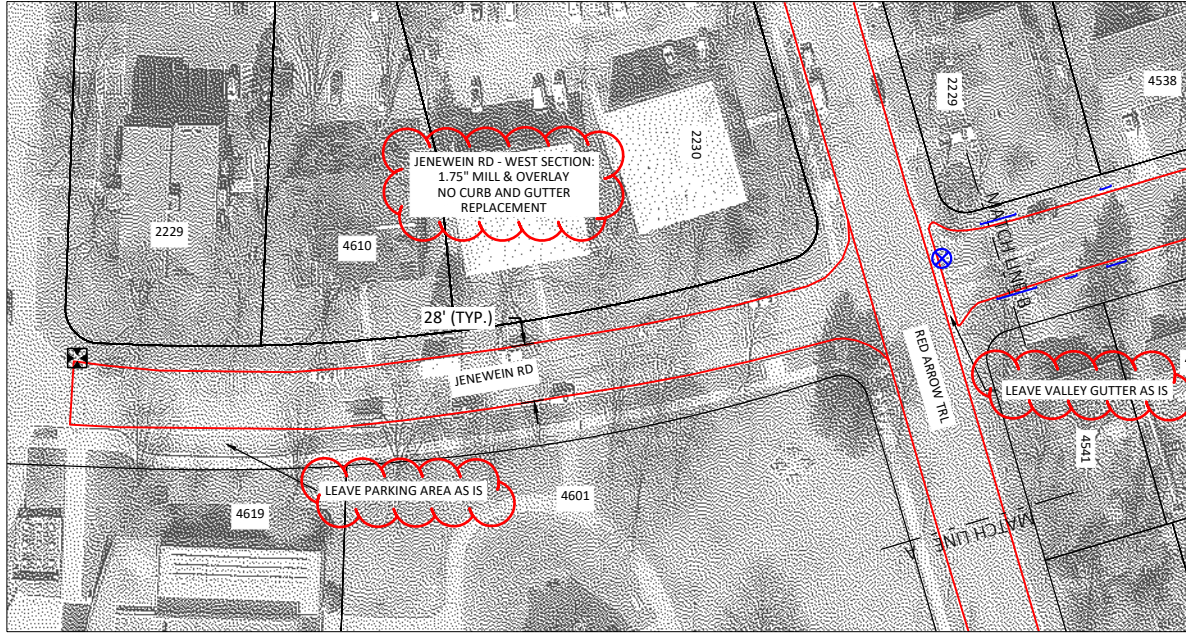
NOTE: SAWCUT REQ'D WHEN MATCHING INTO EXISTING PAVEMENT (INCIDENTAL TO CONTRACT). ENGINEER MUST APPROVE SAWCUT LOCATION IN FIELD PRIOR TO ANY CUTTING.



**2025 ARPA STREET RESURFACING
APACHE DR**

DRAWN BY: SRH
DATE: 10/11/2024
REV A 01/21/2025

SHEET NO.:
3



- LEGEND**
- ⊗ ADJUST WATER VALVE
 - REPLACE ADJUSTING RINGS - SANITARY
 - REPLACE ADJUSTING RINGS - STORM
 - ⊗ ADJUST WATER VALVE BOX
 - ⊠ INLET PROTECTION
 - ADJUST STORM INLET
 - REPLACE ADJUSTING RINGS - INLET
 - XX LF OF 30" C&G REMOVE AND REPLACE

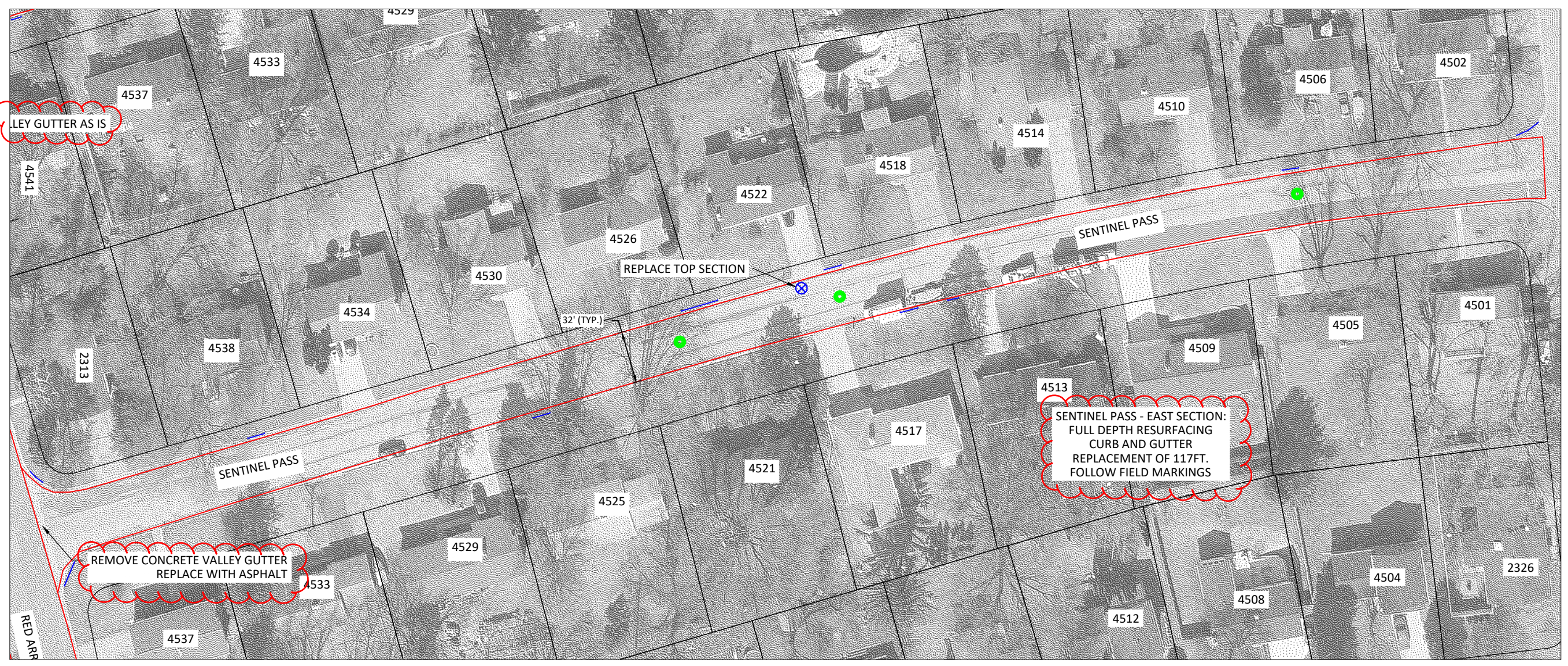
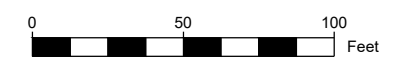
NOTE: SAWCUT REQ'D WHEN MATCHING INTO EXISTING PAVEMENT (INCIDENTAL TO CONTRACT). ENGINEER MUST APPROVE SAWCUT LOCATION IN FIELD PRIOR TO ANY CUTTING.



2025 ARPA STREET RESURFACING
JENEWEIN RD

DRAWN BY: SRH
 DATE: 10/11/2024
 REV A 01/21/2025

SHEET NO.:
4



- LEGEND**
- ADJUST WATER VALVE
 - REPLACE ADJUSTING RINGS - SANITARY
 - REPLACE ADJUSTING RINGS - STORM
 - ADJUST WATER VALVE BOX
 - INLET PROTECTION
 - ADJUST STORM INLET
 - REPLACE ADJUSTING RINGS - INLET
 - XX LF OF 30" C&G REMOVE AND REPLACE

NOTE: SAWCUT REQ'D WHEN MATCHING INTO EXISTING PAVEMENT (INCIDENTAL TO CONTRACT). ENGINEER MUST APPROVE SAWCUT LOCATION IN FIELD PRIOR TO ANY CUTTING.

PROJECT SCHEDULE NOTES:
 WATER MAIN WORK ON SENTINEL PASS TO BE COMPLETED BY OTHERS PRIOR TO PAVING. SOME ASPHALT WILL BE REMOVED, AND 16" OF AGGREGATE WILL BE PROVIDED TO MATCH EXISTING ELEVATION.

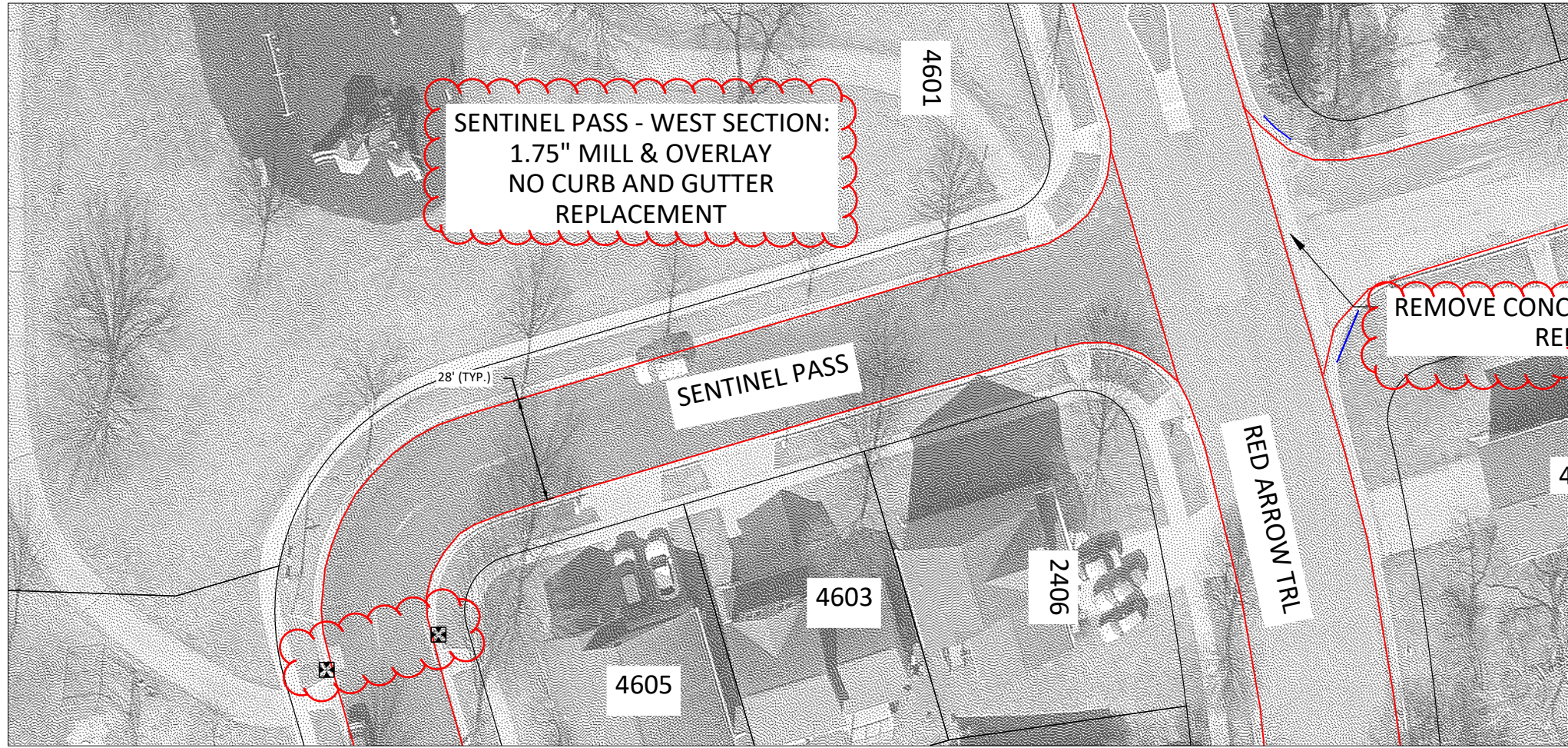
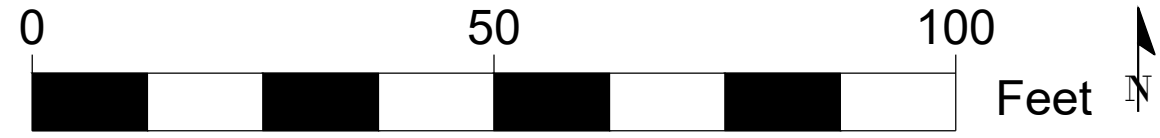
 RESURFACING WORK MAY NOT START UNTIL AFTER WATER MAIN WORK IS COMPLETE.



2025 ARPA STREET RESURFACING
 EAST SENTINEL PASS

DRAWN BY: SRH
 DATE: 10/11/2024
 REV A 01/21/2025

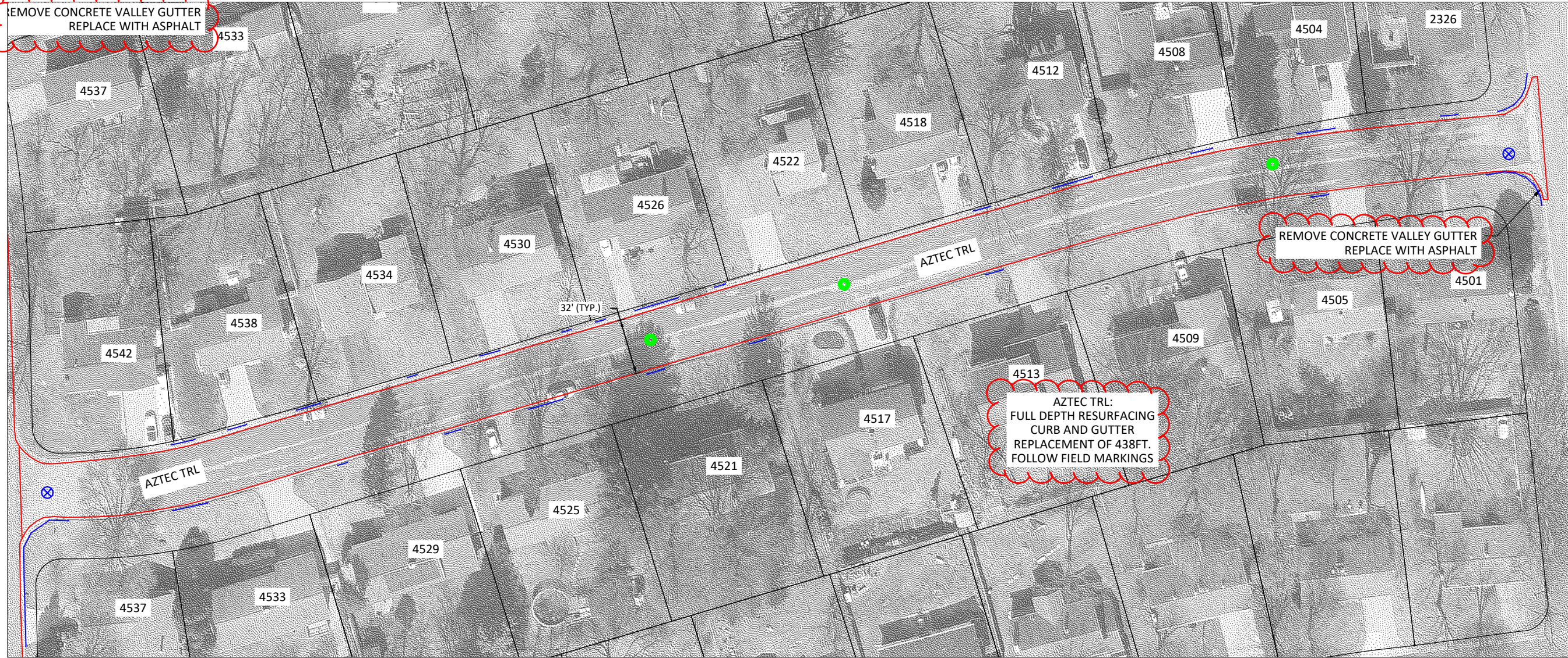
SHEET NO.:
5



- LEGEND**
- ⊕ ADJUST WATER VALVE
 - ⊕ REPLACE ADJUSTING RINGS - SANITARY
 - ⊕ REPLACE ADJUSTING RINGS - STORM
 - ⊗ ADJUST WATER VALVE BOX
 - ⊗ INLET PROTECTION
 - ADJUST STORM INLET
 - REPLACE ADJUSTING RINGS - INLET
 - XX LF OF 30" C&G REMOVE AND REPLACE

NOTE: SAWCUT REQ'D WHEN MATCHING INTO EXISTING PAVEMENT (INCIDENTAL TO CONTRACT). ENGINEER MUST APPROVE SAWCUT LOCATION IN FIELD PRIOR TO ANY CUTTING.

REMOVE CONCRETE VALLEY GUTTER
REPLACE WITH ASPHALT



REMOVE CONCRETE VALLEY GUTTER
REPLACE WITH ASPHALT

AZTEC TRL:
FULL DEPTH RESURFACING
CURB AND GUTTER
REPLACEMENT OF 438FT.
FOLLOW FIELD MARKINGS

- LEGEND**
- ⊗ ADJUST WATER VALVE
 - REPLACE ADJUSTING RINGS - SANITARY
 - REPLACE ADJUSTING RINGS - STORM
 - ⊗ ADJUST WATER VALVE BOX
 - ⊗ INLET PROTECTION
 - ADJUST STORM INLET
 - REPLACE ADJUSTING RINGS - INLET
 - XX LF OF 30" C&G REMOVE AND REPLACE

NOTE: SAWCUT REQ'D WHEN MATCHING INTO EXISTING PAVEMENT (INCIDENTAL TO CONTRACT). ENGINEER MUST APPROVE SAWCUT LOCATION IN FIELD PRIOR TO ANY CUTTING.

PROJECT SCHEDULE NOTES:
WATER MAIN WORK ON AZTEC TRL TO BE COMPLETED BY OTHERS PRIOR TO PAVING. SOME ASPHALT WILL BE REMOVED, AND 16" OF AGGREGATE WILL BE PROVIDED TO MATCH EXISTING ELEVATION.

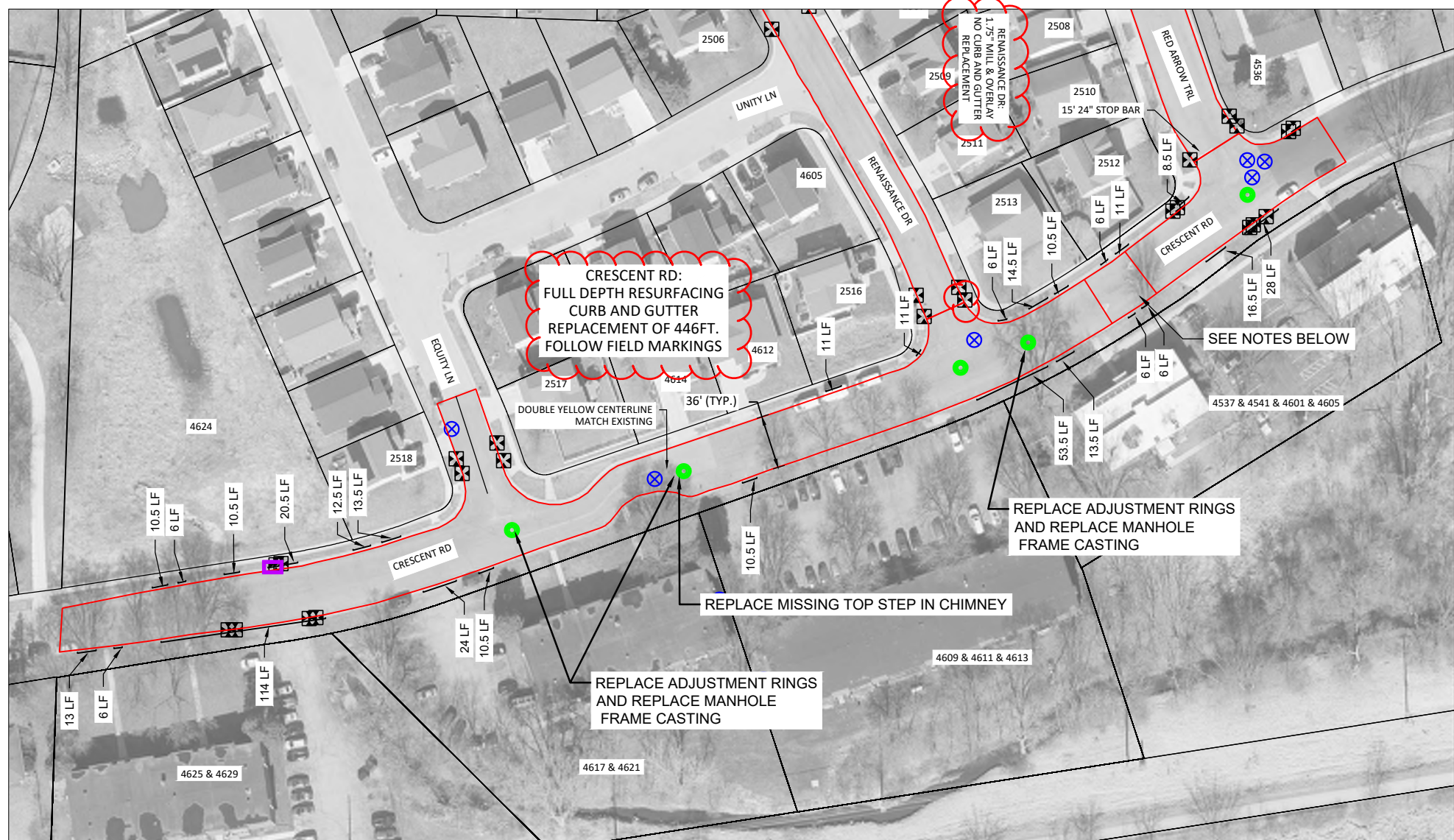
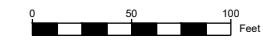
RESURFACING WORK MAY NOT START UNTIL AFTER WATER MAIN WORK IS COMPLETE.



2025 ARPA STREET RESURFACING
AZTEC TRL

DRAWN BY: SRH
DATE: 10/11/2024
REV A 01/21/2025

SHEET NO.:
7



- LEGEND**
- ⊗ ADJUST WATER VALVE
 - REPLACE ADJUSTING RINGS - SANITARY
 - REPLACE ADJUSTING RINGS - STORM
 - ⊗ ADJUST WATER VALVE BOX
 - ⊠ INLET PROTECTION
 - ADJUST STORM INLET
 - REPLACE ADJUSTING RINGS - INLET
 - XX LF OF 30" C&G REMOVE AND REPLACE

NOTE: SAWCUT REQ'D WHEN MATCHING INTO EXISTING PAVEMENT (INCIDENTAL TO CONTRACT). ENGINEER MUST APPROVE SAWCUT LOCATION IN FIELD PRIOR TO ANY CUTTING.

PROJECT SCHEDULE NOTES:
WATER MAIN AND STORM SEWER WORK ON CRESCENT RD TO BE COMPLETED BY OTHERS PRIOR TO PAVING. SOME ASPHALT WILL BE REMOVED, AND 16" OF AGGREGATE WILL BE PROVIDED TO MATCH EXISTING ELEVATION.

RESURFACING WORK MAY NOT START UNTIL AFTER WATER MAIN AND STORM SEWER WORK IS COMPLETE.

SPEED TABLE NOTES:
1. REMOVE EXISTING ASPHALT SPEED TABLE AND REPLACE WITH CONCRETE SPEED TABLE.
2. REFERENCE S.D.D 5.04 TYPICAL SPEED TABLE IN THE CITY OF FITCHBURG STANDARD SPECIFICATIONS.









2025 ARPA STREET RESURFACING
CRESCENT RD

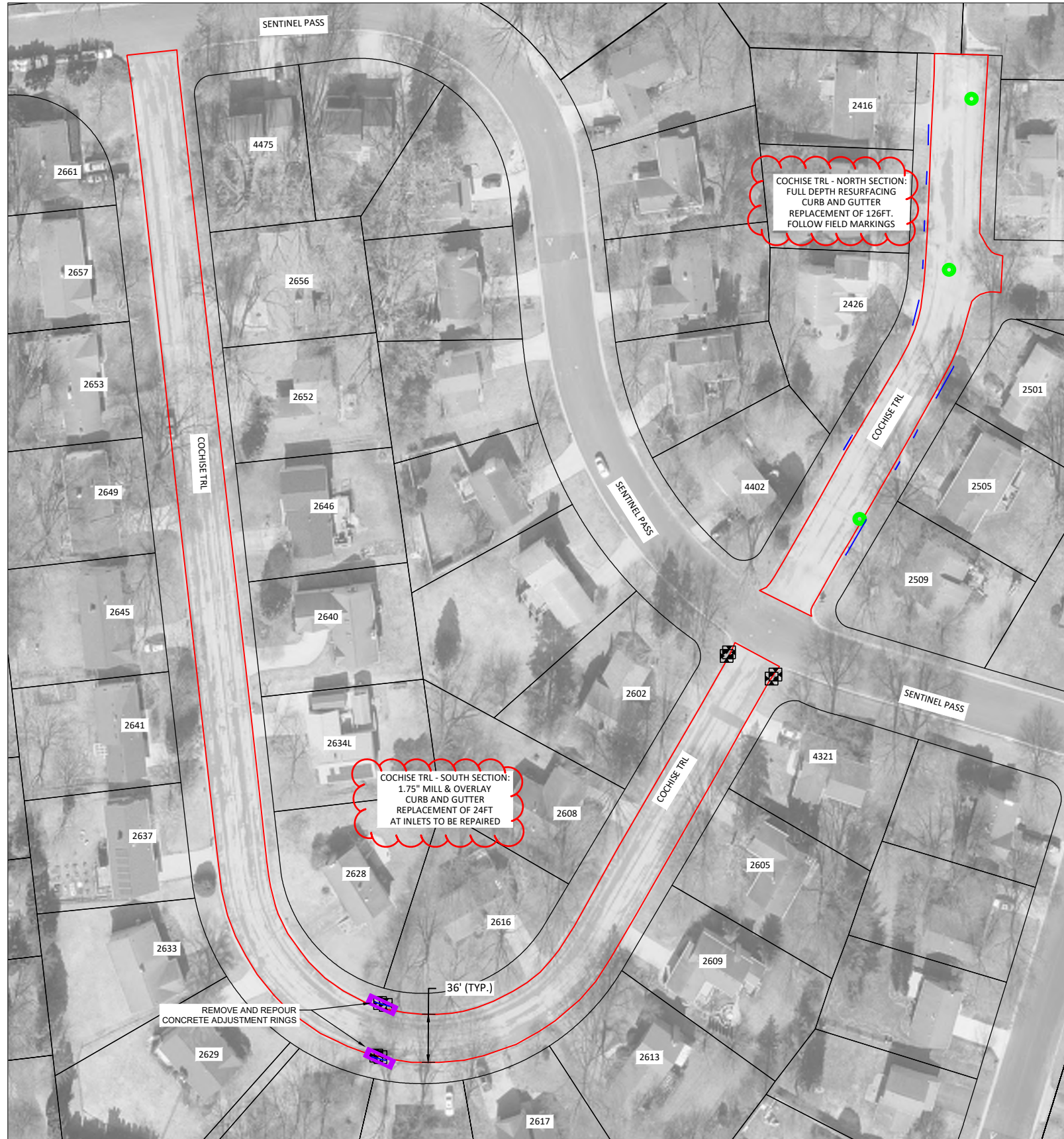
DRAWN BY: SRH
DATE: 10/11/2024
REV A 01/21/2025

SHEET NO.:
8

NOTE: SAWCUT REQ'D WHEN MATCHING INTO EXISTING PAVEMENT (INCIDENTAL TO CONTRACT). ENGINEER MUST APPROVE SAWCUT LOCATION IN FIELD PRIOR TO ANY CUTTING.

LEGEND

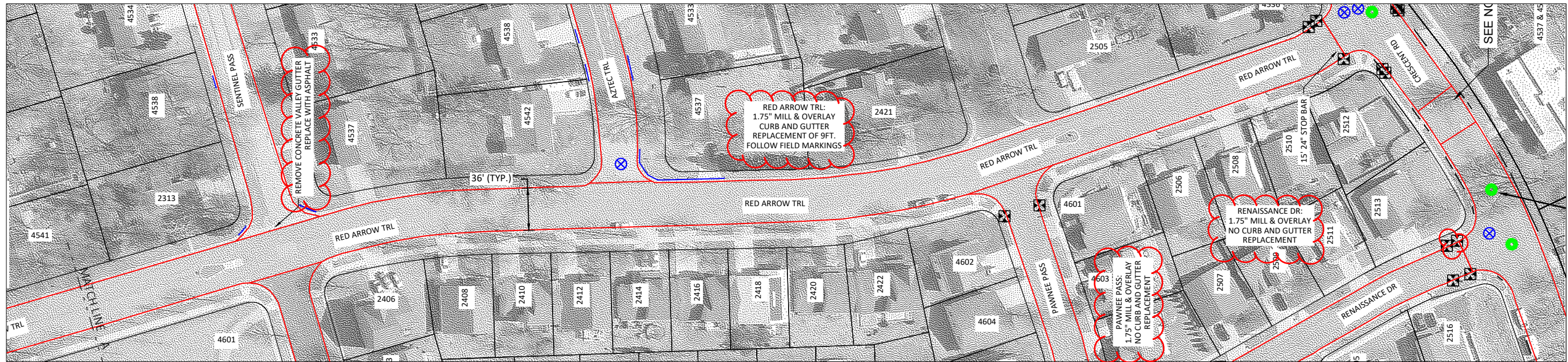
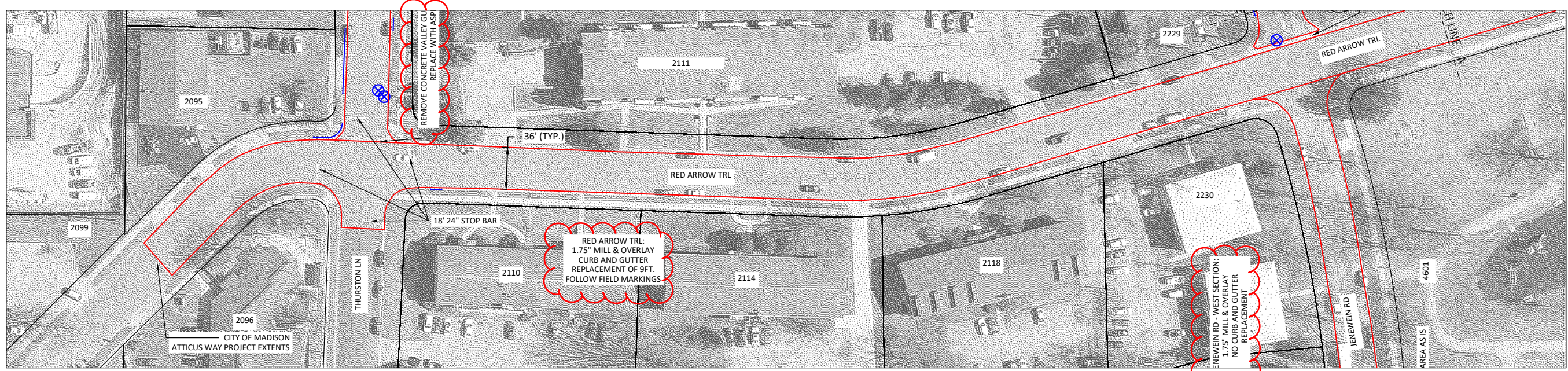
-  ADJUST WATER VALVE
-  REPLACE ADJUSTING RINGS - SANITARY
-  REPLACE ADJUSTING RINGS - STORM
-  ADJUST WATER VALVE BOX
-  INLET PROTECTION
-  ADJUST STORM INLET
-  REPLACE ADJUSTING RINGS - INLET
-  XX LF OF 30" C&G REMOVE AND REPLACE



2025 ARPA STREET RESURFACING
COCHISE TRL

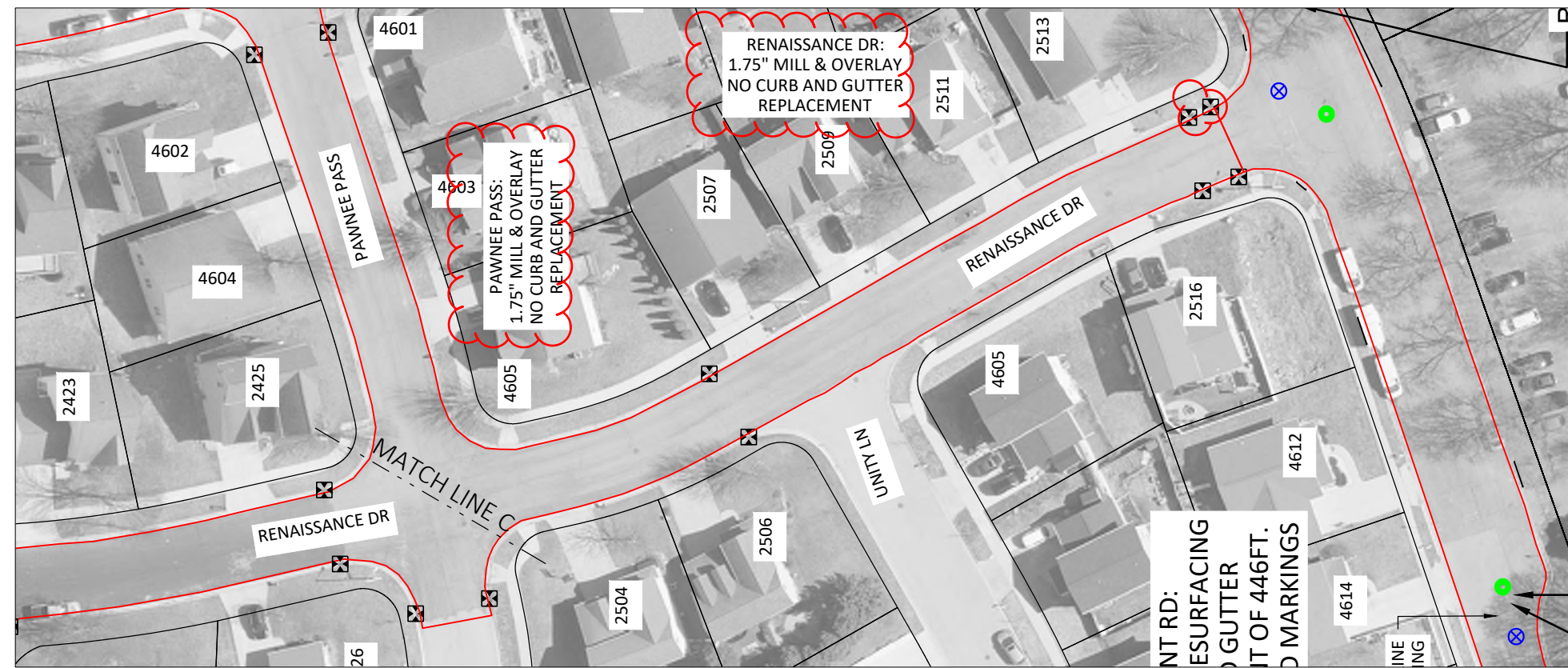
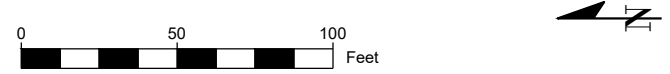
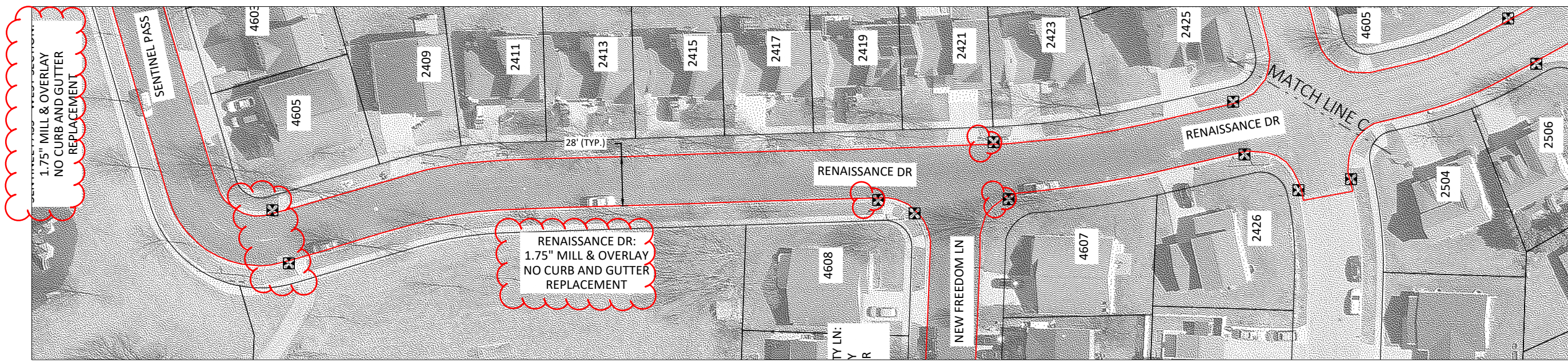
DRAWN BY: SRH
DATE: 10/11/2024
REV A 01/21/2025

SHEET NO.:
9



- LEGEND**
- ADJUST WATER VALVE
 - REPLACE ADJUSTING RINGS - SANITARY
 - REPLACE ADJUSTING RINGS - STORM
 - ADJUST WATER VALVE BOX
 - INLET PROTECTION
 - ADJUST STORM INLET
 - REPLACE ADJUSTING RINGS - INLET
 - XX LF OF 30" C&G REMOVE AND REPLACE

NOTE: SAWCUT REQ'D WHEN MATCHING INTO EXISTING PAVEMENT (INCIDENTAL TO CONTRACT). ENGINEER MUST APPROVE SAWCUT LOCATION IN FIELD PRIOR TO ANY CUTTING.



NOTE: SAWCUT REQ'D WHEN MATCHING INTO EXISTING PAVEMENT (INCIDENTAL TO CONTRACT). ENGINEER MUST APPROVE SAWCUT LOCATION IN FIELD PRIOR TO ANY CUTTING.

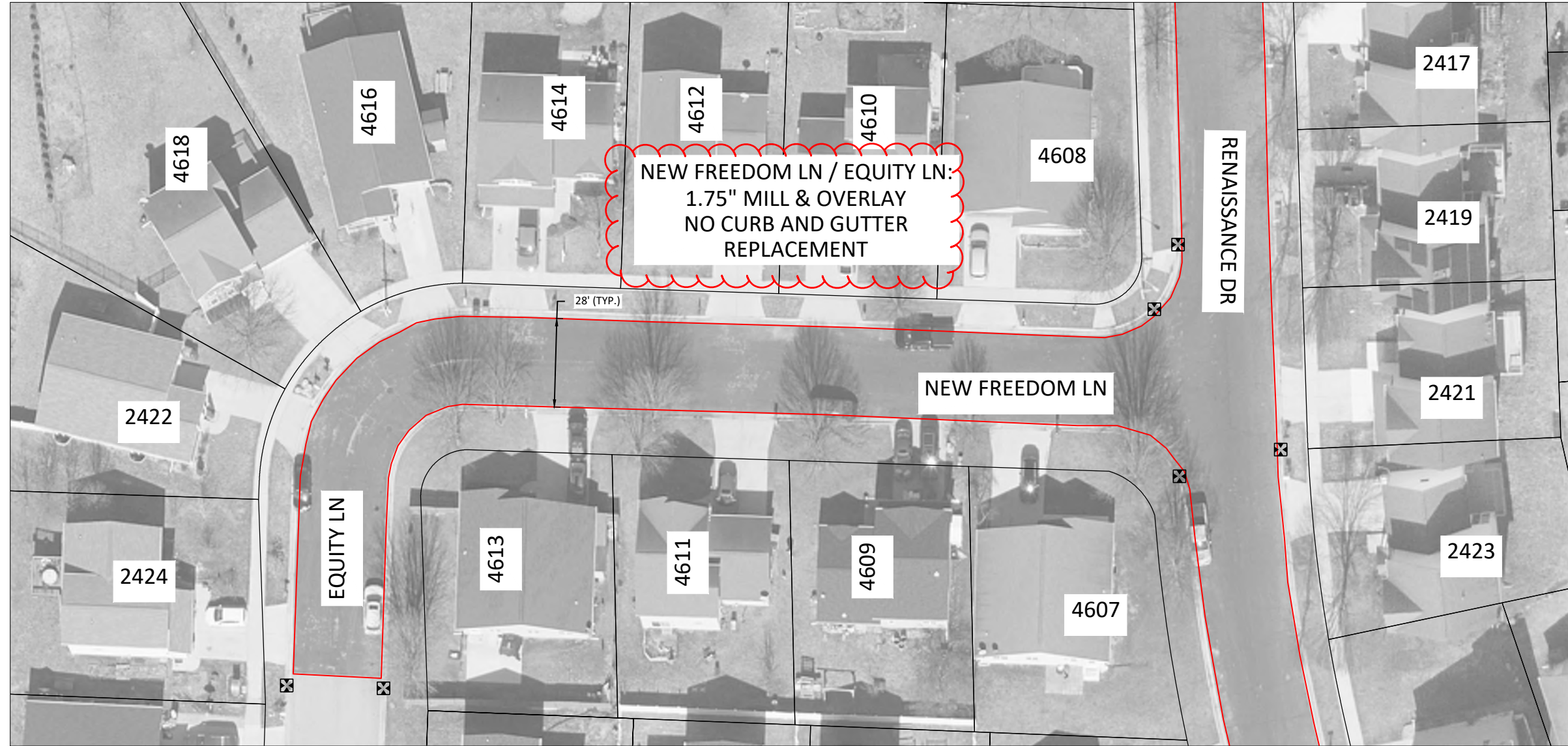
- LEGEND**
- ADJUST WATER VALVE
 - REPLACE ADJUSTING RINGS - SANITARY
 - REPLACE ADJUSTING RINGS - STORM
 - ADJUST WATER VALVE BOX
 - INLET PROTECTION
 - ADJUST STORM INLET
 - REPLACE ADJUSTING RINGS - INLET
 - XX LF OF 30" C&G REMOVE AND REPLACE



2025 ARPA STREET RESURFACING
RENAISSANCE DR

DRAWN BY: SRH
DATE: 10/11/2024
REV A 01/21/2025

SHEET NO.:
11



NEW FREEDOM LN / EQUITY LN:
1.75" MILL & OVERLAY
NO CURB AND GUTTER
REPLACEMENT

28' (TYP.)

NEW FREEDOM LN

RENAISSANCE DR

EQUITY LN

- LEGEND**
- ⊕ ADJUST WATER VALVE
 - ⊙ REPLACE ADJUSTING RINGS - SANITARY
 - ⊙ REPLACE ADJUSTING RINGS - STORM
 - ⊗ ADJUST WATER VALVE BOX
 - ⊠ INLET PROTECTION
 - ⊠ ADJUST STORM INLET
 - ⊠ REPLACE ADJUSTING RINGS - INLET
 - XX LF OF 30" C&G REMOVE AND REPLACE

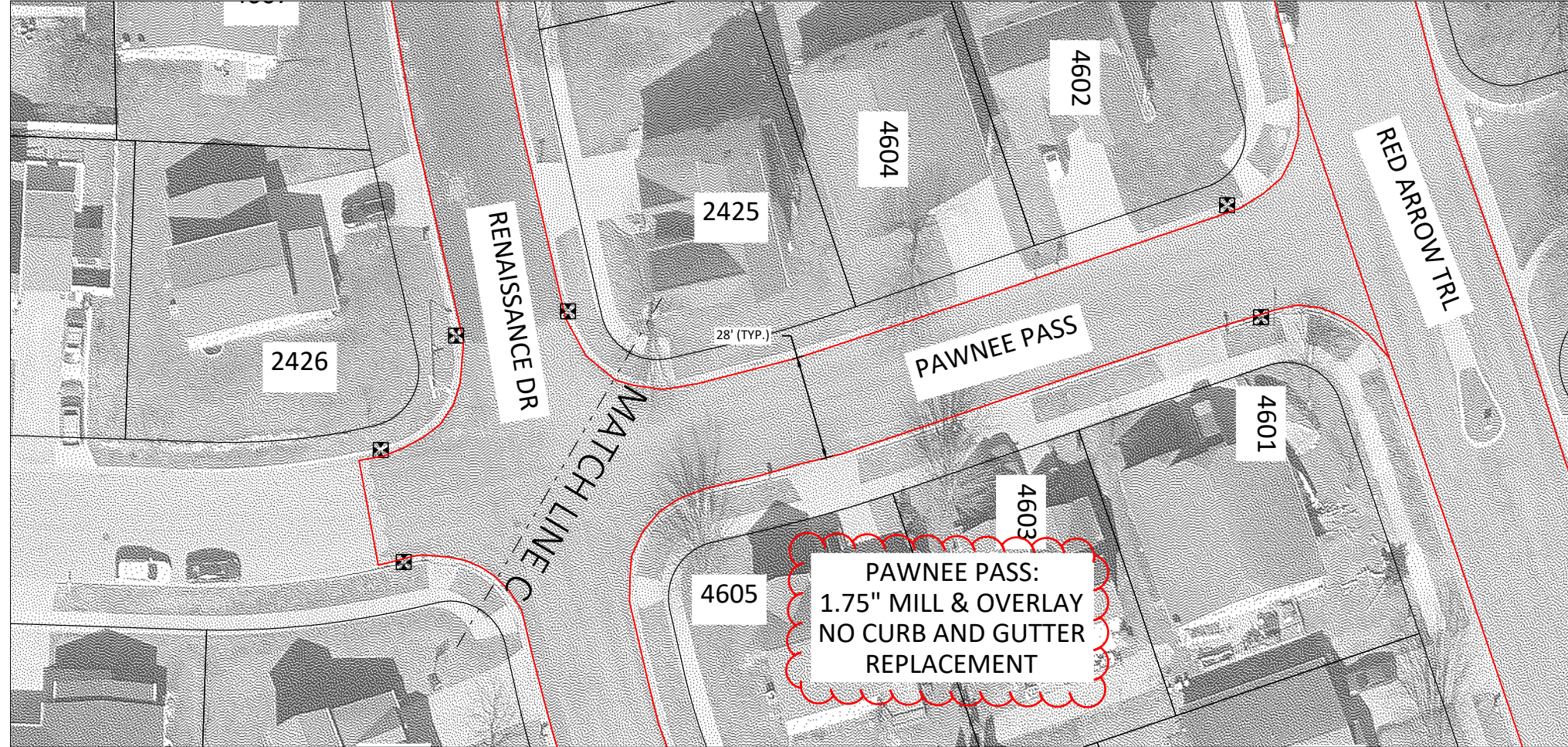
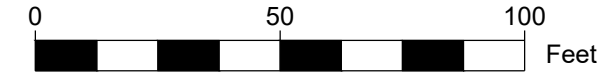
NOTE: SAWCUT REQ'D WHEN MATCHING INTO EXISTING PAVEMENT (INCIDENTAL TO CONTRACT). ENGINEER MUST APPROVE SAWCUT LOCATION IN FIELD PRIOR TO ANY CUTTING.



2025 ARPA STREET RESURFACING
NEW FREEDOM LN

DRAWN BY: SRH
DATE: 10/11/2024
REV A 01/21/2025

SHEET NO.:
12



- LEGEND**
- ⊕ ADJUST WATER VALVE
 - ⊙ REPLACE ADJUSTING RINGS - SANITARY
 - ⊙ REPLACE ADJUSTING RINGS - STORM
 - ⊗ ADJUST WATER VALVE BOX
 - ⊠ INLET PROTECTION
 - ⊠ ADJUST STORM INLET
 - ⊠ REPLACE ADJUSTING RINGS - INLET
 - XX LF OF 30" C&G REMOVE AND REPLACE

NOTE: SAWCUT REQ'D WHEN MATCHING INTO EXISTING PAVEMENT (INCIDENTAL TO CONTRACT). ENGINEER MUST APPROVE SAWCUT LOCATION IN FIELD PRIOR TO ANY CUTTING.