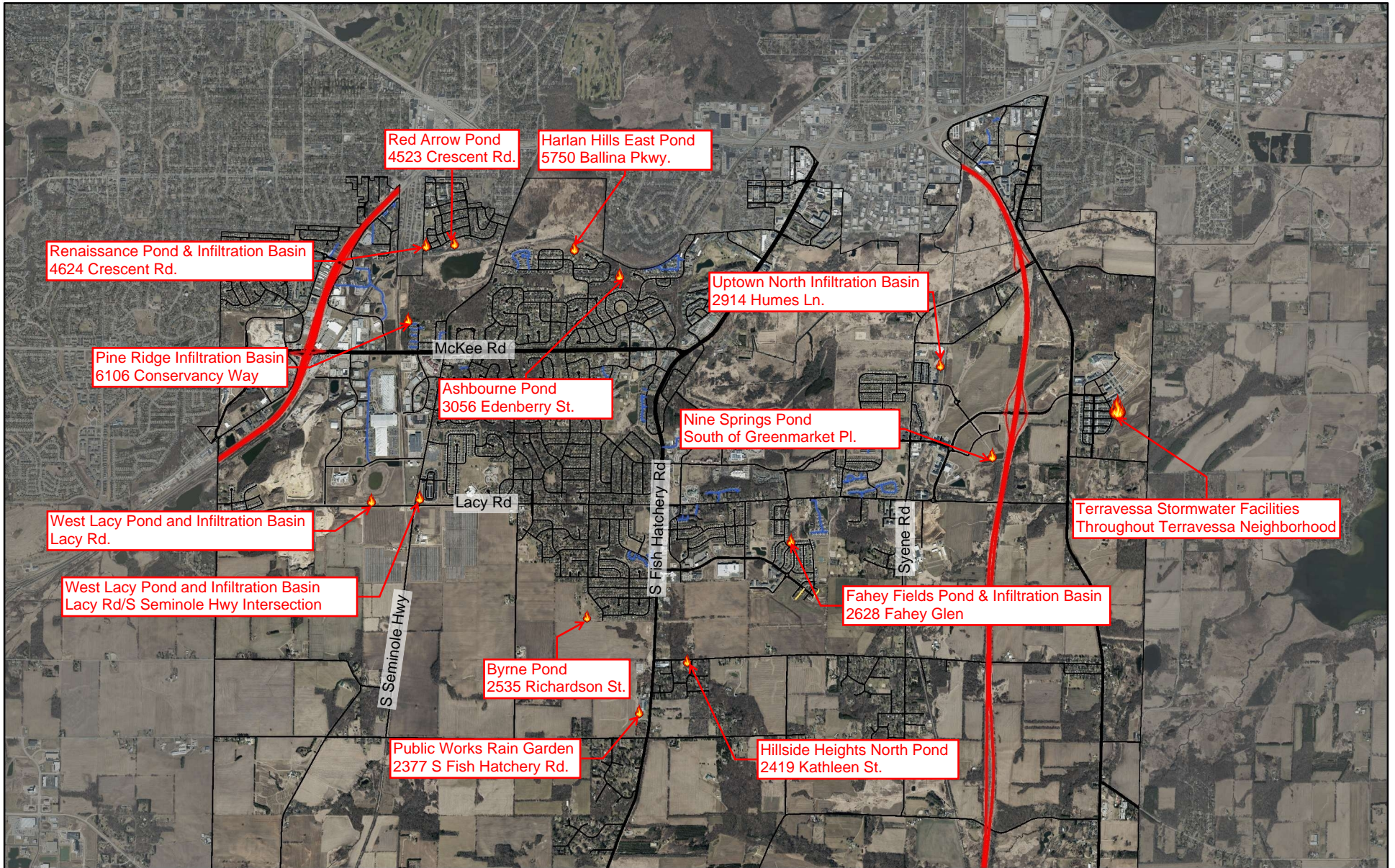


2026 Stormwater Utility Prescribed Burns



Red Arrow Pond
4523 Crescent Rd.

Renaissance Pond & Infiltration Basin
4624 Crescent Rd.

Harlan Hills East Pond
5750 Ballina Pkwy.

Pine Ridge Infiltration Basin
6106 Conservancy Way

McKee Rd

Ashbourne Pond
3056 Edenberry St.

Uptown North Infiltration Basin
2914 Humes Ln.

Nine Springs Pond
South of Greenmarket Pl.

West Lacy Pond and Infiltration Basin
Lacy Rd.

Lacy Rd

West Lacy Pond and Infiltration Basin
Lacy Rd/S Seminole Hwy Intersection

S Seminole Hwy

Byrne Pond
2535 Richardson St.

S Fish Hatchery Rd

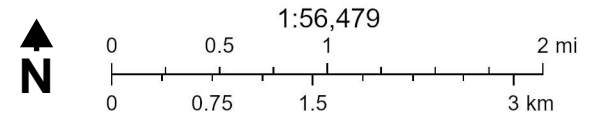
Public Works Rain Garden
2377 S Fish Hatchery Rd.

Syene Rd

Fahey Fields Pond & Infiltration Basin
2628 Fahey Glen

Terravessa Stormwater Facilities
Throughout Terravessa Neighborhood

Hillside Heights North Pond
2419 Kathleen St.



Dane County Land Information Office (LIO), Fly Dane Partnership, Ayres Associates, Wisconsin Regional Orthoimagery Consortium (WROC)