

2026 STREET RESURFACING

CITY OF FITCHBURG, WISCONSIN



2026 STREET RESURFACING
TITLE SHEET

DRAWN BY: SRH
DATE: 12/15/2025
REVISED:



SHEET NO.:
0

| SHEET NO. | SHEET DESCRIPTION |
|-----------|-------------------------------|
| 0 | TITLE SHEET |
| 1 | GENERAL NOTES |
| 2 | SPECHT DR |
| 3 | PETERSBURG CIR |
| 4 | CHICORY MEADOWS PARK |
| 5 | FISH HATCHERY PATH |
| 6 | MERLIN ST |
| 7 | EUGENE CT & BARBARA DR |
| 8 | BARBARA DR |
| 9 | FLORANN DR & LYMAN LN |
| 10 | TOWER HILL DR |
| 11 | RESEARCH PARK DR |
| 12 | RESEARCH PARK DR DETAIL SHEET |
| 13 | RYELAND ST |
| 14 | CLAYTON PARK BASKETBALL COURT |
| 15 | HILLSIDE HEIGHTS NEIGHBORHOOD |
| 16 | HILLSIDE HEIGHTS PARK |



PROJECT CONTACTS

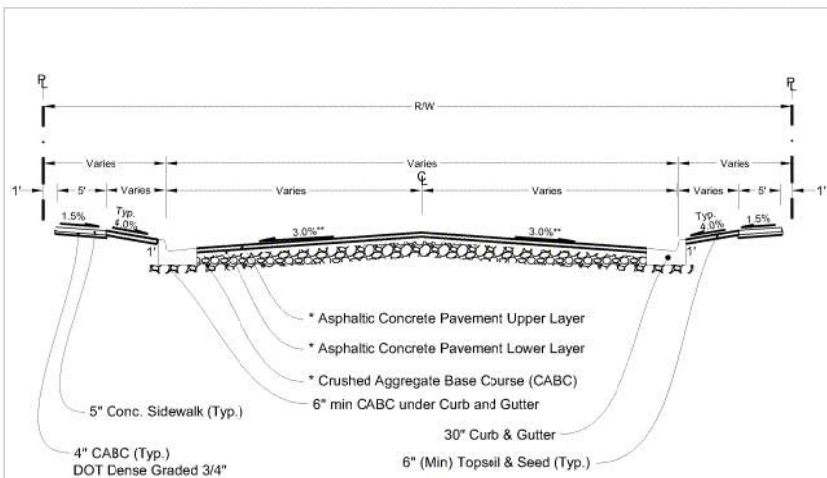
CITY OF FITCHBURG PUBLIC WORKS

ZAC LAUNDRIE
ROW ENGINEER
5520 LACY RD
FITCHBURG, WI 53711
PHONE: 608-270-4263
EMAIL: ZAC.LAUNDRIE@FITCHBURGWI.GOV

SAM HAGEMAN
ENGINEERING TECHNICIAN
5520 LACY RD
FITCHBURG, WI 53711
PHONE: 608-206-3109
EMAIL: SAMANTHA.HAGEMAN@FITCHBURGWI.GOV

ROSS KAHLER
SENIOR TRANSPORTATION ENGINEER
5520 LACY RD
FITCHBURG, WI 53711
PHONE: 608-270-4266
EMAIL: ROSS.KAHLER@FITCHBURGWI.GOV

NOTE:
ALL STREETS IN
THIS PROJECT
ARE RESIDENTIAL



* City of Fitchburg Minimum New Pavement Design

| Type | Crushed Aggregate Base Course | | Asphaltic Concrete Pavement | | Asphalt Material |
|-------------|-------------------------------|-----------------------|-----------------------------|-----------------------------|------------------|
| | Lower Layer | Upper Layer | Lower Layer | Upper Layer | |
| Residential | Dense 3" 7"-8" | Dense 1 1/2" 4"-5" | Type Thickness LT 2 1/4" | Type Thickness LT 1 3/4" | 58-28 |
| Collector | 7"-8" | 4"-5" | LT 2 3/4" | LT 1 3/4" | 58-28 |
| Arterial | 7"-8" | 4"-5" | MT 3" | MT 2 1/4" | 58-28 |

*Note: All cul-de-sac bulbs shall increase binder and surface by 1/4"

**Note: Partial depth mill & overlay shall match existing cross slope.

GENERAL NOTES

1. ALL WORK SHALL BE COMPLETED IN ACCORDANCE WITH THE LATEST EDITIONS OF THE SPECIAL PROVISIONS FOR THIS PROJECT, THE LATEST EDITION OF THE "CITY OF FITCHBURG STANDARD SPECIFICATIONS FOR PUBLIC WORKS CONSTRUCTION", AND THE LATEST EDITION OF THE STATE OF WISCONSIN "STANDARD SPECIFICATIONS FOR HIGHWAY AND STRUCTURE CONSTRUCTION". SPECIFICATION HIERARCHY IS DEFINED IN THE AGREEMENT.
2. ALL STREET DIMENSIONS ARE MEASURED TO THE EDGE OF PAVEMENT UNLESS SPECIFIED ELSEWHERE.
3. MANHOLE CASTINGS WITHIN THE PAVEMENT ARE TO BE SET TO 1/4" BELOW ASPHALT SURFACE GRADE.
4. RECONSTRUCTED MANHOLES SHALL HAVE BETWEEN 3" AND 9" OF ADJUSTING RINGS.
5. PULVERIZED MATERIAL SHALL BE REMOVED ON ALL STREETS.
6. ALL PAVEMENT MARKING SHALL MATCH EXISTING PAVEMENT MARKING UNLESS OTHERWISE SPECIFIED BY ENGINEER.

EROSION CONTROL REQUIREMENTS

1. ALL EROSION AND SEDIMENT CONTROL PRACTICES SHALL BE IMPLEMENTED IN ACCORDANCE WITH THE CURRENT WISCONSIN DEPARTMENT OF NATURAL RESOURCES (WDNR) EROSION AND SEDIMENT CONTROL TECHNICAL STANDARDS (DNR.W.GOV).
2. EROSION AND SEDIMENT CONTROL MEASURES NOTED ON THE PLANS SHALL BE INSTALLED PRIOR TO SITE DISTURBANCE.
3. THE CITY OF FITCHBURG RESERVES THE RIGHT TO REQUIRE THE CONTRACTOR TO IMPLEMENT ADDITIONAL EROSION CONTROL MEASURES AS NECESSARY.
4. EROSION AND SEDIMENT CONTROL MEASURES SHALL BE INSPECTED ONCE PER WEEK AND FOLLOWING EACH RAINFALL EVENT OF 1/2" OR GREATER. INSPECTION REPORTING EVENTS SHALL BE IN ACCORDANCE WITH THE CITY OF FITCHBURG REQUIREMENTS AND SHALL BE THE RESPONSIBILITY OF THE CONTRACTOR.
5. ALL SLOPES EXCEEDING 20% (5:1) SHALL BE STABILIZED WITH A CLASS 1, TYPE A URBAN EROSION MAT.
6. DUST CONTROL SHALL BE MITIGATED IN ACCORDANCE WITH WDNR TECHNICAL STANDARD 1068.
7. TRACKED SOIL FROM THE SITE TO STREET SHALL BE REMOVED AS NEEDED AT THE DISCRETION OF THE CITY ENGINEER AND AT A MINIMUM OF ONCE AT THE END OF EACH WORK DAY.
8. ALL DISTURBED AREAS SHALL BE SEEDED AND E-MATTED OR HYDRO MULCHED WITHIN 7 DAYS OF FINAL GRADING.
9. INSTALL PERIMETER CONTROLS ON THE DOWN SLOPE OF STOCKPILES. PROVIDE TEMPORARY SEEDING ON STOCKPILES AND DISTURBED AREAS THAT ARE TO REMAIN UNWORKED FOR MORE THAN 7 DAYS.
10. ANY AREAS WHERE CONSTRUCTION HAS TEMPORARILY CEASED AND WILL NOT RESUME FOR MORE THAN 14 DAYS SHALL BE TEMPORARILY STABILIZED.



2026 STREET RESURFACING

GENERAL NOTES

DRAWN BY: SRH
DATE: 12/15/2025
REVISED:

SHEET NO:

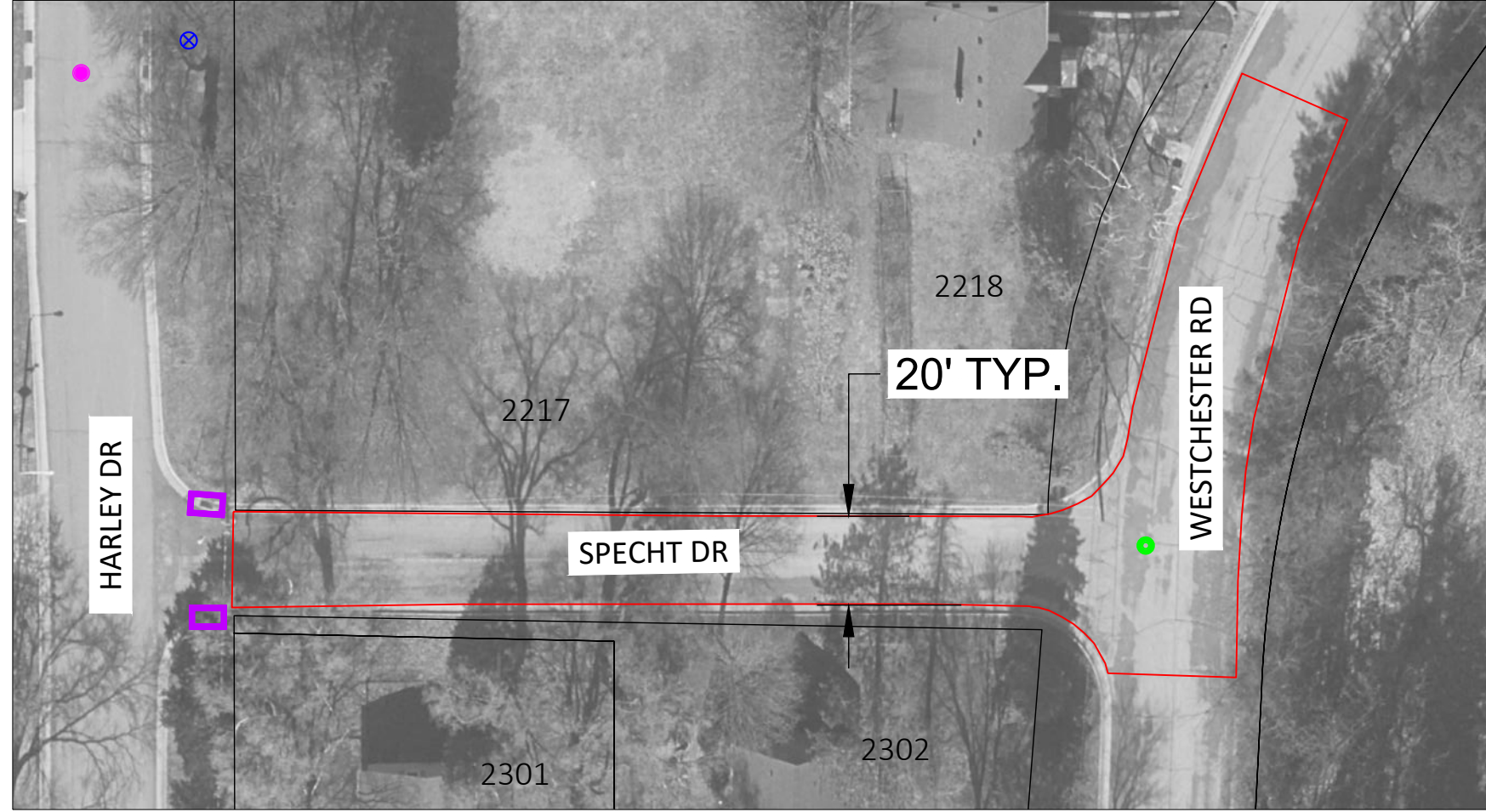
1

LEGEND

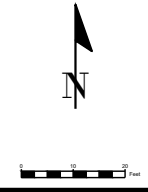
- ⊗ ADJUST WATER VALVE
- ⊗ ADJUST WATER VALVE MANHOLE
- REPLACE ADJUSTING RINGS - SANITARY
- REPLACE ADJUSTING RINGS - STORM
- ⊗ REPLACE ADJUSTING RINGS - INLET & INLET PROTECTION
- ADJUST STORM INLET
- INLET PROTECTION
- 30" C&G REMOVE AND REPLACE

NOTES:

1. CLEAN, UNDAMAGED SAWCUT REQ'D WHEN MATCHING INTO EXISTING PAVEMENT (INCIDENTAL TO CONTRACT). ENGINEER MUST APPROVE SAWCUT LOCATION IN FIELD PRIOR TO ANY CUTTING.
2. CURB AND GUTTER REPLACEMENT AMOUNTS ARE AN ESTIMATE. PLANS WITH SURVEYED AND MARKED AMOUNTS WILL BE PROVIDED PRIOR TO CONSTRUCTION.



| Class | Street | From | To | Length (LF) | Width (FT) | Area (SY) | 201 | 301 | 302 | 303 | 304 | 401 | 402 | 403 | 404 | 405 | 406 | 501 | 503 | 504 | 505 | 506 | 509 | 602 | 604 | 605 | 606 | 701 | 702 | 801 | 803 | 901 | 902 | 903 | 904 | 906 |
|-------|-----------|--------|-------------|-------------|------------|-----------|-----|------|------|-----|-----|-----|-----|-----|-----|-----|-----|-------|------|------|-------|-----|-----|-----|-----|-----|-----|-----|-----|-----|-----|-----|-----|-----|-----|-----|
| URBAN | Specht Dr | Harley | Westchester | 200 | 20 | 889 | EA | CY | SY | EA | LF | LF | SF | SF | LF | SF | SF | SY | GAL | TON | TON | LF | SY | EA | EA | EA | EA | EA | EA | EA | EA | EA | EA | EA | EA | EA |
| | | | | | | | 2 | 44.4 | 13.3 | | | 60 | | | | | | 888.9 | 53.3 | 89.4 | 115.0 | 440 | | | | | | | 1 | | | | | | | |

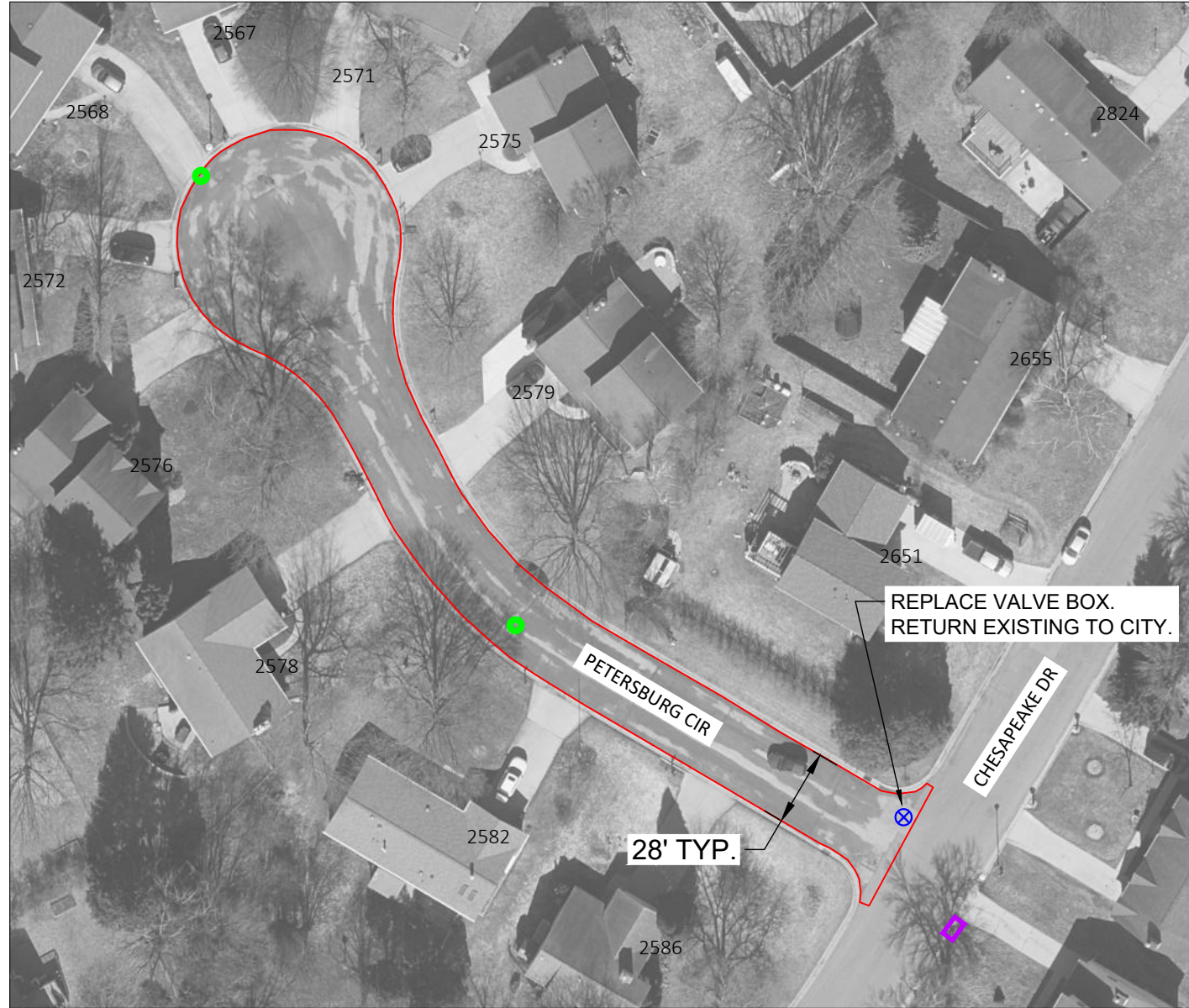


LEGEND

- ⊗ ADJUST WATER VALVE
- ⊗ ADJUST WATER VALVE MANHOLE
- REPLACE ADJUSTING RINGS - SANITARY
- REPLACE ADJUSTING RINGS - STORM
- ⊗ REPLACE ADJUSTING RINGS - INLET & INLET PROTECTION
- ADJUST STORM INLET
- INLET PROTECTION
- 30" C&G REMOVE AND REPLACE

NOTES:

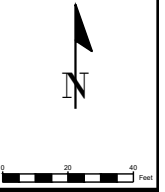
1. CLEAN, UNDAMAGED SAWCUT REQ'D WHEN MATCHING INTO EXISTING PAVEMENT (INCIDENTAL TO CONTRACT). ENGINEER MUST APPROVE SAWCUT LOCATION IN FIELD PRIOR TO ANY CUTTING.
2. CURB AND GUTTER REPLACEMENT AMOUNTS ARE AN ESTIMATE. PLANS WITH SURVEYED AND MARKED AMOUNTS WILL BE PROVIDED PRIOR TO CONSTRUCTION.



| Class | Street | From | To | Length (LF) | Width (FT) | Area (SY) | Framed Inlet Protection | Excavation Below Subgrade | Seeding and Restoration | Remove Median | Horizontal Curb Saw Cut | Remove and Replace Curb and Gutter | Remove and Replace Concrete - 7" | Remove and Replace Concrete - 5" | 2' Detectable Warning Field Natural Patina | New Concrete - 7" | New Concrete - 5" | Pulverize Pavement | Tack Coat | HMA Pavement - Upper Layer | HMA Pavement - Lower Layer | Pavement Joint Adhesive | Utility Patching | Adjust Storm Inlet | Remove and Replace Culvert | Remove Culvert | Move Storm Inlet | Adjust Water Valve Box | Remove and Replace Water Valve Box | Adjust Sanitary Manhole Cover | Replace Sanitary Manhole Frame Casting | 4" Epoxy Paint | 6" Epoxy Paint | 24" Epoxy Paint | Single Arrow Epoxy Paint | Curb Marking Epoxy Paint | | |
|-------|----------------|---------------|--------|-------------|------------|-----------|-------------------------|---------------------------|-------------------------|---------------|-------------------------|------------------------------------|----------------------------------|----------------------------------|--|-------------------|-------------------|--------------------|-----------|----------------------------|----------------------------|-------------------------|------------------|--------------------|----------------------------|----------------|------------------|------------------------|------------------------------------|-------------------------------|--|----------------|----------------|-----------------|--------------------------|--------------------------|----|----|
| | | | | | | | EA | CY | SY | EA | LF | LF | SF | SF | LF | SF | SF | SY | GAL | TON | TON | LF | SY | EA | EA | EA | EA | EA | EA | EA | EA | EA | EA | EA | EA | EA | EA | EA |
| URBAN | Petersburg Cir | Chesapeake Dr | Entire | 360 | 28 | 1120 | 3 | 56.0 | 24.0 | | | 108 | | | | | | 1120.0 | 67.2 | 112.7 | 144.9 | 776 | | 2 | | | | 1 | 1 | 2 | | | | | | | | |

**2026 STREET RESURFACING
PETERSBURG CIR**

DRAWN BY: SRH
DATE: 12/15/2025
REVISED:



LEGEND

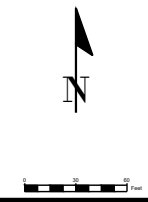
- ⊗ ADJUST WATER VALVE
- ⊗ ADJUST WATER VALVE MANHOLE
- REPLACE ADJUSTING RINGS - SANITARY
- REPLACE ADJUSTING RINGS - STORM
- ⊗ REPLACE ADJUSTING RINGS - INLET & INLET PROTECTION
- ADJUST STORM INLET
- INLET PROTECTION
- 30" C&G REMOVE AND REPLACE

NOTES:

1. CLEAN, UNDAMAGED SAWCUT REQ'D WHEN MATCHING INTO EXISTING PAVEMENT (INCIDENTAL TO CONTRACT). ENGINEER MUST APPROVE SAWCUT LOCATION IN FIELD PRIOR TO ANY CUTTING.
2. CURB AND GUTTER REPLACEMENT AMOUNTS ARE AN ESTIMATE. PLANS WITH SURVEYED AND MARKED AMOUNTS WILL BE PROVIDED PRIOR TO CONSTRUCTION.



| Class | Street | From | To | Length (LF) | Width (FT) | Area (SY) | 201 | 301 | 302 | 303 | 304 | 401 | 402 | 403 | 404 | 405 | 406 | 501 | 503 | 504 | 505 | 506 | 509 | 602 | 604 | 605 | 606 | 701 | 702 | 801 | 803 | 901 | 902 | 903 | 904 | 906 |
|-------|-----------|-------------|---------------|-------------|------------|-----------|-----|-------|------|-----|-----|-----|-----|-----|-----|-----|-----|--------|-------|-------|-------|------|-----|-----|-----|-----|-----|-----|-----|-----|-----|-----|-----|-----|-----|-----|
| URBAN | Merlin St | Marledge St | Richardson St | 875 | 28 | 2722 | EA | CY | SY | EA | LF | LF | SF | SF | LF | SF | SF | SY | GAL | TON | TON | LF | SY | EA | EA | EA | EA | EA | EA | EA | EA | EA | EA | EA | EA | EA |
| | | | | | | | 4 | 136.1 | 58.3 | | | 263 | | | | | | 2722.2 | 163.3 | 273.9 | 352.2 | 1806 | 3 | | | | 1 | | 2 | | | | | | | |

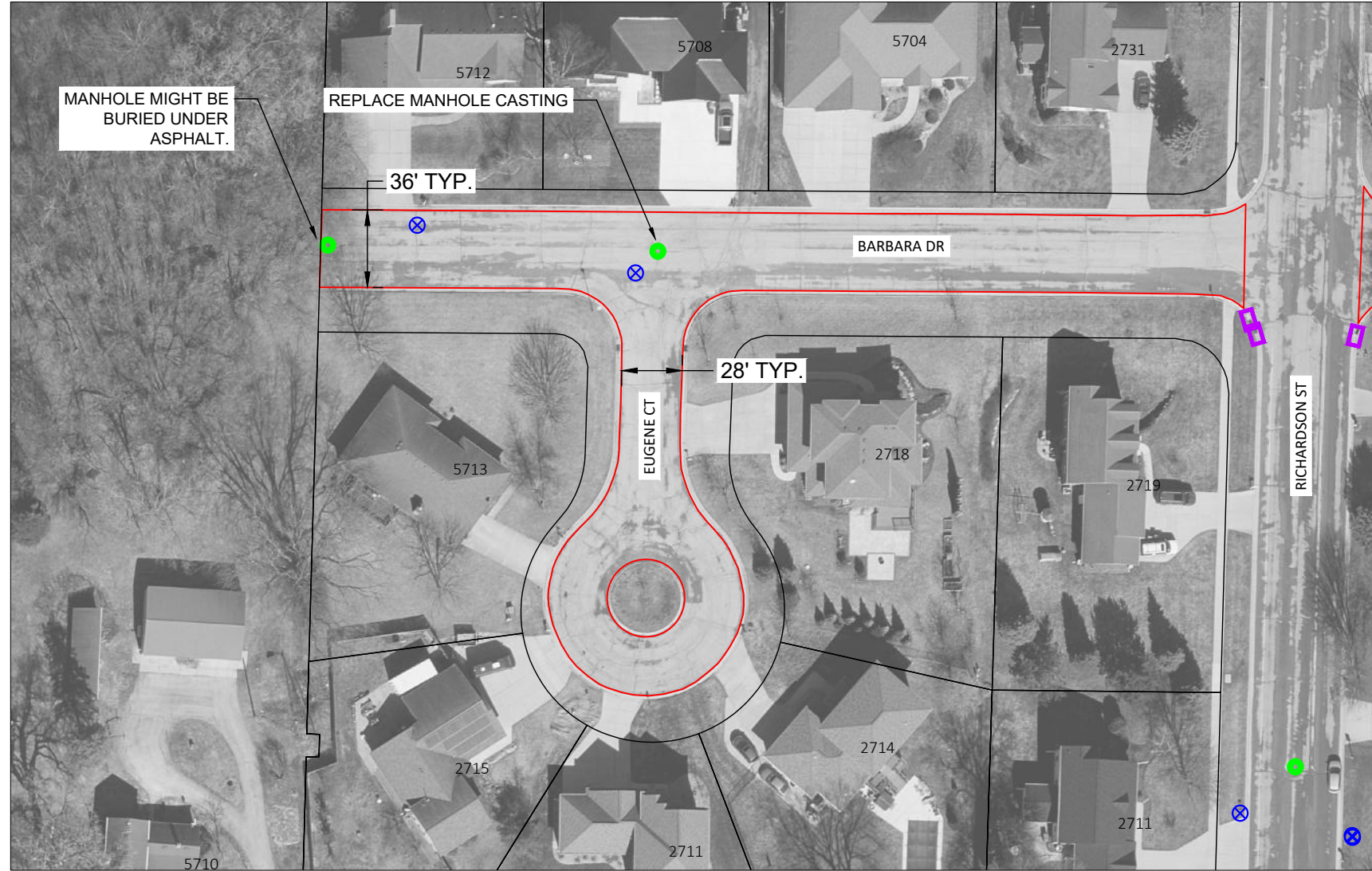


LEGEND

- ⊗ ADJUST WATER VALVE
- ⊗ ADJUST WATER VALVE MANHOLE
- REPLACE ADJUSTING RINGS - SANITARY
- REPLACE ADJUSTING RINGS - STORM
- ⊗ REPLACE ADJUSTING RINGS - INLET & INLET PROTECTION
- ADJUST STORM INLET
- INLET PROTECTION
- 30" C&G REMOVE AND REPLACE

NOTES:

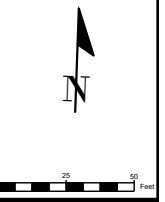
1. CLEAN, UNMAGNIFIED SAWCUT REQ'D WHEN MATCHING INTO EXISTING PAVEMENT (INCIDENTAL TO CONTRACT). ENGINEER MUST APPROVE SAWCUT LOCATION IN FIELD PRIOR TO ANY CUTTING.
2. CURB AND GUTTER REPLACEMENT AMOUNTS ARE AN ESTIMATE. PLANS WITH SURVEYED AND MARKED AMOUNTS WILL BE PROVIDED PRIOR TO CONSTRUCTION.



| Class | Street | From | To | Length (LF) | Width (FT) | Area (SY) | EA | CY | SY | EA | LF | LF | SF | SF | LF | SF | SF | SY | GAL | TON | TON | LF | SY | EA | EA | EA | EA | EA | EA | EA | EA | EA | EA | EA | EA | EA | | |
|-------|-----------------|---------------|----------|-------------|------------|-----------|----|------|------|----|-----|----|----|----|----|----|----|--------|-------|-------|-------|-----|----|----|----|----|----|----|----|----|----|----|----|----|----|----|--|--|
| URBAN | Eugene Ct | Barbara Dr | Entire | 300 | 28 | 851 | 2 | 42.6 | 20.0 | | 90 | | | | | | | 851.1 | 51.1 | 85.6 | 110.1 | 656 | | 2 | | | | | | | | | | | | | | |
| URBAN | Barbara Dr West | Richardson St | Dead end | 415 | 36 | 1780 | 3 | 89.0 | 27.7 | | 125 | | | | | | | 1780.2 | 106.8 | 179.1 | 230.3 | 902 | | 1 | | | | | | | | | | | | | | |

**2026 STREET RESURFACING
EUGENE CT & BARBARA DR**

DRAWN BY: SRH
DATE: 12/15/2025
REVISED:



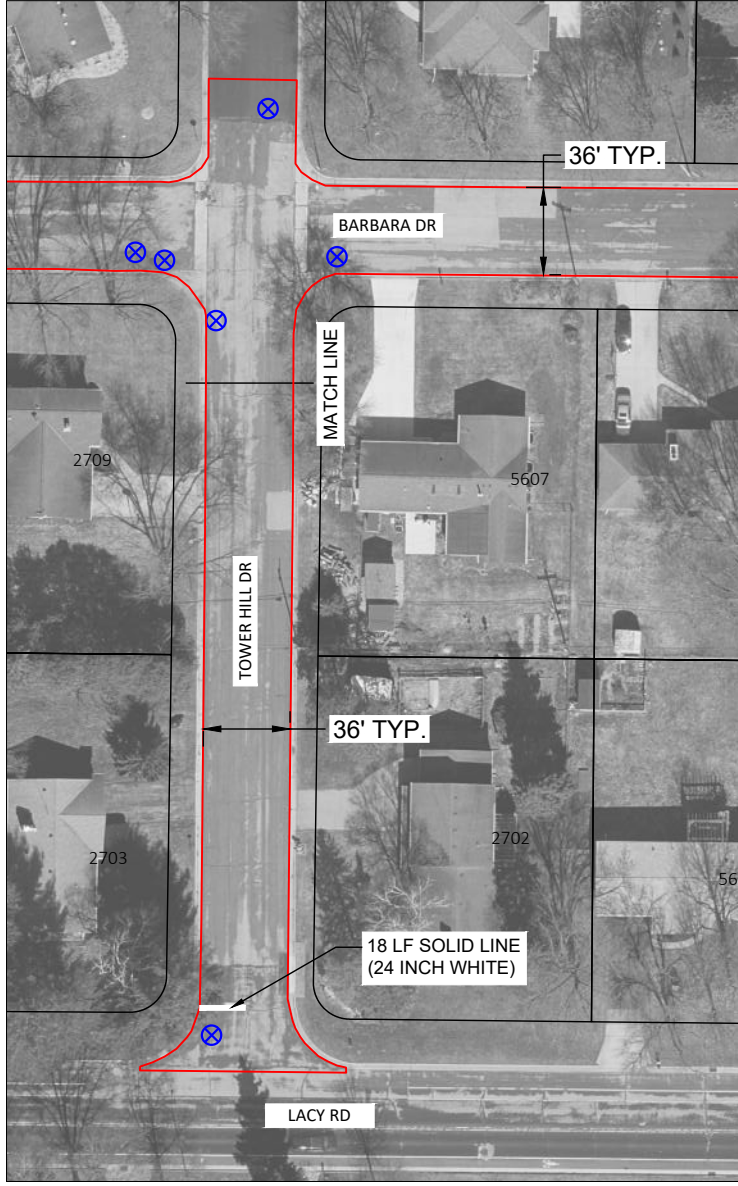
SHEET NO.:
7

LEGEND

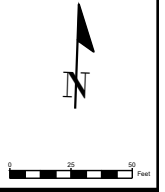
- ⊗ ADJUST WATER VALVE
- ⊗ ADJUST WATER VALVE MANHOLE
- ⊗ REPLACE ADJUSTING RINGS - SANITARY
- ⊗ REPLACE ADJUSTING RINGS - STORM
- ⊗ REPLACE ADJUSTING RINGS - INLET & INLET PROTECTION
- ⊗ ADJUST STORM INLET
- ⊗ INLET PROTECTION
- 30" C&G REMOVE AND REPLACE

NOTES:

1. CLEAN, UNDAMAGED SAWCUT REQ'D WHEN MATCHING INTO EXISTING PAVEMENT (INCIDENTAL TO CONTRACT). ENGINEER MUST APPROVE SAWCUT LOCATION IN FIELD PRIOR TO ANY CUTTING.
2. WATER MAIN WORK ON TOWER HILL DR TO BE COMPLETED BY OTHERS PRIOR TO THE START OF ANY WORK WITHIN THIS PROJECT. SOME ASPHALT WILL BE REMOVED AND 16" OF AGGREGATE WILL BE PROVIDED TO MATCH EXISTING ELEVATION.
3. CURB AND GUTTER REPLACEMENT AMOUNTS ARE AN ESTIMATE. PLANS WITH SURVEYED AND MARKED AMOUNTS WILL BE PROVIDED PRIOR TO CONSTRUCTION.



| Class | Street | From | To | Length (LF) | Width (FT) | Area (SY) | 201 | 301 | 302 | 303 | 304 | 401 | 402 | 403 | 404 | 405 | 406 | 501 | 503 | 504 | 505 | 506 | 509 | 602 | 604 | 605 | 606 | 701 | 702 | 801 | 803 | 901 | 902 | 903 | 904 | 906 | |
|-------|---------------|------------|------|-------------|------------|-----------|-----|------|------|-----|-----|-----|-----|-----|-----|-----|-----|--------|------|-------|-------|-----|-----|-----|-----|-----|-----|-----|-----|-----|-----|-----|-----|-----|-----|-----|--|
| URBAN | Tower Hill Dr | Barbara Dr | Lacy | 330 | 36 | 1058 | EA | CY | SY | EA | LF | LF | SF | SF | LF | SF | SF | SY | GAL | TON | TON | LF | SY | EA | EA | EA | EA | EA | EA | EA | EA | EA | EA | EA | EA | EA | |
| | | | | | | | | 52.9 | 22.0 | | | 99 | | | | | | 1058.0 | 63.5 | 106.5 | 136.9 | 732 | | | | | 3 | | | | | | | 18 | | | |

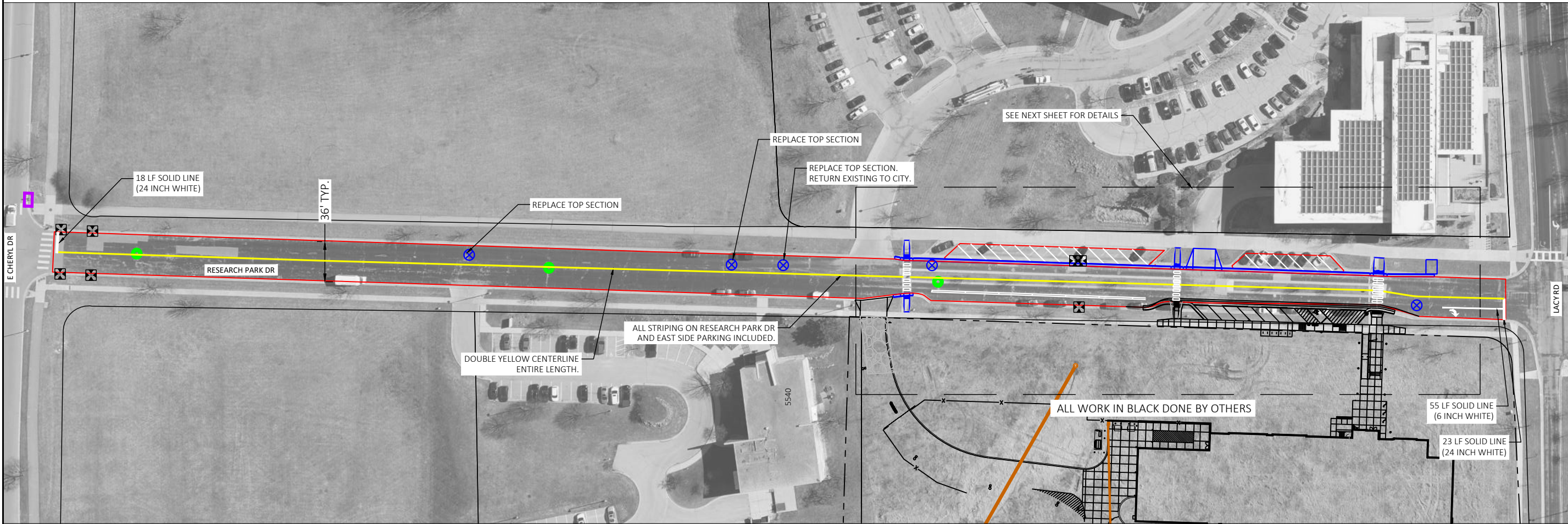


LEGEND

- ⊗ ADJUST WATER VALVE
- ⊗ ADJUST WATER VALVE MANHOLE
- ⊗ REPLACE ADJUSTING RINGS - SANITARY
- ⊗ REPLACE ADJUSTING RINGS - STORM
- ⊗ REPLACE ADJUSTING RINGS - INLET & INLET PROTECTION
- ⊗ ADJUST STORM INLET
- ⊗ INLET PROTECTION
- 30" C&G REMOVE AND REPLACE

NOTES:

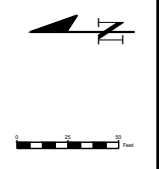
1. CLEAN, UNDAMAGED SAWCUT REQ'D WHEN MATCHING INTO EXISTING PAVEMENT (INCIDENTAL TO CONTRACT). ENGINEER MUST APPROVE SAWCUT LOCATION IN FIELD PRIOR TO ANY CUTTING.
2. WORK SHALL START WITHIN 2 WEEKS OF NOTICE. NOTICE TO START WORK ON RESEARCH PARK DR IS ANTICIPATED TO BE SENT BETWEEN MAY 1 AND JULY 1. RESEARCH PARK DR MAY BE CLOSED FOR 3 WEEKS TO ACCOMMODATE THIS WORK. CONTRACTOR SHALL COORDINATE ALL WORK WITH J.P. CULLEN (POLICE STATION CONTRACTOR).
3. CURB AND GUTTER REPLACEMENT AMOUNTS ARE AN ESTIMATE. PLANS WITH SURVEYED AND MARKED AMOUNTS WILL BE PROVIDED PRIOR TO CONSTRUCTION.



2026 STREET RESURFACING
RESEARCH PARK DR

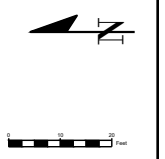
DRAWN BY: SRH
 DATE: 12/15/2025
 REVISED:

| Class | Street | From | To | Length (LF) | Width (FT) | Area (SY) | 201 | 301 | 302 | 303 | 304 | 401 | 402 | 403 | 404 | 405 | 406 | 501 | 503 | 504 | 505 | 506 | 509 | 602 | 604 | 605 | 606 | 701 | 702 | 801 | 803 | 901 | 902 | 903 | 904 | 906 |
|-------|------------------|------|--------|-------------|------------|-----------|-----|-------|-------|-----|-----|-----|-----|-----|-----|-----|-----|--------|-------|-------|-------|------|-----|-----|-----|-----|-----|-----|-----|-----|-----|------|-----|-----|-----|-----|
| URBAN | Research Park Dr | Lacy | Cheryl | 1310 | 36 | 5549 | EA | CY | SY | EA | LF | LF | SF | SF | LF | SF | SF | SY | GAL | TON | TON | LF | SY | EA | EA | EA | EA | EA | EA | EA | EA | EA | EA | EA | EA | EA |
| | | | | | | | 8 | 277.5 | 133.3 | 1.0 | | 600 | 260 | 130 | 20 | | | 5549.2 | 333.0 | 558.4 | 717.9 | 2692 | | 7 | | | 1 | 4 | 3 | 3 | | 3000 | 55 | 148 | 1 | 220 |



2026 STREET RESURFACING
RESEARCH PARK DR DETAILS

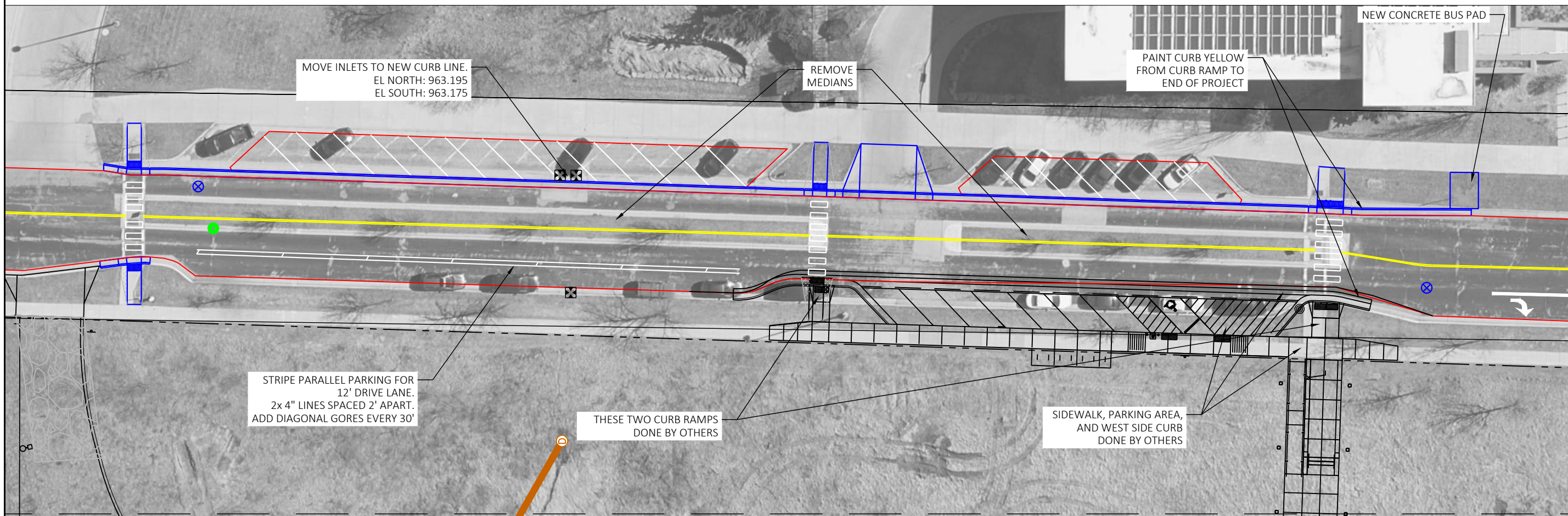
DRAWN BY: SRH
DATE: 12/15/2025
REVISED:



SHEET NO.:
12

- LEGEND**
- ⊗ ADJUST WATER VALVE
 - ⊗ ADJUST WATER VALVE MANHOLE
 - REPLACE ADJUSTING RINGS - SANITARY
 - REPLACE ADJUSTING RINGS - STORM
 - ⊗ REPLACE ADJUSTING RINGS - INLET & INLET PROTECTION
 - ADJUST STORM INLET
 - INLET PROTECTION
 - 30" C&G REMOVE AND REPLACE

- NOTES:**
1. CLEAN, UNDAMAGED SAWCUT REQ'D WHEN MATCHING INTO EXISTING PAVEMENT (INCIDENTAL TO CONTRACT). ENGINEER MUST APPROVE SAWCUT LOCATION IN FIELD PRIOR TO ANY CUTTING.
 2. WORK SHALL START WITHIN 2 WEEKS OF NOTICE. NOTICE TO START WORK ON RESEARCH PARK DR IS ANTICIPATED TO BE SENT BETWEEN MAY 1 AND JULY 1. RESEARCH PARK DR MAY BE CLOSED FOR 3 WEEKS TO ACCOMMODATE THIS WORK. CONTRACTOR SHALL COORDINATE ALL WORK WITH J.P. CULLEN (POLICE STATION CONTRACTOR).
 3. CURB AND GUTTER REPLACEMENT AMOUNTS ARE AN ESTIMATE. PLANS WITH SURVEYED AND MARKED AMOUNTS WILL BE PROVIDED PRIOR TO CONSTRUCTION.



MOVE INLETS TO NEW CURB LINE.
EL NORTH: 963.195
EL SOUTH: 963.175

REMOVE
MEDIANS

PAINT CURB YELLOW
FROM CURB RAMP TO
END OF PROJECT

NEW CONCRETE BUS PAD

STRIPE PARALLEL PARKING FOR
12' DRIVE LANE.
2x 4" LINES SPACED 2' APART.
ADD DIAGONAL GORES EVERY 30'

THESE TWO CURB RAMPS
DONE BY OTHERS

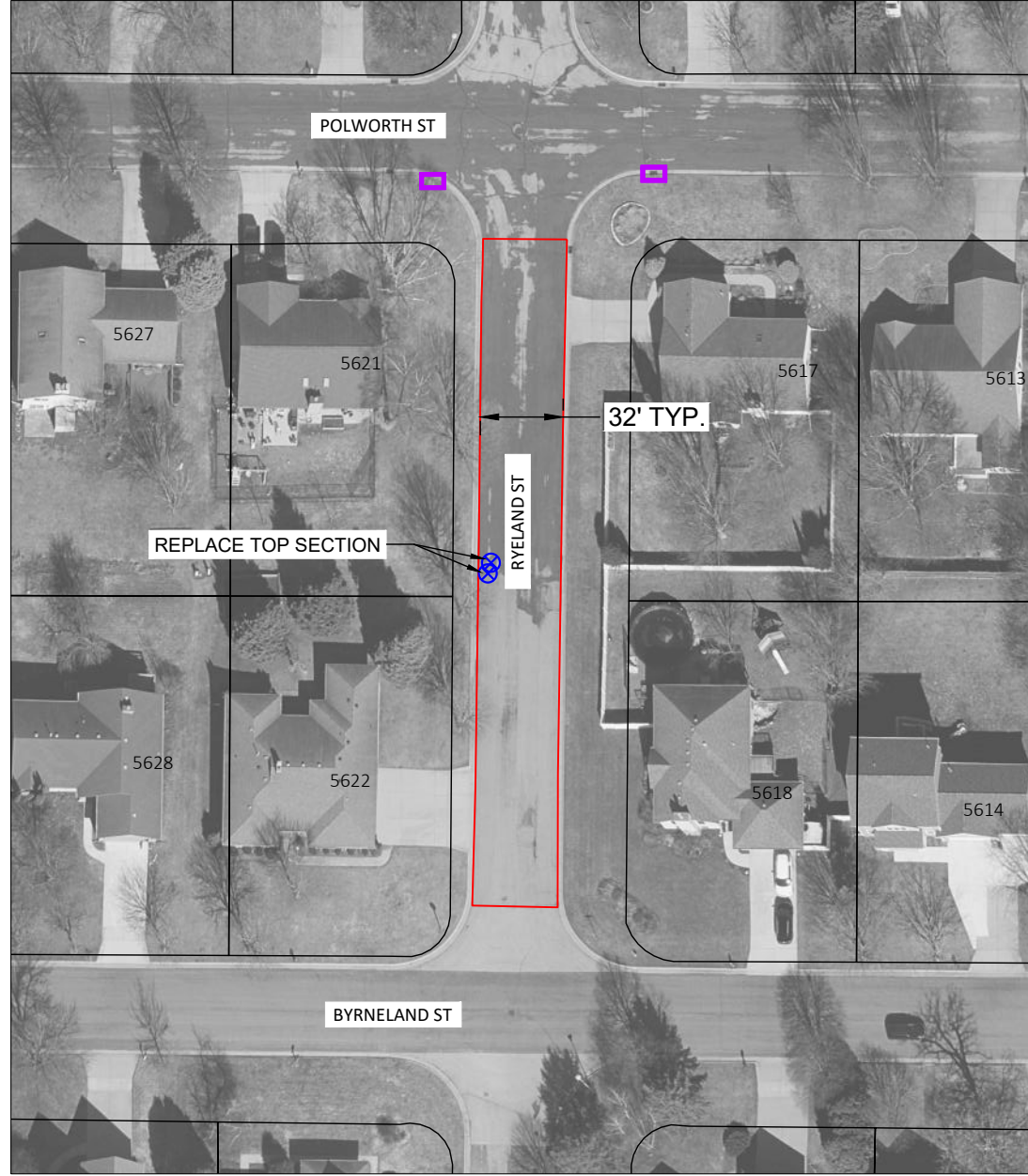
SIDEWALK, PARKING AREA,
AND WEST SIDE CURB
DONE BY OTHERS

LEGEND

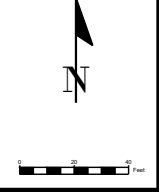
- ⊗ ADJUST WATER VALVE
- ⊗ ADJUST WATER VALVE MANHOLE
- ⊗ REPLACE ADJUSTING RINGS - SANITARY
- ⊗ REPLACE ADJUSTING RINGS - STORM
- ⊗ REPLACE ADJUSTING RINGS - INLET & INLET PROTECTION
- ⊗ ADJUST STORM INLET
- ⊗ INLET PROTECTION
- 30" C&G REMOVE AND REPLACE

NOTES:

1. CLEAN, UNDAMAGED SAWCUT REQ'D WHEN MATCHING INTO EXISTING PAVEMENT (INCIDENTAL TO CONTRACT). ENGINEER MUST APPROVE SAWCUT LOCATION IN FIELD PRIOR TO ANY CUTTING.
2. CURB AND GUTTER REPLACEMENT AMOUNTS ARE AN ESTIMATE. PLANS WITH SURVEYED AND MARKED AMOUNTS WILL BE PROVIDED PRIOR TO CONSTRUCTION.



| Class | Street | From | To | Length (LF) | Width (FT) | Area (SY) | EA | CY | SY | EA | LF | LF | SF | SF | LF | SF | SF | SY | GAL | TON | TON | LF | SY | EA | EA | EA | EA | EA | EA | EA | EA | EA | EA | EA | EA | EA | |
|-------|------------|-------------|-----------|-------------|------------|-----------|----|------|------|----|----|----|----|----|----|----|----|-------|------|------|-------|-----|----|----|----|----|----|----|----|----|----|----|----|----|----|----|--|
| URBAN | Ryeland St | Polworth St | Byrneland | 263 | 32 | 935 | 3 | 46.8 | 17.5 | | 79 | | | | | | | 935.1 | 56.1 | 94.1 | 121.0 | 590 | 1 | | | | 2 | 2 | | | | | | | | | |

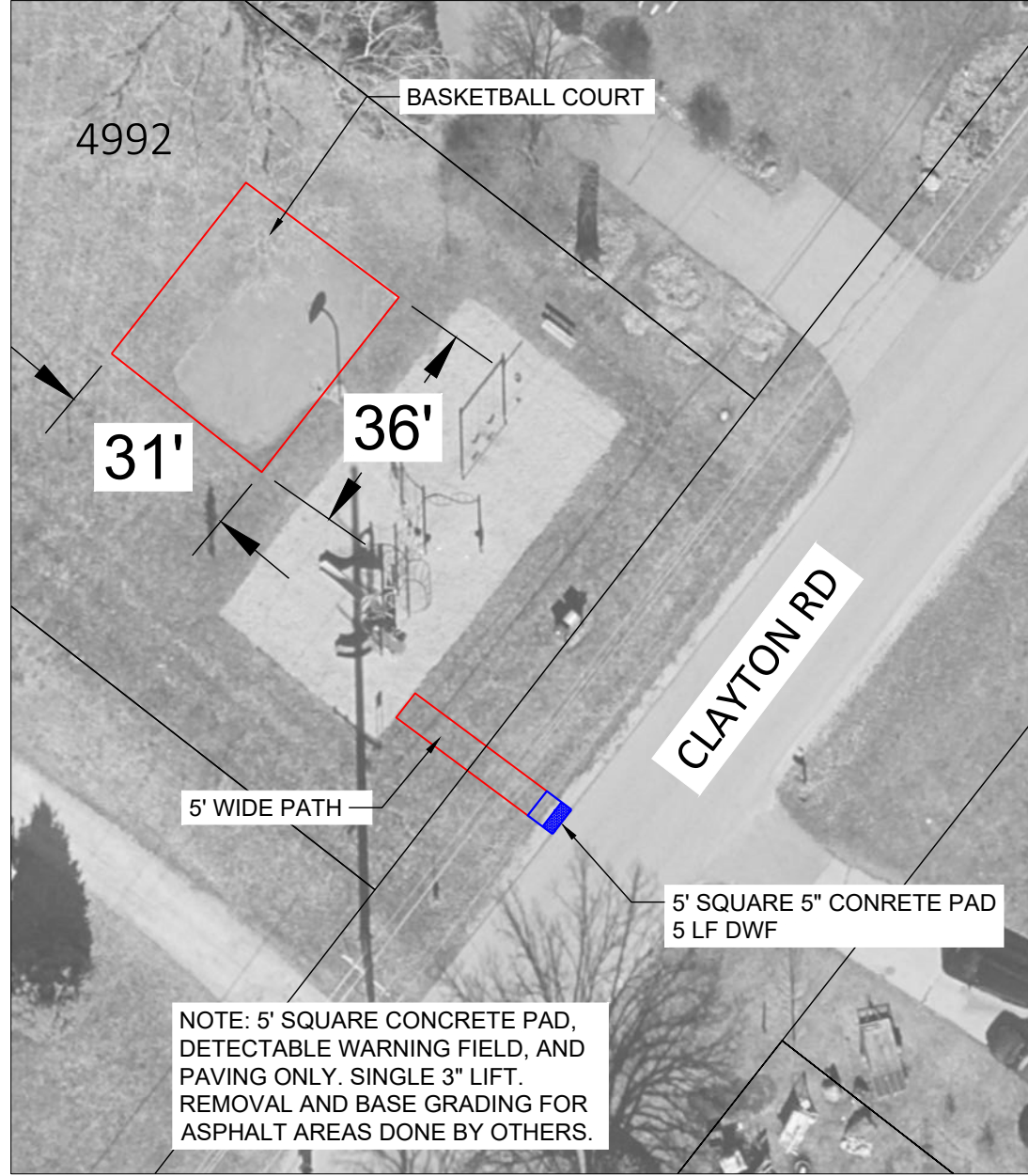


LEGEND

- ⊗ ADJUST WATER VALVE
- ⊗ ADJUST WATER VALVE MANHOLE
- ⊗ REPLACE ADJUSTING RINGS - SANITARY
- ⊗ REPLACE ADJUSTING RINGS - STORM
- ⊗ REPLACE ADJUSTING RINGS - INLET & INLET PROTECTION
- ⊗ ADJUST STORM INLET
- ⊗ INLET PROTECTION
- 30" C&G REMOVE AND REPLACE

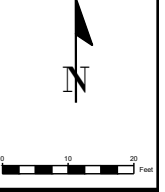
NOTES:

1. CLEAN, UNDAMAGED SAWCUT REQ'D WHEN MATCHING INTO EXISTING PAVEMENT (INCIDENTAL TO CONTRACT). ENGINEER MUST APPROVE SAWCUT LOCATION IN FIELD PRIOR TO ANY CUTTING.



NOTE: 5' SQUARE CONCRETE PAD, DETECTABLE WARNING FIELD, AND PAVING ONLY. SINGLE 3" LIFT. REMOVAL AND BASE GRADING FOR ASPHALT AREAS DONE BY OTHERS.

| Class | Street | From | To | Length (LF) | Width (FT) | Area (SY) | Framed Inlet Protection | Excavation Below Subgrade | Seeding and Restoration | Remove Median | Horizontal Curb Saw Cut | Remove and Replace Curb and Gutter | Remove and Replace Concrete - 7" | Remove and Replace Concrete - 5" | 2' Detectable Warning Field Natural Patina | New Concrete - 7" | New Concrete - 5" | Pulverize Pavement | Tack Coat | HMA Pavement - Upper Layer | HMA Pavement - Lower Layer | Pavement Joint Adhesive | Utility Patching | Adjust Storm Inlet | Remove and Replace Culvert | Remove Culvert | Move Storm Inlet | Adjust Water Valve Box | Remove and Replace Water Valve Box | Adjust Sanitary Manhole Cover | Replace Sanitary Manhole Frame Casting | 4" Epoxy Paint | 6" Epoxy Paint | 24" Epoxy Paint | Single Arrow Epoxy Paint | Curb Marking Epoxy Paint | | |
|-------|--------------|------|----|-------------|------------|-----------|-------------------------|---------------------------|-------------------------|---------------|-------------------------|------------------------------------|----------------------------------|----------------------------------|--|-------------------|-------------------|--------------------|-----------|----------------------------|----------------------------|-------------------------|------------------|--------------------|----------------------------|----------------|------------------|------------------------|------------------------------------|-------------------------------|--|----------------|----------------|-----------------|--------------------------|--------------------------|----|--|
| EA | CY | SY | EA | LF | LF | SF | SF | LF | SF | SF | SY | GAL | TON | TON | LF | SY | EA | EA | EA | EA | EA | EA | EA | EA | EA | EA | EA | EA | EA | EA | EA | EA | EA | EA | EA | EA | EA | |
| BBALL | Clayton Park | - | - | 31 | 36 | 138 | | | 6.9 | | 4 | | 25 | | 5 | | 25 | | | 23.7 | | | 10 | | | | | | | | | | | | | | | |



LEGEND

- ⊗ ADJUST WATER VALVE
- ⊗ ADJUST WATER VALVE MANHOLE
- ⊗ REPLACE ADJUSTING RINGS - SANITARY
- ⊗ REPLACE ADJUSTING RINGS - STORM
- ⊗ REPLACE ADJUSTING RINGS - INLET & INLET PROTECTION
- ⊗ ADJUST STORM INLET
- ⊗ INLET PROTECTION
- 30" C&G REMOVE AND REPLACE

NOTES:

1. CLEAN, UNDAMAGED SAWCUT REQ'D WHEN MATCHING INTO EXISTING PAVEMENT (INCIDENTAL TO CONTRACT). ENGINEER MUST APPROVE SAWCUT LOCATION IN FIELD PRIOR TO ANY CUTTING.
2. DRIVEWAY SAWCUTS WILL BE MARKED IN FIELD BY ENGINEER. ALL DRIVEWAYS TO BE REPLACED WITH EXISTING MATERIAL (ASPHALT OR CONCRETE) AND WILL BE PAID BY THE LINE ITEM OF THE SAME DESCRIPTION.

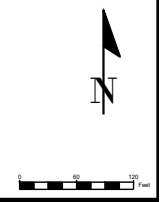


| Class | Street | From | To | Length (LF) | Width (FT) | Area (SY) | Framed Inlet Protection | Excavation Below Subgrade | Seeding and Restoration | Remove Median | Horizontal Curb Saw Cut | Remove and Replace Curb and Gutter | Remove and Replace Concrete - 7" | Remove and Replace Concrete - 5" | 2' Detectable Warning Field Natural Patina | New Concrete - 7" | New Concrete - 5" | Pulverize Pavement | Tack Coat | HMA Pavement - Upper Layer | HMA Pavement - Lower Layer | Pavement Joint Adhesive | Utility Patching | Adjust Storm Inlet | Remove and Replace Culvert | Remove Culvert | Move Storm Inlet | Adjust Water Valve Box | Remove and Replace Water Valve Box | Adjust Sanitary Manhole Cover | Replace Sanitary Manhole Frame Casting | 4" Epoxy Paint | 6" Epoxy Paint | 24" Epoxy Paint | Single Arrow Epoxy Paint | Curb Marking Epoxy Paint | | | | |
|-------|-------------|------------------|-------------|-------------|------------|-----------|-------------------------|---------------------------|-------------------------|---------------|-------------------------|------------------------------------|----------------------------------|----------------------------------|--|-------------------|-------------------|--------------------|-----------|----------------------------|----------------------------|-------------------------|------------------|--------------------|----------------------------|----------------|------------------|------------------------|------------------------------------|-------------------------------|--|----------------|----------------|-----------------|--------------------------|--------------------------|----|----|----|----|
| | | | | | | | EA | CY | SY | EA | LF | LF | SF | SF | LF | SF | SF | SY | GAL | TON | TON | LF | SY | EA | EA | EA | EA | EA | EA | EA | EA | EA | EA | EA | EA | EA | EA | EA | EA | EA |
| RURAL | Lisa Ln | Irish Ln | Shamrock Ln | 1050 | 24 | 2800 | | 140.0 | 233.3 | | | | | | | | | 2800.0 | 168.0 | 281.8 | 362.3 | | | 1 | | | | | | | | | | | | | | | | |
| RURAL | Colleen Cir | Lisa Ln | Entire | 450 | 20 | 1000 | | 50.0 | 100.0 | | | | | | | | | 1000.0 | 60.0 | 100.6 | 129.4 | | | | | | | | | | | | | | | | | | | |
| RURAL | Darrell Dr | Shamrock Ln | Entire | 266 | 20 | 591 | | 29.6 | 59.1 | | | | | | | | | 591.1 | 35.5 | 59.5 | 76.5 | | | | | | | | | | | | | | | | | | | |
| RURAL | Shamrock Ln | Fish Hatchery Rd | Lisa Ln | 675 | 20 | 1500 | | 75.0 | 150.0 | | | | | | | | | 1500.0 | 90.0 | 150.9 | 194.1 | | | 1 | | | | | | | | | | | | | | | | |
| RURAL | Beth Ln | Kathleen St | Entire | 430 | 20 | 956 | | 47.8 | 95.6 | | | | | | | | | 955.6 | 57.3 | 96.2 | 123.6 | | | | | | | | | | | | | | | | | | | |
| RURAL | Kathleen St | Irish Ln | Entire | 1350 | 24 | 3600 | | 180.0 | 300.0 | | | | | | | 345 | 3600.0 | 216.0 | 362.3 | 465.8 | 5 | | 1 | | | | | | | | | | | | | | | | | |
| RURAL | Maves Rd | Kathleen St | Entire | 630 | 20 | 1400 | | 70.0 | 140.0 | | | | | | | | | 1400.0 | 84.0 | 140.9 | 181.1 | | | | | | | | | | | | | | | | | | | |
| RURAL | Jan Dr | Lisa Ln | Kathleen St | 790 | 20 | 1756 | | 87.8 | 175.6 | | | | | | | | | 1755.6 | 105.3 | 176.7 | 227.1 | | | | | | | | | | | | | | | | | | | |



**2026 STREET RESURFACING
HILLSIDE HEIGHTS
NEIGHBORHOOD**

DRAWN BY: SRH
DATE: 12/15/2025
REVISED:



SHEET NO.:
15

