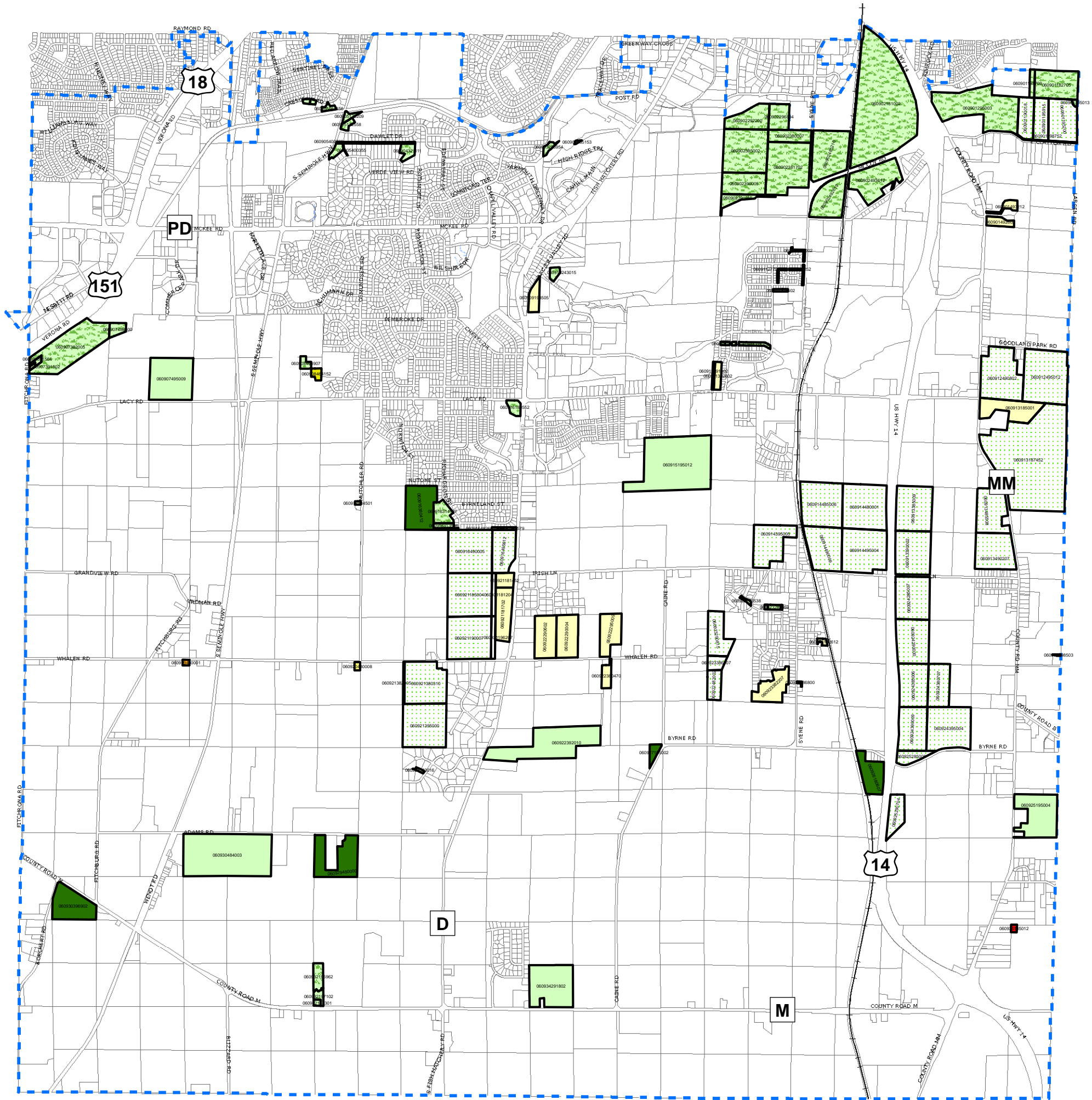


# Properties to be Rezoned



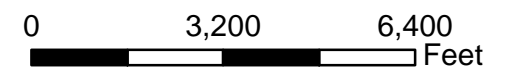
## Legend

### Rezones Confirmed

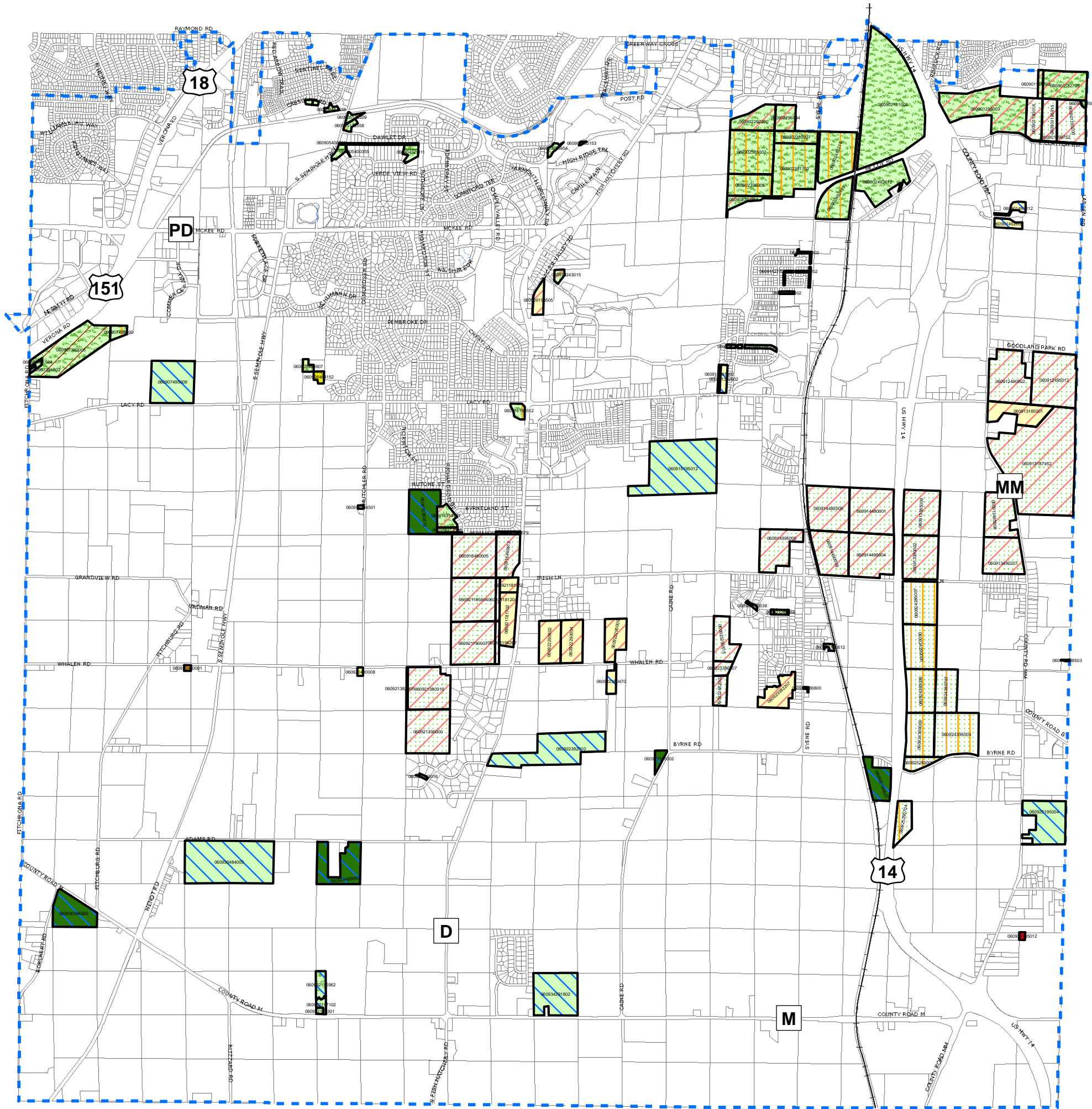
- A-S; Small Lot Agriculture
- A-T; Transitional Agriculture
- A-X; Exclusive Agriculture
- R-L; Low Density Res.
- R-LM; Low to Medium Density Res.
- R-M; Medium Density Res.
- R-R; Rural Residential
- B-H; Business Highway
- P-R; Park & Recreation



Source: Dane County LIO  
City of Fitchburg  
April 10, 2012



# Properties to be Rezoned



## Legend

### Rezones Confirmed

#### New Zoning District

- A-S; Small Lot Agriculture
- A-T; Transitional Agriculture
- A-X; Exclusive Agriculture
- R-L; Low Density Res.
- R-LM; Low to Medium Density Res.
- R-M; Medium Density Res.
- R-R; Rural Residential
- B-H; Business Highway
- P-R; Park & Recreation

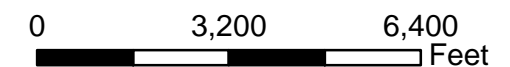
### Current Zoning District

#### District to be changed

- A-T; Transitional Agriculture
- A-X; Exclusive Agriculture
- P-R; Park Recreation
- R-L; Low Density Res.
- R-LM; Low to Medium Density Res.
- R-HA; Former R4
- R-R; Rural Residential
- R-D; Rural Development
- B-H; Business Highway



Source: Dane County LIO  
City of Fitchburg  
April 10, 2012



# Properties to be Rezoned

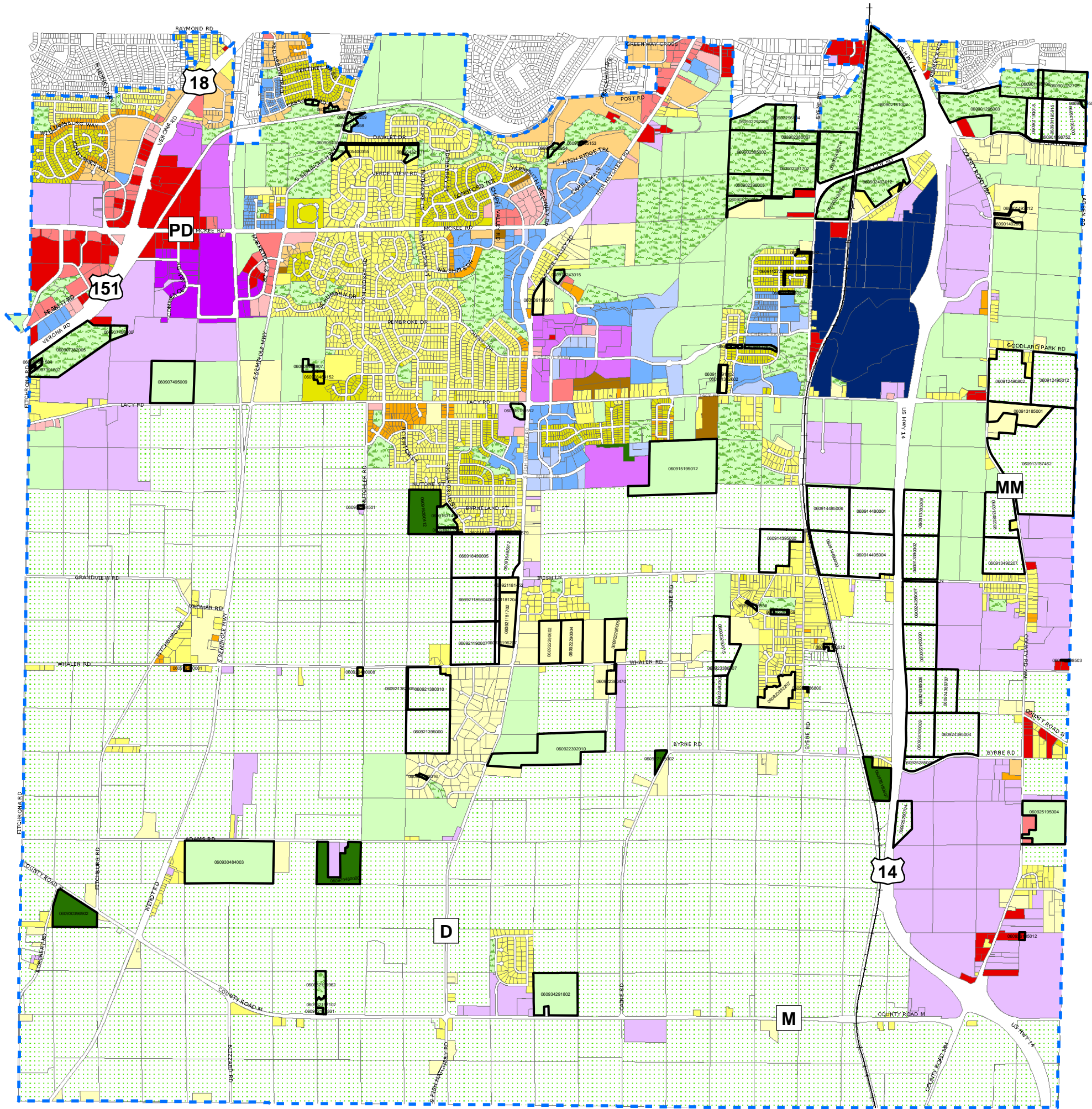
Entire City Zoning with Proposed Rezoning Districts

## Legend

 Proposed Rezone Properties

## Zoning Districts

-  A-S ; Small Lot Agriculture (Non-certified Ag Zoning)
-  A-T ; Transitional Agriculture (Non-certified Ag Zoning)
-  A-X ; Exclusive Agriculture (Certified Ag Zoning)
-  B-G ; General Business
-  B-H ; Highway Business
-  B-P ; Business Professional
-  I-G ; General Industrial
-  I-S ; Specialized Industrial
-  P-R ; Park and Recreation
-  PDD-GIP
-  PDD-SIP
-  R-D ; Rural Development
-  R-H ; High Density Residential
-  R-HA ; Former R-4
-  R-L ; Low Density Residential
-  R-LM ; Low to Medium Density Residential
-  R-M ; Medium Density Residential
-  R-R ; Rural Residential
-  SC-NC ; Smart Code



Source: Dane County LIO  
City of Fitchburg  
April 10, 2012

